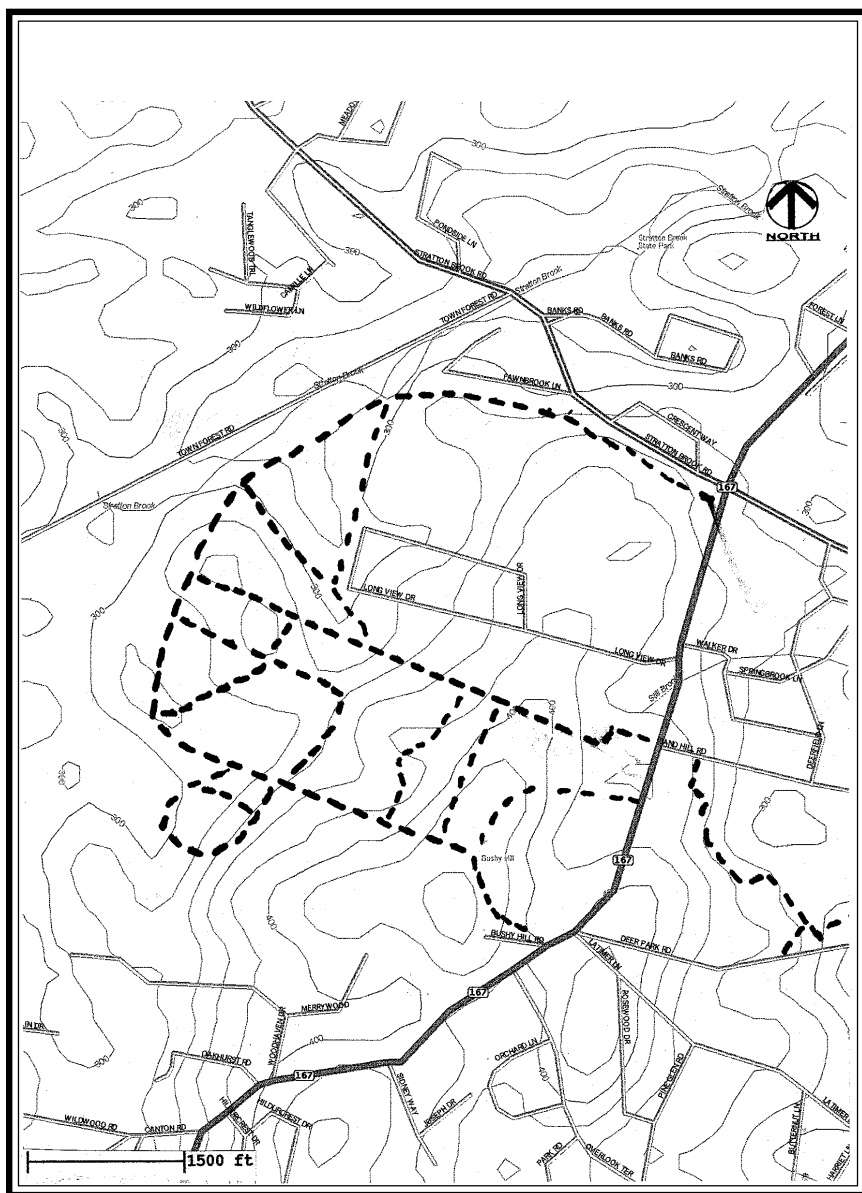


ETHEL WALKER SCHOOL TRAILS



ETHEL WALKER SCHOOL TRAILS

The Ethel Walker School owns several hundred acres east and west of Bushy Hill Road (Route 167). There are beautiful stands of white pine, hemlock, and oak, some open fields, and many valuable wetlands. The school maintains a number of trails for its horseback riding program and welcomes the public to hike and cross-country ski them. The trails are even and easy to walk. Cross-country skiing is especially spectacular with fresh snow clinging to the hemlock boughs.

East of Bushy Hill Road, behind the School's main buildings lie the athletic fields, community gardens, and a small parking lot. Just south of these fields there are several trails connecting Sand Hill Road and Deer Park Road. One of these trails traverses the edge of a small pond.

West of Bushy Hill is an extensive network of interconnected trails. Here visitors can customize the length of a hiking or skiing outing. These trails also access Town Forest Park. Although the trails are not well marked, it's hard to stay lost here for long.

Visitors can access the western trails from several places: through the trails in Town Forest Park at the end of Town Forest Road; from town land off Stratton Brook Road just east of Fawnbrook Lane; and via a dirt road off Woodhaven Road.

The School specifically asks that its land not be accessed from the Bushy Hill Road side as those areas are heavily used by school vehicles, students, and horses.

