

The Simsbury Scoop



December 2014 www.simsbury-ct.gov

What's all the Hoopla?

Can't sleep? Now you can download an audiobook, movie, some music or a television show from the Simsbury Public Library any time you want. Thousands of files are now available for mobile and online access 24/7 through a new service with hoopla digital to all Simsbury library card holders.

Through the library's website patrons can access hoopla digital via their personal computer or download the free hoopla digital mobile app on their Android or iOS device to begin enjoying thousands of titles.

Patrons are able to borrow up

to three hoopla selections per month with their library cards. Movies and television shows are



available for three days after check out, music for seven days and audiobooks for 21 days.

"The library is committed to improving the quality of our collection and providing it in the

format that is most convenient to our patrons," said Susan Ray, head of adult services. "With

hoopla digital, we are able to expand our collection with thousands of movies, songs and audiobooks that are accessible via our website or hoopla app – free of charge. The service is also

digital and immediate, so there is no waiting period for popular titles and no need to worry about late fees."

To access the system on a mobile device, patrons need to visit hoopladigital.com or download the free hoopla digital app from the App Store on an Android or IOS device. Simply select 'Sign Up' to get started. There is no need to download an app or extension for your internet browser.

For more information on this and other exciting services at the Simsbury Public Library, please visit the library website at simsburylibrary.info.

Help others this holiday season

Here is a nice way to spread some holiday cheer. The Simsbury Social Service Department is collecting grocery gift cards for the holidays.

Their goal is to collect 100 \$20 food cards to distribute to Simsbury families in need.

The cards can be for any food

store, and you can donate the cards or the money and the department will buy them.

If you want to drop off a card or money, you can drop by the department, located in Eno Memorial Hall, 754 Hopmeadow Street.

Or you can mail in the cards or money to the Town of

Simsbury Social Services Department, P.O. Box 495, Simsbury, CT 06070

If you have any questions, call 860-658-3283 or email Mickey Lecours-Beck, Director of Social Services at mlecouts-beck@simsbury-ct.gov.



Dates to remember, holiday closings:

- ◆ Simsbury Town Hall will be closed December 24 and 25.
- ◆ Simsbury Public Schools will be closed December 24 through January 2, 2015.
- ◆ The Simsbury Public Library will be closed on December 24 and 25.



Wide open spaces

Simsbury is fulfilling its long-range open space program to preserve more than 425 acres of the Ethel Walker School property. The initial planning for protecting this environmentally sensitive land began in 2001, while Anita Mielert was First Selectman.

During First Selectman Thomas Vincent's time in office, the town worked cooperatively with the Ethel Walker School, the state Department of Energy and Environmental Protection, Keep the Woods, Trust for Public Land, and town boards and commissions to develop a long-range acquisition agreement that provided for grant applications and acquisitions over a 14-year period.

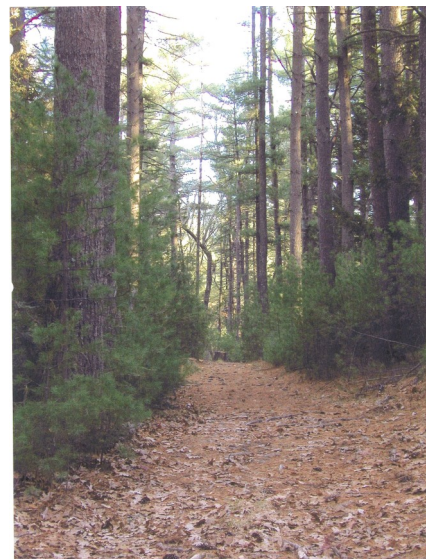
In June 2007, the first parcels were acquired. The 286 acres of land nearest the Stratton Brook Aquifer were purchased, and the

development rights for 49 acres of land along Bushy Hill Road were acquired.

While Mary Glassman served as First Selectman, three additional grants were received to acquire an additional 91 acres.

The Ethel Walker properties now serve as the cornerstone of over 1,400 contiguous acres of open space, recreation and agricultural land, with connectivity to an additional 5,200 acres of open space. These combined properties are among the largest open space areas in Connecticut.

Protection of these land assets were achieved through the efforts of the state, town, Simsbury Land Trust, U.S. Dept. of Interior Highlands Act, Simsbury Coon Club, and McLean Game Refuge.



To read the full press release, [click here](#).

Time to think about snow and ice

The Simsbury Police Department wants to remind residents, businesses owners/employees and snow plowing/removal personnel to keep streets and sidewalks clear of snow and ice. It is imperative to provide emergency access for police, fire, ambulance and maintenance vehicles to all areas of our community.

Parking on the Street

Vehicles should not be parked on the street if they impede snow removal operations, during and after a storm. The owner/operator of a vehicle that obstructs snow removal operations may be subject to a fine and the vehicle may be towed.

Plowing or Blowing Snow in/Across Street

Snow plowing and blowing into the street or across a street is prohibited. As a homeowner/business owner it is your responsibility to tell your contractors not to clear your driveway by pushing the snow across and into the streets.

Sidewalks

Sidewalks are used for emergency personnel, children walking to school, commerce (e.g. USPS, Fed-Ex, UPS) and general use. Any and all snow, sleet and ice must be removed from sidewalks by property owners within 24 hours.

For questions, call the police department at 860-658-3100.



The comfort of puppies

Simsbury High School students will have new weapon to fight the anxiety of finals week: the cuteness of puppies.

The student council forwarded the idea to the school administration, knowing that all that softness and warmth of floppy puppies has been proven to help with stress. The idea was

approved and so the week prior to finals will be puppy filled. And no, the pups won't be running the halls. They will be in one place and during free periods students will be welcome to play with the puppies and relieve some stress. Right now, the puppy event is for just this one time, but the hope is to bring puppies in every year.



Tea with Abigail Adams
Sunday, December 14
2 to 3:30 p.m.
Simsbury Public Library
Program Room



As Abigail Adams, Carol Bielefeld will present a lively portrait of one of the most fascinating and remarkable women in the nation's history.

Abigail oversaw the family farm, raised the children, ran a business and invested

money as her husband, John, the second president of the United States was serving the country. Her famous 'Remember the Ladies' directive to her husband highlights her early push for equal rights under the law. simsburylibrary.info