
DEVELOPMENT UPDATE

ECONOMIC DEVELOPMENT COMMISSION

JUNE 22, 2022

GEORGE K. MCGREGOR, AICP



BY THE NUMBERS

Fiscal Year	Total Planning Department Permits/Fees
FY 17-18	\$1,220,385
FY 18-19	\$1,278,958
FY 19-20	\$753,727
FY 20-21	\$1,339,359
FY 21-22 (through April)	\$643,817

RIDGE AT TALCOTT MOUNTAIN



- 269 Units completed (of 299)
- 31 remaining
- Commercial shell building 1 complete
- 8,800 sf.ft. Commercial shell building 2 under construction

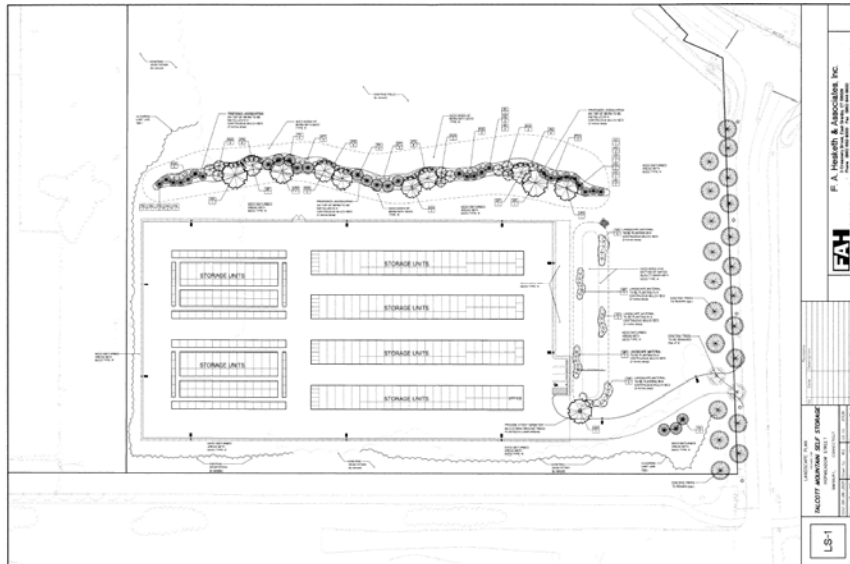


IRON HORSE INN



- 969 Hopmeadow St.
- 25 Apartment Units

TALCOTT MOUNTAIN SELF-STORAGE- 34A HOPMEADOW



55,000 sq.ft
+-300 storage units



**MCLEAN—75 GREAT POND RD
(50 SARAH LANE)**



54 Residential Units on
The McLean Campus



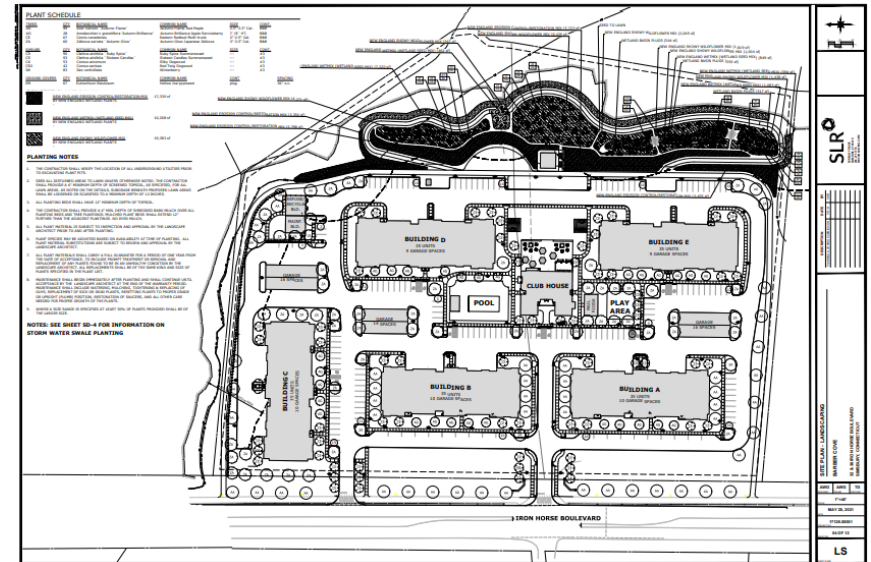
UConn Health—Andy's Center Shops 828 Hopmeadow



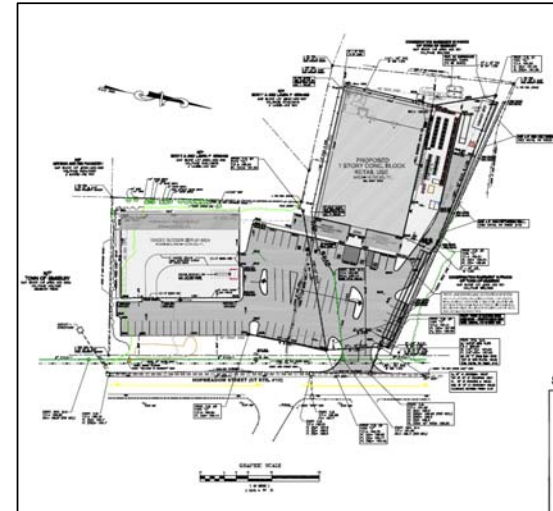
- UConn Health
- Medical Offices
- 12,000 sq.ft.

BARBER COVE 32-36 IRON HORSE BLVD.

- 175 multi-family residential units



TRACTOR SUPPLY- 1603 HOPMEADOW ST.

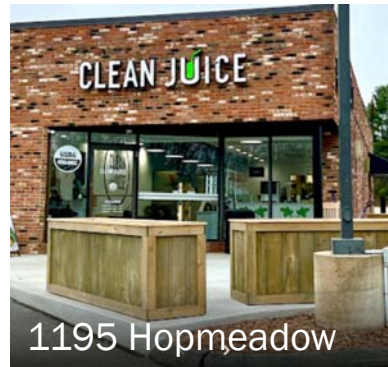


- 19,758 sq.ft. retail main building
- 13,000 sq.ft outdoor display

SELECT SMALL BUSINESS STARTS



Groomingdale's Simsmore Sq.



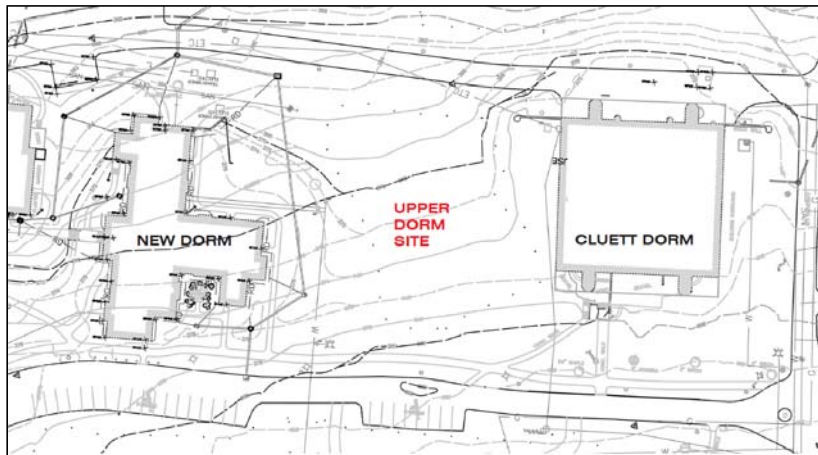
A Spoonful of Britain-Railroad St.



100 Grist Mill Open Soon!

FUTURE PROJECTS-THE ETHEL WALKER SCHOOL

- +-35 dormitory units
- 25,000 sq.ft.



LAND USE COMMISSION ACTIVITY

- Planning Commission-POCD Updates
- Zoning Commission-Review
- Open Space
- Accessory Dwelling Units
- Affordable Housing
- Cannabis Establishments
- Fiscal Impacts
- Sign Ordinance Review
- Language Revisions

TOWN OF SIMSBURY OUTREACH

- EBAD
- Dyno Nobel
- Mitchell Auto Group
- Fitzgerald's
- BWM Skating Center
- Curaleaf
- West Street Wines
- Phase Zero
- DE Jacobs