



Town of Simsbury

933 HOPMEADOW STREET

SIMSBURY, CONNECTICUT 06070

Engineering Department

DATE: January 22, 2024

RE: BID NO. 24-01
Rehabilitation of Bridge No. 03984 (Flower Bridge)
Simsbury, Connecticut

This **Addendum No. 2** includes clarifications, revisions, and additions to the Invitation for Bid. Modifications are hereby made to the Invitation for Bid issued January 4, 2024, for the above-referenced project.

Clarifications and General Information

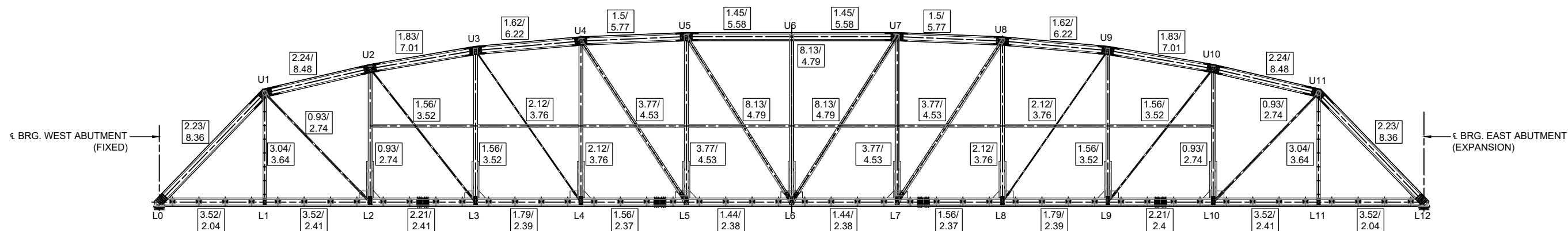
- A. Any suggested value engineering to the bid solicitation may be submitted as a separate package in addition to the bid package for the Town's consideration. Provide sufficient information to allow the town to fully vet any proposal. Submit any value engineering in the same envelope as the bid package, as advertised.

Responses to Questions:

- Q1: Reading the spec book there is a note under item 0503023A Removal of Existing Timber Deck that states "Use of Heavy Equipment on the bridge will not be permitted". What is the loading capacity of the bridge in psi?
- R1: The existing loading capacity of the bridge is outlined in the attached SK-01.**
- Q2: Would the town consider changing the surface preparation requirement from an SSPC-SP10 to an SSPC-SP6? The change in surface preparation will still support a 3-coat paint system as specified in the contract documents but would also reduce the amount of time and materials translating to a reduction of costs to the Abrasive Blasting bid item.
- R2: The SSPC-SP10 requirements has been noted of importance to provide adequate galvanic protection. This may be considered as a change as outlined in section A of the Clarifications and General Information in this addendum.**
- Q3: Are there any provisions for utility protection or coordination with the utility company to protect or relocate the existing powerlines near the bridge.
- R3: The Contractor shall coordinate with any utility company.**

- Q4: During the pre-bid meeting it was brought to everyone's attention that the budget for this project was a concern for the town. A suggestion was made to curb costs by allowing the performing paint contractor, which is QP1 & QP2 Certified with an active QC Program over seen by an on-site Quality Control Supervisor, to perform all quality control inspections therefore a Quality Assurance inspector would not be needed. To ensure the workmanship, would the town consider a 1-year performance bond warranty and forgo a QA inspection firm?
- R4: **Inspection services will be provided and funded by the Town of Simsbury. A 1-year warrantee exists as outlined in section 9.1 of the Project Manual: *Neither the final Certificate nor payment nor any provision in the Contract Documents shall relieve the contractor of responsibility for faulty materials or workmanship and, unless otherwise specified, he shall remedy any defects due thereto and pay for any damage to other work resulting therefrom, which shall appear within a period of one year from the date of substantial completion.***

THIS ENDS ADDENDUM NO. 2.



KEY

X.XX / Y.YY
X.XX - 90 PSF UNIFORM PEDESTRIAN LIVE LOAD RATING FACTOR
Y.YY - H10 VEHICLE LIVE LOAD RATING FACTOR.

TO DETERMINE LOAD CAPACITY, MULTIPLY RATING FACTORS BY 90 PSF FOR UNIFORM PEDESTRIAN LIVE LOAD, OR 10 TONS FOR VEHICLE LIVE LOAD

LIVE LOAD RATING FACTORS - FLOORBEAM & DECK

| | UNIFORM LIVE LOAD | VEHICLE LIVE LOAD |
|------------------------|-------------------|-------------------|
| FLOOR BEAM WEST OF L2: | 2.54 | 0.81 |
| REMAINING FLOOR BEAMS: | 2.54 | 1.11 |
| TIMBER DECK: | 8.59 | 0.37 |

TRUSS ELEVATION

SCALE: NOT TO SCALE

LIVE LOAD RATING FACTORS EXISTING CONDITION REHABILITATION OF FLOWER BRIDGE OVER FARMINGTON RIVER, SIMSBURY CT

DRAWN BY: PF

JANUARY 22, 2024

DRAWING SK-01

