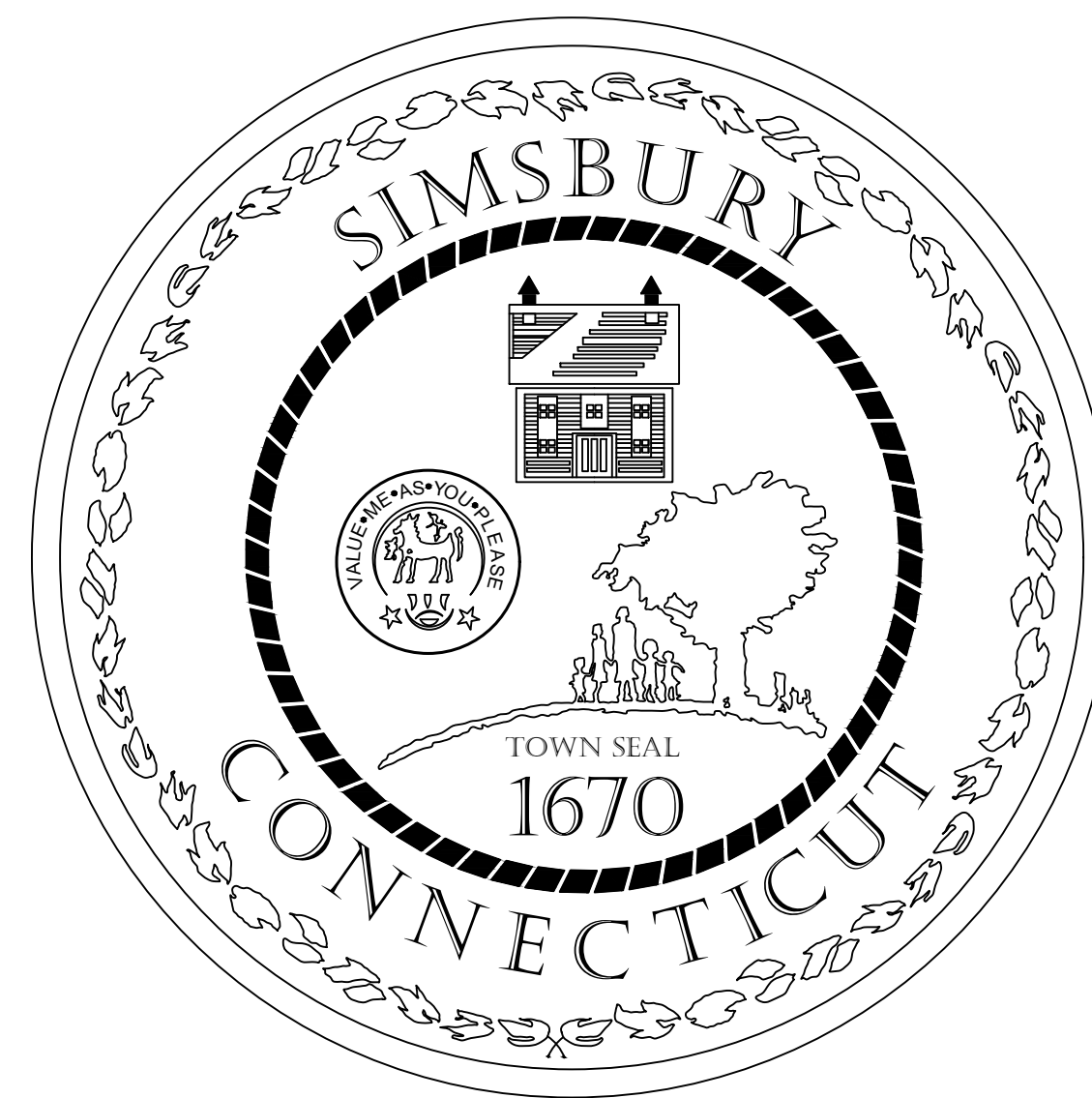


GATEWAY ENTRANCE BROWNSTONE COLUMNS

DEPARTMENT OF PUBLIC WORKS
66 TOWN FOREST ROAD
WEST SIMSBURY, CONNECTICUT



Prepared By:

SIMSBURY DEPARTMENT OF PUBLIC WORKS
66 TOWN FOREST ROAD
WEST SIMSBURY, CONNECTICUT 06092
860-658-3222

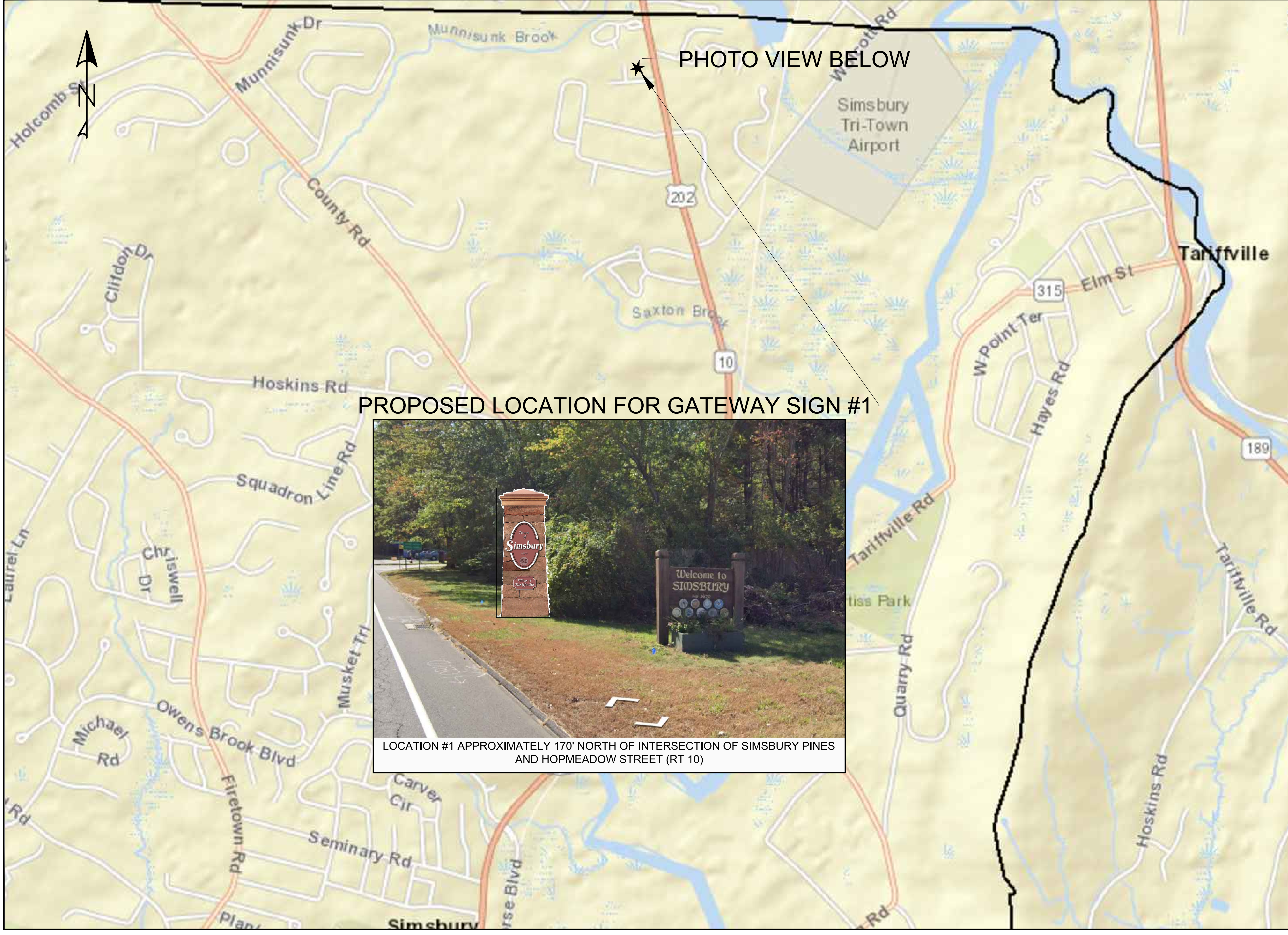
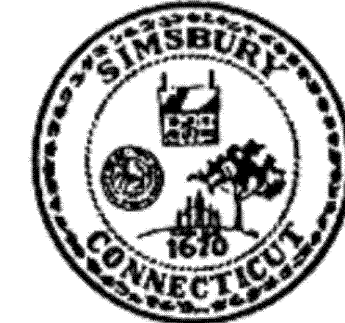


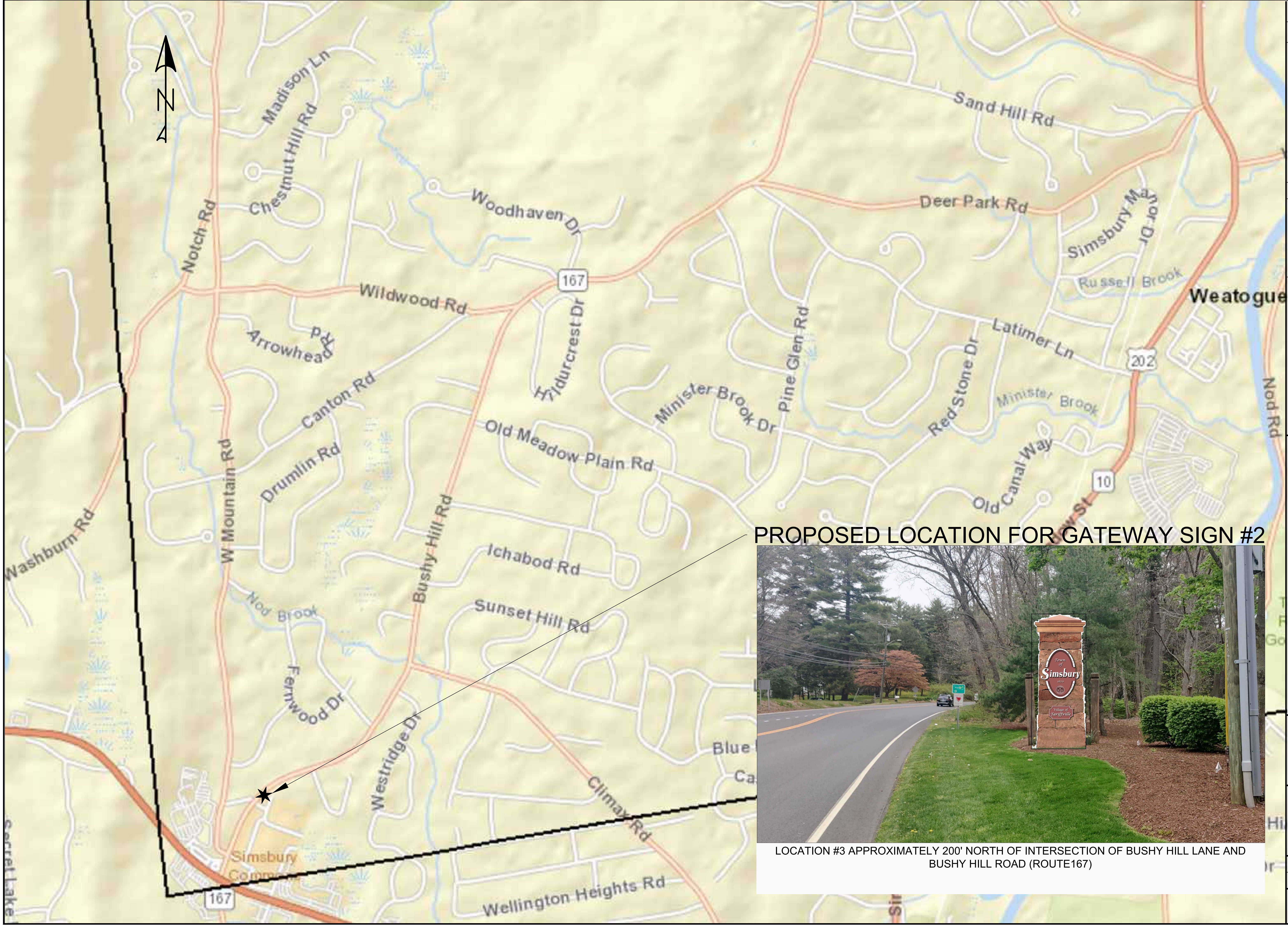
PHOTO VIEW BELOW

PROPOSED LOCATION FOR GATEWAY SIGN #1



LOCATION #1 APPROXIMATELY 170' NORTH OF INTERSECTION OF SIMSBURY PINES AND HOPMEADOW STREET (RT 10)

BY									
DATE									
REVISION									
NO.									
									
TOWN OF SIMSBURY DEPARTMENT OF PUBLIC WORKS 66 TOWN FOREST ROAD SIMSBURY CONNECTICUT									
SIMSBURY BROWNSTONE GATEWAY SIGNS									
DRAWN BY: RH									
CHECKED BY: YYY									
DATE: APRIL 18TH, 2022									
SCALE: NONE									
SHEET DWG-01									

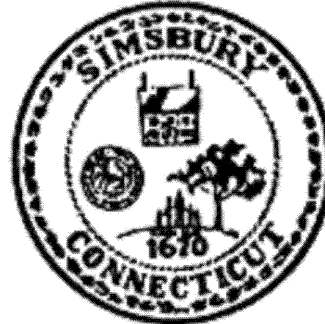


PROPOSED LOCATION FOR GATEWAY SIGN #2



LOCATION #3 APPROXIMATELY 200' NORTH OF INTERSECTION OF BUSHY HILL LANE AND BUSHY HILL ROAD (ROUTE 167)

BY	
DATE	
REVISION	
NO	



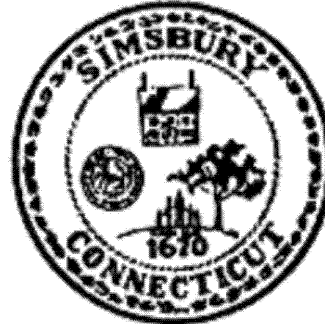
TOWN OF SIMSBURY
DEPARTMENT OF PUBLIC WORKS
66 TOWN FOREST ROAD
SIMSBURY CONNECTICUT

SIMSBURY BROWNSTONE
GATEWAY SIGNS

DRAWN BY: RH	CHECKED BY:
DATE: APRIL 18TH, 2022	SCALE: NONE

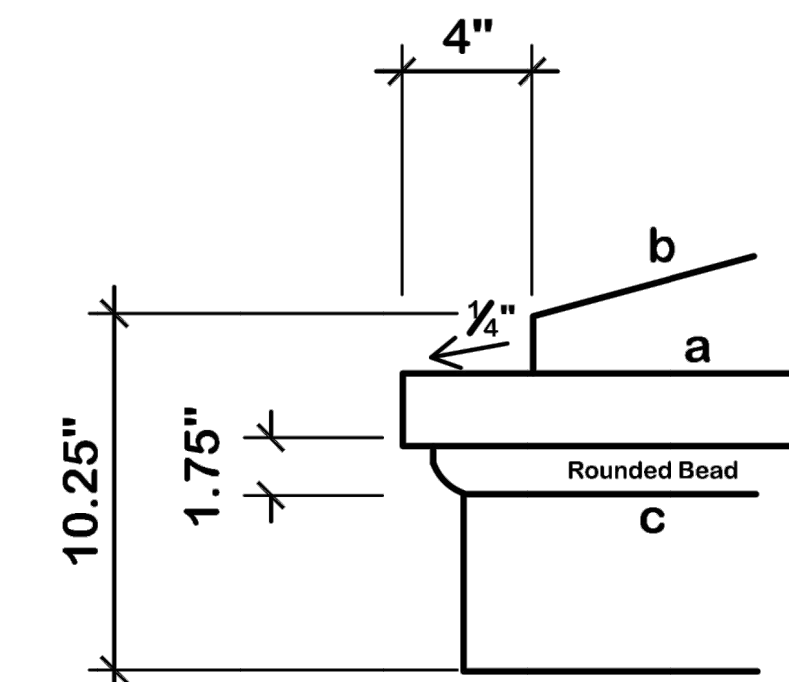
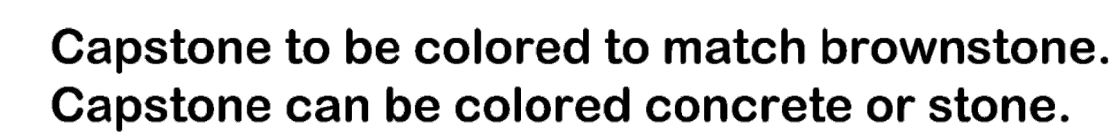
SHEET
DWG-02



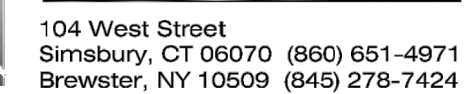
BY		
DATE		
REVISION		
NO.		
		
TOWN OF SIMSBURY DEPARTMENT OF PUBLIC WORKS 66 TOWN FOREST ROAD		SIMSBURY CONNECTICUT
SIMSBURY BROWNSTONE GATEWAY SIGNS		
DRAWN BY: RH		CHECKED BY:
DATE: APRIL 18TH, 2022		SCALE: NONE
SHEET DWG-04		



SCALE: 1" = 1'



SCALE: 1" = 1'



Simsbury, CT

Applicant: Town of Simsbury
933 Hopmeadow St.
Simsbury, CT 06070

FIGURE
L-6

CONCLUSION

11000000

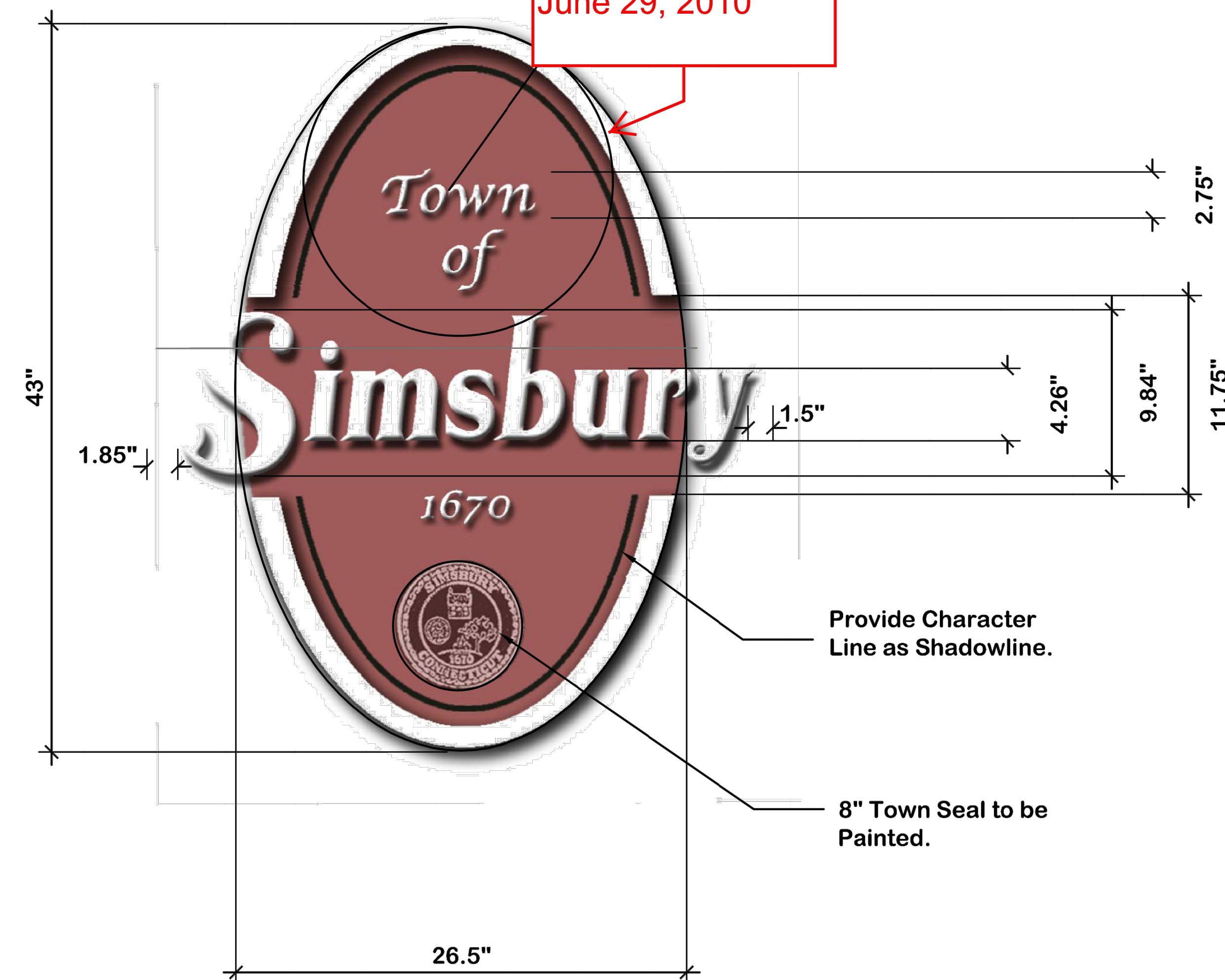
**SIMSBURY BROWNSTONE
GATEWAY SIGNS**

SHEET
DET-02

SCALE: 1" = 1'

SCALE: 1" = 1'

Note to Contractors:
Sign shall be painted metal, resin or wood. Sign must be warranted to be weather resistant and color-fast for 10 years minimum. Identify material to be used as part of bid documents.



Provide Character Line as Shadowline.

- 8" Town Seal to be Painted.

Sign Color Shown:
PMS Color # 93-5C

Contractor to confirm color matches stone. Indicate color chosen as part of bid document.

Font: " Town of " ~ Lucida Calligraphy
"Simsbury" ~ Adastra Black

Background color of sign panel to match stone color. Panel to be affixed to column. White oval and white letters to be raised at least 1" to provide shadows. Provide shop drawing, in color, as part of bid documents. Contractor to provide partial mock-up of sign, prior to approval.



104 West Street
Simsbury, CT 06070 (860) 651-4971
Brewster, NY 10509 (845) 278-7424

SIGN DETAIL

Simsbury Gateway Signs

**Simsbury,
Connecticut**

Project: 1912
Initials: CJK
Date: Nov 5, 2009
Scale: 1" = 1'

FIGURE
L-3

TOWN OF SIMSBURY
DEPARTMENT OF PUBLIC WORKS
66 TOWN FOREST ROAD

CONNECTICUT

SIMSBURY

**SIMSBURY BROWNSTONE
GATEWAY SIGNS**

DRAWN BY:	
DATE:	
APPROVED BY:	
DATE:	
TH, 2022	

CHECKED BY:
TY

SALE: ONE

SHEET
DET-03