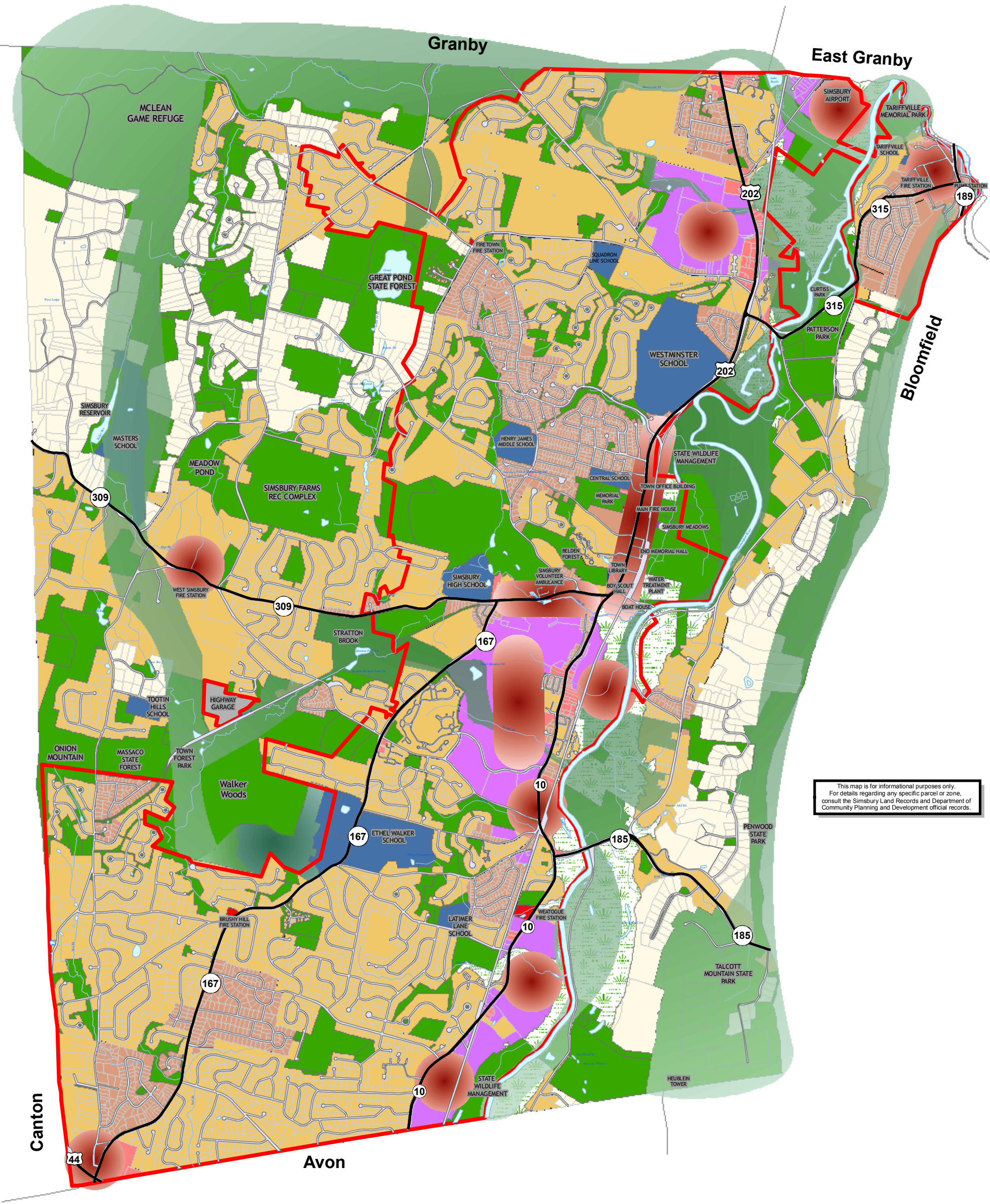




Town of Simsbury  
Future Land Use Plan



This map is for informational purposes only.  
For details regarding any specific parcel or zone,  
consult the Simsbury Land Records and Department of  
Community Planning and Development official records.

RESIDENTIAL DENSITIES

- Village Density
- Medium Density
- Low Density

- Sewer Service Area
- Open Space
- Open Space Corridors
- Flood Plain

- Business
- Industrial
- Special Areas

\*See Special Areas Reference Map



0 3,250 Feet

1 inch equals 3,250 feet

MAP EFFECTIVE 11/3/07

PREPARED BY THE  
TOWN OF SIMSBURY  
ENGINEER DEPARTMENT  
IN CONJUNCTION WITH:

NEW ENGLAND  
GEOSYSTEMS  
Geographic Information System Consultants  
1000 Boston Post Road, Suite 208  
Gulfport, CT 06467 • 203.404.7109 • www.ne-geo.com