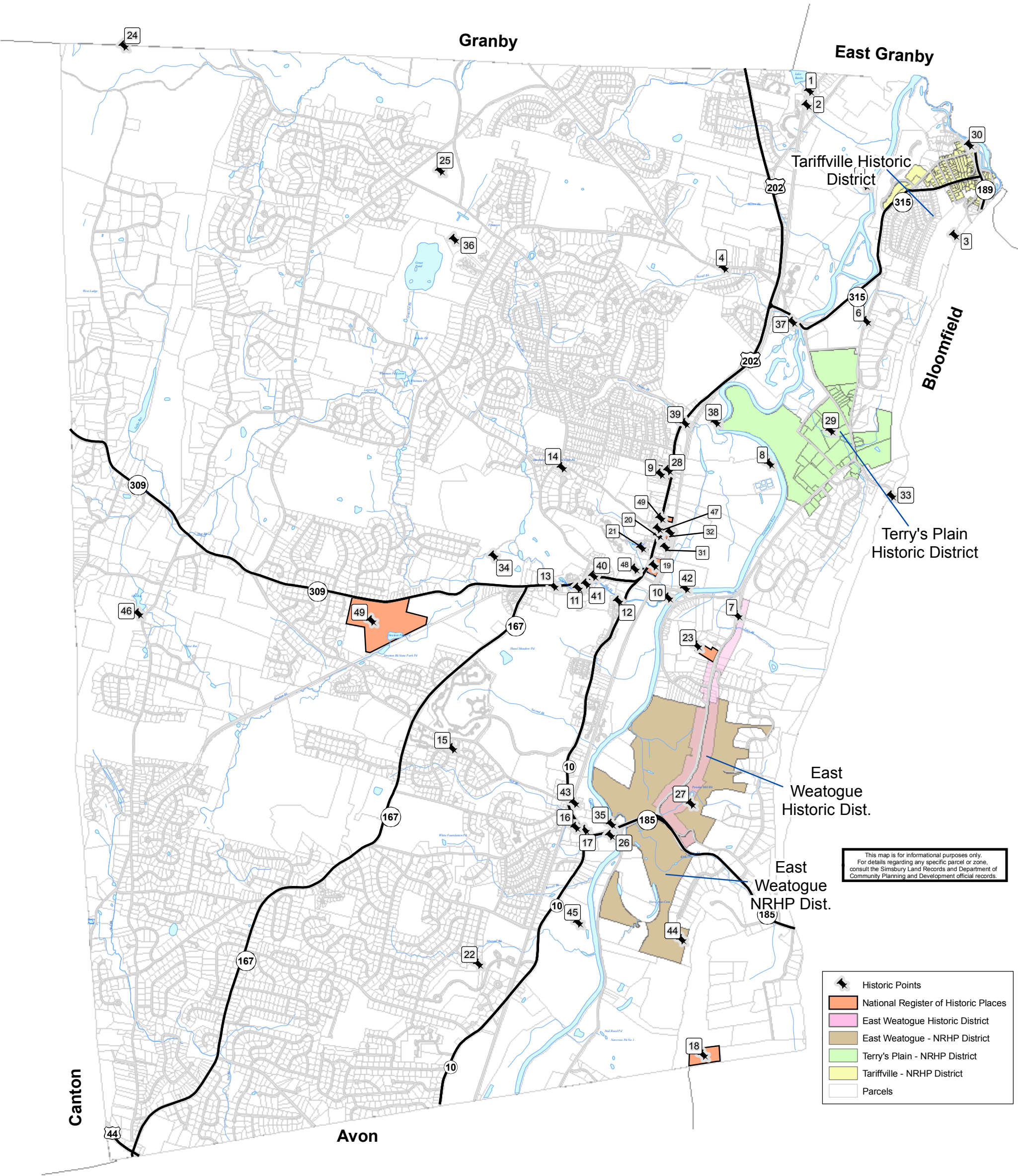




Town of Simsbury
Historic Points and Places



- | | | |
|--|---|--|
| Site | 13. Cooper Smelter and Steel Mill | 26. Manto Meadow |
| 1. Town Farm Cemetery | 14. Mindwell Adams Marker | 27. Old Fuse Factory |
| 2. Stone Railroad Arch at Town Farm | 15. Jared Bradley Marker | 28. Militia Training Ground |
| 3. Bartlett Tower | 16. Civil War Monument | 29. Militia Training Ground |
| 4. Cullman Brothers Inc. Dormitory | 17. White Memorial Fountain | 30. Carpet Company |
| 5. Governor's Bridge Railroad Crossing | 18. Heublein Tower - NRHP | 31. Central New England Station - NRHP |
| 6. Stone Quarry at Quarry Road | 19. Cannon Medical Center - NRHP | 32. New Haven and Northampton Station - NRHP |
| 7. Russell Marker | 20. Eno Memorial Hall - NRHP | 33. Wintonbury Road |
| 8. Pent Road Ferry | 21. Englewood (Simsbury 1820 Home) - NRHP | 34. Wire Mill |
| 9. Horace Belden/ Central Schools - NRHP | 22. Farmington Canal - NRHP | 35. 1734 Toll Bridge |
| 10. Old Drake Hill Bridge - NRHP | 23. John Humphrey House - NRHP | 36. Cullman Brothers Inc. Plantation |
| 11. Saw and Grist Mills at Hop Brook | 24. Piffershire Cider Mill | 37. Bissell's Landing |
| 12. Canal Arches Over Hop Brook | 25. First Fairground | 38. 1788 Bridge |

- | |
|---|
| 39. Probable Location of Potash Works |
| 40. Stone Quarry |
| 41. Calvin Barber Stone Quarry |
| 42. Ferry Site 1673 |
| 43. Probable Location of Indian Fort |
| 44. King Phillip's Cave |
| 45. American Sumatra Tobacco Plantation |
| 46. Stoddard Reservoir 1907 |
| 47. Simsbury Bank and Trust - NRHP |
| 48. Boy Scout Hall - NRHP |
| 49. Massaco Forest Pavilion - NRHP |
| 50. Phelps Tavern - NRHP |

0 3,250 Feet

1 inch equals 3,250 feet

Historical Point data source:
Archaeological Site Sensitivity Analysis
Of the Town of Simsbury
by Dr. Mark L. Banks and Dr. Lucianne S. Levin

Historical District data source:
Town of Simsbury Plan of Development 1994

PREPARED BY
THE TOWN OF SIMSBURY
ENGINEERING DEPARTMENT
IN CONJUNCTION WITH:
NEW ENGLAND
GEOSYSTEMS