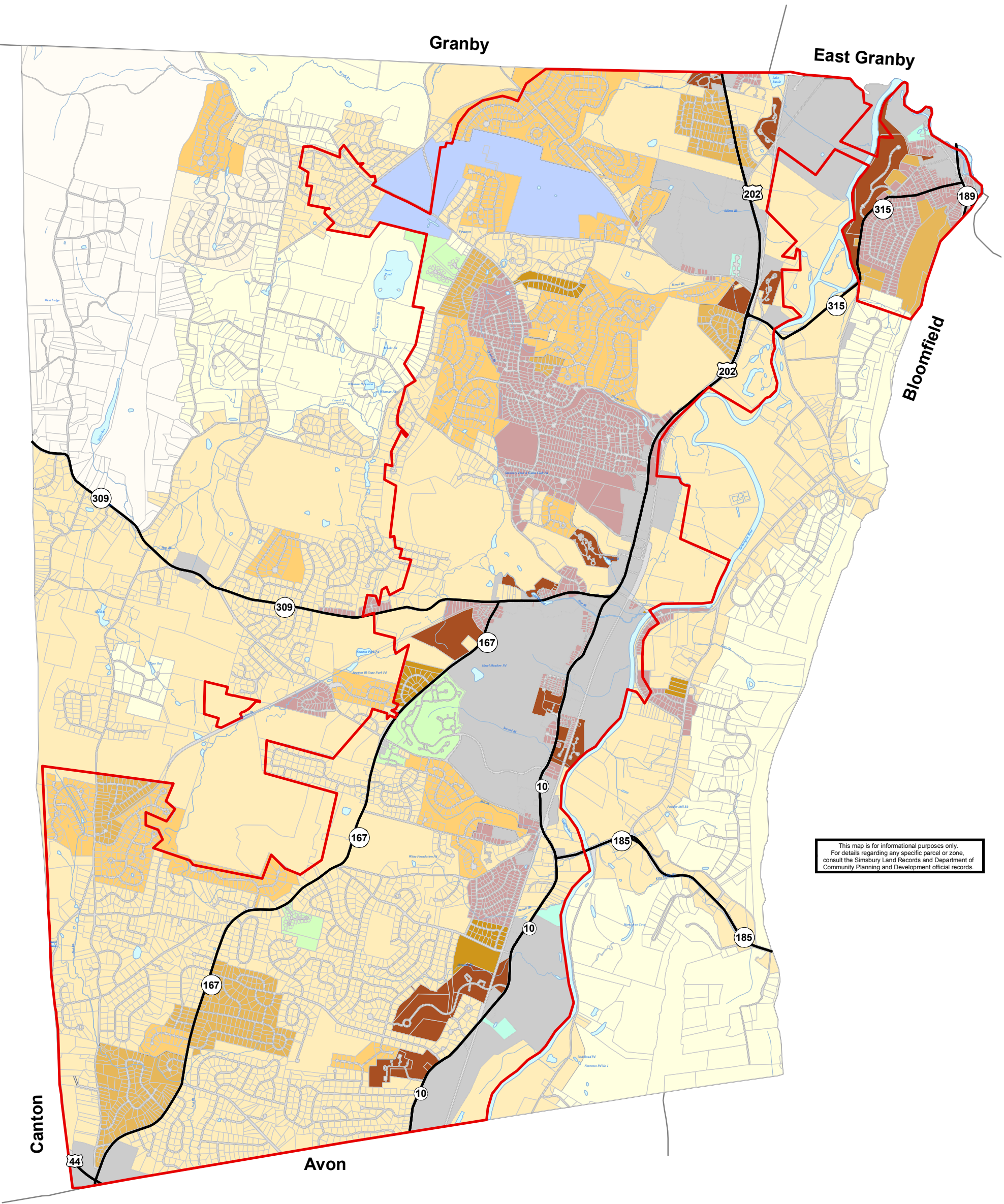




Town of Simsbury
Residential Densities Plan



This map is for informational purposes only.
For details regarding any specific parcel or zone,
consult the Simsbury Land Records and Department of
Community Planning and Development official records.

Legend

Sewer Service	R15 < 2.90 units/acre	R80 < 0.54 units/acre
Non-Residential Zoning	R25 < 1.74 units/acre	R80OS < 0.54 units/acre
AZ	R30 < 0.45 units/acre	R160 < 0.27 units/acre
CZ	R40 < 1.09 units/acre	RD
HOD < 1.74 units/acre	R40 OS < 1.09 units/acre	

0 3,250 Feet
1 inch equals 3,250 feet
MAP EFFECTIVE 11/3/07

PREPARED BY THE
TOWN OF SIMSBURY
ENGINEERING DEPARTMENT
IN CONJUNCTION WITH:

NEW ENGLAND
GEOSYSTEMS
Geographic Information System Consultants
1000 Bailey Street, Suite 200
Glastonbury, CT 06033-3000