



SIMSBURY PEDESTRIAN AND BICYCLE MASTER PLAN

Advisory Committee Meeting #2



Monday, November 13th, 2017 | 5 PM



FITZGERALD & HALLIDAY, INC.
Innovative Planning, Better Communities

COGENT



MEETING AGENDA

1. Welcome and Introductions
2. Project Overview
3. Recap of Committee Meeting #1
4. Progress Update
5. Signage and Wayfinding
6. Next Steps



WELCOME AND INTRODUCTIONS



THE PROJECT TEAM

Project lead



Town of Simsbury
Public Works Department

The Community!

Advisory Committee



The Public



Consultant Team

Consultant lead:



With assistance from:

COGENT



ADVISORY COMMITTEE

Purpose

- Act as a liaison to the community about this project
- Provide insight and expertise on local conditions and issues
- Brainstorm ideas and concepts with the project team
- Review and comment on draft plan
- Support the consensus of this group within the community

PROJECT OVERVIEW





PROJECT PURPOSE

- Establish short and long term goals to improve upon the Town's pedestrian and bicycling infrastructure
- Develop recommendations to improve walking and bicycling facilities
- Make walking and bicycling safer and more convenient in Simsbury





PROJECT SCHEDULE





HOW DOES SIMSBURY BENEFIT?

Property Value



1 point increase of WalkScore is worth \$3K in home value.

Studies have shown that homes closer to bike paths are more valuable.

Healthy Living



Vibrant Public Spaces



People who live in neighborhoods with sidewalks on most streets are 47% more likely to be active at least 30 minutes a day.

Sense of Community



Environmentally Friendly



Access to Resources



Cycling is the 2nd most popular outdoor activity in the U.S.

47% of Americans say they would like more bike facilities in their communities.

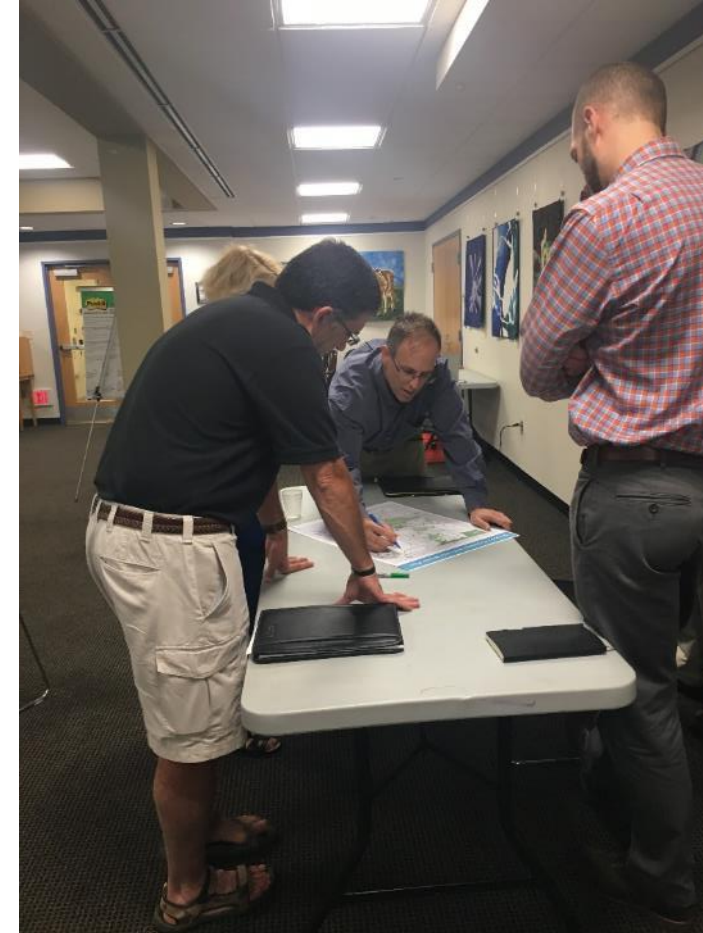
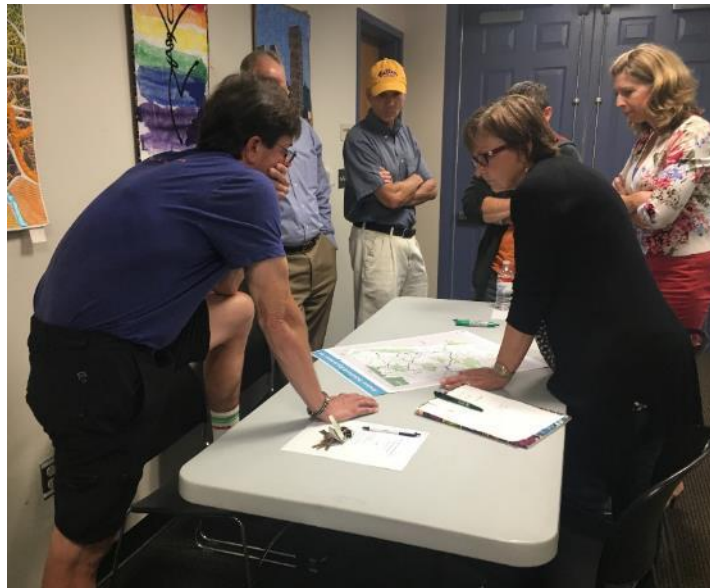


ADVISORY COMMITTEE MEETING #1 RECAP



ADVISORY COMMITTEE MEETING #1 RECAP

- Project overview presentation
- Vision and goals discussion
- Mapping key destinations and routes activity





WHY VISION & GOALS?

- Defines the planning effort
- Sets the stage for future desires for bicycle and pedestrian travel for Simsbury
- Consider...
 - What is the best way to document our successes?
 - How can we set or identify our most attainable implementation options moving forward?





VISION ACTIVITY

What do you want to see for the *future* of walking and bicycling in Simsbury?

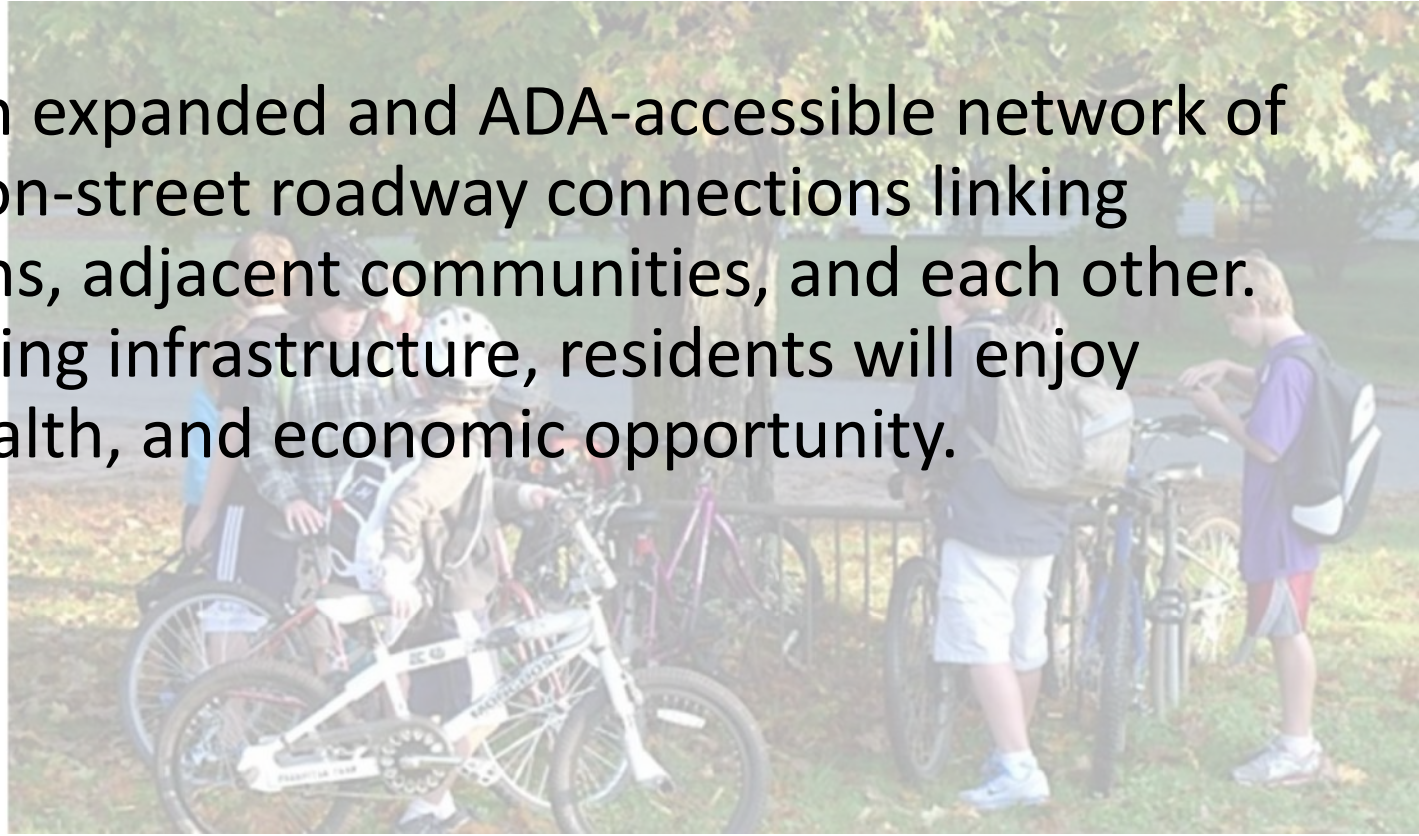
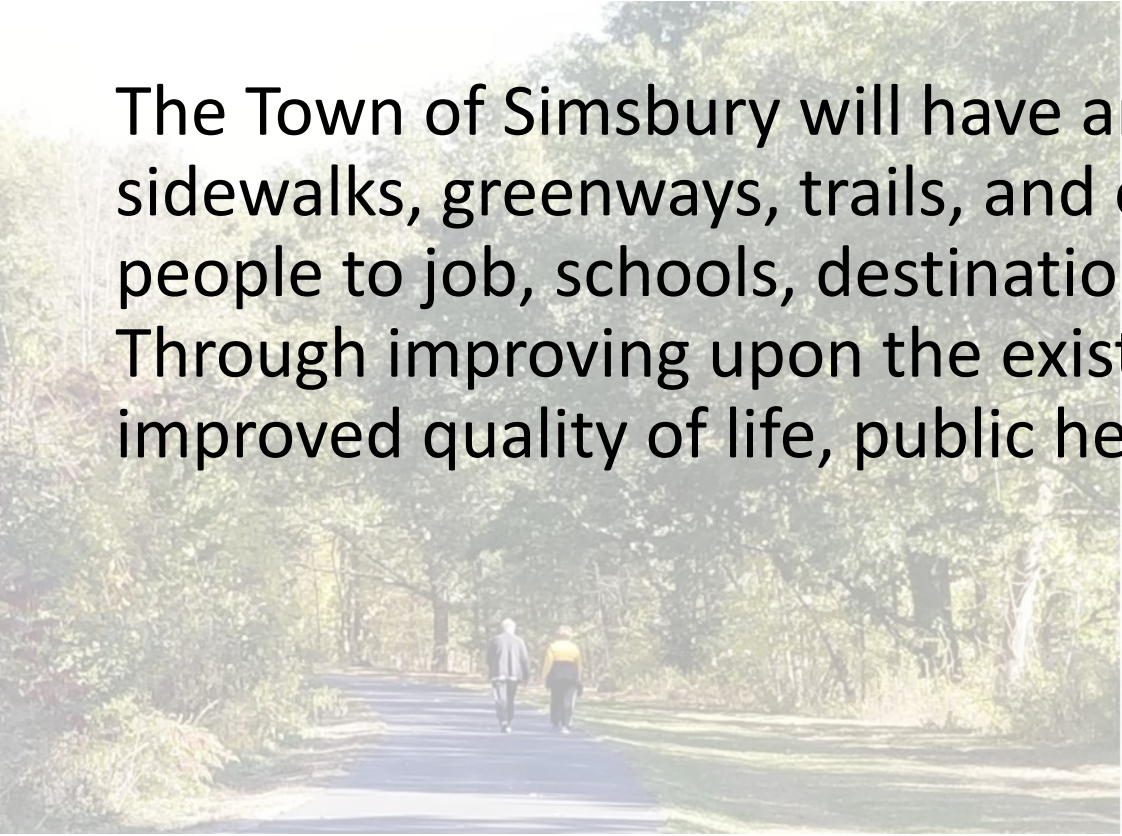




DRAFT VISION

What do we want to be?

The Town of Simsbury will have an expanded and ADA-accessible network of sidewalks, greenways, trails, and on-street roadway connections linking people to job, schools, destinations, adjacent communities, and each other. Through improving upon the existing infrastructure, residents will enjoy improved quality of life, public health, and economic opportunity.

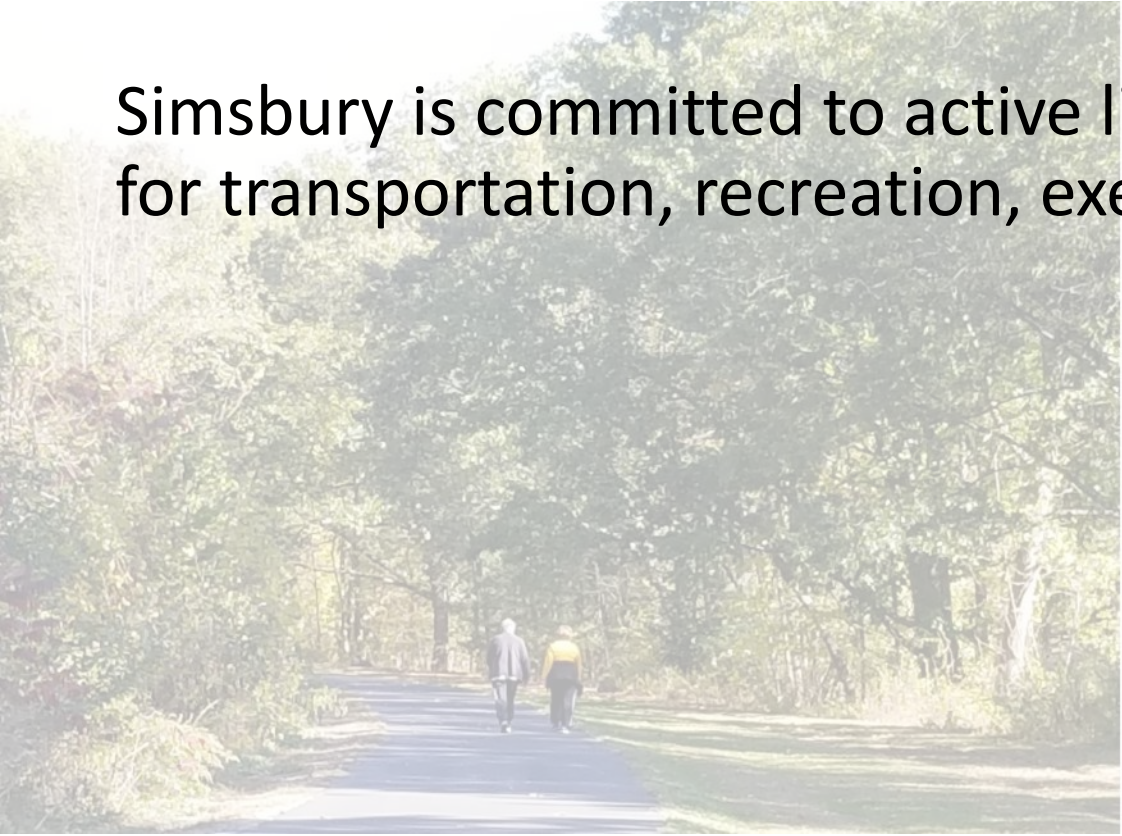




DRAFT MISSION

Why are we doing this?

Simsbury is committed to active lifestyles that includes walking and bicycling for transportation, recreation, exercise, and overall quality of life.





GOAL ACTIVITY

What has to occur to make *your future* in Simsbury possible?





DRAFT GOALS

What must we do to realize the vision?

1. Improve pedestrian and bicyclist safety for all community members, regardless of age, ability, and experience.
2. Improve connections to and between key destinations for employment, education, culture, recreation, and shopping within town and the overall region.
3. Educate all users, including pedestrians, bicyclists, and motorists, on how to safely share the road.
4. Capture the economic benefits for local businesses that result from accessibility and an active, mobile community are sparked by an increase of pedestrians and bicyclists.
5. Foster the development of a cohesive Town brand that promote the culture of active transportation through coordinated and consistent designs, including signage.
6. Identify and maintain necessary infrastructure and resources to provide comfortable, attractive, and safe amenities for pedestrian and bicycle use.



OUTREACH UPDATE





POP UP OUTREACH EVENT #1

ChiliFest

- October 28th
- Share tent with CRCOG Complete Streets
- Had short conversations with 40-50 people
- Promoted online survey
- Asked what would encourage walking
 - Sidewalks
 - Crossings





POP UP OUTREACH EVENT #2

Fitzgerald's

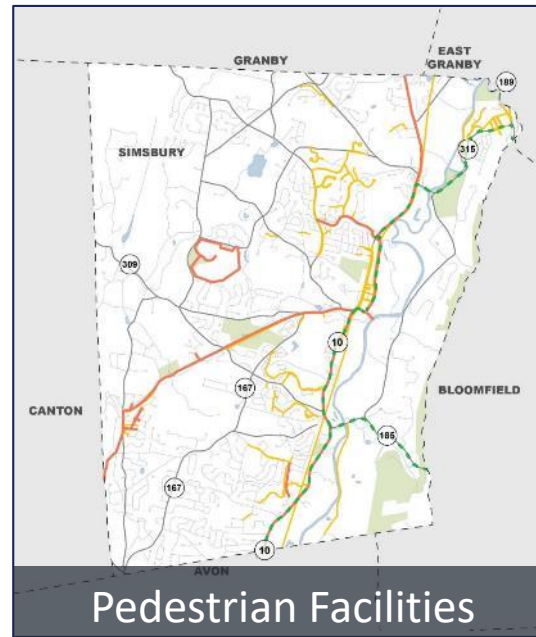
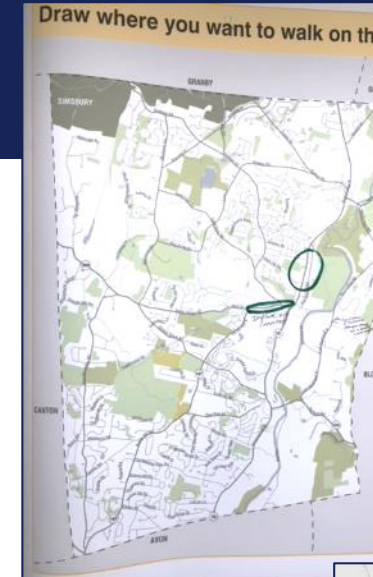
- November 13th
- Had short conversations with over 30 people
- Promoted online survey
- Asked what would encourage walking
 - Sidewalks
 - Pedestrian lighting
 - Traffic calming



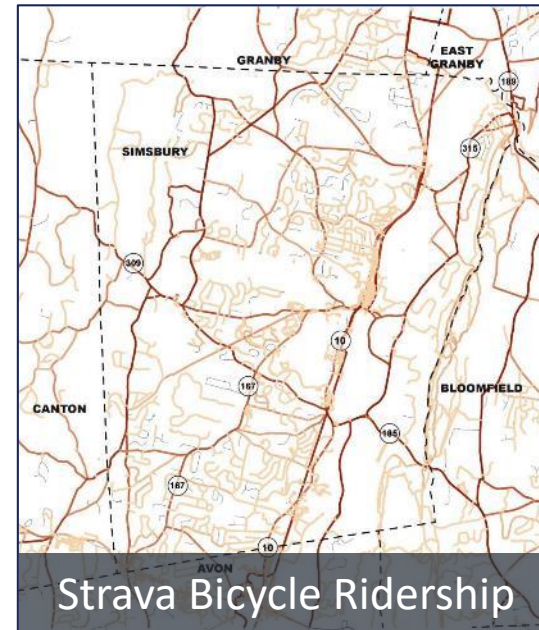


NETWORK INVENTORY

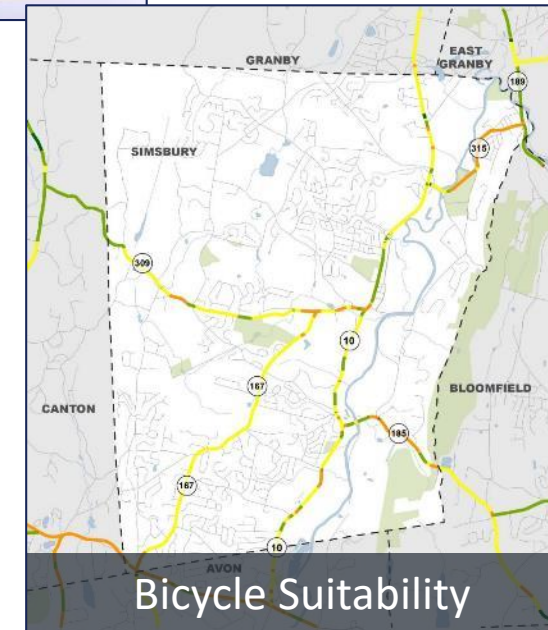
- Data collection
- Existing conditions analysis
- Input from Committee meeting and pop-ups



Pedestrian Facilities



Strava Bicycle Ridership



Bicycle Suitability



ONLINE SURVEY

What We Have Heard So Far

498 people have taken the survey





ONLINE SURVEY

Pedestrian Safety – A Snapshot of Responses

Lack of sidewalks

“Lack of sidewalks or pathways or even adequately wide shoulders on any of the roads...”

“...many busy roadways outside town center lack sidewalks or marked shoulders.”

No lighting

“Poor or inconsistent lighting makes me feel unsafe...especially at dusk or at night.”

“Lighting is terrible however one of the charms of Simsbury is that there are not street lights everywhere.”

Conflicts with other modes

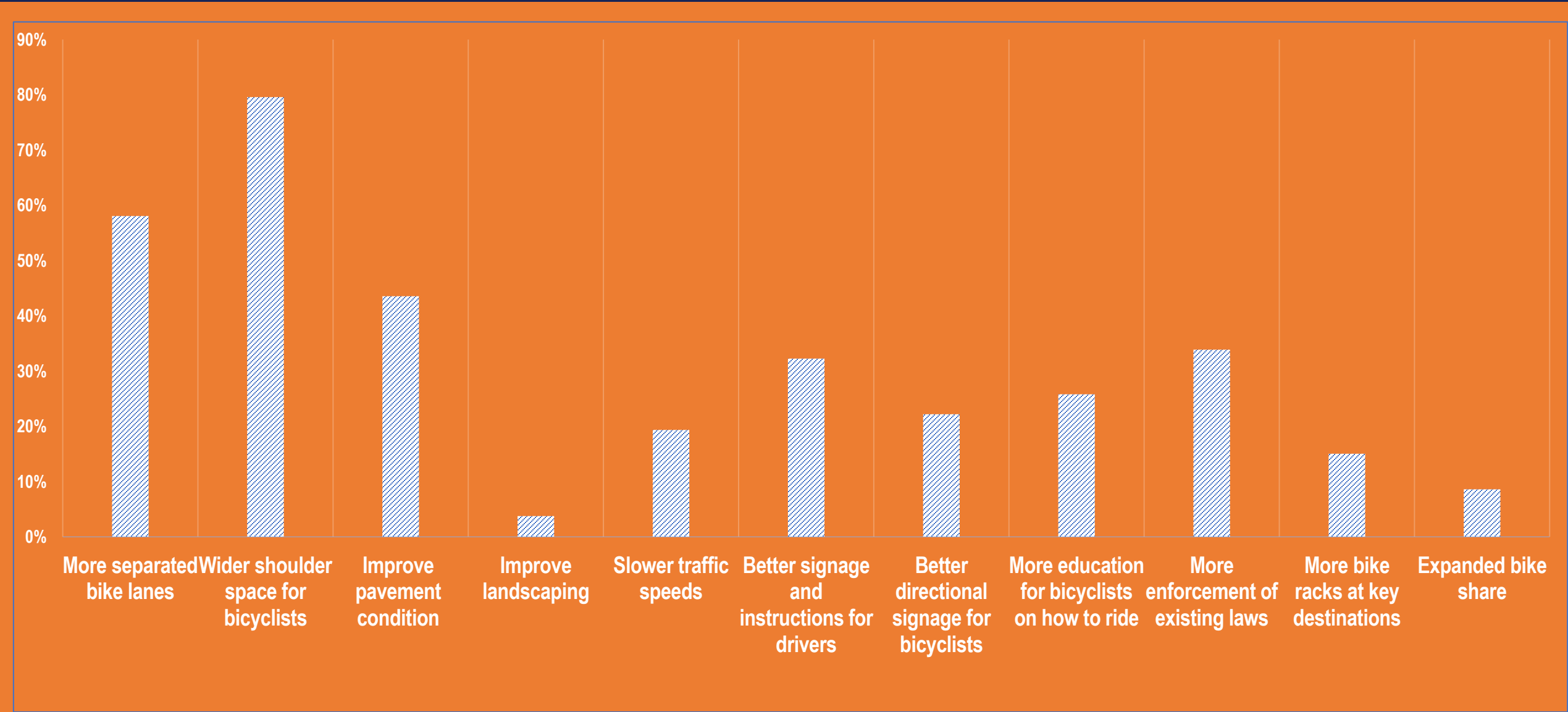
“Cars fly by...even along curvy, windy roads!...I always assume they are also distracted.”

“Bikes use sidewalks even when there are bike lanes.”



ONLINE SURVEY

What types of improvements would encourage you to bicycle on roadways in Simsbury more?





ONLINE SURVEY

- Spread the word to take the survey before December 1st
- Complete the whole survey for a chance to win a brand new bike stand or a fitbit

Town of Simsbury Pedestrian and Bicycle Master Plan

Welcome to the Online Survey for the *Town of Simsbury Pedestrian and Bicycle Master Plan*.

We want to hear what you think!

Thank you for taking a few minutes to complete this brief survey about the walking and bicycling in Simsbury. Your responses will help guide improvements for pedestrians and bicyclists throughout the Town. This survey is being conducted as part of the *Town of Simsbury Pedestrian and Bicycle Master Plan*. To learn more, please visit the Town website at www.simsbury-ct.gov.

Next

EDUCATION AND ENFORCEMENT





EDUCATION AND ENFORCEMENT

- Explore desired education programs moving forward
- Explore enforcement successes of other towns



QUESTION 1: EDUCATION AND ENFORCEMENT

Do you feel that additional school programming for walking and bicycling safety and skills is an important focus for the next 5 years? 10 years?

1. Yes
2. No
3. Not sure



- » Use walkways where possible.
- » Obey all traffic signs and signals
- » Choose routes that provide space to walk and have the least amount of traffic and lowest speeds.
- » Look for traffic at all driveways and intersections.
- » If possible, cross at a crosswalk or at an intersection with a walk signal.
- » Stop at the curb and look for traffic in all directions (left, right, left, to the front and behind).
- » Wait until no traffic is coming and start crossing; keep looking for traffic as you cross the road.
- » Walk across the road. Do not run.
- » Avoid poison ivy and check for ticks.
- » Always wear a helmet when biking.



Why walk or bike to school?

To help kids...

- ✓ Reach the recommended goal of 60 minutes of physical activity every day.
- ✓ Arrive at school energized & ready to learn.
- ✓ Leave the car behind & reduce dependence on fossil fuels.
- ✓ Take an active role in their well-being.
- ✓ Learn more about the world around them.



To help communities...

- ✓ Support bicycle and pedestrian-friendly infrastructure.
- ✓ Reduce speeds in school zones & neighborhoods.
- ✓ Provide education on pedestrian and bicycle safety.
- ✓ Build a sense of neighborhood.

www.saferoutesinfo.org

www.ctsaferoutes.org

www.walkitbikeitct.org

www.letsmove.gov



Safe Routes to School



Tootin' Hills School
West Simsbury, CT



QUESTION 2: EDUCATION AND ENFORCEMENT

More specifically, is this school programming for walking and bicycling safety and skills as important as enhancing the sidewalk network in key areas of town?

1. Yes
2. No
3. Not sure



QUESTION 3: EDUCATION AND ENFORCEMENT

Do you feel Simsbury can benefit from a public relations / marketing campaign directed towards drivers, cyclists, and pedestrians on how to share the road?

1. Yes
2. No
3. Not sure

Examples from Statewide Campaign





QUESTION 4: EDUCATION AND ENFORCEMENT

Do you think bicyclist traffic violations should be better enforced by police in Simsbury?

1. Yes
2. No
3. Not sure



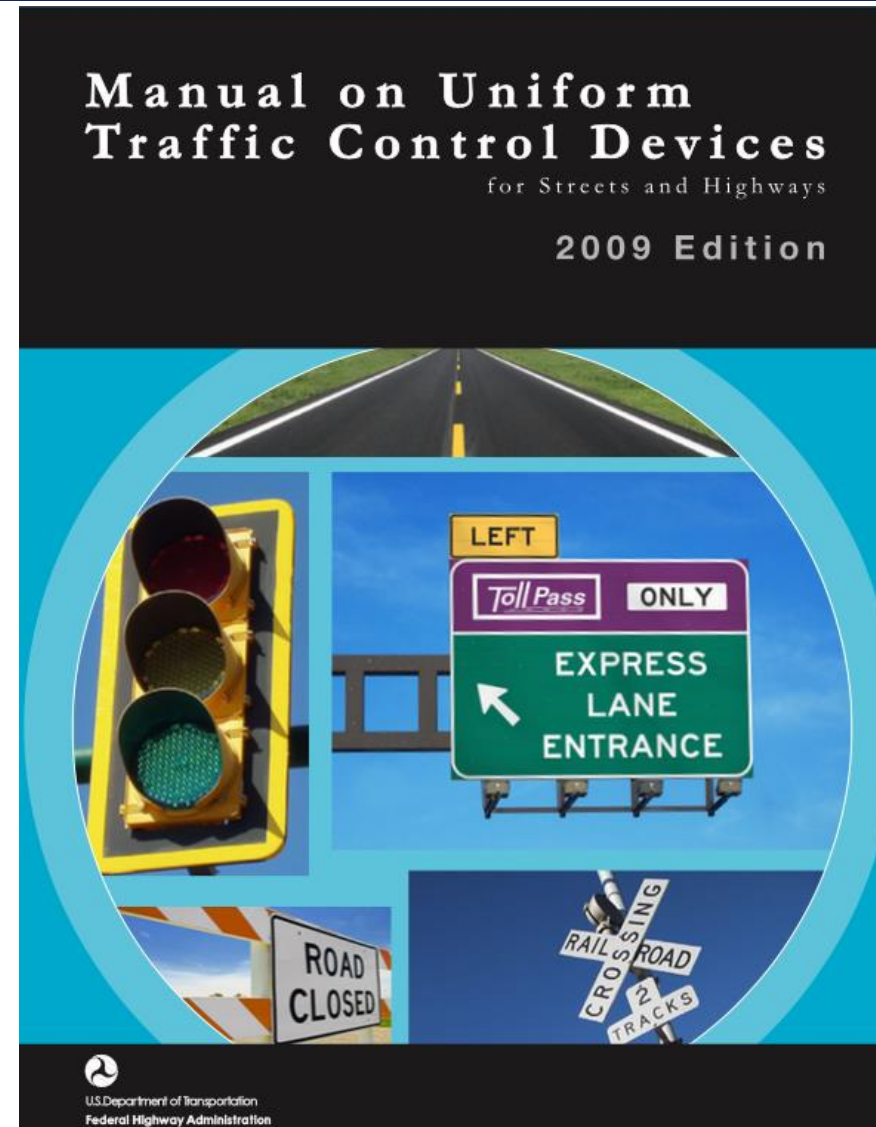
SIGNAGE & WAYFINDING



SIGNAGE & WAYFINDING

MUTCD

1. Signage & pavement markings for on-street network
2. Signage & pavement markings for trails
3. Everything else!
4. Shall, should, and may
5. "Signs" vs. "plaques"





TYPES OF SIGNS

A Primer

Regulatory, Warning, Guide



**Manual on Uniform
Traffic Control Devices**
for Streets and Highways
2009 Edition





TYPES OF SIGNS

A Primer

Regulatory, Warning, Guide



**Manual on Uniform
Traffic Control Devices**
for Streets and Highways
2009 Edition





TYPES OF SIGNS

A Primer

Regulatory, Warning, Guide



**Manual on Uniform
Traffic Control Devices**
for Streets and Highways
2009 Edition





TYPES OF SIGNS

A Primer

Regulatory, Warning, Guide



**Manual on Uniform
Traffic Control Devices**
for Streets and Highways
2009 Edition





2009 Edition

Page 793

Figure 9B-2. Regulatory Signs and Plaques for Bicycle Facilities



Sect. 9B.03



FITZGERALD & HALLIDAY, INC.
Innovative Planning, Better Communities

COGENT

2009 Edition

Page 797

Figure 9B-3. Warning Signs and Plaques and Object Markers for Bicycle Facilities



Sect. 9B.18

Page 800

2009 Edition

Figure 9B-4. Guide Signs and Plaques for Bicycle Facilities (Sheet 2 of 2)



Option:

01 To establish a unique identification (route designation) for a State or local bicycle route, the Bicycle Route (M1-8, M1-8a) sign (see Figure 9B-4) may be used.

Standard:

02 The Bicycle Route (M1-8) sign shall contain a route designation and shall have a green background with a retroreflectorized white legend and border. The Bicycle Route (M1-8a) sign shall contain the same information as the M1-8 sign and in addition shall include a pictograph or words that are associated with the route or with the agency that has jurisdiction over the route.

Guidance:

03 *Bicycle routes, which might be a combination of various types of bikeways, should establish a continuous routing.*

Sect. 9B.21

December 2009

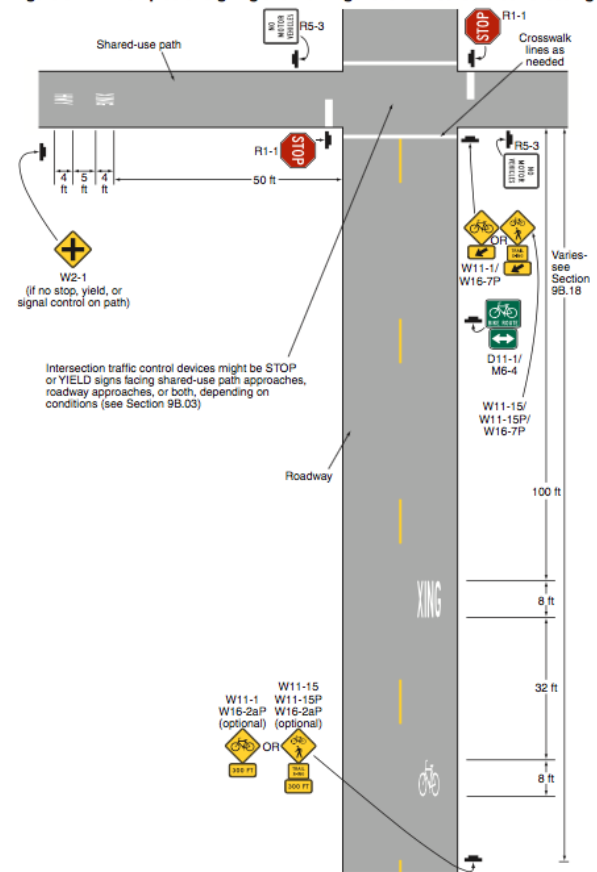


PAVEMENT MARKINGS

2009 Edition

Page 803

Figure 9B-7. Examples of Signing and Markings for a Shared-Use Path Crossing



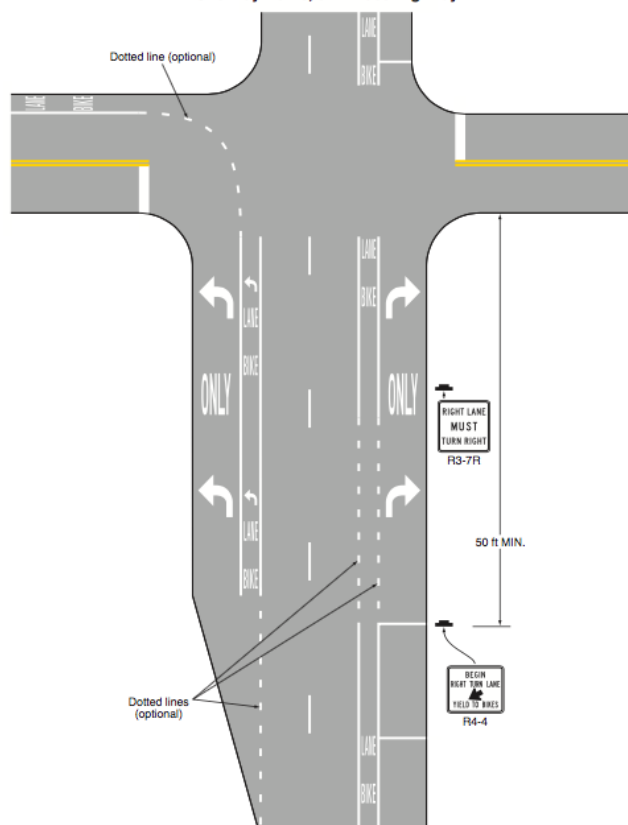
December 2009

Sect. 9B.22

2009 Edition

Page 807

Figure 9C-1. Example of Intersection Pavement Markings—Designated Bicycle Lane with Left-Turn Area, Heavy Turn Volumes, Parking, One-Way Traffic, or Divided Highway



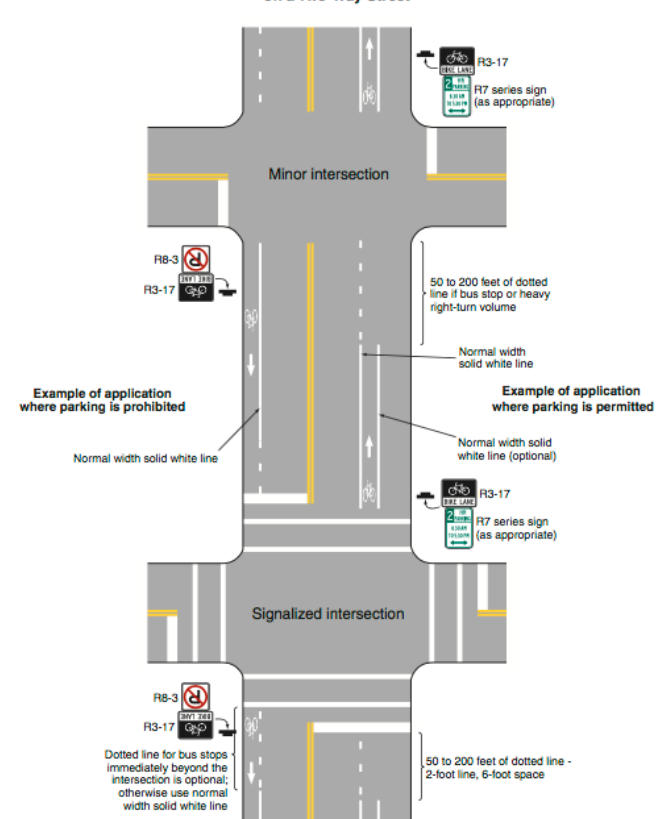
December 2009

Sect. 9C.04

2009 Edition

Page 813

Figure 9C-6. Example of Pavement Markings for Bicycle Lanes on a Two-Way Street



December 2009

Sect. 9C.07



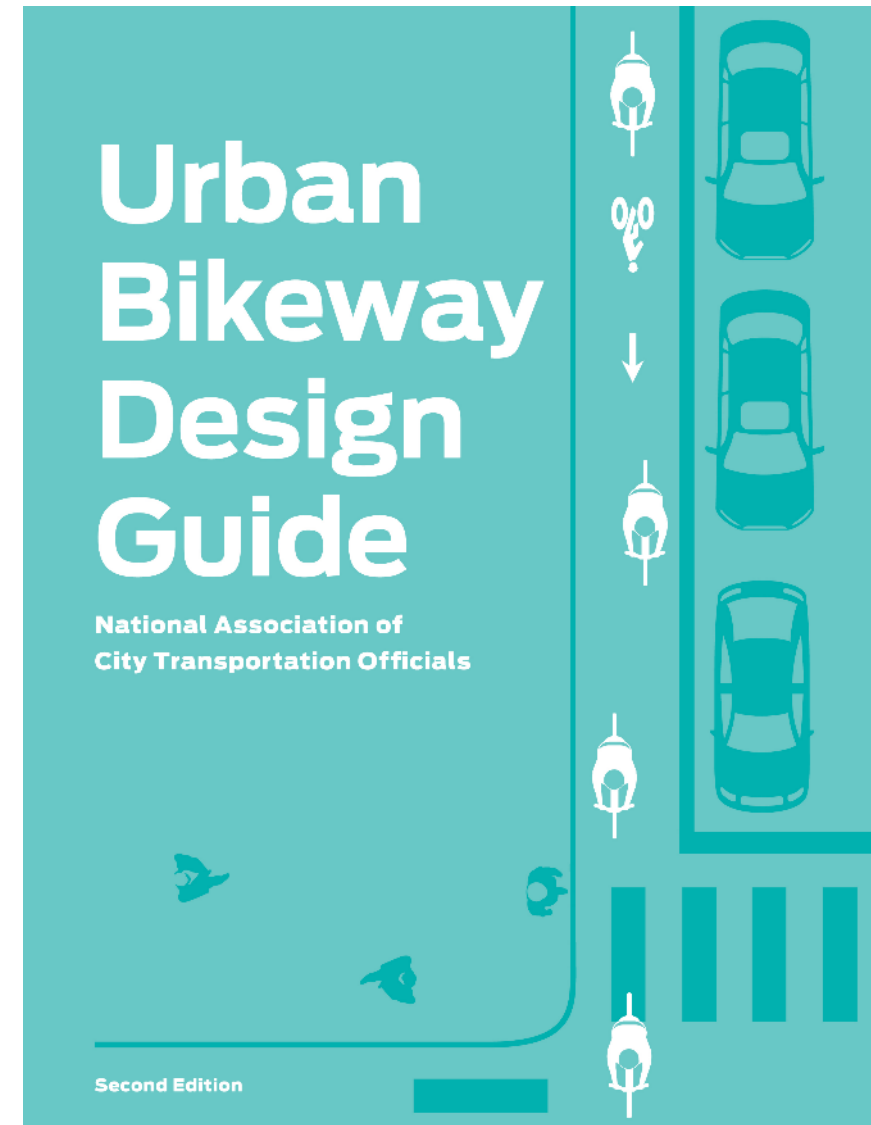
SIGNAGE





NACTO DESIGN GUIDE

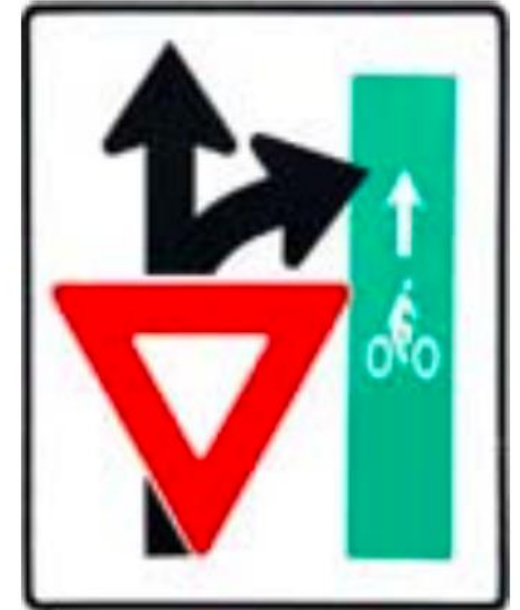
1. Street design palette
2. Supplementary to MUTCD
- ~~3. Shall, Should, and May Required, Recommended, and Optional~~





NACTO DESIGN GUIDE

1. Street design palette
2. Supplementary to MUTCD
- ~~3. Shall, Should, and May Required, Recommended, and Optional~~





ONLINE SURVEY RESULTS

Signage is important!

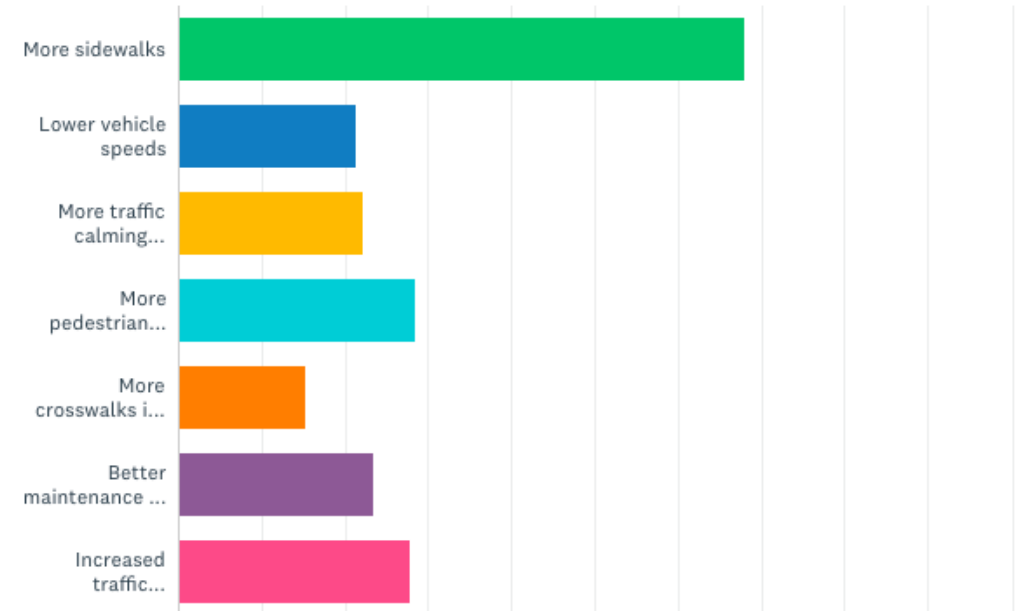
Better signs would / might:

- Lead to greater trail use
- Increase the number of people walking along streets
- Increase the number of people biking on streets
- Reduce # of people driving to trails

Q8

What types of improvements would encourage you to walk alongside Simsbury's roads more? (select up to five responses)

Answered: 306 Skipped: 68





WAYFINDING

1. Wayfinding to follow a route
2. Wayfinding to find a destination



WAYFINDING

1. Wayfinding to follow a route





WAYFINDING

1. Wayfinding to follow a route





WAYFINDING

1. Wayfinding to follow a route





WAYFINDING

1. Wayfinding to follow a route





WAYFINDING

1. Wayfinding to follow a route





WAYFINDING

1. Wayfinding to follow a route





WAYFINDING

1. Wayfinding to follow a route





WAYFINDING

1. Wayfinding to follow a route





WAYFINDING

1. Wayfinding to follow a route
2. Wayfinding to find a destination



WAYFINDING

1. Wayfinding to follow a route
2. Wayfinding to find a destination





WAYFINDING

1. Wayfinding to follow a route
2. Wayfinding to find a destination





WAYFINDING

1. Wayfinding to follow a route
2. Wayfinding to find a destination





WAYFINDING

1. Wayfinding to follow a route
2. Wayfinding to find a destination





WAYFINDING

1. Wayfinding to follow a route
2. Wayfinding to find a destination





WAYFINDING

1. Wayfinding to follow a route
2. Wayfinding to find a destination





WAYFINDING

1. Wayfinding to follow a route
2. Wayfinding to find a destination





WAYFINDING

1. Wayfinding to follow a route
2. Wayfinding to find a destination





WAYFINDING

1. Wayfinding to follow a route
2. Wayfinding to find a destination





EFFECTIVE SIGNAGE & WAYFINDING

5 Requirements

1. Fulfill a need
2. Command attention
3. Convey clear, simple meaning
4. Command respect from road and trail users
5. Give adequate time for proper response



LOCAL SIGNAGE

Existing pedestrian & bicycle
signage in Simsbury...



LOCAL SIGNAGE

Current pedestrian & bike
signage in Simsbury





LOCAL SIGNAGE

Current pedestrian & bike
signage in Simsbury





LOCAL SIGNAGE

Current pedestrian & bike
signage in Simsbury





LOCAL SIGNAGE

Current pedestrian & bike
signage in ~~Simsbury~~





LOCAL SIGNAGE

Current pedestrian & bike
signage in ~~Simsbury~~





LOCAL SIGNAGE

Current pedestrian & bike
signage in Simsbury





LOCAL SIGNAGE

Current pedestrian & bike
signage in Simsbury





LOCAL SIGNAGE

Current pedestrian & bike
signage in Simsbury





LOCAL SIGNAGE

Current pedestrian & bike
signage in Simsbury





LOCAL SIGNAGE

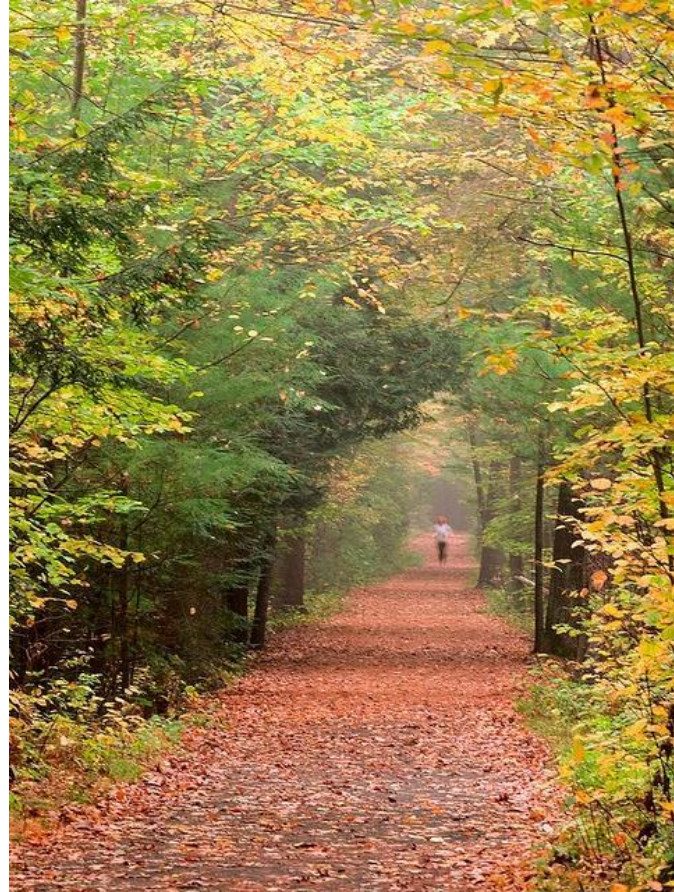
Current pedestrian & bike
signage in Simsbury





LOCAL SIGNAGE

75 miles of trails to connect to commercial, residential, community, & natural resources





LOCAL SIGNAGE

Existing Facilities



Streetscape
Furniture



Sidewalk Network



Sidewalk Seating



Safe Pedestrian Crossings



Bike Station

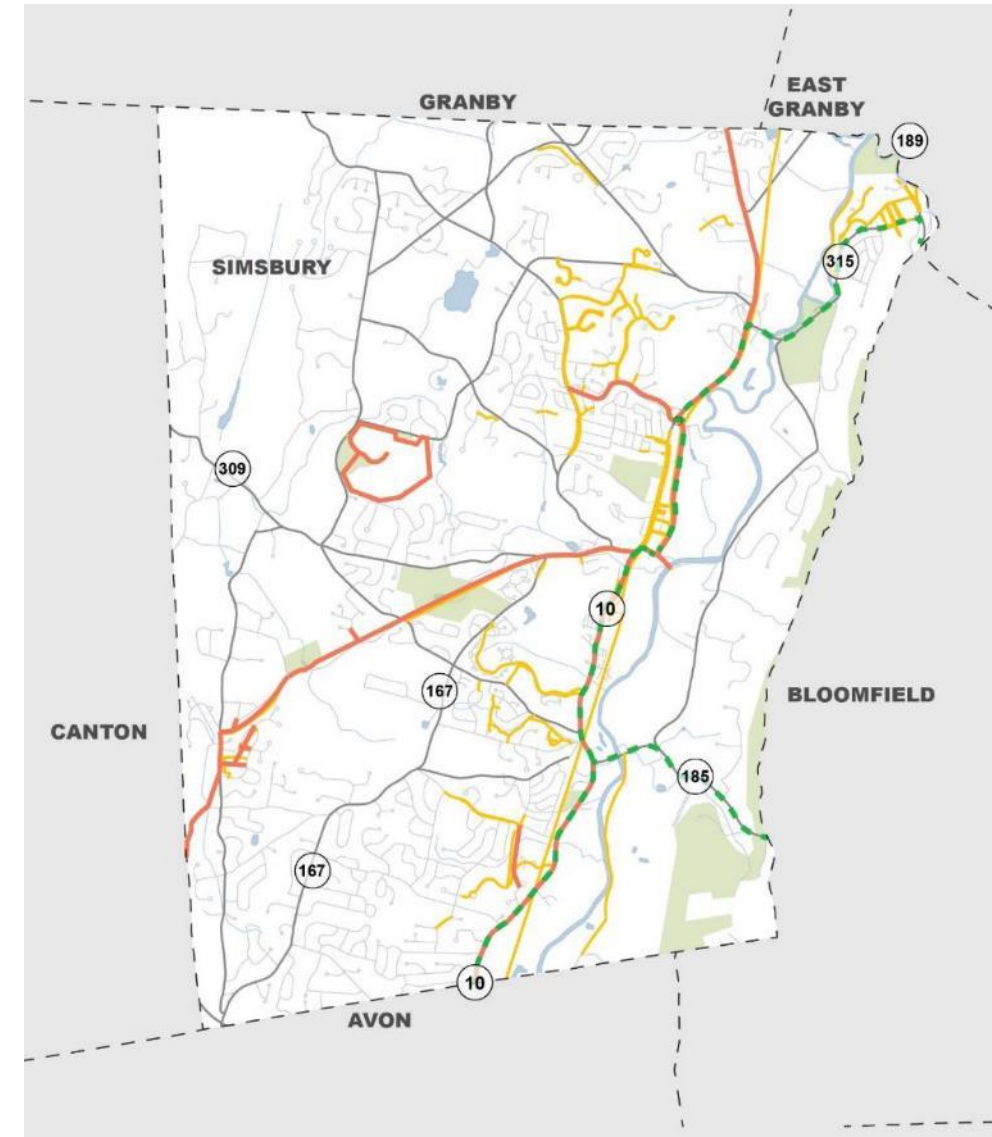


Clear Signage



LOCAL SIGNAGE

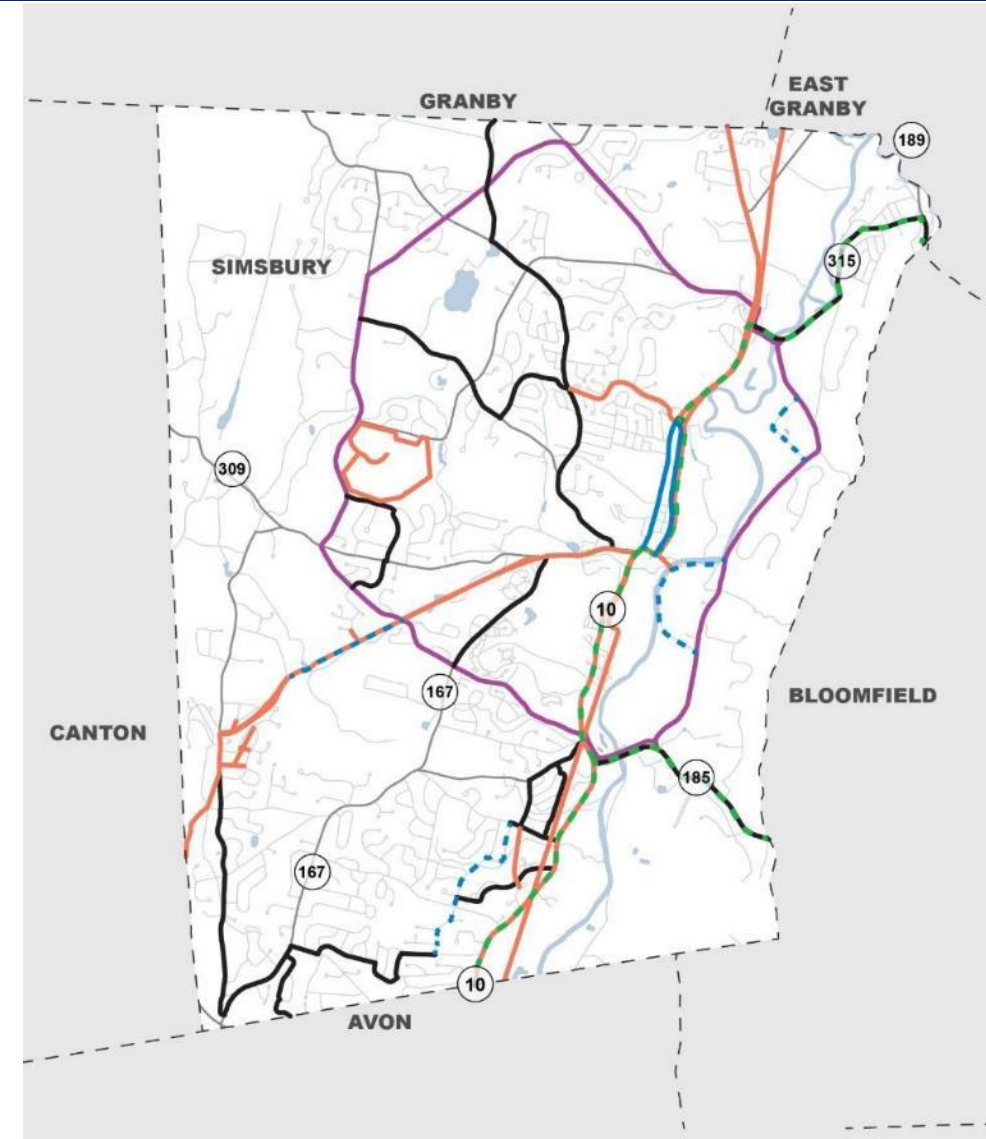
Existing pedestrian facilities





LOCAL SIGNAGE

Existing bicycle facilities





LOCAL SIGNAGE

Wayfinding signage
plan for Simsbury?



LOCAL SIGNAGE

Wayfinding signage
plan for Simsbury?





LOCAL SIGNAGE

Wayfinding signage
plan for Simsbury?

Spectrum of choices:



LOCAL SIGNAGE

Wayfinding signage
plan for Simsbury?

Spectrum of choices:





LOCAL SIGNAGE

Wayfinding signage
plan for Simsbury?

Spectrum of choices:





LOCAL SIGNAGE

Wayfinding signage
plan for Simsbury?

Spectrum of choices:





LOCAL SIGNAGE

Wayfinding signage
plan for Simsbury?

Spectrum of choices:





LOCAL SIGNAGE

Wayfinding signage
plan for Simsbury?

Spectrum of choices:





QUESTION 5: LOCAL SIGNAGE

What do you prefer?

1. Photo 1



2. Photo 2



3. Photo 3





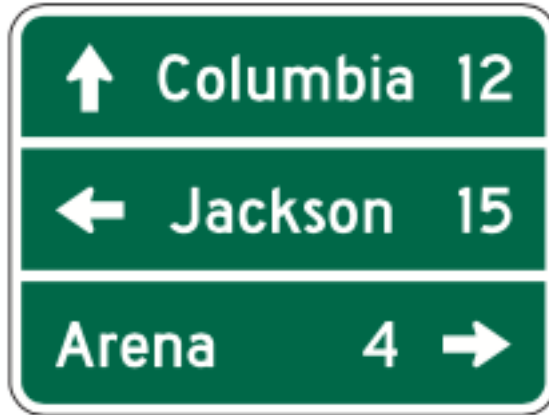
QUESTION 6: LOCAL SIGNAGE

How much information do you want on your local signage?

1. Photo 1



2. Photo 2



3. Photo 3



4. Photo 4





QUESTION 7: LOCAL SIGNAGE

Which do you prefer?

1. Photo 1



2. Photo 2





LOCAL SIGNAGE

Identification as Part of a Larger Network

- Is it important that trails in Simsbury are called out as a part of a greater system?

Farmington





LOCAL SIGNAGE

Identification as Part of a Larger Network

- Is it important that trails in Simsbury are called out as a part of a greater system?

Avon





QUESTION 8: LOCAL SIGNAGE

Is it important that trails in Simsbury are called out as a part of a greater system?

Identification as part of a large network

1. Yes
2. No
3. Not Sure





QUESTION 9: LOCAL SIGNAGE

Which do you prefer in terms of how Simsbury marks the ECG?

1. Photo 1

2. Photo 2

3. Photo 3

4. Photo 4





LOCAL COMMERCIAL SIGNAGE



QUESTION 10: LOCAL COMMERCIAL SIGNAGE

Do you think commercial signage should be regulated on the trails?

Opportunities: Local Sign Ordinance

1. Yes
2. No
3. Not Sure





QUESTION 11: LOCAL COMMERCIAL SIGNAGE

What do you prefer?

1.Photo 1



2.Photo 2



3.Photo 3



4.Photo 4





QUESTION 12: OTHER AMENITIES

Do you feel the following features would encourage people to walk or bicycle more in Simsbury?

1. Shade / Shelter
2. Water fountains
3. Both
4. Neither

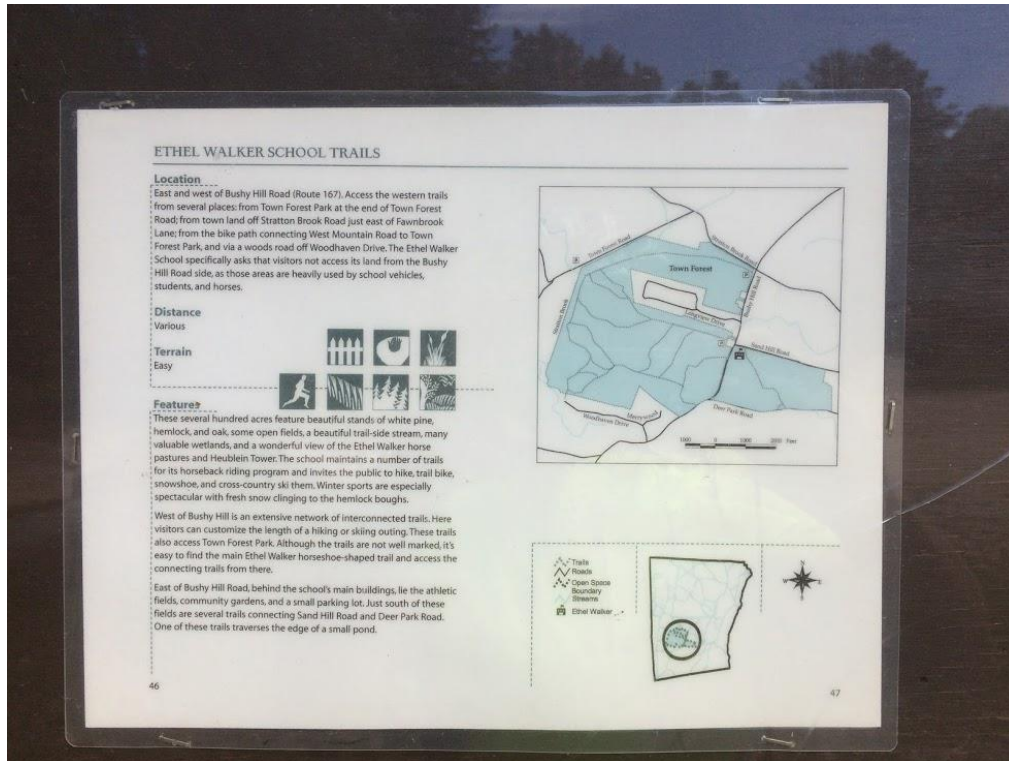




OPPORTUNITIES

Local Sign Ordinance

Interpretive signage





OPPORTUNITIES

Local Sign Ordinance

Interpretive signage





QUESTION 13: OPPORTUNITIES - LOCAL SIGN ORDINANCE

How should Simsbury handle interpretive signage?

1. Current approach
2. NPS Style
3. Not sure



A person wearing a white t-shirt, black shorts, and a bicycle helmet is riding a bicycle on a wooden bridge deck. The bridge has a blue metal railing and is surrounded by lush greenery and flowers. The background shows a clear blue sky and trees.

NEXT STEPS



NEXT STEPS

- Education and enforcement outreach
- Final pop up on November 25th
- Close survey
- Conclude data collection and existing conditions analysis
- Meet with Advisory Committee in late-January 2018
 - Discuss potential recommendations
- Wrap up in February 2018

Simsbury Pedestrian and Bicycle Master Plan



Take our **ONLINE SURVEY** for a chance to **WIN A BIKE
STAND OR FITBIT!!**

www.surveymonkey.com/r/SimsburyPedBikePlan

*These giveaways are possible thanks to the generous donations from the **Bicycle Cellar** and the **Simsbury Main Street Partnership (SMSP)***



THANK YOU