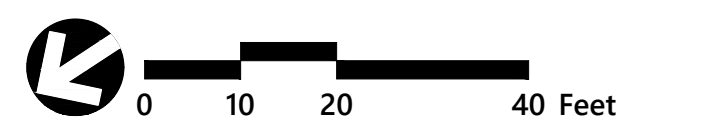
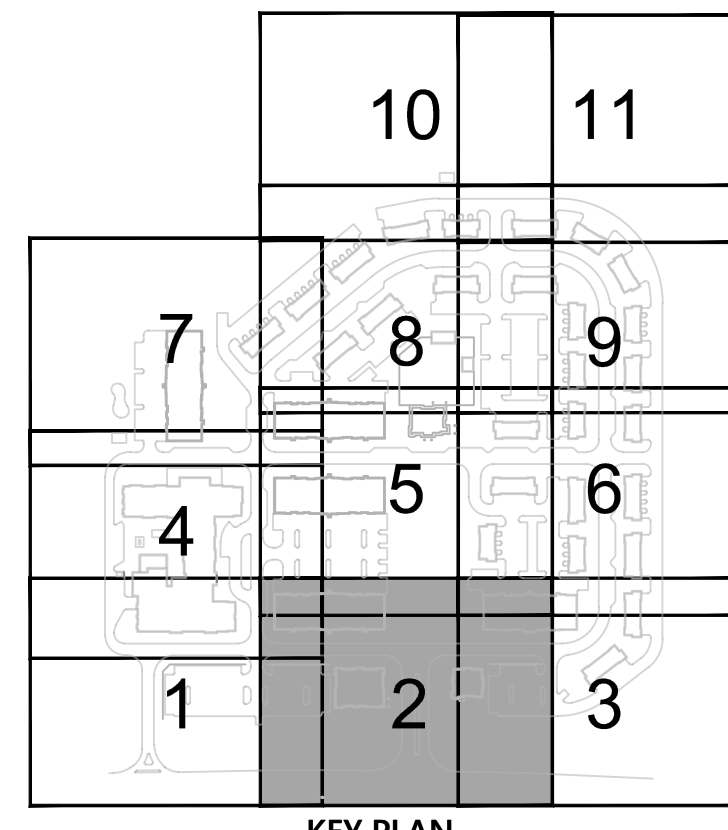
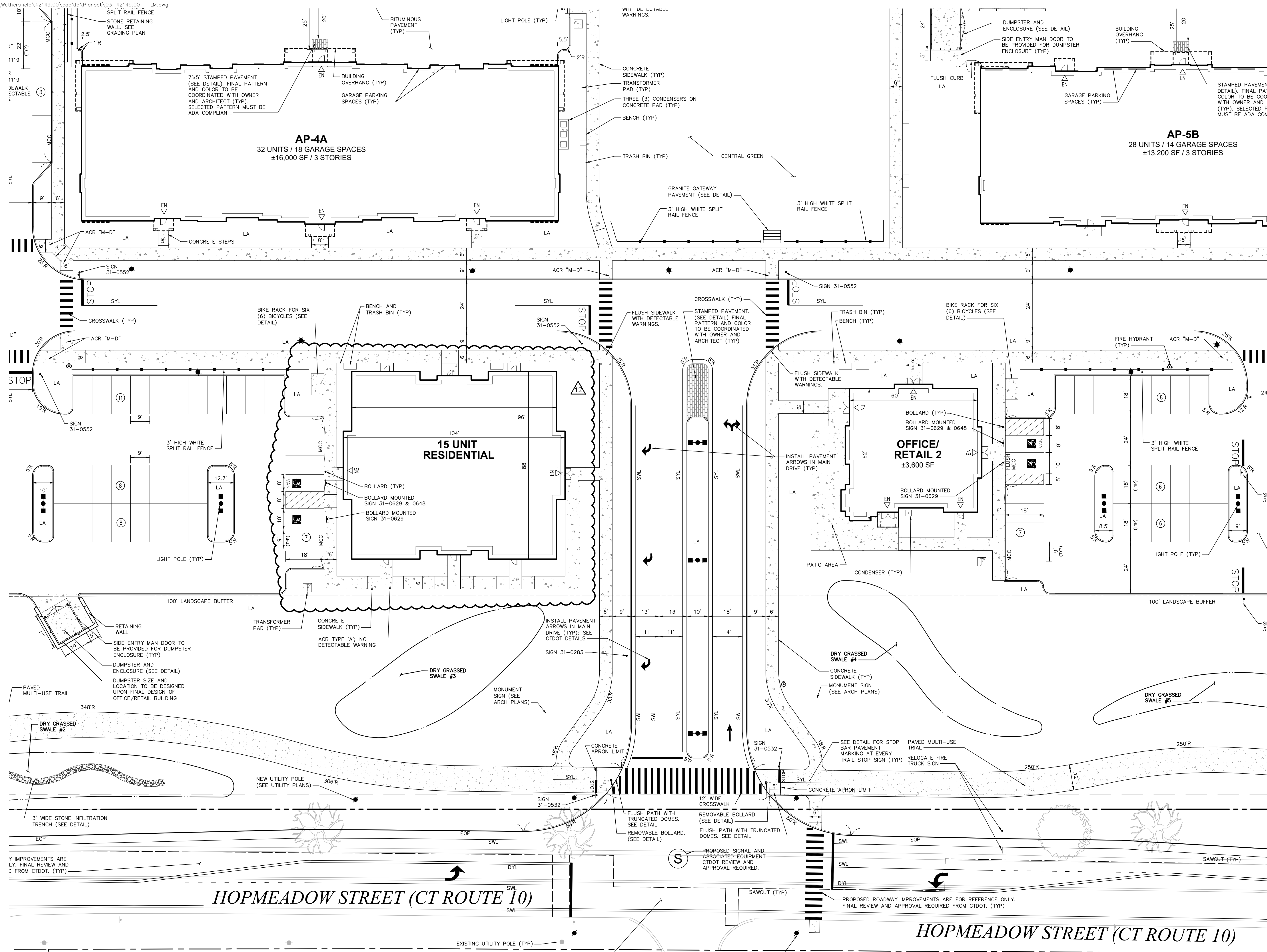




100 Great Meadow Road
Suite 200
Wethersfield, CT 06109
860.807.4300



SL Simsbury, LLC
788 Morris Turnpike
Short Hills, NJ 07078



The Ridge at Talcott Mountain

200 Hopmeadow Street
Simsbury, Connecticut

No.	Revision	Date	Appr'd
1.	TOWN COMMENTS PROGRESS PRINT	5/10/17	
2.	OSTA STEP 2 COMMENTS	7/10/17	
3.	INTERIM FINAL PLANS	9/6/17	
4.	WPCA SUBMISSION	9/15/17	
5.	WPCA SUBMISSION	10/3/17	
6.	CONSTRUCTION	11/10/17	
7.	CLUB HOUSE FOOTPRINT	5/14/18	
8.	CLUB HOUSE AMENITY DESIGN	12/14/18	

12.	SITE PLAN MOD - 15 UNIT RESI.	11/11/21	
Designed by		Date	Checked by
Construction		March 27, 2017	

Layout and Materials Plan 2

Drawing Number

C-4

Sheet of 4 53

Project Number
42149.00

ALL PROPOSED ROADWAY IMPROVEMENTS ARE FOR REFERENCE ONLY. FINAL CTDOT APPROVAL REQUIRED. ALL PROPOSED ROADWAY IMPROVEMENTS WILL BE UNDER A SEPARATE COVER. (TYP)

FOUR (4) NEW SIGNAL POLES; LOCATION AND CONNECTION TO BE COORDINATED WITH CTDOT (TYP)

PROPOSED ROADWAY IMPROVEMENTS ARE FOR REFERENCE ONLY. FINAL REVIEW AND APPROVAL REQUIRED FROM CTDOT. (TYP)

HOPMEADOW STREET (CT ROUTE 10)

HOPMEADOW STREET (CT ROUTE 10)