

Town of Simsbury
Geographic Information System (GIS)



Date Printed: 11/18/2021



*Proposed
6'x22' Porch*

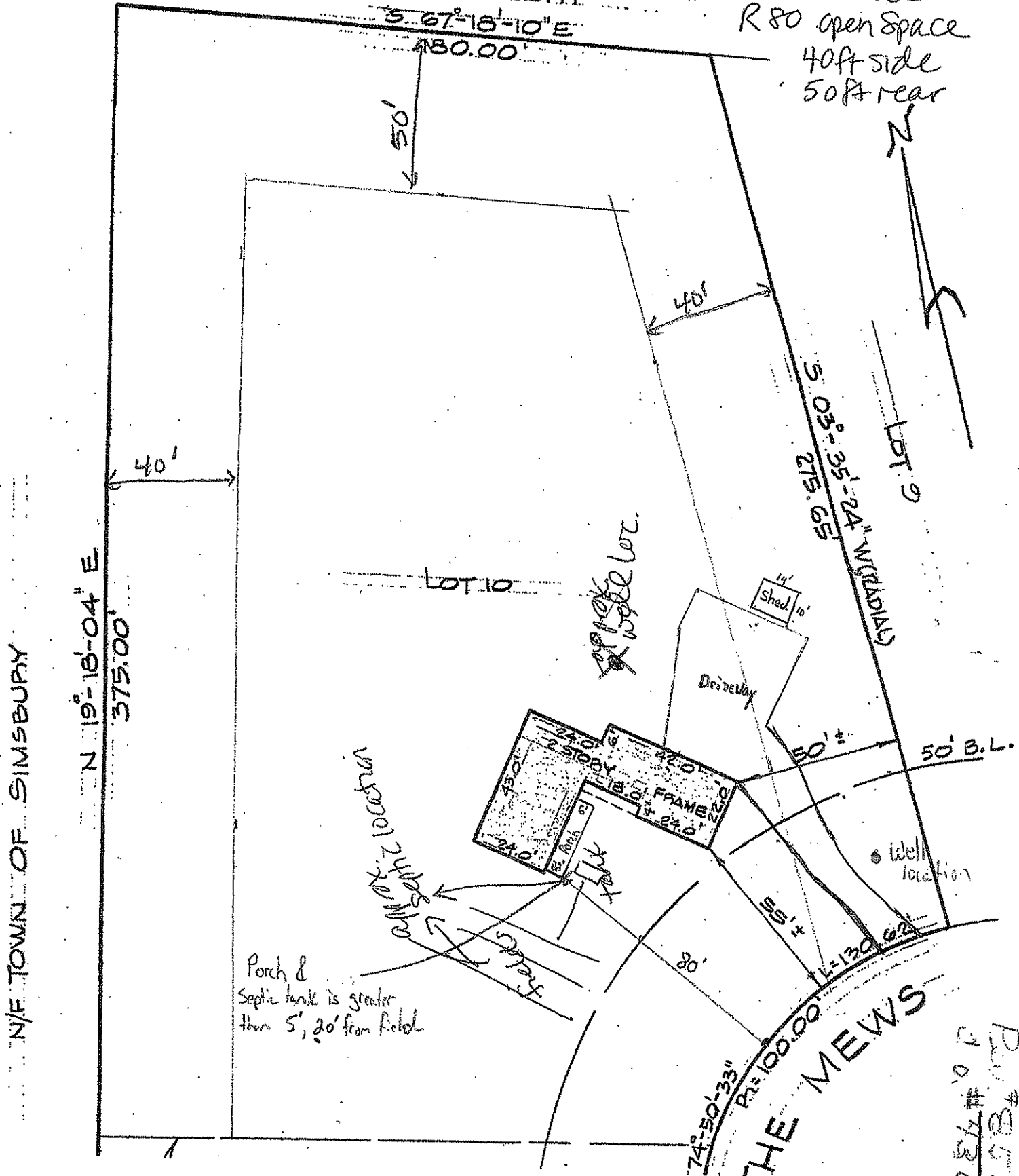
PROPERTY OF
BERGMAN BUILDING CORP.
THE MEWS
LOT 10

SIMSBURY
SCALE: 1" = 40'

CONNECTICUT
AUGUST 7, 1975

N/E TOWN OF SIMSBURY

#3 The Mews
R 80 open space
40ft side
50ft rear



Plot # 852
P.O. # 432

