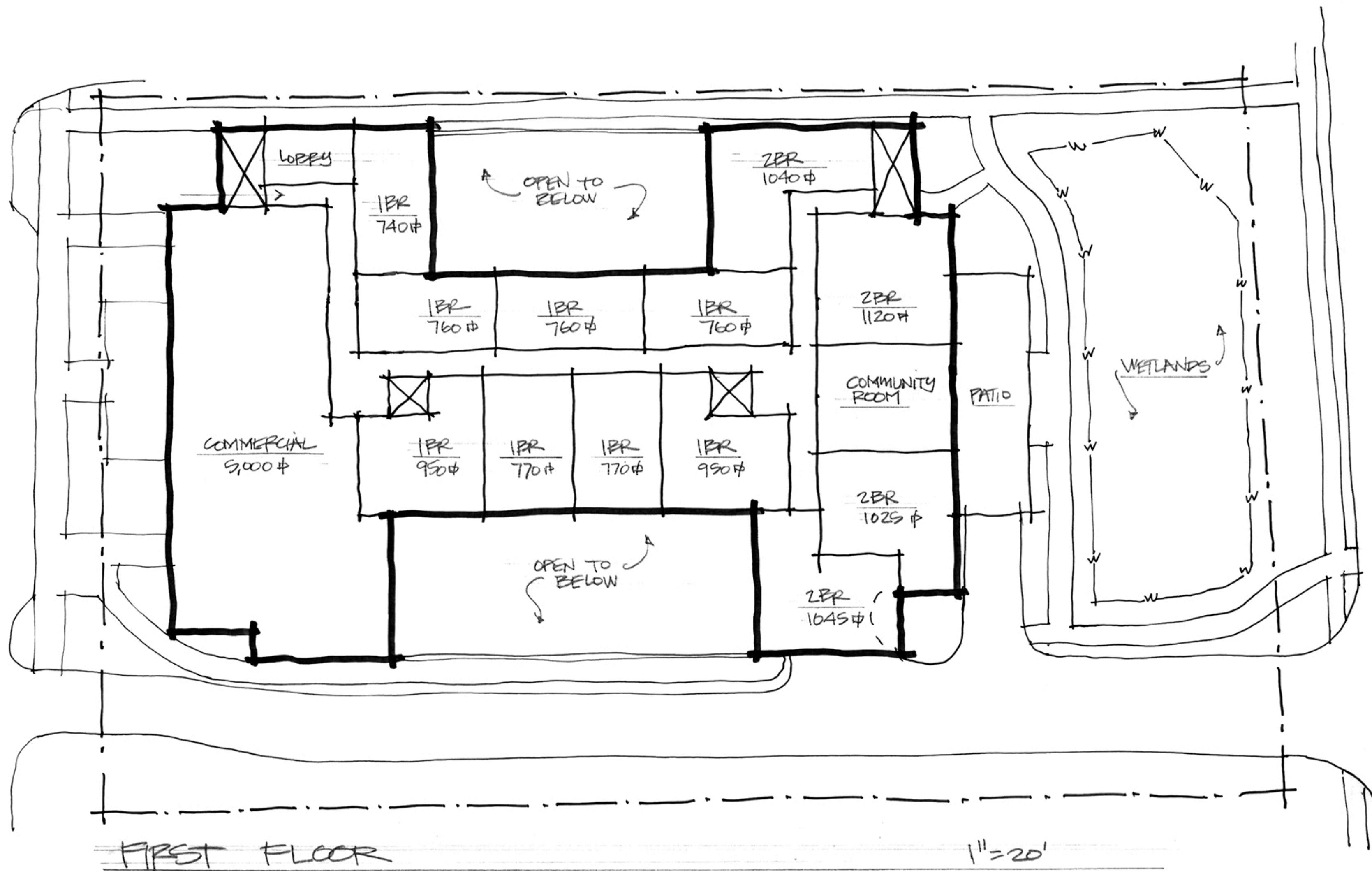
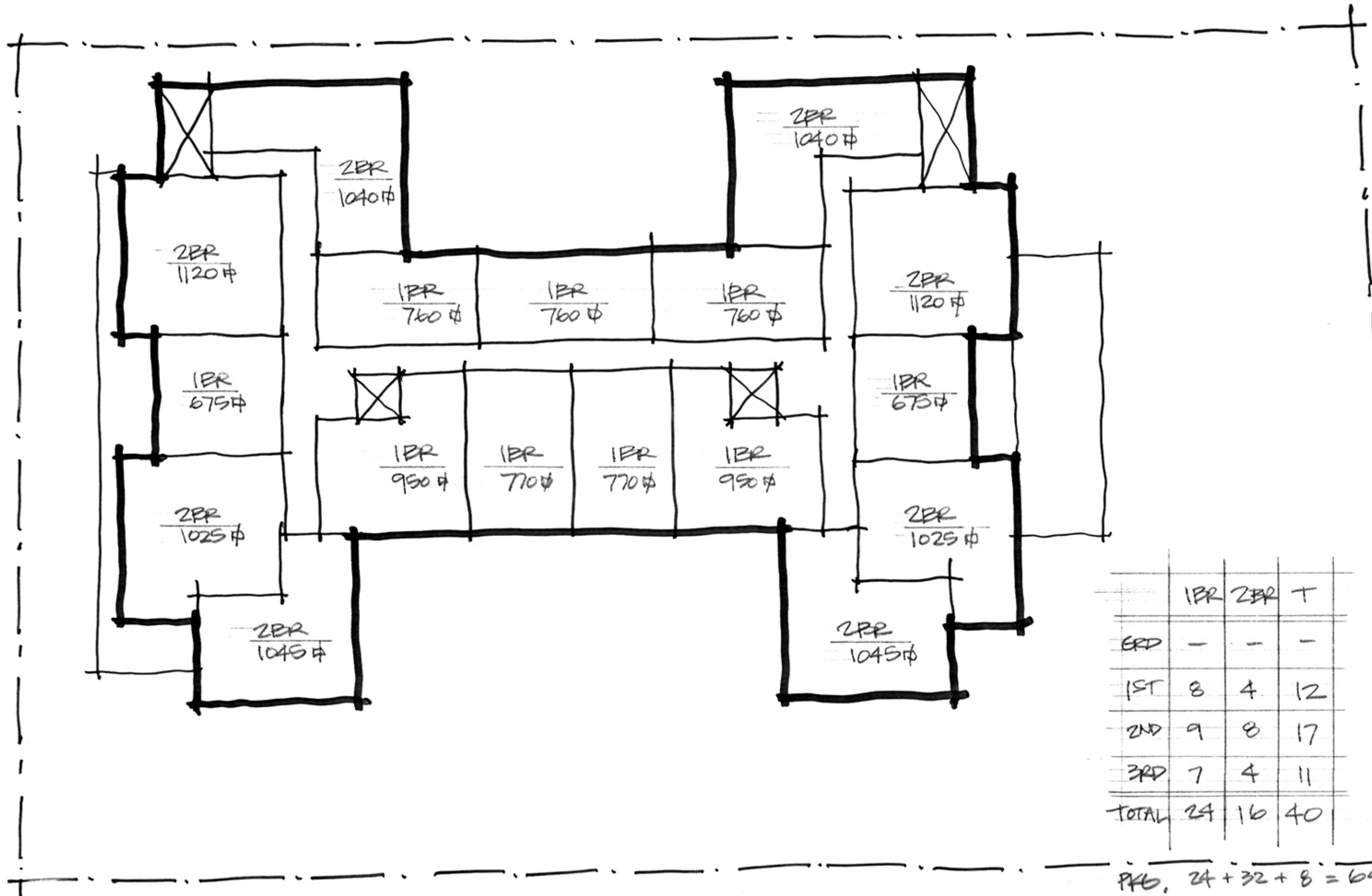


GROUND FLOOR

1/4" = 20'

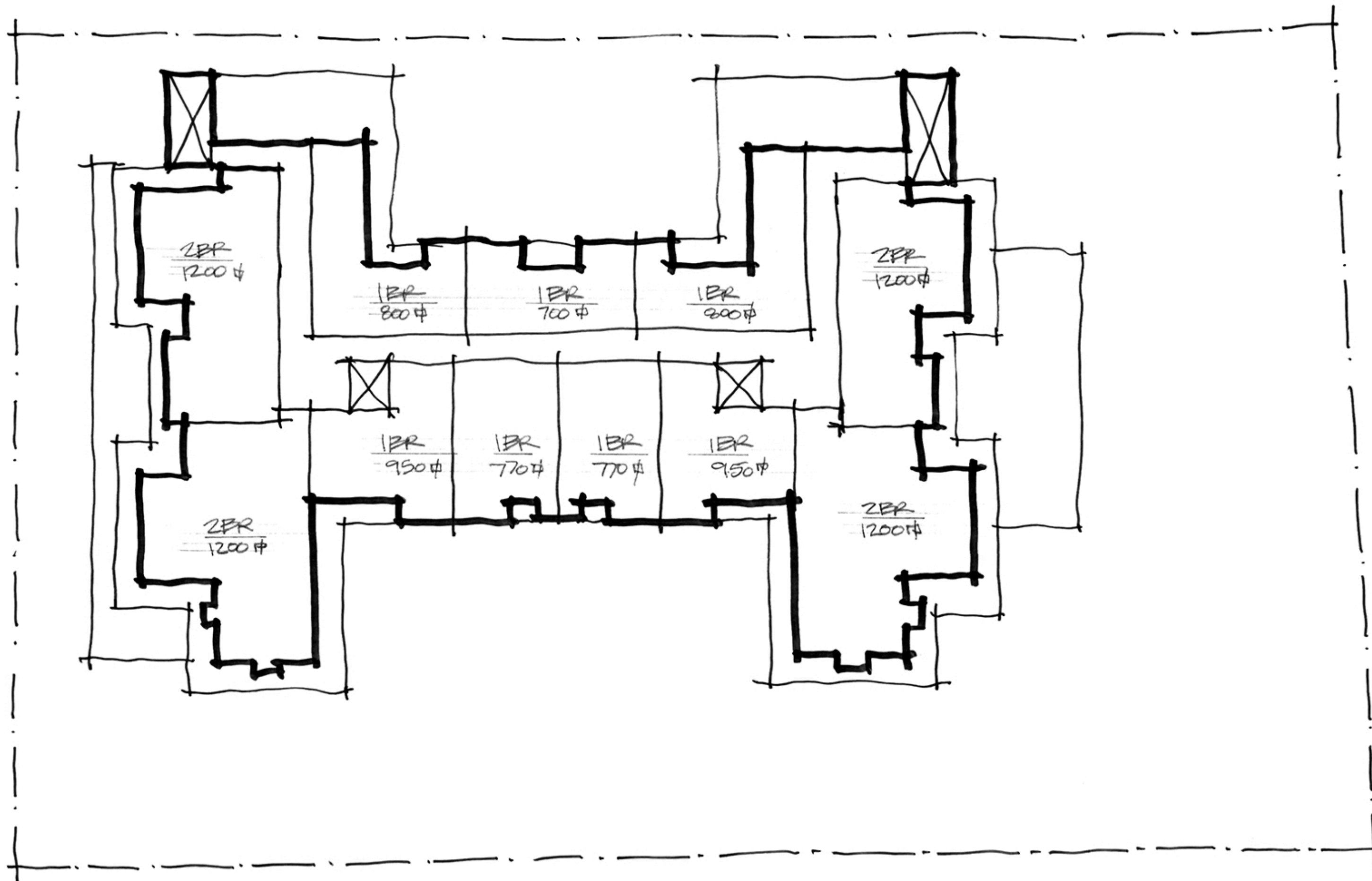




PKG, 24 + 32 + 8 = 64 REQ'D.

SECOND FLOOR

1" = 20'



THIRD FLOOR

1"=20'



HOPMEADOW ST. ELEVATION

$\frac{1}{8}'' = 1'-0''$



IRONHORSE ELEVATION

1/8" = 1'-0"

