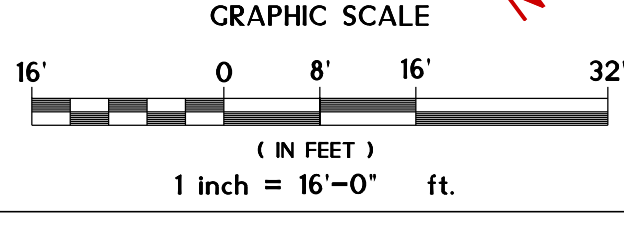
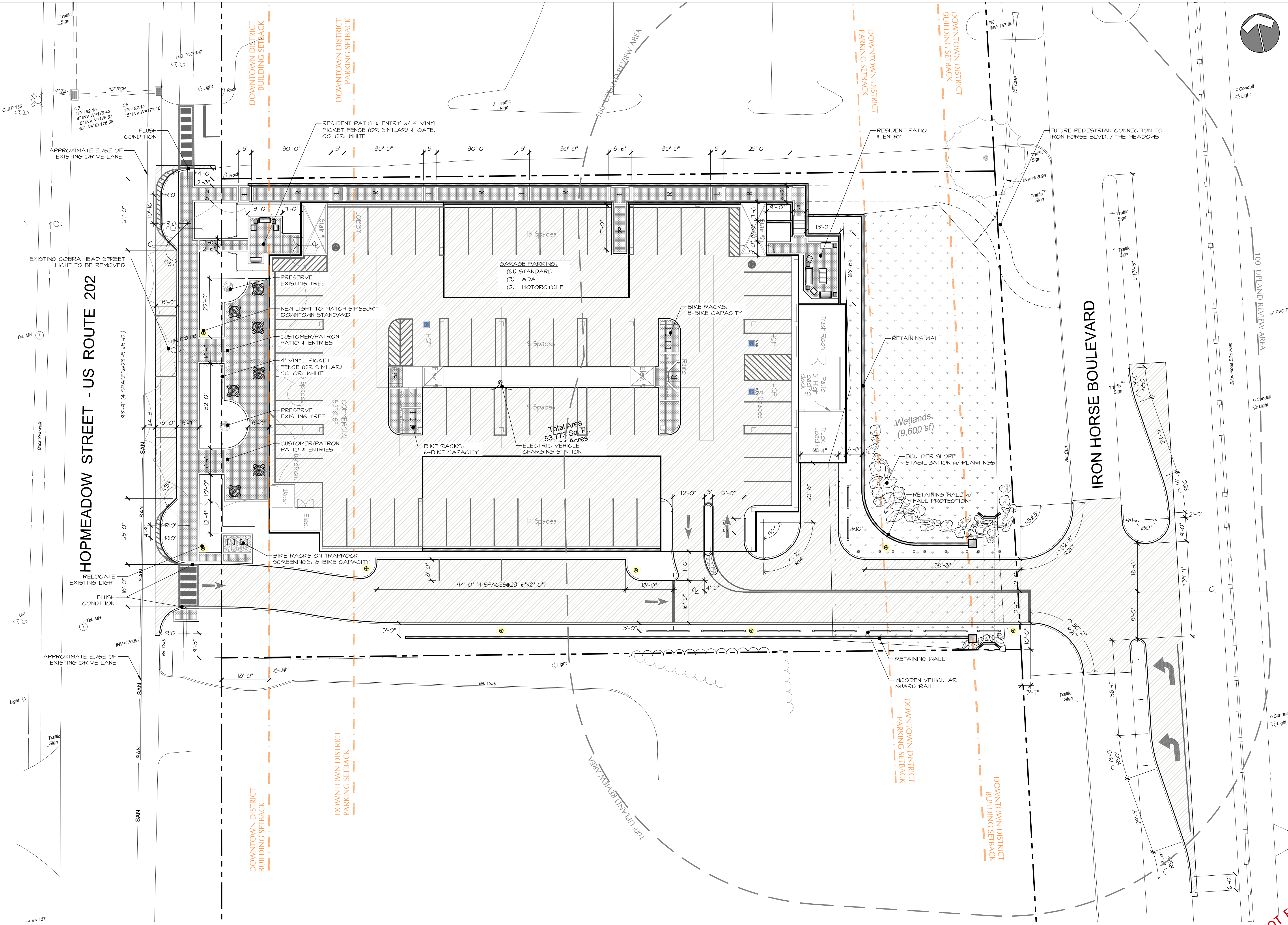


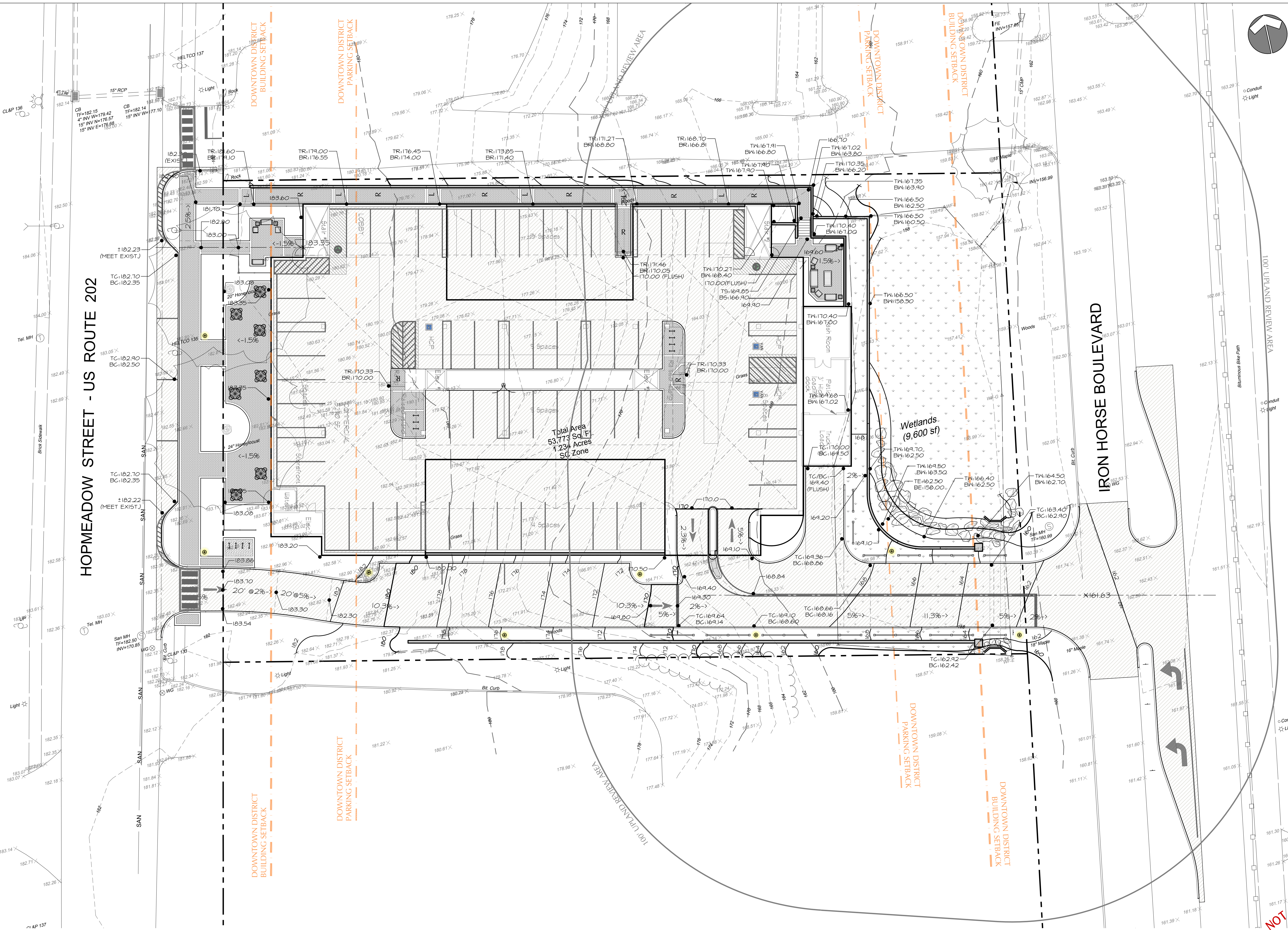
HOPMEADOW STREET - US ROUTE 202



NOT FOR CONSTRUCTION

<p>894 Hopmeadow Street SITE LAYOUT</p>	
<p>SCALE 1" = 16'-0"</p>	<p>DATE 6.22.2020</p>
<p>DRAWN BY CVR</p>	<p>APPROVED BY [Signature]</p>
<p>Property Redevelopment 894 Hopmeadow St., Simsbury, CT</p> <p>John Ritson</p>	
<p>DRAWING LL.1</p>	<p>NO. OF SHEETS</p>
<p>SHEET NO.</p>	<p>DESCRIPTION OF REVISION</p>
<p>DATE</p>	<p>DATE</p>
<p>REV.</p>	<p>APPR.</p>

CR2
At Loureiro
 LANDSCAPE ARCHITECTURE • SITE PLANNING
 100 Northwinds Drive • Plainville, Connecticut 06062
 An Employee Owned Company • www.Loureiro.com
 © Loureiro, Inc. All Rights Reserved 2019

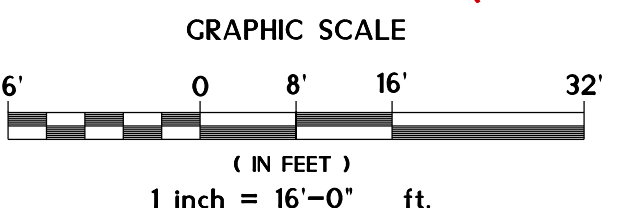


HOPMEADOW STREET - US ROUTE 202

IRON HORSE BOULEVARD

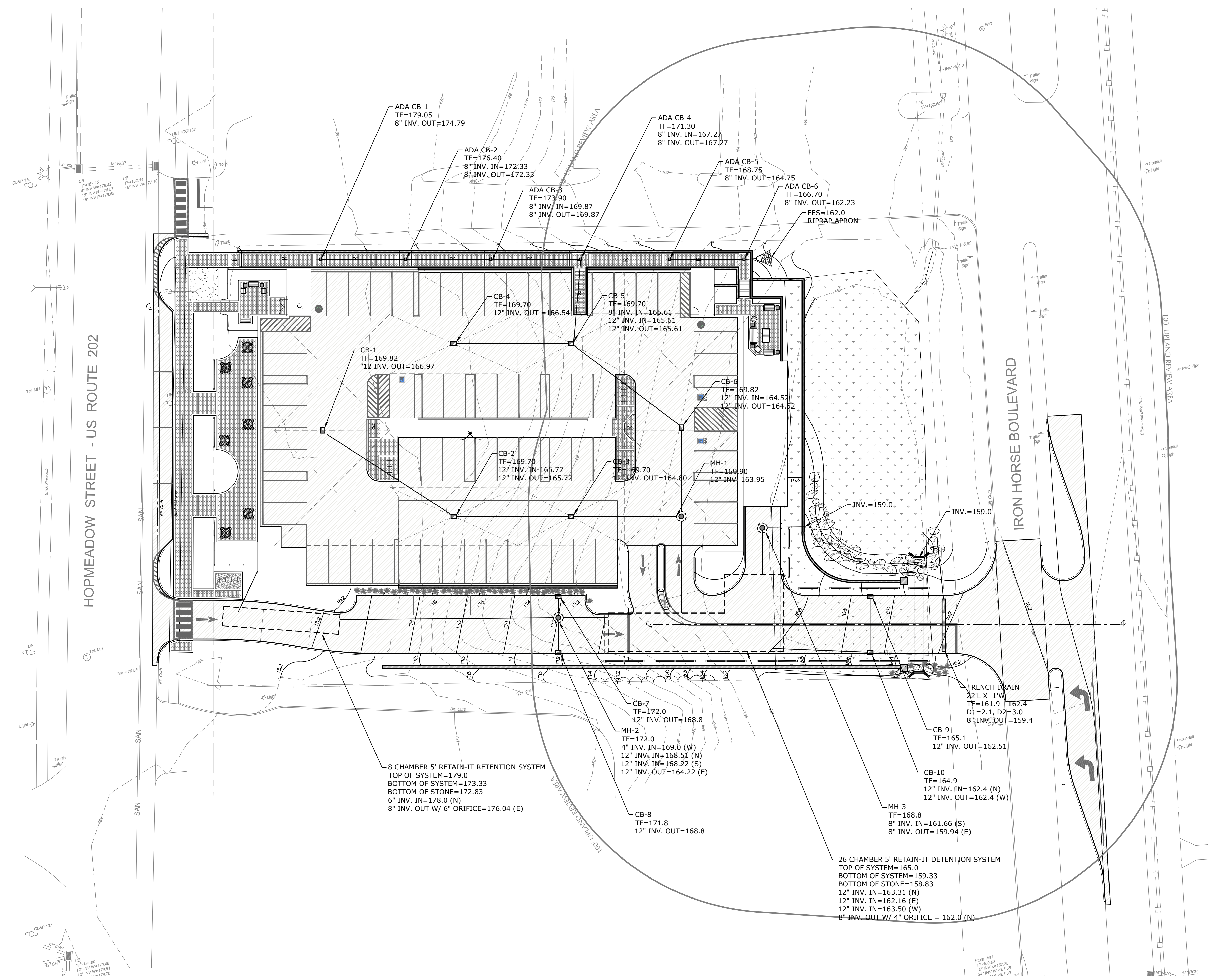
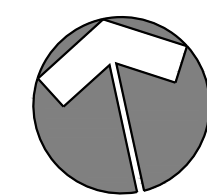
Total Area
53,773 Sq. Ft.
1.23+ Acres
SC Zone

Wetlands
(9,600 sf)



NOT FOR CONSTRUCTION

		DATE	APPR.
		DATE	DATE
SCALE 1" = 16'-0"		DRAWN BY CVR	DATE 6.22.2020
CORNER NO.			
894 Hopmeadow Street SITE GRADING		John Ritson	
Property Redevelopment 894 Hopmeadow St., Simsbury, CT		NO. OF SHEETS	
SHEET NO.		DESCRIPTION OF REVISION	



HOPMEADOW STREET - US ROUTE 202

IRON HORSE BOULEVARD

8 CHAMBER 5' RETAIN-IT RETENTION SYSTEM
 TOP OF SYSTEM=179.0
 BOTTOM OF SYSTEM=173.33
 BOTTOM OF STONE=172.83
 6" INV. IN=178.0 (N)
 8" INV. OUT W/ 6" ORIFICE=176.04 (E)

CB-7
 TF=172.0
 12" INV. OUT=168.8

MH-2
 TF=172.0
 4" INV. IN=169.0 (W)
 12" INV. IN=168.51 (N)
 12" INV. IN=168.22 (S)
 12" INV. OUT=164.22 (E)

CB-8
 TF=171.8
 12" INV. OUT=168.8

26 CHAMBER 5' RETAIN-IT DETENTION SYSTEM
 TOP OF SYSTEM=165.0
 BOTTOM OF SYSTEM=159.33
 BOTTOM OF STONE=158.83
 12" INV. IN=163.31 (N)
 12" INV. IN=162.16 (E)
 12" INV. IN=163.50 (W)
 8" INV. OUT W/ 4" ORIFICE = 162.0 (N)

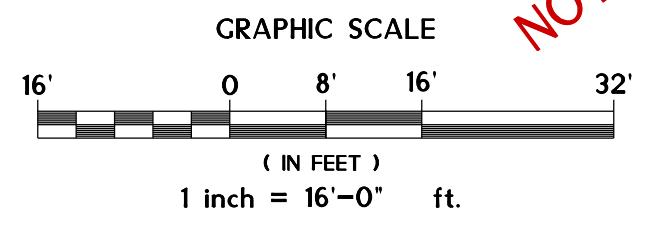
TRENCH DRAIN
 22'L X 1'W
 TF=161.9 - 162.4
 D1=2.1, D2=3.0
 8" INV. OUT=159.4

CB-9
 TF=165.1
 12" INV. OUT=162.51

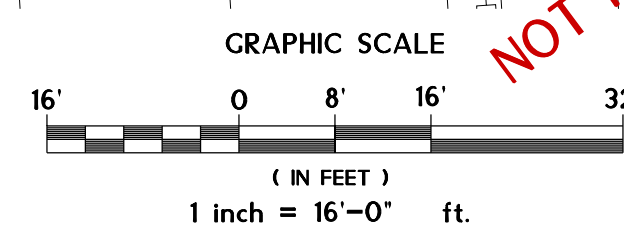
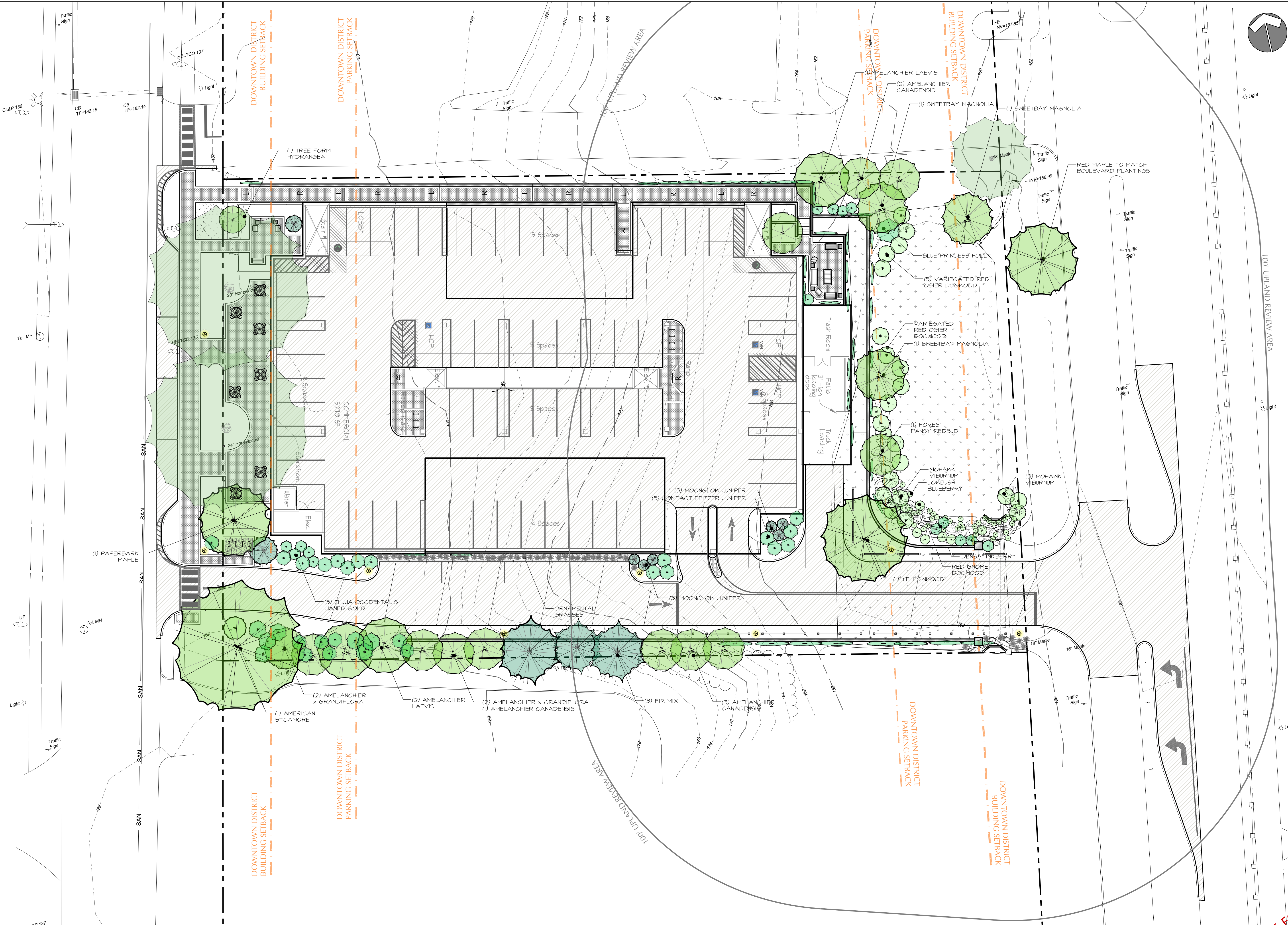
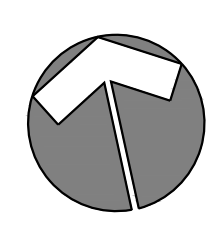
MH-3
 TF=168.8
 8" INV. IN=161.66 (S)
 8" INV. OUT=159.94 (E)

CB-10
 TF=164.9
 12" INV. IN=162.4 (N)
 12" INV. OUT=162.4 (W)

STAMP		SCALE 1" = 20'-0"	
OIGNIS Loireiro AT LANDSCAPE ARCHITECTURE - SITE PLANNING 100 Northwoods Drive • Plainville, Connecticut 06062 An Employee Owned Company • www.loireiro.com ©Loireiro, Inc. All Rights Reserved 2020.		DATE 6.22.2020	DATE
DRAWING LG.2		APPROVED BY John Ritson	DATE
SHEET NO.		NO. OF SHEETS	DESCRIPTION OF REVISION
V:\CT\SIMSIBURY\HOPMEADOW ST 894 CB DRAINAGE\894 HOPMEADOW DRAINAGE.DWG Tab: LD SITE DRAINAGE Saved: 6/22/2020 3:38 PM			



NOT FOR CONSTRUCTION



<p>894 Hopmeadow Street SITE PLANTING</p> <p>Property Redevelopment 894 Hopmeadow St., Simsbury, CT</p> <p>John Ritson</p>		<p>DATE: 6.22.2020</p> <p>DATE: 6.22.2020</p>	<p>SCALE: 1" = 16'-0"</p> <p>COMP. NO.</p>	<p>STAMP</p> <p>CR2 AT Loureiro LANDSCAPE ARCHITECTURE • SITE PLANNING</p> <p>100 Northwest Drive • Plainville, Connecticut 06062 An Employee Owned Company • www.Loureiro.com ©Loureiro Architecture, Inc. All Rights Reserved 2019</p>	<p>DESCRIPTION OF REVISION</p> <p>REV.</p> <p>DATE</p> <p>APPR.</p>
<p>LV.1</p> <p>SHEET NO. NO. OF SHEETS</p>					

NOT FOR CONSTRUCTION