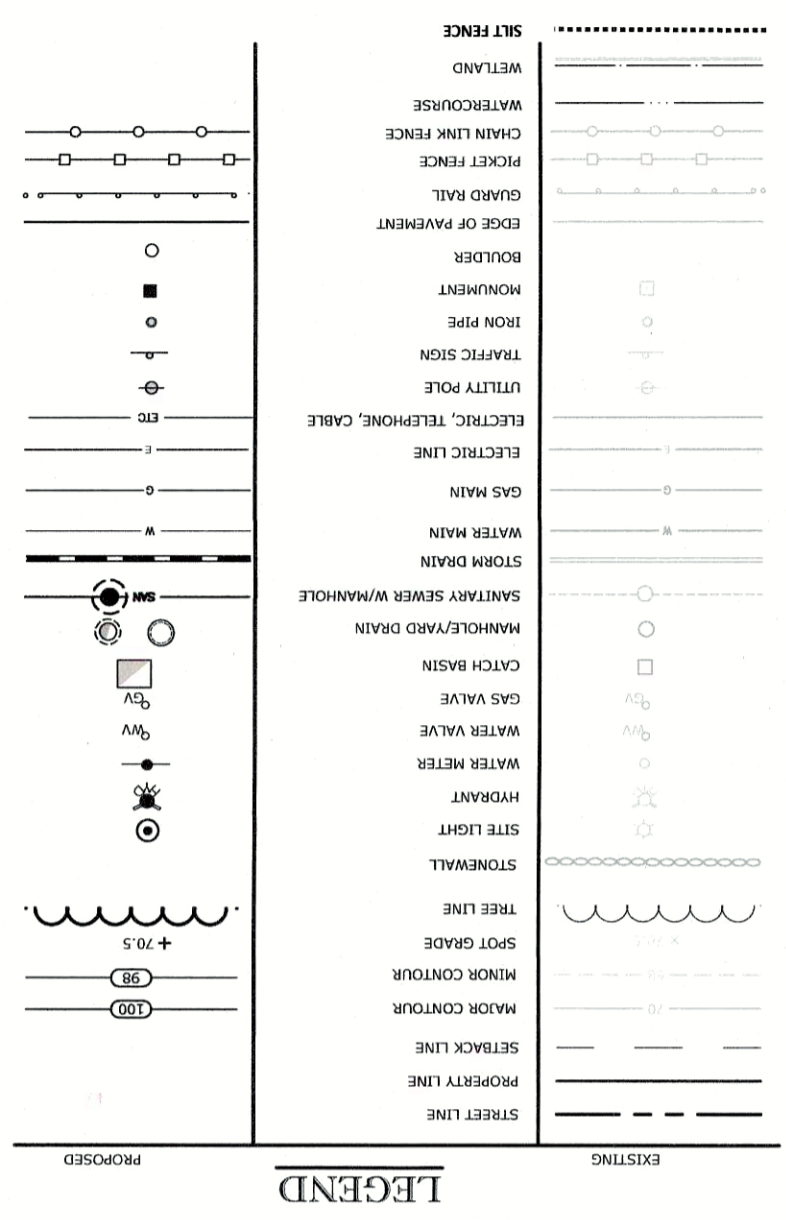
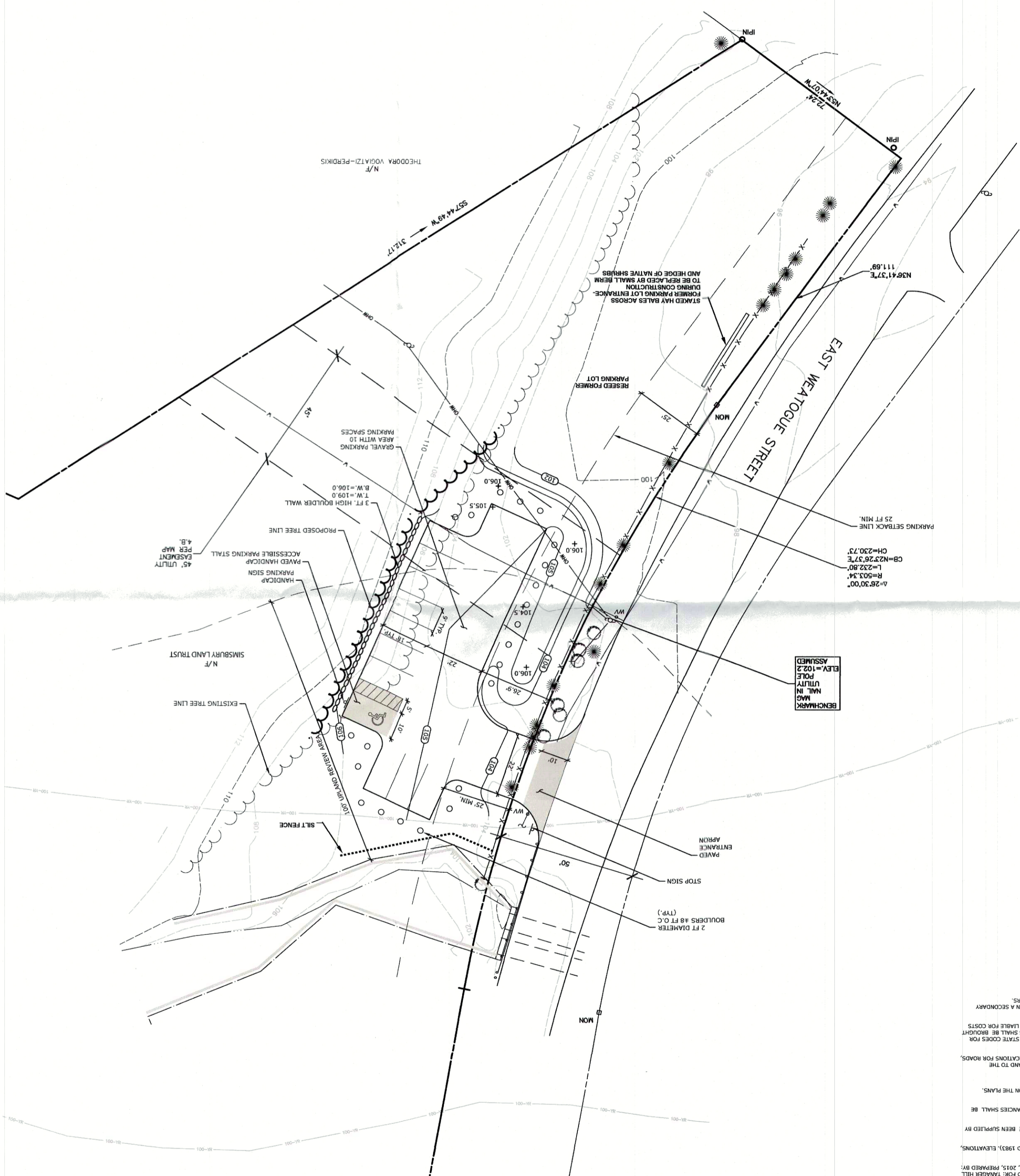
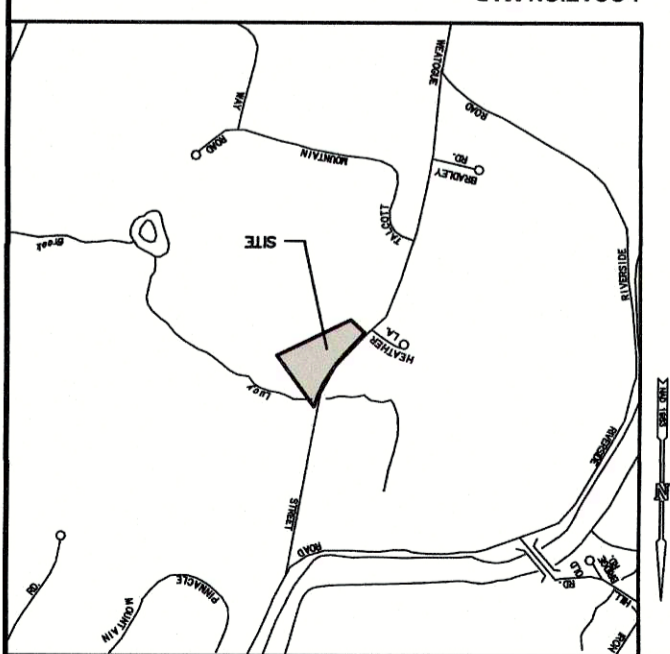


**GENERAL NOTES**

1. TOPOGRAPHY AND BOUNDARY INFORMATION BASED UPON A MAP ENTITLED "TOPOGRAPHIC SURVEY" PREPARED FOR TANGER HILL OPEN SPACE PARKING LOT, EAST WEATOGUE STREET, SIMSBURY, CONNECTICUT, SCALE: 1" = 20', DATE: JULY 27, 2015, PREPARED BY: MILONE & MACBROOM, INC.
2. NOTION, BENCHMARKS AND COORDINATES ARE BASED FROM THE CONNECTICUT COORDINATE SYSTEM (NAD 1983); ELEVATIONS, CONTOURS AND BENCH MARK ARE BASED UPON (NAD 1983).
3. MILONE & MACBROOM INC. ACCEPTS NO RESPONSIBILITY FOR THE ACCURACY OF MAPS AND DATA WHICH HAVE BEEN SUPPLIED BY OTHERS.
4. ALL DIMENSIONS AND ELEVATIONS SHALL BE VERIFIED IN THE FIELD PRIOR TO CONSTRUCTION. ANY DISCREPANCIES SHALL BE BROUGHT TO THE ATTENTION OF THE ENGINEER.
5. ALL DISTURBED AREAS SHALL RECEIVE A MINIMUM OF 6" TOPSOIL, AND BE SEEDED WITH GRASS, AS SHOWN ON THE PLANS.
6. ALL PROPOSED CONTOURS AND SPOT ELEVATIONS INDICATE FINISHED GRADE.
7. ALL CONSTRUCTION MATERIALS AND METHODS SHALL CONFORM TO THE TOWN OF SIMSBURY REQUIREMENTS AND TO THE APPLICABLE SECTIONS OF THE STATE OF CONNECTICUT DEPARTMENT OF TRANSPORTATION STANDARD SPECIFICATIONS FOR ROADS, BRIDGES, AND INCIDENTAL CONSTRUCTION, FROM 1991 816 AND ADDENDUMS.
8. THE PLANS REQUIRE A CONSTRUCTOR'S WORKING KNOWLEDGE OF LOCAL, MUNICIPAL, WATER AUTHORITY, AND STATE CODES FOR UTILITY SYSTEMS. ANY CONFLICTS BETWEEN MATERIALS AND LOCATIONS SHOWN, AND LOCAL REQUIREMENTS SHALL BE BROUGHT TO THE ATTENTION OF THE ENGINEER PRIOR TO THE BEGINNING OF WORK. THE ENGINEER WILL NOT BE HELD LIABLE FOR COSTS INCURRED TO IMPLEMENT OR CORRECT WORK WHICH DOES NOT CONFORM TO LOCAL CODES.
9. ALL FUEL, OIL, PAINT, OR OTHER HAZARDOUS MATERIALS USED DURING CONSTRUCTION SHOULD BE STORED IN A SECONDARY CONTAINER AND REMOVED TO A LOCKED INDOOR AREA WITH AN IMPROVED FLOOR DURING NON-WORK HOURS.



**LEGEND**



SCALE: 1"=1000'  
LOCATION MAP

PROJECT NO. 4398-02  
DATE: OCTOBER 30, 2015  
SCALE: 1"=20'

DESIGNED BY: KMT  
CHECKED BY: TD  
CONCEPTUAL SITE PLAN  
TANGER OPEN SPACE PARKING LOT  
EAST WEATOGUE STREET  
SIMSBURY, CONNECTICUT

DESCRIPTION	DATE	BY

**MILONE & MACBROOM**  
99 Kealey Drive  
Cheshire, Connecticut 06410  
(860) 271-7173 Fax: (860) 272-9733  
WWW.MILONEANDMACBROOM.COM

