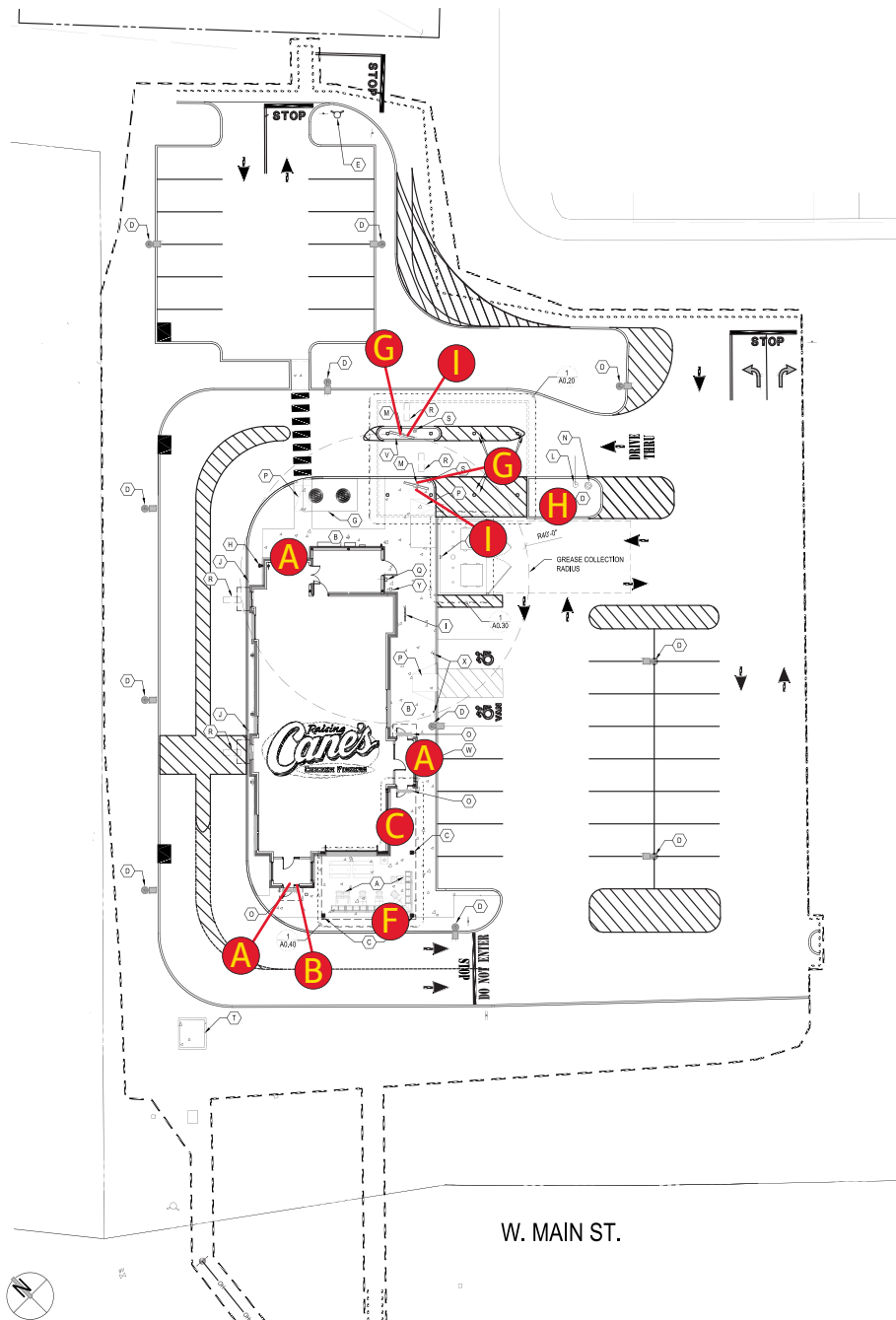




530 Bushy Hill Road/RC0935
 Simsbury, CT 06070
 02/27/2024

DRAWING REVISIONS	
DATE	CHANGE
5/9/23	Updated elevations
6/8/23	Updated elevations & OLH details
9/29/23	Updated siteplan & elevations
12/18/23	Updated signage with new engineering, address, & notes
12/22/23	Added night views
1/5/24	Edited night views
2/7/24	Edited night views
2/27/24	Edited night views

SITEMAP



QTY.	CODE	DESCRIPTION
A	3	WS-8FT 4x8 Wall Sign (Halo Lit)
B	1	ONS Open Sign
C	1	CFNS Chicken Fingers Neon Sign
Items D through F removed from project based upon ZBA Hearing results on 2/28/24		
D	1	ONS Open Sign by Letters (Uplit)
G	2	DTMB DT Menuboard
H	1	DTPS Pre Sell Board
I	2	DTSP Speaker Post

	YES	NO
RED DOG	<input type="checkbox"/>	<input checked="" type="checkbox"/>
MURAL	<input type="checkbox"/>	<input checked="" type="checkbox"/>
FLAGS	<input type="checkbox"/>	<input checked="" type="checkbox"/>
OLH	<input type="checkbox"/>	<input checked="" type="checkbox"/>

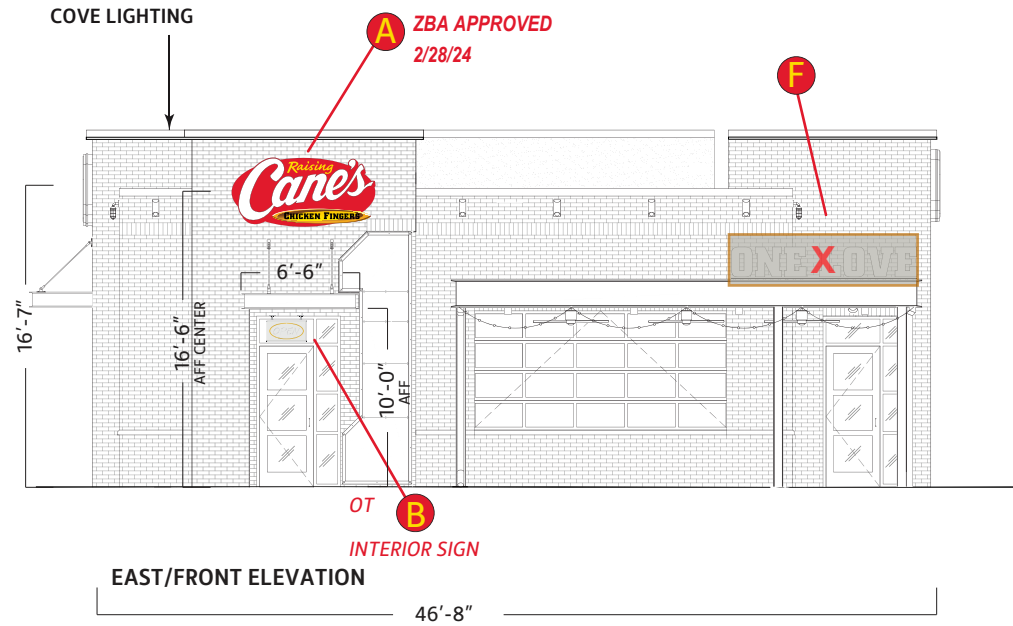


Location: Simsbury, CT
Site ID: RC0935

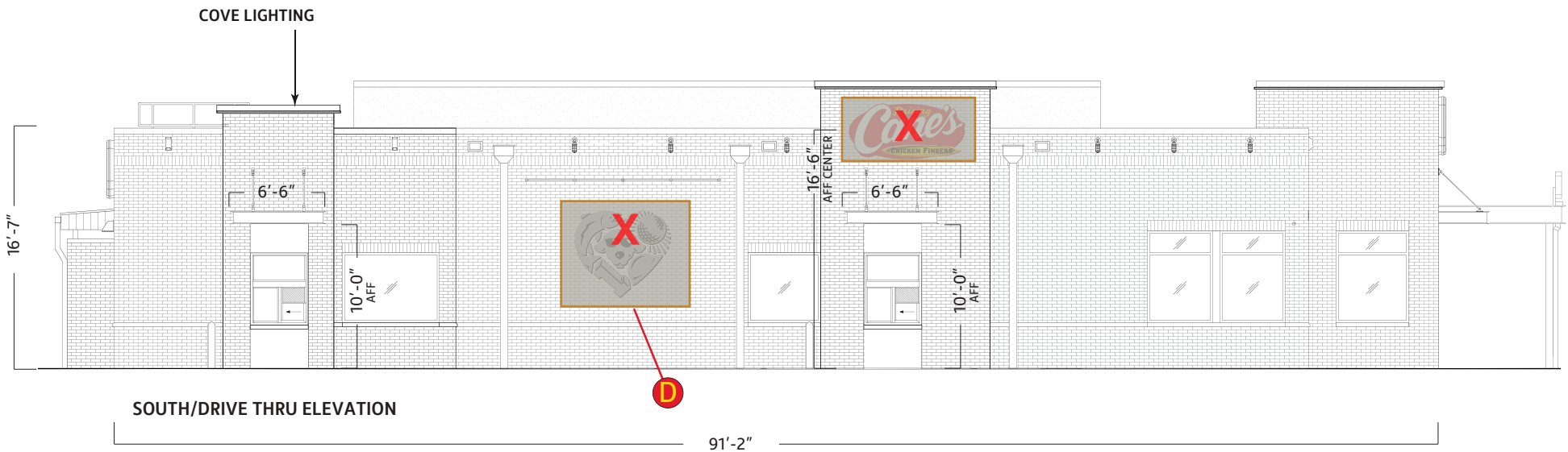
Date: 02/19/2022
AGI PM: Scott Rogers

This document is the sole property of AGI, and all design, manufacturing, reproduction, use and sale rights regarding the same are expressly forbidden. It is submitted under a confidential relationship, for a special purpose, and the recipient, by accepting this document assumes custody and agrees that this document will not be copied or reproduced in whole or in part, nor its contents revealed in any manner or to any person except for the purpose for which it was tendered, nor any special features peculiar to this design be incorporated in other projects.

ELEVATIONS



	QTY.	CODE	DESCRIPTION
A	3	WS-8FT	4x8 Wall Sign (Halo Lit)
B	1	ONS	Open Sign
C	1	CFNS	Chicken Fingers Neon Sign
Items D through F removed from project based upon ZBA Hearing results on 2/28/24			
D	1	DTMB	DT Menuboard
G	2	DTMB	DT Menuboard
H	1	DTPS	Pre Sell Board
I	2	DTSP	Speaker Post



Scale: 3/32"=1'



Location: Simsbury, CT

Date: 02/19/2022

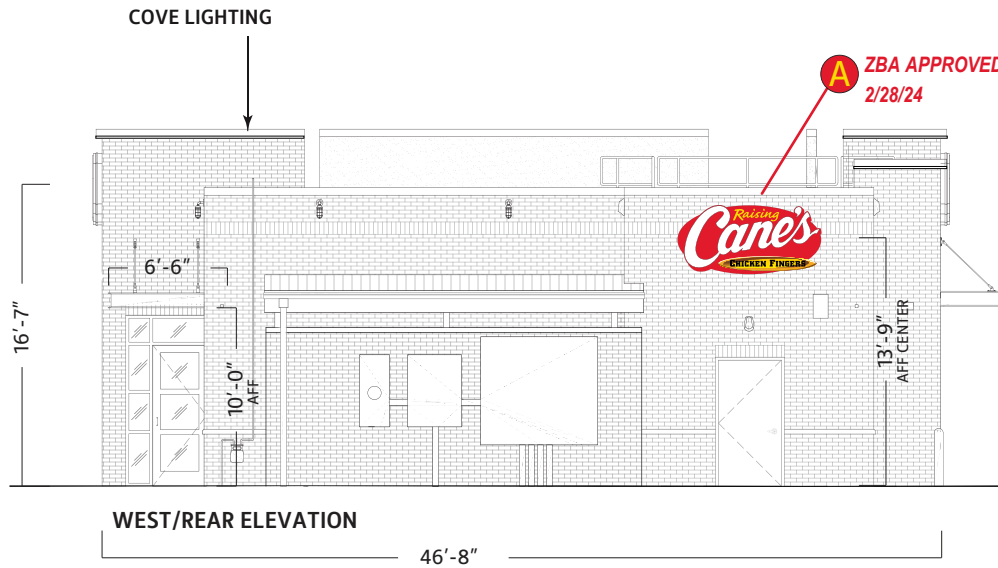
Site ID: RC0935

AGI PM: Scott Rogers

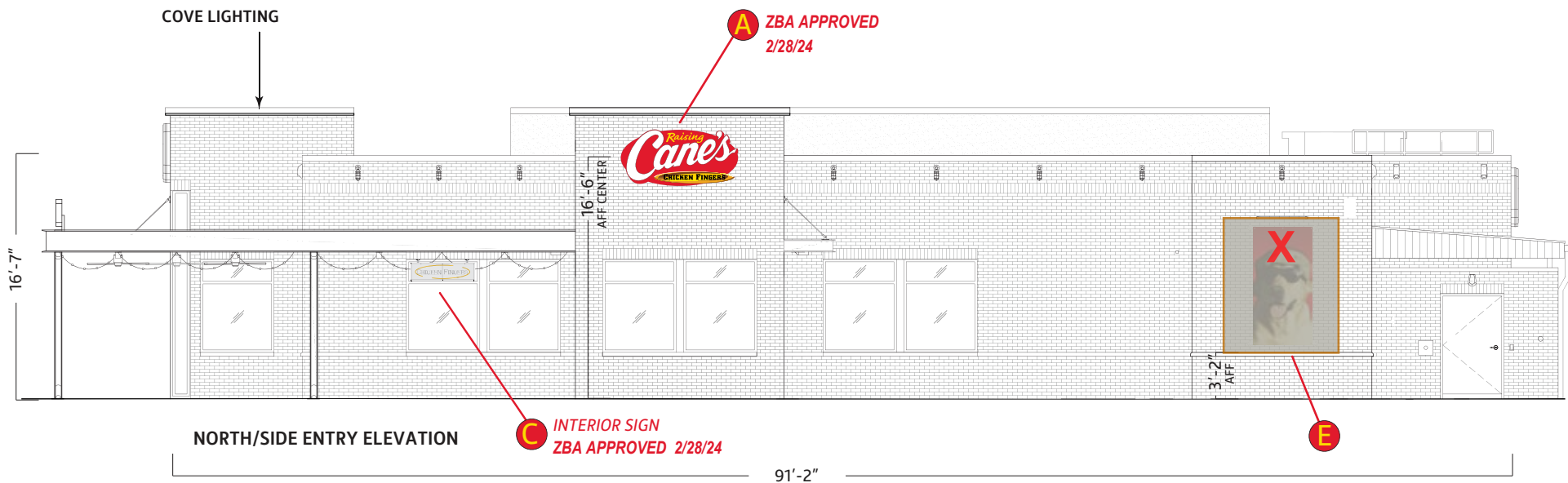
This document is the sole property of AGI, and all design, manufacturing, reproduction, use and sale rights regarding the same are expressly forbidden. It is submitted under a confidential relationship, for a special purpose, and the recipient, by accepting this document assumes custody and agrees that this document will not be copied or reproduced in whole or in part, nor its contents revealed in any manner or to any person except for the purpose for which it was tendered, nor any special features peculiar to this design be incorporated in other projects.



ELEVATIONS



	QTY.	CODE	DESCRIPTION
A	3	WS-8FT	4x8 Wall Sign (Halo Lit)
B	1	ONS	Open Sign
C	1	CFNS	Chicken Fingers Neon Sign
Items D through F removed from project based upon ZBA Hearing results on 2/28/24			
F	1		Signage by Letters (Uplit)
G	2	DTMB	DT Menuboard
H	1	DTPS	Pre Sell Board
I	2	DTSP	Speaker Post



Scale: 3/32"=1'



Location: Simsbury, CT

Date: 02/19/2022

Site ID: RC0935

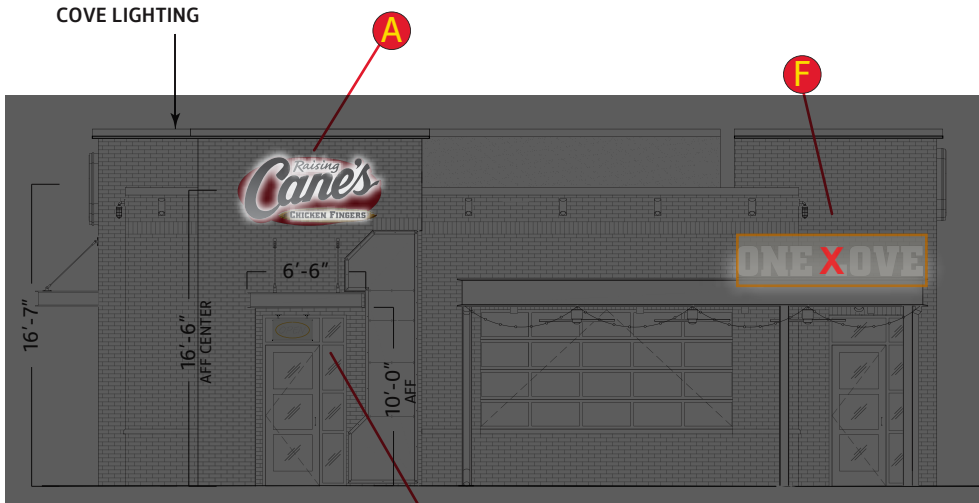
AGI PM: Scott Rogers

This document is the sole property of AGI, and all design, manufacturing, reproduction, use and sale rights regarding the same are expressly forbidden. It is submitted under a confidential relationship, for a special purpose, and the recipient, by accepting this document assumes custody and agrees that this document will not be copied or reproduced in whole or in part, nor its contents revealed in any manner or to any person except for the purpose for which it was tendered, nor any special features peculiar to this design be incorporated in other projects.



ELEVATIONS (NIGHT VIEWS)

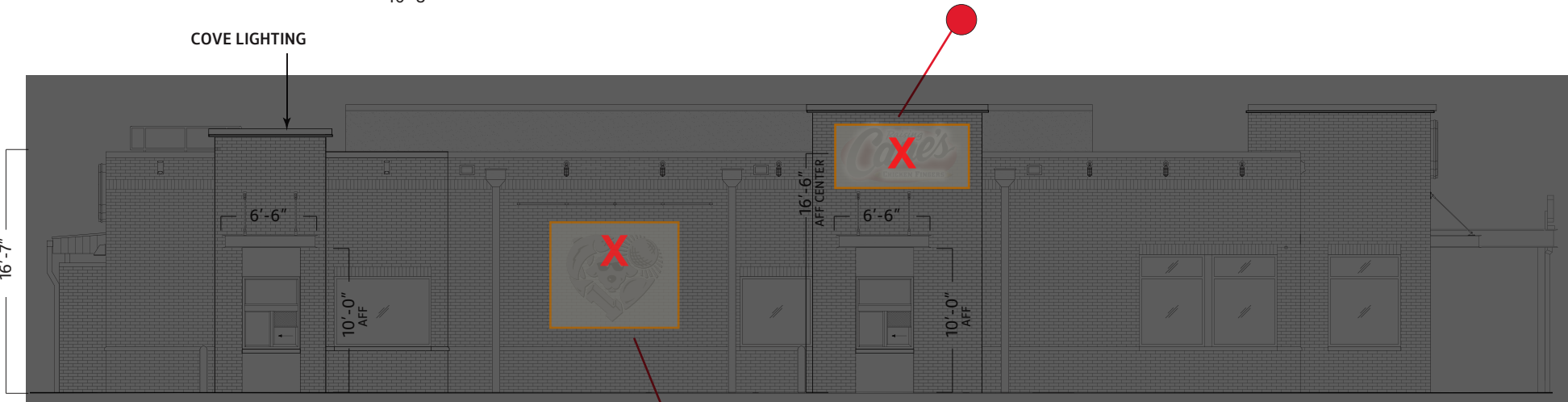
	QTY.	CODE	DESCRIPTION
A	3	WS-8FT	4x8 Wall Sign (Halo Lit)
B	1	ONS	Open Sign
C	1	CFNS	Chicken Fingers Neon Sign
Items D through F removed from project based upon ZBA Hearing results on 2/28/24			
F	1	ONS	Open Sign
G	2	DTMB	DT Menuboard
H	1	DTPS	Pre Sell Board
I	2	DTSP	Speaker Post



EAST/FRONT ELEVATION

B INTERIOR SIGN

46'-8"



SOUTH/DRIVE THRU ELEVATION

D

91'-2"

Scale: 3/32"=1'

AMBIENT LIGHTING VARIES BY LOCATION. THIS ARTISTIC REPRESENTATION MAY NOT MATCH ACTUAL.



Location: Simsbury, CT

Date: 02/19/2022

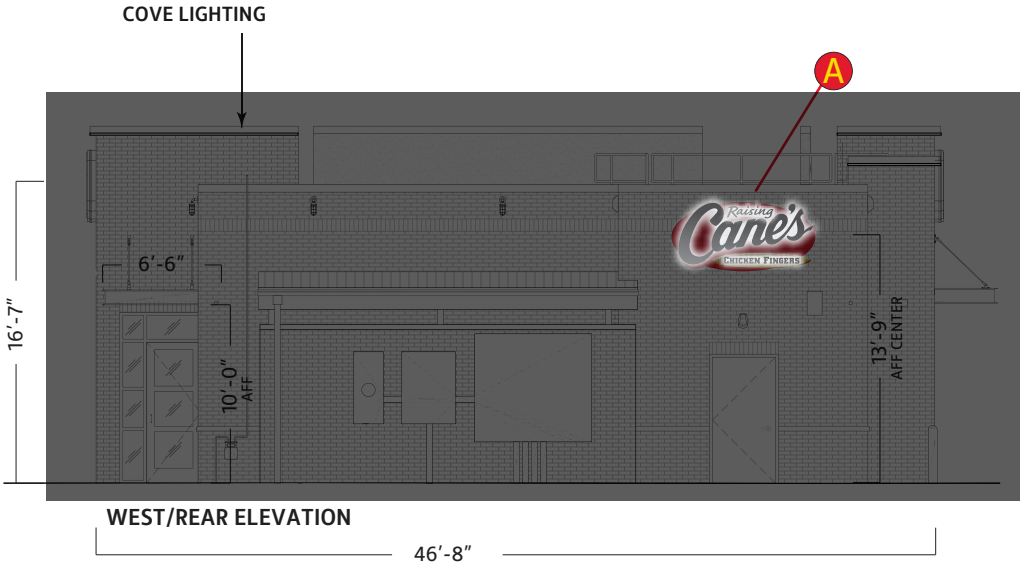
Site ID: RC0935

AGI PM: Scott Rogers

This document is the sole property of AGI, and all design, manufacturing, reproduction, use and sale rights regarding the same are expressly forbidden. It is submitted under a confidential relationship, for a special purpose, and the recipient, by accepting this document assumes custody and agrees that this document will not be copied or reproduced in whole or in part, nor its contents revealed in any manner or to any person except for the purpose for which it was tendered, nor any special features peculiar to this design be incorporated in other projects.

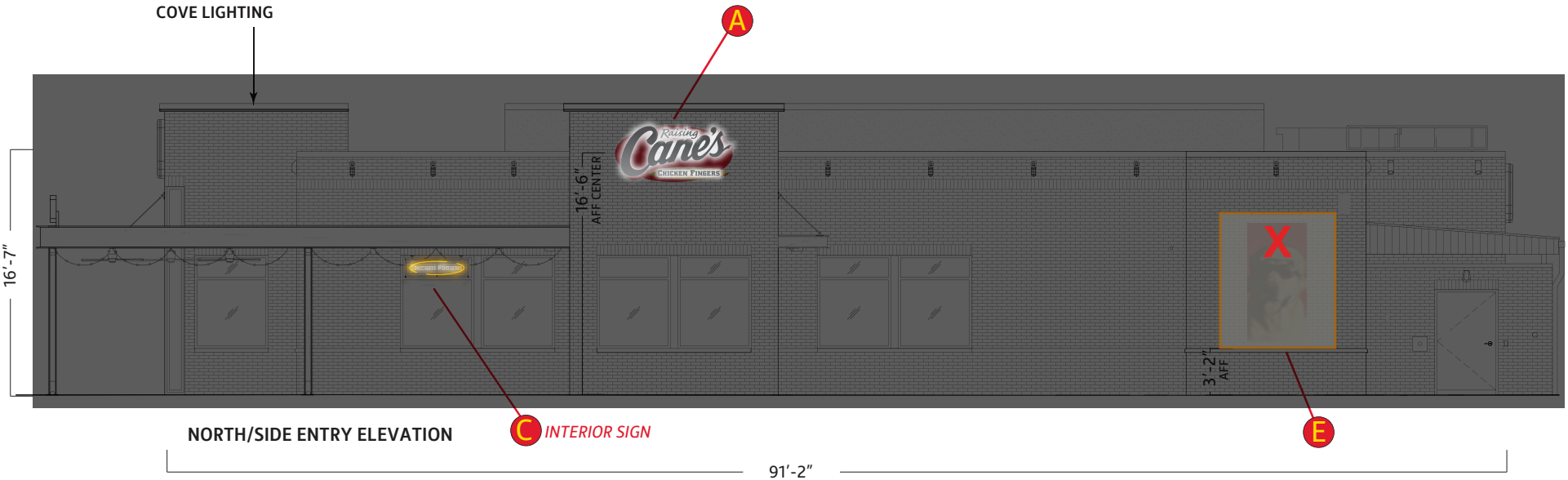


ELEVATIONS (NIGHT VIEWS)



	QTY.	CODE	DESCRIPTION
A	3	WS-8FT	4x8 Wall Sign (Halo Lit)
B	1	ONS	Open Sign
C	1	CFNS	Chicken Fingers Neon Sign
D	1	DTMB	DT Menuboard
E	1	DTPS	Pre Sell Board
F	2	DTSP	Speaker Post

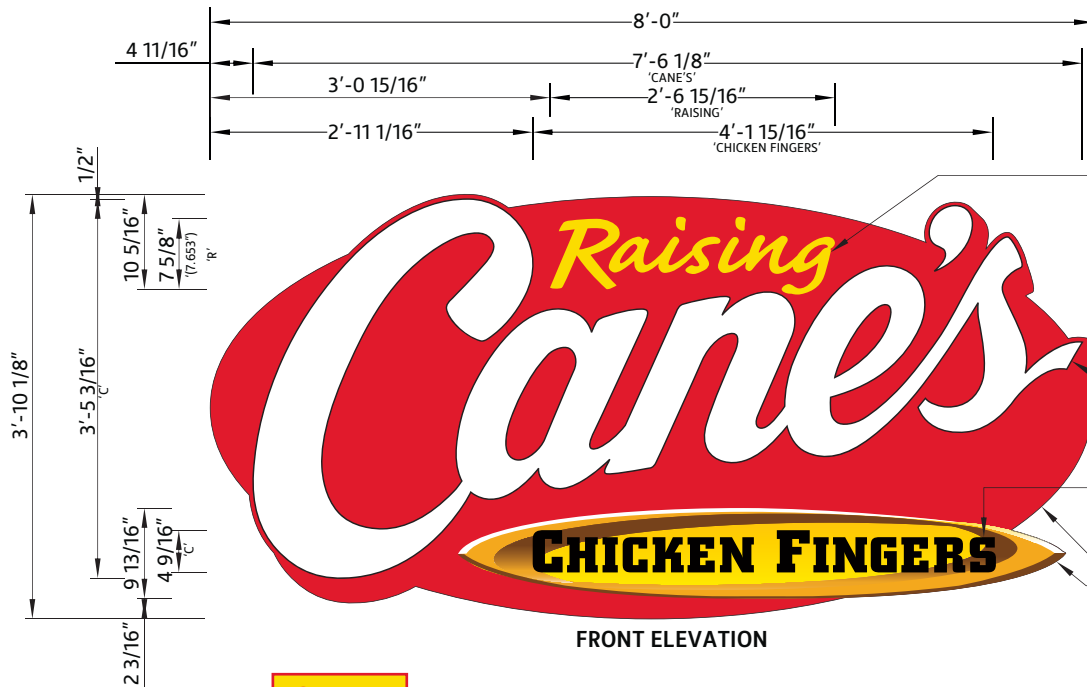
Items D through F removed from project based upon ZBA Hearing results on 2/28/24



Scale: 3/32"=1'

AMBIENT LIGHTING VARIES BY LOCATION. THIS ARTISTIC REPRESENTATION MAY NOT MATCH ACTUAL.

	Location: Simsbury, CT	Date: 02/19/2022	<p>This document is the sole property of AGI, and all design, manufacturing, reproduction, use and sale rights regarding the same are expressly forbidden. It is submitted under a confidential relationship, for a special purpose, and the recipient, by accepting this document assumes custody and agrees that this document will not be copied or reproduced in whole or in part, nor its contents revealed in any manner or to any person except for the purpose for which it was tendered, nor any special features peculiar to this design be incorporated in other projects.</p>	PAGE 10
	Site ID: RC0935	AGI PM: Scott Rogers		



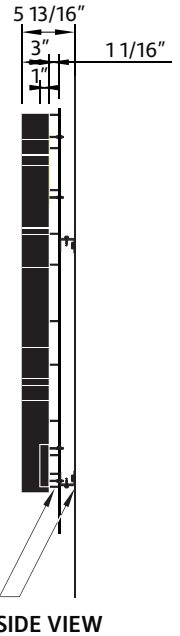
'RAISING' IS 1" PVC HALO ILLUMINATED LETTER **PAINTED TO MATCH TO MATCH 3M #3630-015 'YELLOW'**
 -RETURNS **PAINTED TO FACE**

FABRICATED HALO ILLUMINATED 'CANE'S' LETTERS ARE **PAINTED MAP 'WHITE'**
 -RETURNS **PAINTED 'BLACK'**

'CHICKEN FINGERS' IS 1" PVC HALO ILLUMINATED LETTER **PAINTED MAP 'BLACK'**
 -RETURNS **PAINTED 'BLACK'**

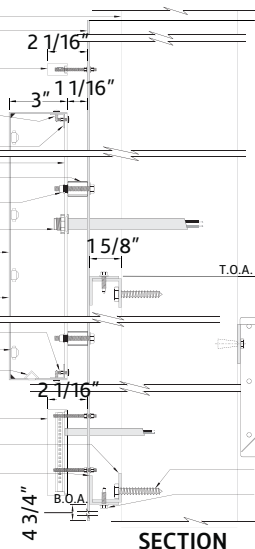
1/8" ALUM. BACKER PANEL IS **PAINTED MP 2075 'RED'**
 -SURFBOARD GRAPHIC IS **SURFACE APPLIED FULL COLOR DIGITAL PRINT**

ALUM. STANDOFFS & ALUM. ANGLES ARE **PAINTED MAP 'BLACK'**



24.14
 Sign Area

- EXISTING WALL
- 1/8" ALUM. BACKER PANEL
- 'RAISING' PVC LETTER - SEE DETAIL
- #8 S.S.P.H. SHEET METAL SCREW
- 3/4" X 3/4" X .063" ALUM. ANGLE CLIP
- PAINT W/ WHITE LIGHT ENHANCING PAINT
- 1/8" CLEAR ACRYLIC LENS
- 3/4" Ø X .065" ALUM. TUBE SPACER
- 1/4" - 20 BOLT W/ RIVET NUT
- 9/16" WALL BUSTER CONDUIT & COMPRESSION FITTING
- 'CANE'S' FAB. HALO LETTER
- TYPICAL FABRICATED ALUM. LETTER:
- FACE - .090" ALUM., -RETURN - .063" ALUM., -INSIDE TO BE **PAINTED W/ WHITE LIGHT ENHANCING PAINT**
- #8 S.S.P.H. MACHINE SCREW W/ NUT
- LED MODULE - REFER TO LAYOUT
- 1/4" Ø WEEP HOLE W/ LIGHT SHIELD AS REQ'D.
- 'CHICKEN FINGERS' PVC LETTER - SEE DETAIL
- 1 1/2" X 1 1/2" X 1/8" ALUM. MTG ANGLE
- 1 1/2" X 1 1/2" X 1/8" ALUM. ANGLE
- VERSILOKED TO ALUM. BACKER PANEL



- TRANSFORMER BOX
- TO HOUSE LED POWER SUPPLY
- DISCONNECT SWITCH
- 1/2" X 6' LONG FLEXIBLE LIQUID TITE CONDUIT WHIP
- TO OWNER PROVIDED POWER SUPPLY
- 3/8" Ø MOUNTING HARDWARE AS REQ'D - SEE CHART
- #12 HEX HEAD SELF DRILLING SCREW



NIGHT VIEW



Location: Simsbury, CT

Date: 02/19/2022

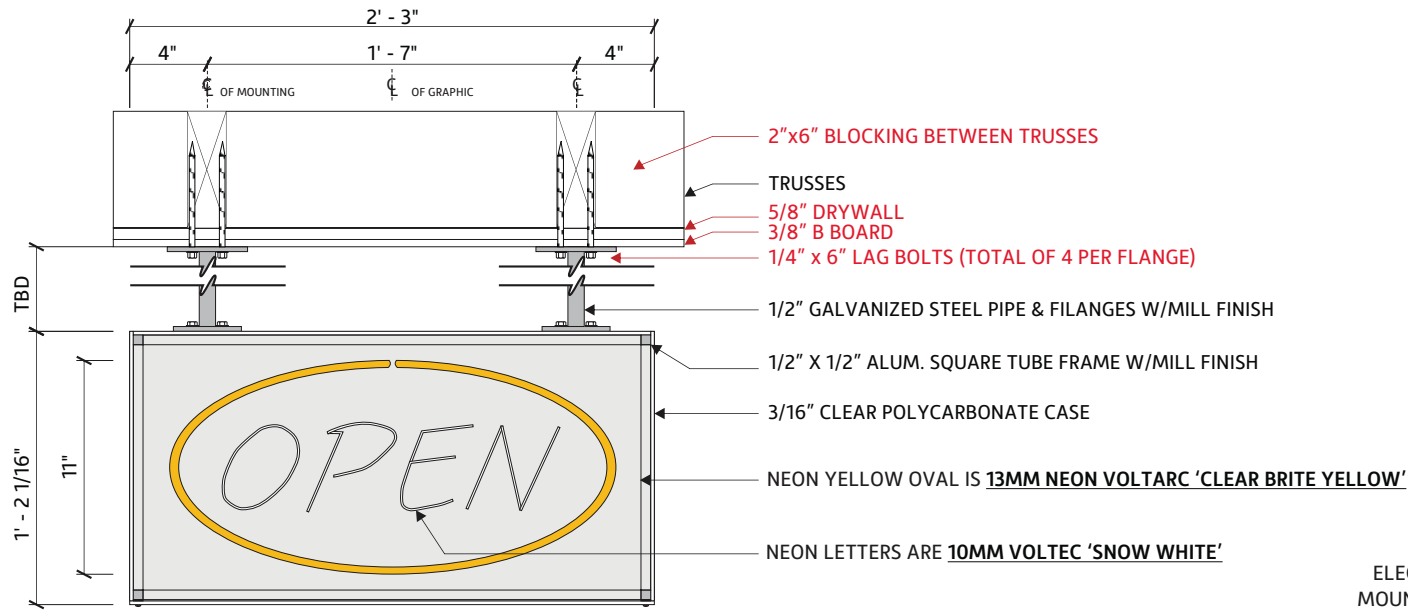
Site ID: RC0935

AGI PM: Scott Rogers

This document is the sole property of AGI, and all design, manufacturing, reproduction, use and sale rights regarding the same are expressly forbidden. It is submitted under a confidential relationship, for a special purpose, and the recipient, by accepting this document assumes custody and agrees that this document will not be copied or reproduced in whole or in part, nor its contents revealed in any manner or to any person except for the purpose for which it was tendered, nor any special features peculiar to this design be incorporated in other projects.

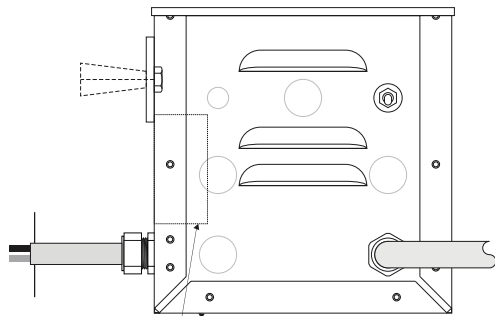


B

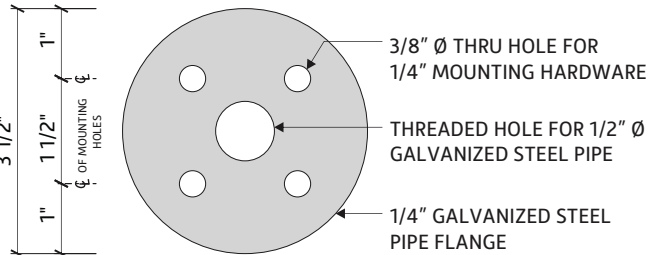
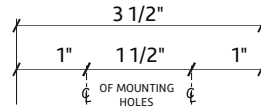


Scale: 1 1/4"=1'

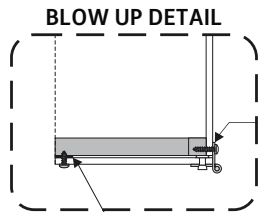
- NOTES:**
 1.) TRANSFORMER IS MOUNTED REMOTELY
 2.) CONNECT 14 GA GROUND WIRE TO EACH MOUNTING FLANGE & TO GROUND LUG PROVIDED BY TRANSFORMER.
 -CONNECT TRANSFORMER GROUND TO SERVICE GROUND AT PANEL BOX



LIGHTING COMPONENTS
 LC-2-12-3-C (2,000-12,000V 30 MA)
 MOUNTED IN REMOVE TRANSFORMER BOX



PIPE FLANGE DETAIL



(3) STRIPS OF 1/2" WIDE BLACK VELCRO TO CLOSE POLYCARBONATE DOOR @ TUBE FRAME
 -DOOR IS SECURED W/ (2) #6 S.S.P.H. SHEET METAL SCREWS

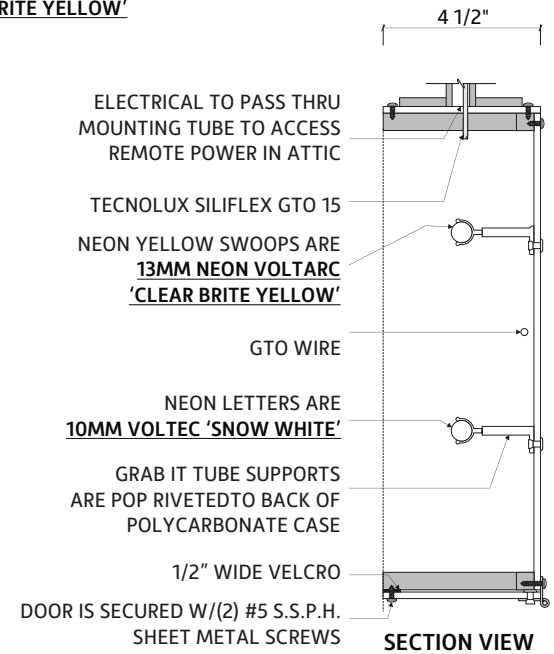
1 1/2" CONTINUOUS PIANO HINGE IS POP RIVETED TO POLYCARBONATE BOTTOM & MECHANICALLY FASTENED TO POLYCARBONATE BACKER & ALUM. TUBE FRAME 2/ #6 S.S.P. H. SHEET METAL SCREWS

CUTSHEET

ONS (H)

INTERIOR SIGN

PIPE LENGTH TO BE VERIFIED



ELECTRICAL DATA

VOLTAGE	120
AMPERAGE	2.1



Location: Simsbury, CT

Date: 02/19/2022

This document is the sole property of AGI, and all design, manufacturing, reproduction, use and sale rights regarding the same are expressly forbidden. It is submitted under a confidential relationship, for a special purpose, and the recipient, by accepting this document assumes custody and agrees that this document will not be copied or reproduced in whole or in part, nor its contents revealed in any manner or to any person except for the purpose for which it was tendered, nor any special features peculiar to this design be incorporated in other projects.

Site ID: RC0935

AGI PM: Scott Rogers





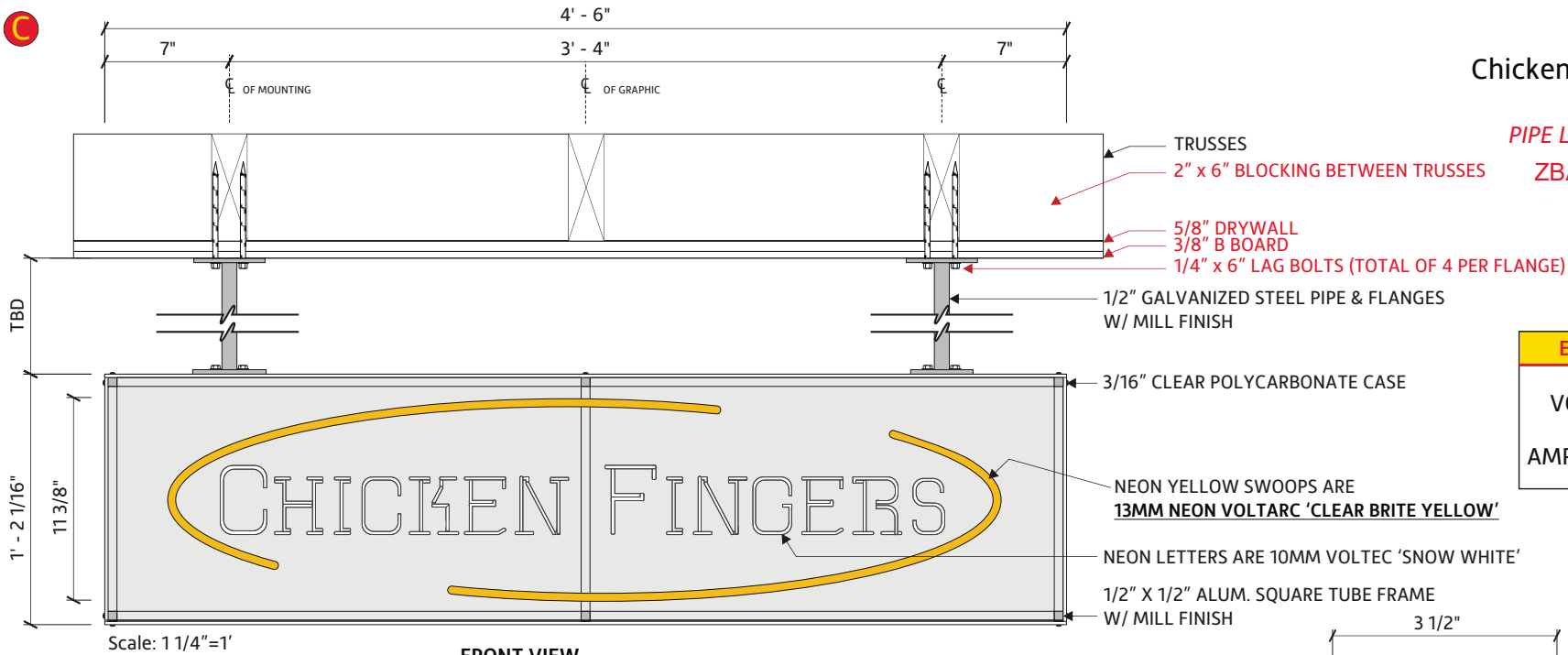
CUTSHEET

Chicken Fingers Neon Sign

INTERIOR SIGN

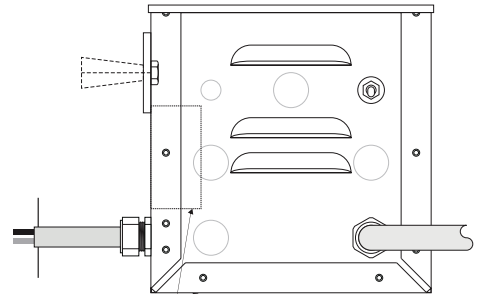
PIPE LENGTH TO BE VERIFIED

ZBA approved on 2/28/24



ELECTRICAL DATA	
VOLTAGE	120
AMPERAGE	2.1

NOTES:
 1.) TRANSFORMER IS MOUNTED REMOTELY IN ATTIC. TRANSFORMERS ARE TO BE ELECTRONIC.



LIGHTING COMPONENTS
 LC-2-12-3-C (2,000-12,000V 30 MA)
 MOUNTED IN REMOVE TRANSFORMER BOX

FRONT VIEW

ELECTRICAL TO PASS THRU MOUNTING TUBE TO ACCESS REMOTE POWER IN ATTIC

TECNOLUX SILIFLEX GTO 15
 NEON YELLOW SWOOPS ARE 13MM NEON VOLTARC 'CLEAR BRITE YELLOW'

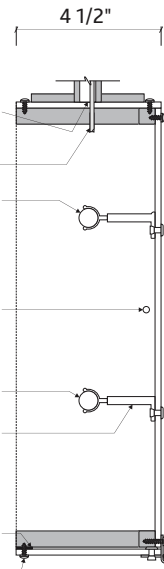
GTO WIRE

NEON LETTERS ARE 10MM VOLTEC 'SNOW WHITE'

GRAB IT TUBE SUPPORTS ARE POP RIVETED TO BACK OF POLYCARBONATE CASE

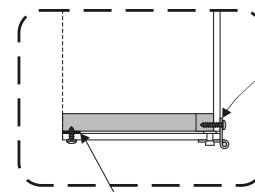
1/2" WIDE VELCRO

DOOR IS SECURED W/ (2) #5 S.S.P.H. SHEET METAL SCREWS

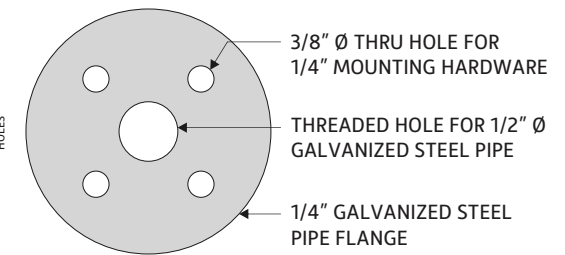
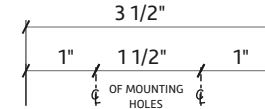


SECTION VIEW

BLOW UP DETAIL



1 1/2" CONTINUOUS PIANO HINGE IS POP RIVETED TO POLYCARBONATE BOTTOM & MECHANICALLY FASTENED TO POLYCARBONATE BACKER & ALUM. TUBE FRAME 2/ #6 S.S.P. H. SHEET METAL SCREWS
 (3) STRIPS OF 1/2" WIDE BLACK VELCRO TO CLOSE POLYCARBONATE DOOR @ TUBE FRAME
 -DOOR IS SECURED W/ (2) #6 S.S.P.H. SHEET METAL SCREWS



PIPE FLANGE DETAIL



Location: Simsbury, CT

Date: 02/19/2022

This document is the sole property of AGI, and all design, manufacturing, reproduction, use and sale rights regarding the same are expressly forbidden. It is submitted under a confidential relationship, for a special purpose, and the recipient, by accepting this document assumes custody and agrees that this document will not be copied or reproduced in whole or in part, nor its contents revealed in any manner or to any person except for the purpose for which it was tendered, nor any special features peculiar to this design be incorporated in other projects.

Site ID: RC0935

AGI PM: Scott Rogers



ZBA APPROVED ON 2/28/24 WITH INTERNAL ILLUMINATION AS SHOWN



Location: Simsbury, CT

Date: 02/19/2022

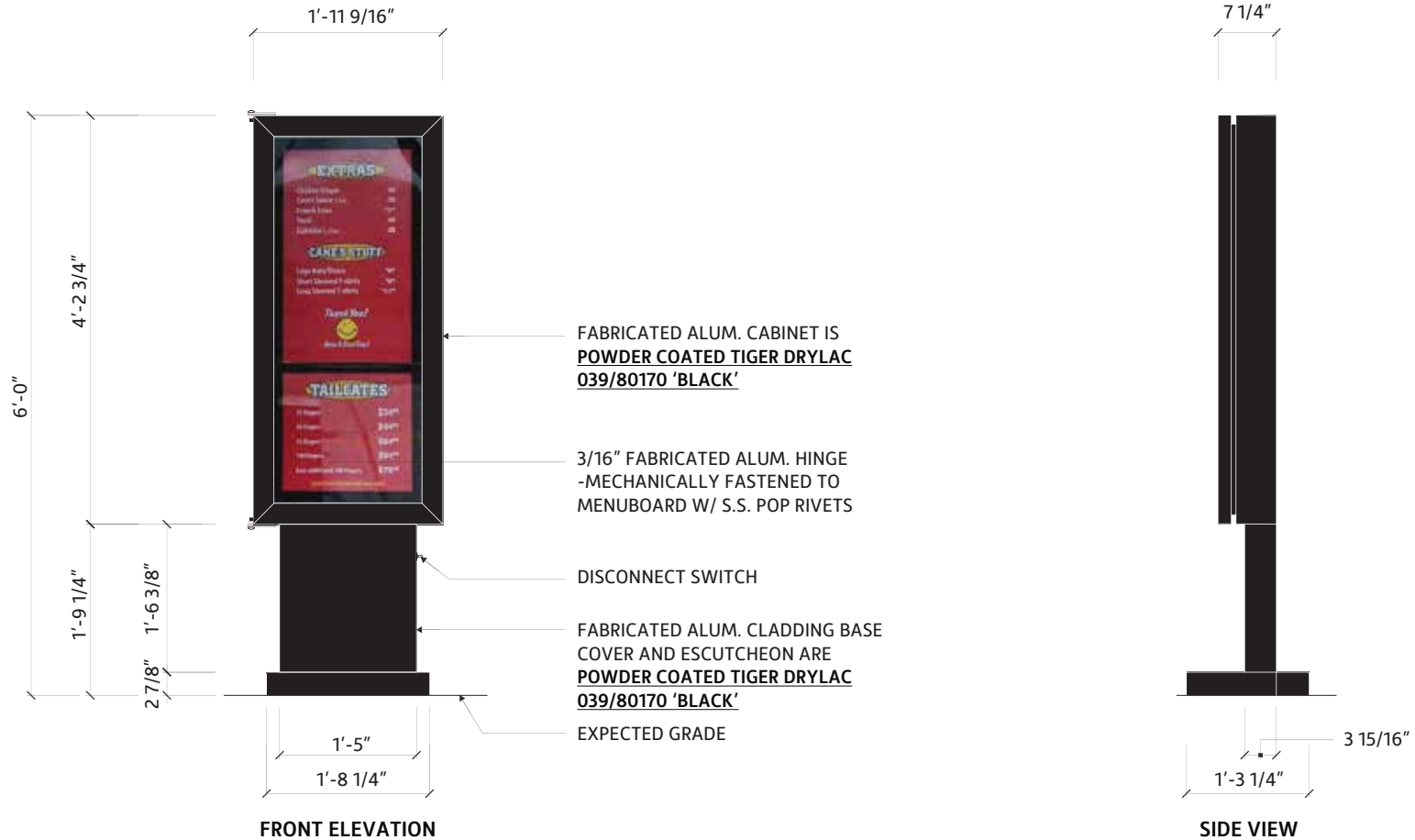
This document is the sole property of AGI, and all design, manufacturing, reproduction, use and sale rights regarding the same are expressly forbidden. It is submitted under a confidential relationship, for a special purpose, and the recipient, by accepting this document assumes custody and agrees that this document will not be copied or reproduced in whole or in part, nor its contents revealed in any manner or to any person except for the purpose for which it was tendered, nor any special features peculiar to this design be incorporated in other projects.

Site ID: RC0935

AGI PM: Scott Rogers



ZBA APPROVED ON 2/28/24 WITH INTERNAL ILLUMINATION AS SHOWN



8.31

Square Footage



Location: Simsbury, CT

Date: 02/19/2022

This document is the sole property of AGI, and all design, manufacturing, reproduction, use and sale rights regarding the same are expressly forbidden. It is submitted under a confidential relationship, for a special purpose, and the recipient, by accepting this document assumes custody and agrees that this document will not be copied or reproduced in whole or in part, nor its contents revealed in any manner or to any person except for the purpose for which it was tendered, nor any special features peculiar to this design be incorporated in other projects.

Site ID: RC0935

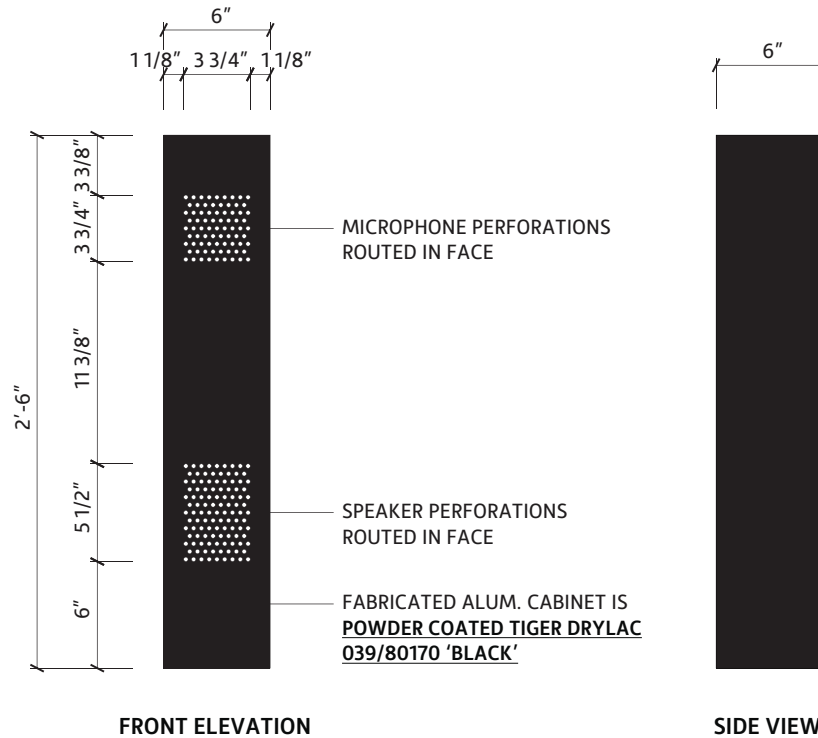
AGI PM: Scott Rogers





CUTSHEET

Speaker Post



Location: Simsbury, CT

Date: 02/19/2022

This document is the sole property of AGI, and all design, manufacturing, reproduction, use and sale rights regarding the same are expressly forbidden. It is submitted under a confidential relationship, for a special purpose, and the recipient, by accepting this document assumes custody and agrees that this document will not be copied or reproduced in whole or in part, nor its contents revealed in any manner or to any person except for the purpose for which it was tendered, nor any special features peculiar to this design be incorporated in other projects.

Site ID: RC0935

AGI PM: Scott Rogers

PAGE 21

