

Dunkin' | 1261 Hopmeadow Street, Simsbury, CT 06070 | NextGen Branding Package | October 7, 2021





Exclusive Brand Identity Warranty Program

Poyant is the only Approved DBI Brands Vendor to provide an Exclusive 3 Year Comprehensive Labor and Material Warranty on all aspects of the Dunkin' Donuts and Baskin Robbins Brand Package.

Our Warranty to you is supported by the largest installation and service fleet in New England as well as a reliable, qualified national network.

Poyant's Exclusive 3 Year Warranty Program for DBI includes:

Comprehensive Warranty including all labor and material and covers the following:

- Construction and framework of your displays
- Paint finish against peeling and noticeable fading of acrylic polyurethane finishes
- Polycarbonate G.E. Lexan faces are guaranteed against breakage
- All internal lighting components, electrical system, LED's and power supplies
- Steel support structures

Factory Trained Service Technicians anywhere in New England

For shipped sign product warranty covers sign product only

Customer _____

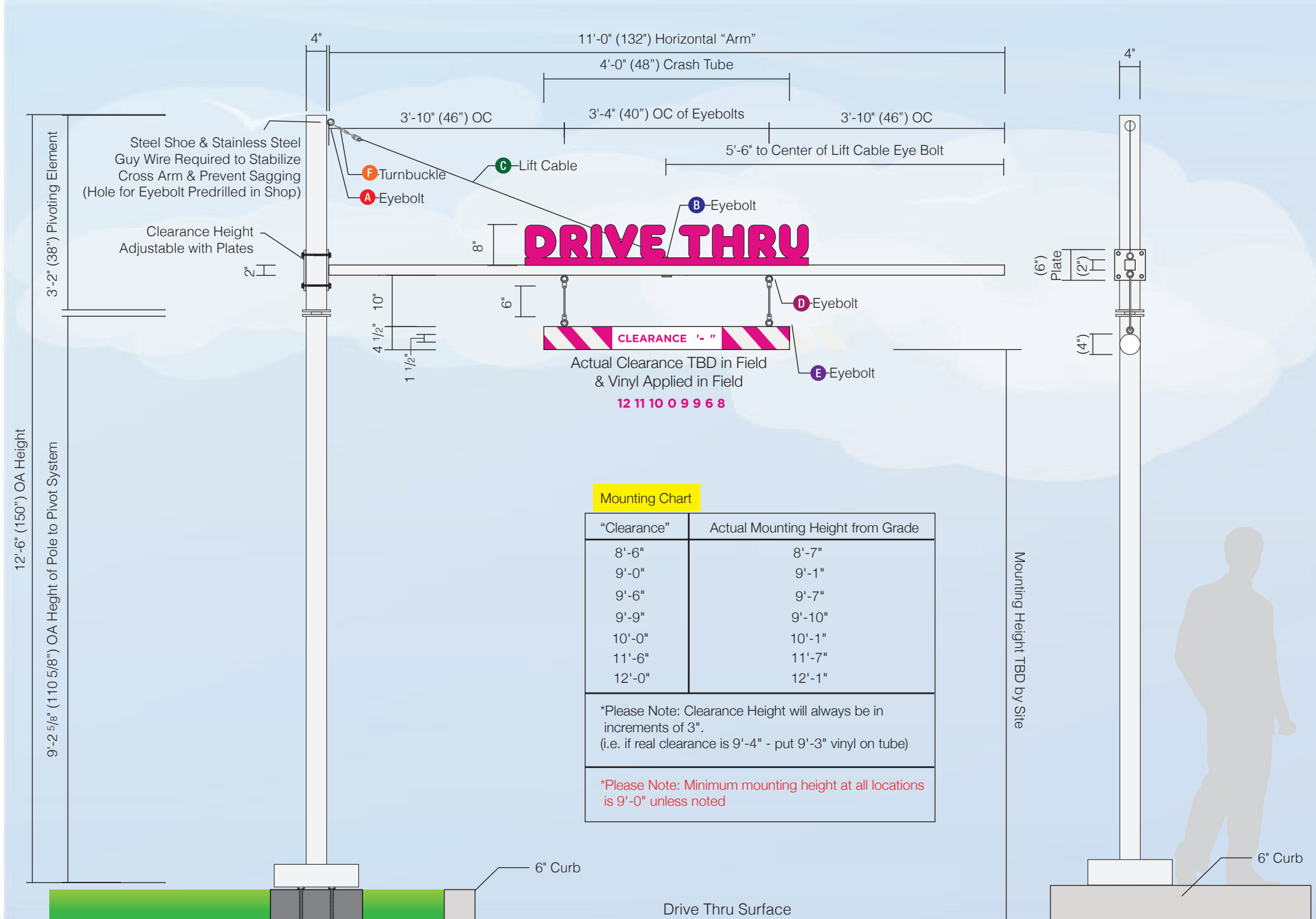
Location _____

Install Date _____

_____ Poyant _____ Date

Excludes "Acts of God", Hurricanes, Unusual Flooding, and Fire.

Poyant
Building Your Brand



Mounting Chart

"Clearance"	Actual Mounting Height from Grade
8'-6"	8'-7"
9'-0"	9'-1"
9'-6"	9'-7"
9'-9"	9'-10"
10'-0"	10'-1"
11'-6"	11'-7"
12'-0"	12'-1"

*Please Note: Clearance Height will always be in increments of 3".
(i.e. if real clearance is 9'-4" - put 9'-3" vinyl on tube)

*Please Note: Minimum mounting height at all locations is 9'-0" unless noted

Specifications
Qty = 1

Single Lane Swing Tube Height Detector

- **Horizontal Arm** to be 2" x 2" x 1/8" x 11'-0" square steel tube welded to 3/8" steel mounting plate and capped at other end (See Detail D-F on page 05.2); painted Nebulous White
- **"Drive Thru"** to be .090 aluminum routed with 1" brake formed mounting flange at bottom, to mechanically fasten to horizontal bar; painted PMS 219C
- **Crash Tube** to be 4" dia SCH40 PVC tube wrapped with reflective digital print; clearance designation to be opaque vinyl applied to digital print; cap ends with white shipping tube end caps
- Crash Tube to have (Qty: 2) **E** McMaster-Carr 1/4" x 1" Eyebolts and (Qty: 2) 1/16" x 6" aircraft cables; to attach to thru bolted (Qty: 2) **D** McMaster-Carr 1/4" x 2 1/2" Eyebolt thru bolted to Horizontal Arm above
- **Lift Cable** to be Approx 105" x 3/16" galvanized steel cable, to attach to Vertical Pole using (Qty: 1) **F** McMaster-Carr turnbuckle, turnbuckle to attach to (Qty: 1) **A** McMaster-Carr 3/8"-16 x 4" Eyebolt thru bolted at top of vertical pole
- Other end of Lift Cable to attach to (Qty: 1) **B** McMaster-Carr 3/8"-16 x 2 1/2" Eyebolt, thru bolted to Horizontal Arm (to prevent Horizontal Arm from sagging)
- (Qty: 6) **G** McMaster-Carr Oval Shaped Connecting Links to be used to connect all cables to eyebolts and turnbuckle
- **Vertical Pole** to be 4" x 4" x 1/4" x 12'-0" OAH square steel pole; Horizontal Arm attaches to Vertical Pole with (Qty 2) 6" x 6" x 3/8" steel plates on either side of pole thru bolted with (Qty 4) 3/8" dia bolts; painted Nebulous White (See Detail D-F on page 05.2)
- **Height Detector manufactured with Swing Away feature if struck by vehicle; gravity will return canopy to aligned position (See all notes and details on page 02.3)**
- Pole to be welded to an 11 3/4" x 11 3/4" x 1/2" thick steel Mounting Plate (See Detail C on page 05.2)
- **Plate Cover** to be brake formed .063 aluminum painted Nebulous White (See Detail G on page 05.2)
- **Vertical Pole Base Plate** to attach to (Qty:4) 3/4" dia. anchor bolts (36" long with 32" embedment)
- **Foundation** by others to be 4'-0" deep x 1'-6" wide x 1'-6" windload

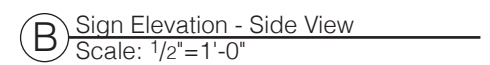
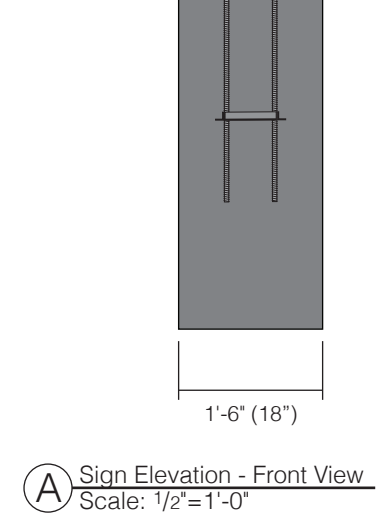
***See Page 7A.2 for install instructions**
*Clearance TBD on site & appropriate numbers added

Colors & Materials

Vinyl
 DD Orange (Clearance)
 Arlon 2100-58

Paint
 To Match PMS 219C; Gloss Finish
 To Match Nebulous White, SW 7063; Gloss Finish

Digital Print
 (Qty 1)
 14 1/4" x 48"
 Reflective Digital Print; 3M Controltac



- Special Order Parts**
- A** (Qty 1) 3/8"-16 x 4" McMaster-Carr Galvanized Steel Eyebolt with Shoulder for Lifting (3014T906) *Vertical Pole
 - B** (Qty 1) 3/8"-16 x 2 1/2" McMaster-Carr Galvanized Steel Eyebolt with Shoulder for Lifting (3014T62) *Horizontal Arm (Top)
 - C** (Qty: 1) McMaster-Carr Galvanized Steel Wire Rope, 7 x 7, 3/16" Diameter (Cut to Size in Field) (3450T31)
 - D** (Qty 2) 1/4"-20 x 2 1/2" McMaster-Carr Zinc Plated Eyebolt with Nut (9489T21) *Horizontal Arm (Bottom)
 - E** (Qty 2) 1/4"-20 x 1" McMaster-Carr Zinc Plated Eyebolt with Nut (9489T17) *Clearance Tube
 - F** (Qty: 1) McMaster-Carr Forged Galvanized Steel Turnbuckle Hook-to-Eye, 700 lbs. Capacity, 9-1/4" Retracted Length (2998T52)
 - G** (Qty: 6) McMaster-Carr Oval Shaped Threaded Connecting Link 1/4" - 9/32", (8947T16)



125 Samuel Barnet Boulevard
New Bedford, MA 02745
800.544.0961 | poyantsigns.com



1261 Hopmeadow Street
Simsbury, CT 0670

Project: 19895
Dunkin'

Sales: Bill Gavigan Jr.
Date: 7.23.21
Designer: RMA

Note:
This is an original unpublished drawing created by Poyant Signs, Inc. It is submitted for your personal use in connection with a project being planned for you by Poyant Signs, Inc. It is not to be shown to anyone outside your organization, nor is it to be reproduced, copied or exhibited in any fashion until transferred.

Revisions:
9.27.21 RMA (Tier 2) No Changes



This sign is intended to be installed in accordance with the requirements of Article 600 of the National Electrical Code and / or other applicable local codes. This includes proper grounding and bonding of the sign.

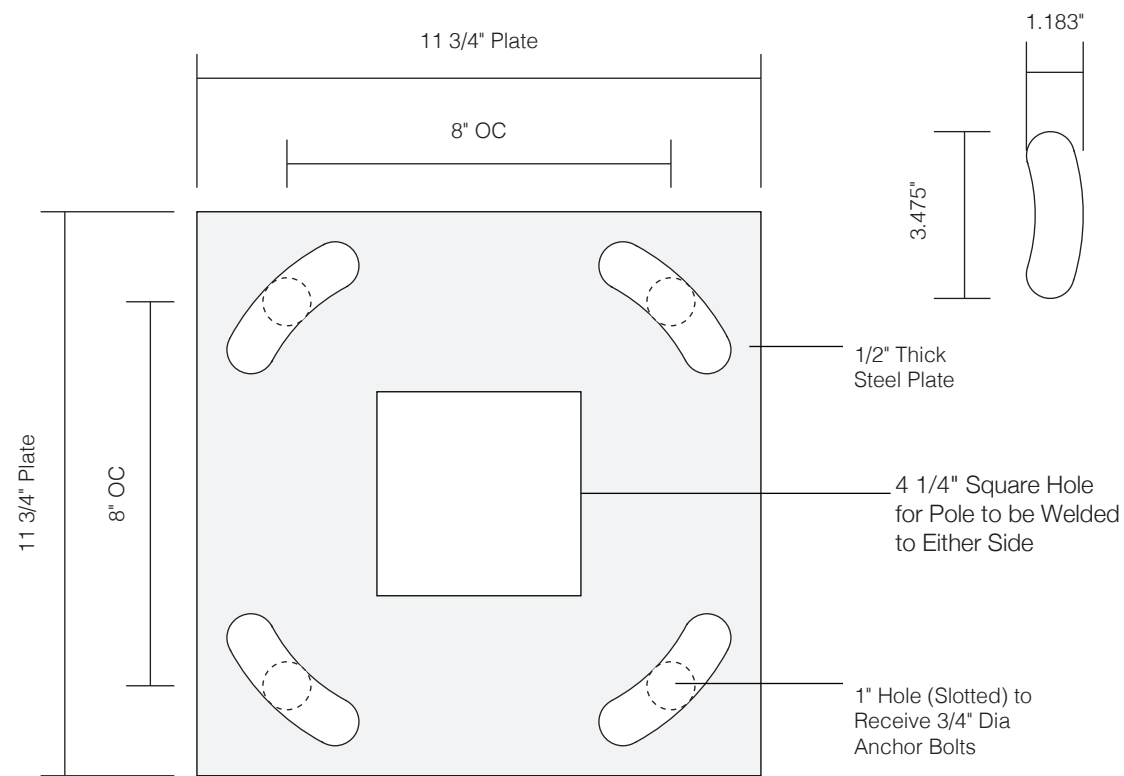


All Signage Shown is Covered by Poyant's Exclusive DD Franchisee 3 Year Brand Identity Warranty Program

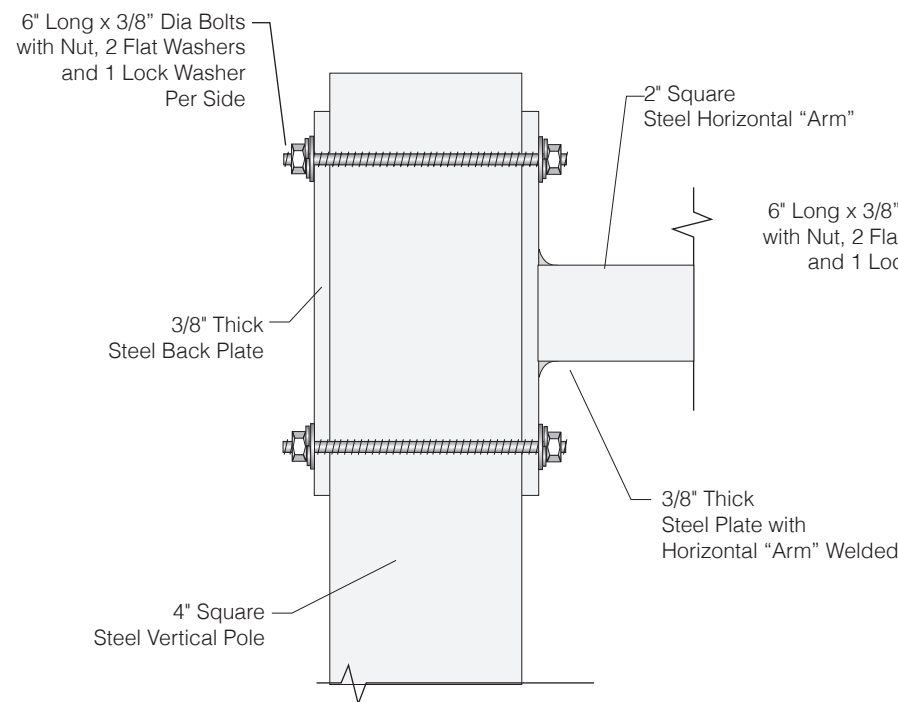
Approved By:

Date:

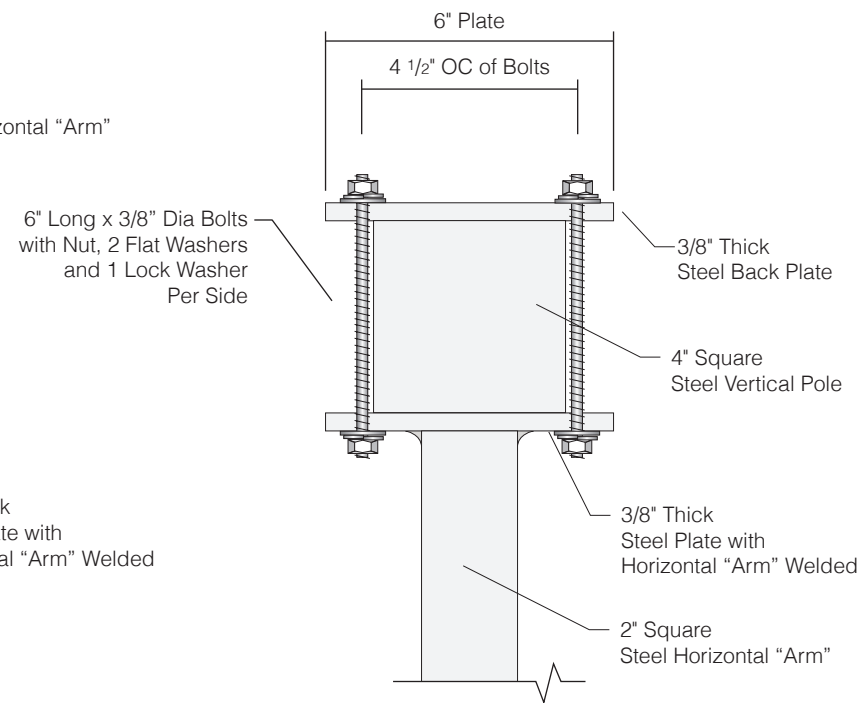
Single Lane Swing Tube Height Detector Option A



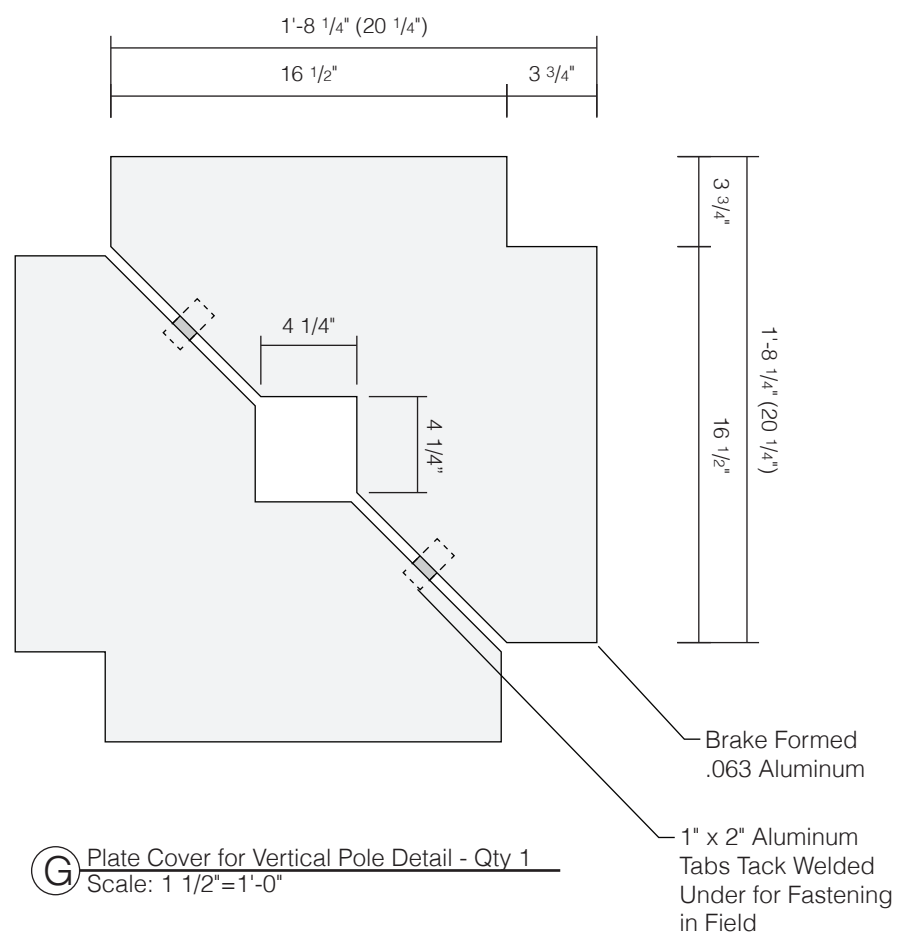
C Vertical Pole Base Plate Detail - Qty 1
Scale: 3"=1'-0"



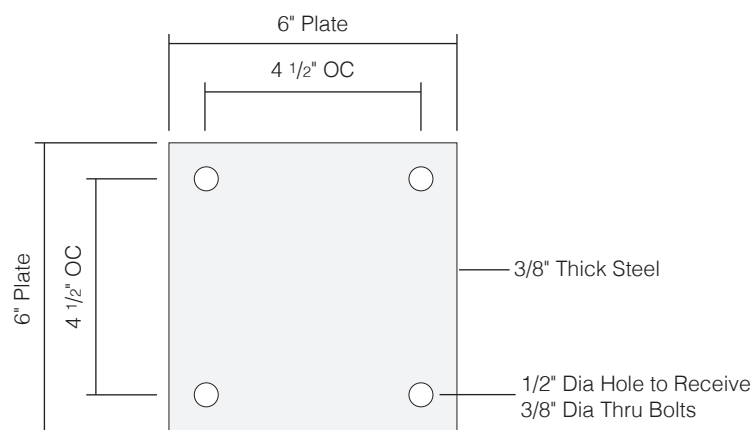
D Horizontal Arm Plate - Front View
Scale: 3"=1'-0"



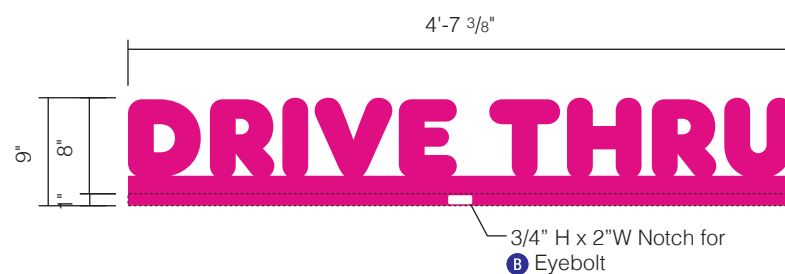
E Horizontal Arm Plate - Top View
Scale: 3"=1'-0"



G Plate Cover for Vertical Pole Detail - Qty 1
Scale: 1 1/2"=1'-0"



F Horizontal Arm Plates - Qty 2
Scale: 3"=1'-0"



G Notch in Graphics
Scale: 3/4"=1'-0"

Height Detector Installation Instructions with Anchor Bolt Foundation:

1. Set-Up Ladder
2. Pre-Level Leveling Nuts
3. Lift and Set Vertical Column, tighten down with flat, lock and nut and confirm column is level on all sides
4. Measure and mark vertical column for correct Clearance Height for Horizontal Arm
5. Pre-assemble all components to the Arm before lifting including Clearance Vinyl numbers
6. Remove Backer Plate from Horizontal Arm
7. With one man on ladder and one man in basket, lift arm in place, assemble and secure Backer Plate to Vertical Column
8. Install DD Blade Logo using two pre-painted fender washers and tech screws
9. Measure required length of Suspension Cable, cut to size on turnbuckle end and crimp.
10. Install Suspension Cable to turnbuckle and level Horizontal Arm
11. Wipe down and remove all hand prints

Note:
This is an original unpublished drawing created by Poyant Signs, Inc. It is submitted for your personal use in connection with a project being planned for you by Poyant Signs, Inc. It is not to be shown to anyone outside your organization, nor is it to be reproduced, copied or exhibited in any fashion until transferred.

Revisions:
9.27.21 RMA (Tier 2) No Changes



This sign is intended to be installed in accordance with the requirements of Article 600 of the National Electrical Code and / or other applicable local codes. This includes proper grounding and bonding of the sign.

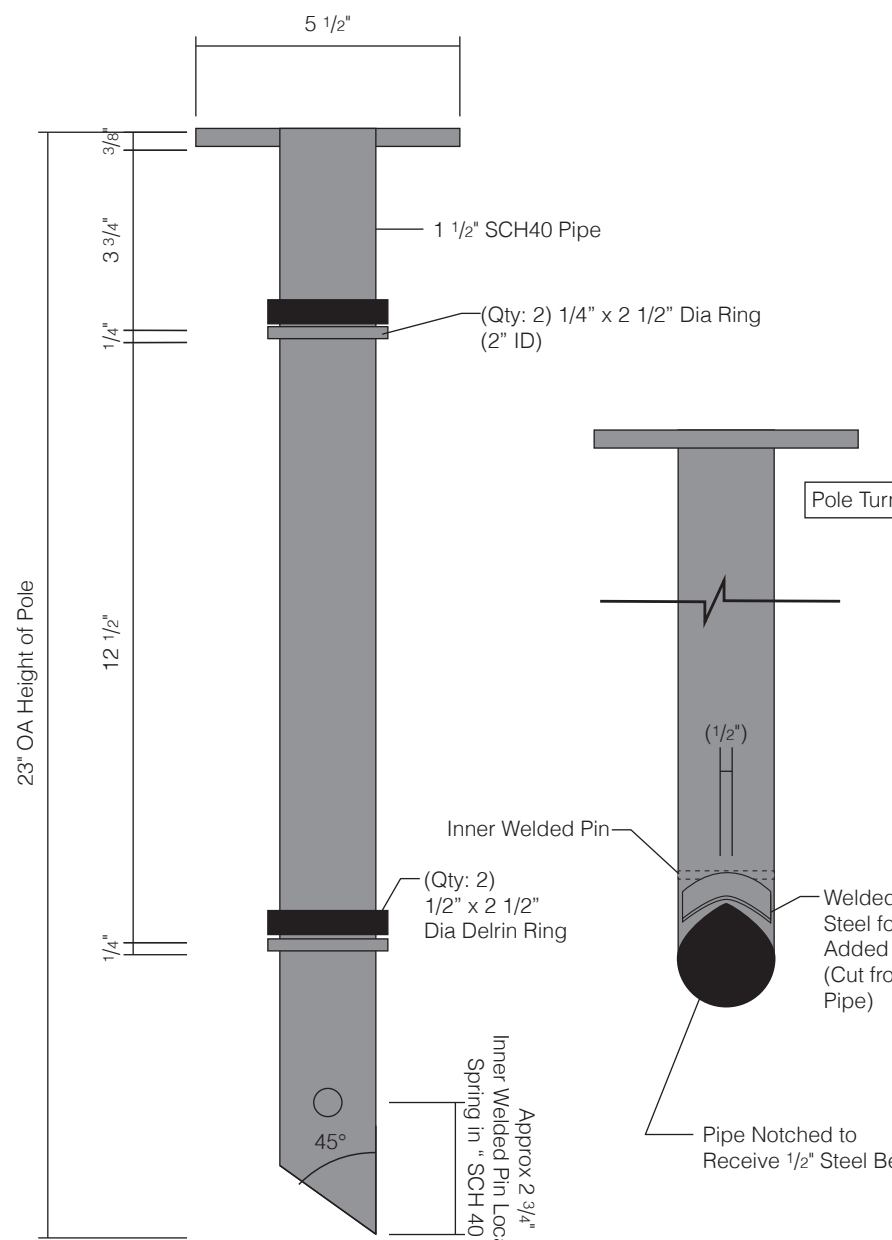


All Signage Shown is Covered by Poyant's Exclusive DD Franchisee 3 Year Brand Identity Warranty Program

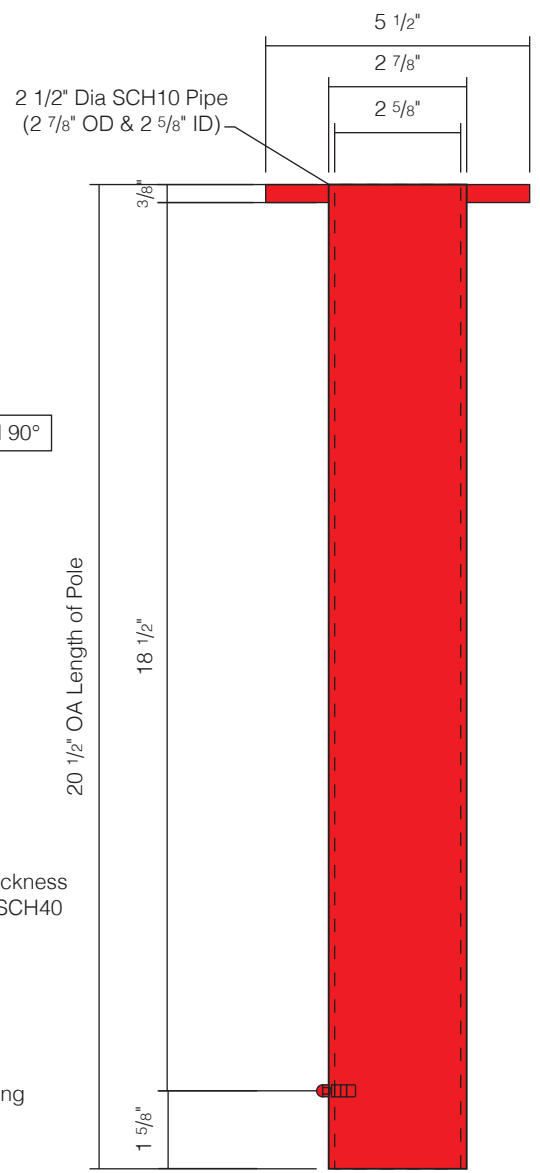
Approved By:

Date:

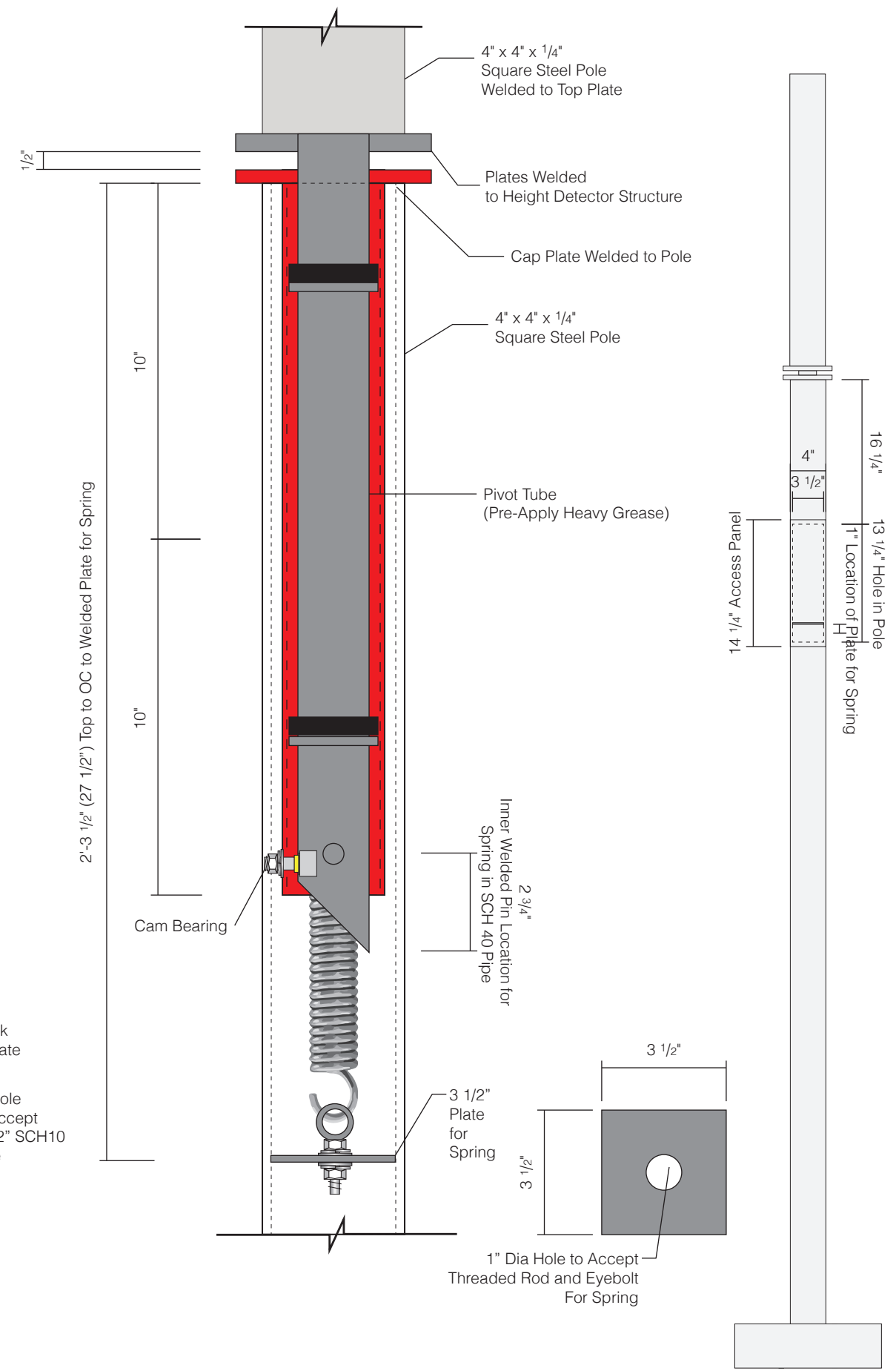
Single Lane Swing Tube Height Detector
Option A



H Self-Centering Canopy Assembly - Pivot Tube
Scale: 3"=1'-0"

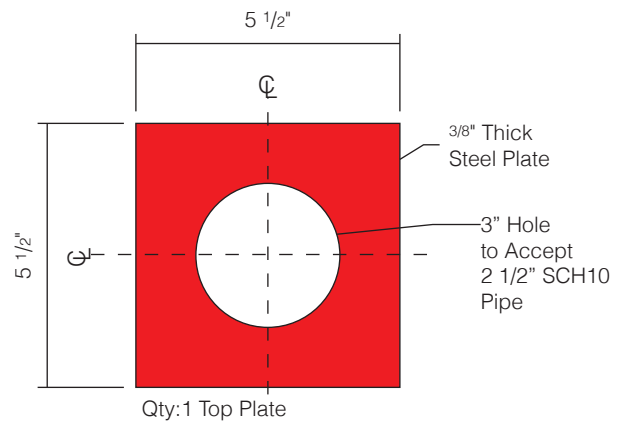
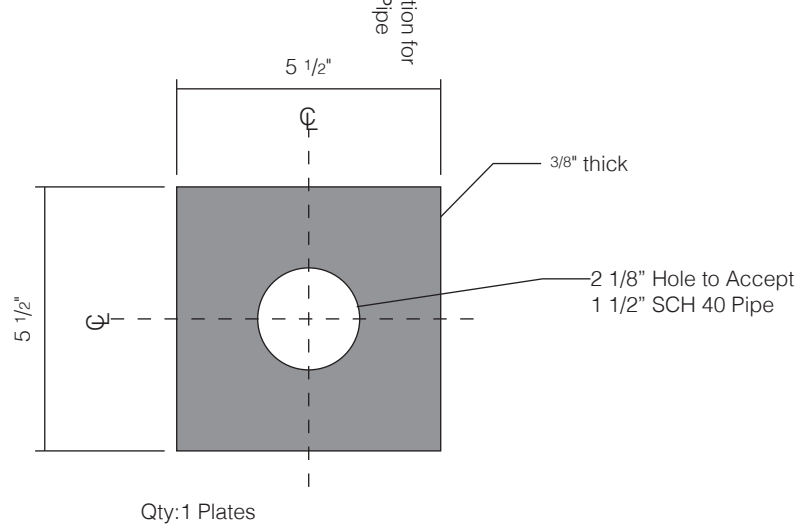


I Self-Centering Canopy Assembly - Internal Stationary Sleeve
Scale: 3"=1'-0"



J Pivot Tube and Internal Stationary Sleeve Assembly
Scale: 3"=1'-0"

K Access to Cam Bearing Detail - Back
Scale: 3/4"=1'-0"



Note:
This is an original unpublished drawing created by Poyant Signs, Inc. It is submitted for your personal use in connection with a project being planned for you by Poyant Signs, Inc. It is not to be shown to anyone outside your organization, nor is it to be reproduced, copied or exhibited in any fashion until transferred.

Revisions:
9.27.21 RMA (Tier 2) No Changes



This sign is intended to be installed in accordance with the requirements of Article 600 of the National Electrical Code and / or other applicable local codes. This includes proper grounding and bonding of the sign.



All Signage Shown is Covered by Poyant's Exclusive DD Franchisee 3 Year Brand Identity Warranty Program

Approved By:

Date:

Single Lane Swing Tube Height Detector
Option A



C Photo Comp - Existing
Not to Scale



D Photo Comp - Proposed
Not to Scale

Project: 19895
Dunkin'

Sales: Bill Gavigan Jr.
Date: 7.23.21
Designer: RMA

Note:
This is an original unpublished drawing created by Poyant Signs, Inc. It is submitted for your personal use in connection with a project being planned for you by Poyant Signs, Inc. It is not to be shown to anyone outside your organization, nor is it to be reproduced, copied or exhibited in any fashion until transferred.

Revisions:
9.27.21 RMA (Tier 2) No Changes



This sign is intended to be installed in accordance with the requirements of Article 600 of the National Electrical Code and / or other applicable local codes. This includes proper grounding and bonding of the sign.

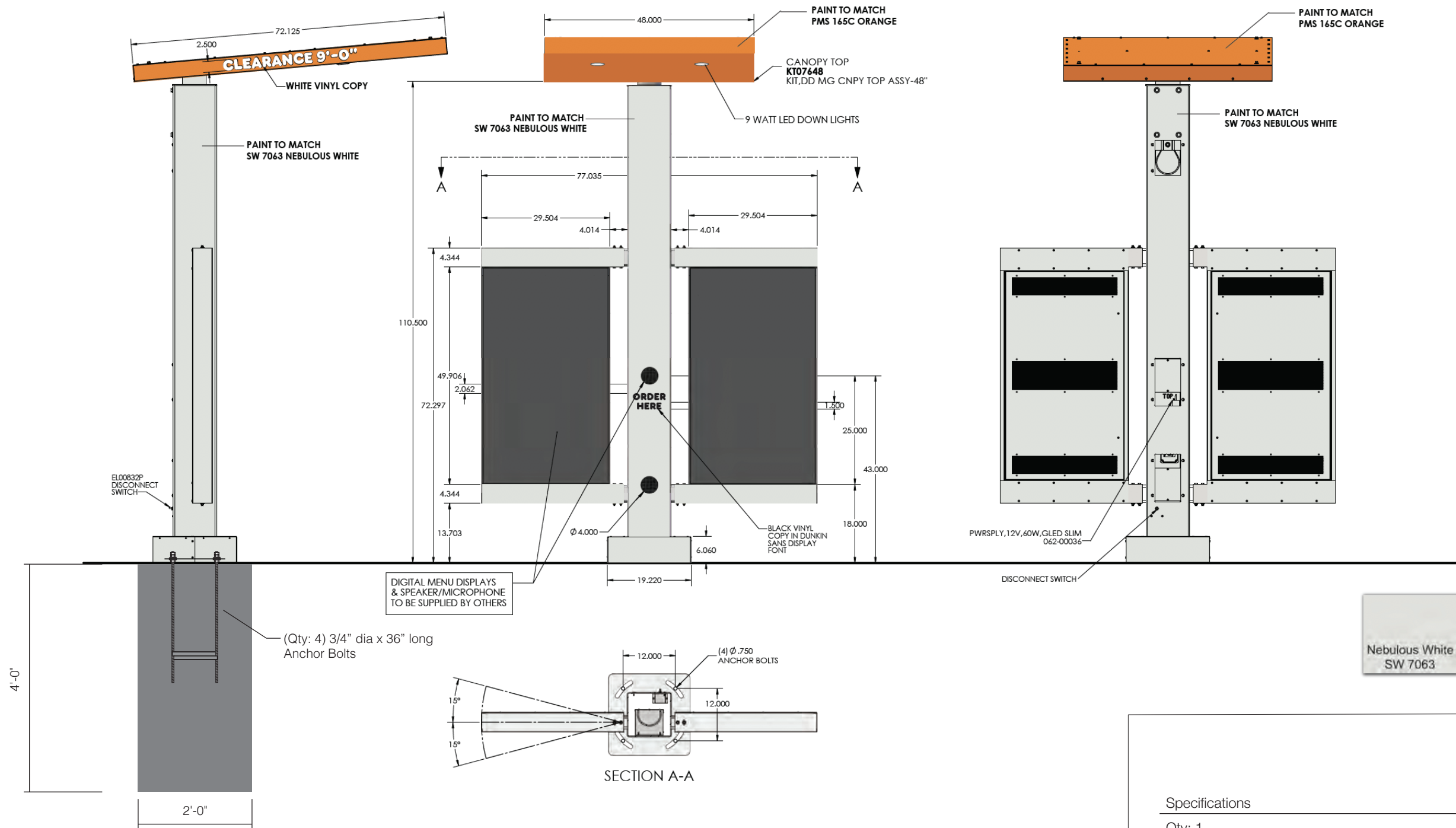


All Signage Shown is Covered by Poyant's Exclusive DD Franchisee 3 Year Brand Identity Warranty Program

Approved By:

Date:

Single Lane Swing Tube Height
Detector
Option A



Specifications

Qty: 1

Everbrite All In One Drive Thru Canopy with Menu Board

- Canopy with menu board purchased from Everbrite by customer
- Foundation and electrical sweeps by others
- Install by Poyant

*Engineering may be required per local code



125 Samuel Barnet Boulevard
New Bedford, MA 02745
800.544.0961 | poyantsigns.com



1261 Hopmeadow Street
Simsbury, CT 06070

Project: 19895
Dunkin'

Sales: Bill Gavigan Jr.
Date: 7.23.21
Designer: RMA

Note:
This is an original unpublished drawing created by Poyant Signs, Inc. It is submitted for your personal use in connection with a project being planned for you by Poyant Signs, Inc. It is not to be shown to anyone outside your organization, nor is it to be reproduced, copied or exhibited in any fashion until transferred.

Revisions:
9.27.21 RMA (Tier 2) No Changes
10.7.21 RMA (R1) Change of Scope



This sign is intended to be installed in accordance with the requirements of Article 600 of the National Electrical Code and / or other applicable local codes. This includes proper grounding and bonding of the sign.



All Signage Shown is Covered by Poyant's Exclusive DD Franchisee 3 Year Brand Identity Warranty Program

Approved By:

Date:

Drive Thru Canopy

Option A



D Photo Comp - Existing
Not to Scale



E Photo Comp - Proposed
Not to Scale

Poyant
Building Your Brand

125 Samuel Barnet Boulevard
New Bedford, MA 02745
800.544.0961 | poyantsigns.com

DUNKIN'

1261 Hopmeadow Street
Simsbury, CT 06070

Project: 19895
Dunkin'

Sales: Bill Gavigan Jr.
Date: 7.23.21
Designer: RMA

Note:
This is an original unpublished drawing created by Poyant Signs, Inc. It is submitted for your personal use in connection with a project being planned for you by Poyant Signs, Inc. It is not to be shown to anyone outside your organization, nor is it to be reproduced, copied or exhibited in any fashion until transferred.

Revisions:
9.27.21 RMA (Tier 2) No Changes
10.7.21 RMA (R1) Change of Scope



This sign is intended to be installed in accordance with the requirements of Article 600 of the National Electrical Code and / or other applicable local codes. This includes proper grounding and bonding of the sign.



All Signage Shown is Covered by Poyant's Exclusive DD Franchisee 3 Year Brand Identity Warranty Program

Approved By:

Date:

Drive Thru Canopy

Option A



1261 Hopmeadow Street
Simsbury, CT 06070

Project: 19895
Dunkin'

Sales: Bill Gavigan Jr.
Date: 7.23.21
Designer: RMA

Note:
This is an original unpublished drawing created by Poyant Signs, Inc. It is submitted for your personal use in connection with a project being planned for you by Poyant Signs, Inc. It is not to be shown to anyone outside your organization, nor is it to be reproduced, copied or exhibited in any fashion until transferred.

Revisions:
9.27.21 RMA (Tier 2) No Changes
10.7.21 RMA (R1) Quantity Change



This sign is intended to be installed in accordance with the requirements of Article 600 of the National Electrical Code and / or other applicable local codes. This includes proper grounding and bonding of the sign.



All Signage Shown is Covered by Poyant's Exclusive DD Franchisee 3 Year Brand Identity Warranty Program

Approved By:

Date:

Anchor Bolts

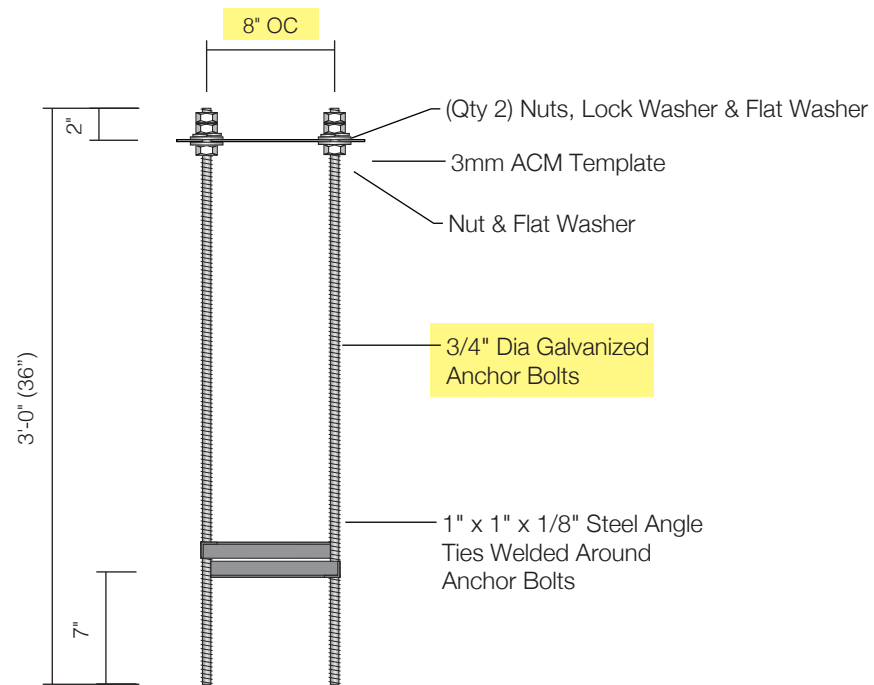
Option A

Specifications

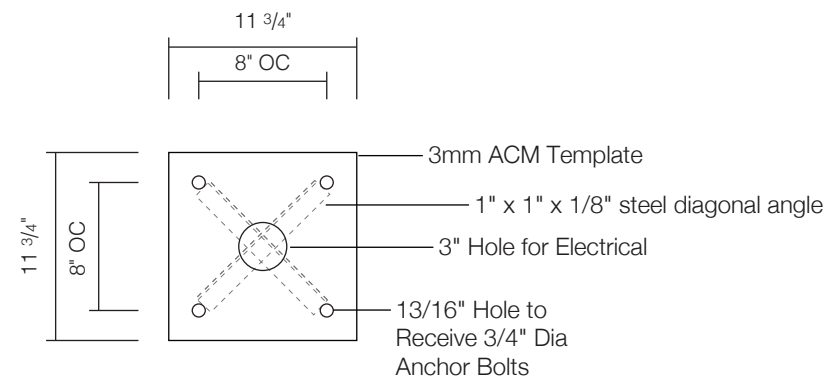
Qty: 2 (Qty: 1 - 8 OC; Height Detector)
(Qty: 1 - 12 OC; All In One Drive Thru Canopy)

Anchor Bolt Assemblies for Height Detector and Digital Menu Board and Drive Thru Canopy

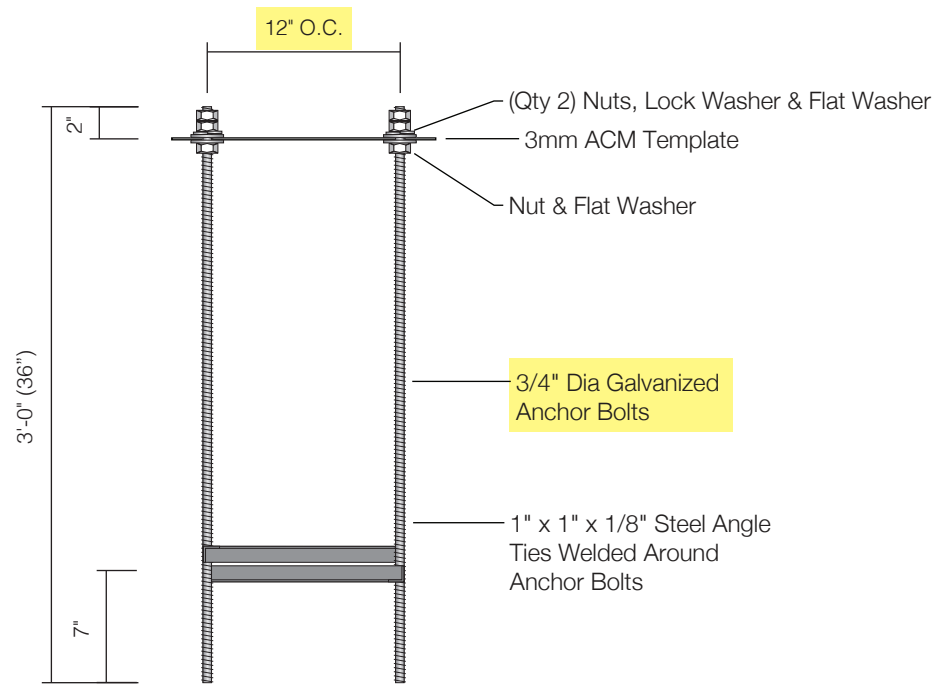
- (Qty 4) 3/4" dia galvanized anchor bolts (36" long with 32" embedment)
- (Qty 1) 3mm ACM plate template to hold anchor bolts with 3 nuts, 2 flat washers, and 1 lock washer per bolt
- (Qty: 2) 1" x 1" x 1/8" steel diagonal angle welded to anchor bolts (steel ties welded around) to keep anchor bolts straight and true



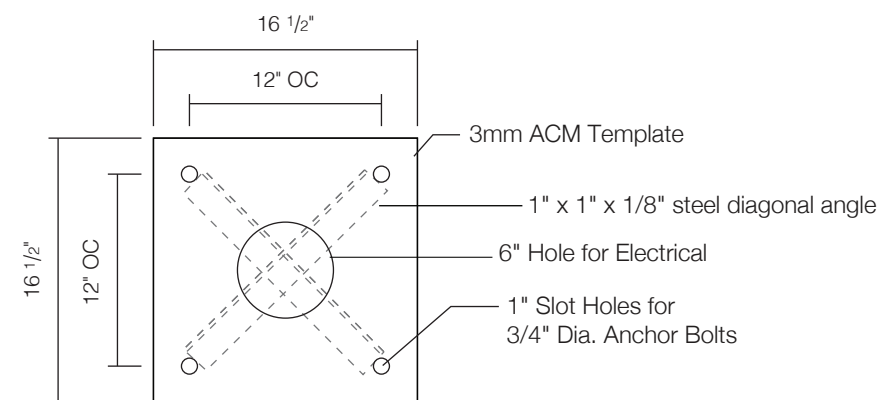
A Anchor Bolt Assembly Detail (Qty: 1)
Scale: 1"=1'-0"



B Plywood Template Detail (Qty: 1)
Scale: 1"=1'-0"



C Anchor Bolt Assembly Detail (Qty: 1)
Scale: 1"=1'-0"



D Mounting Plate Detail - (Qty: 1)
Scale: 1"=1'-0"