



THE SITE

SIMSBURY MEADOWS

PAW MEADOW DOG PARK

IRON HORSE BLVD.

HOPMEADOW STREET

PHELPS LANE

PLANK HILL ROAD

SIMSBURY CEMETERY

MAP REFERENCES:

1. "PROPERTY SURVEY PROPERT OF SIMSBURY HISTORICAL SOCIETY, INC. 800 HOPMEADOW STREET SIMSBURY, CONNECTICUT SCALE 1"=20' DATE APR., 1998 SHEET NO. 1 OF 1 M 98-18 NASCIMBENI & JAHNE SURVEYORS, P.C. AVON, CONNECTICUT" REVISED THROUGH 5/19/2000
2. "ANDY'S SUPERMARKET 836 HOPMEADOW SIMSBURY, CT. STE PLAN TOPO & GRADING SCALE 1"=20' DATE 5 JULY 90 JUROS CONSULTING ENGINEERS MERIDEN, CT." REVISED THROUGH FEB '91.

SURVEY NOTES:

THIS MAP HAS BEEN PREPARED PURSUANT TO THE REGULATIONS OF CONNECTICUT STATE AGENCIES SECTIONS 20-300b-1 THROUGH 20-300b-20 AND THE "STANDARDS FOR SURVEYS AND MAPS IN THE STATE OF CONNECTICUT" AS PREPARED AND ADOPTED BY THE CONNECTICUT ASSOCIATION OF LAND SURVEYORS, INC. ON SEPTEMBER 26, 1996.

THE TYPE OF SURVEY PERFORMED IS AN EXISTING CONDITIONS SURVEY.

BOUNDARY DETERMINATION CATEGORY-RESURVEY BASED ON A DEPENDENT RESURVEY.

THIS PLAN CONFORMS TO HORIZONTAL ACCURACY CLASS A-2, AND VERTICAL ACCURACY CLASS T-2.

HORIZONTAL AND VERTICAL DATUM ARE BASED ON MAP REFERENCE 1.

ZONE: SCZ








PROPERTY HAS BEEN GRANTED SPECIAL EXCEPTIONS VOL.374 PG.332, VOL.395 PG.497 & VOL.652 PG.839 FOR PARKING, SIGNAGE & LIQUOR STORE SIZE..

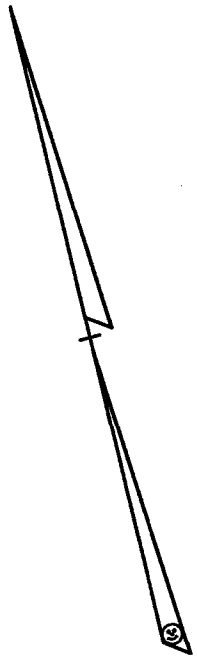
PROPERTY IS SUBJECT TO AN ELECTRIC EASEMENT IN FAVOR OF HARTFORD ELECTRIC LIGHT COMPANY VOL.160 PG.382

PROPERTY IS SUBJECT TO A SEWER AGREEMENT VOL.200 PG.533

800 HOPMEADOW
STREET
N/F SIMSBURY
HISTORICAL
SOCIETY IN

LEGEND

	PROPERTY LINE
	CHAINLINK FENCE
	TREE/VEGETATION LINE
	BITUMINOUS PAVEMENT
	BITUMINOUS/CONCRETE CURB
MH O YD	MANHOLE OR YARD DRAIN
	CATCH BASIN
	FIRE HYDRANT



HELTCO
125

PAVERS

180

L.S.

EX.
REBAR

CONC.

L.S.

X178.5

800 HOPMEADOW
STREET
N/F SIMSBURY
HISTORICAL
SOCIETY INC.



12" Ø
PINE



12" Ø
MAPLE

12" Ø
PINE



30" Ø

EX.
REBAR



HELTCO
125

PAVERS

180

L.S.

EX.
REBAR

CONC.

L.S.

X178.5

800 HOPMEADOW
STREET
N/F SIMSBURY
HISTORICAL
SOCIETY INC.

12" Ø
PINE

12" Ø
MAPLE

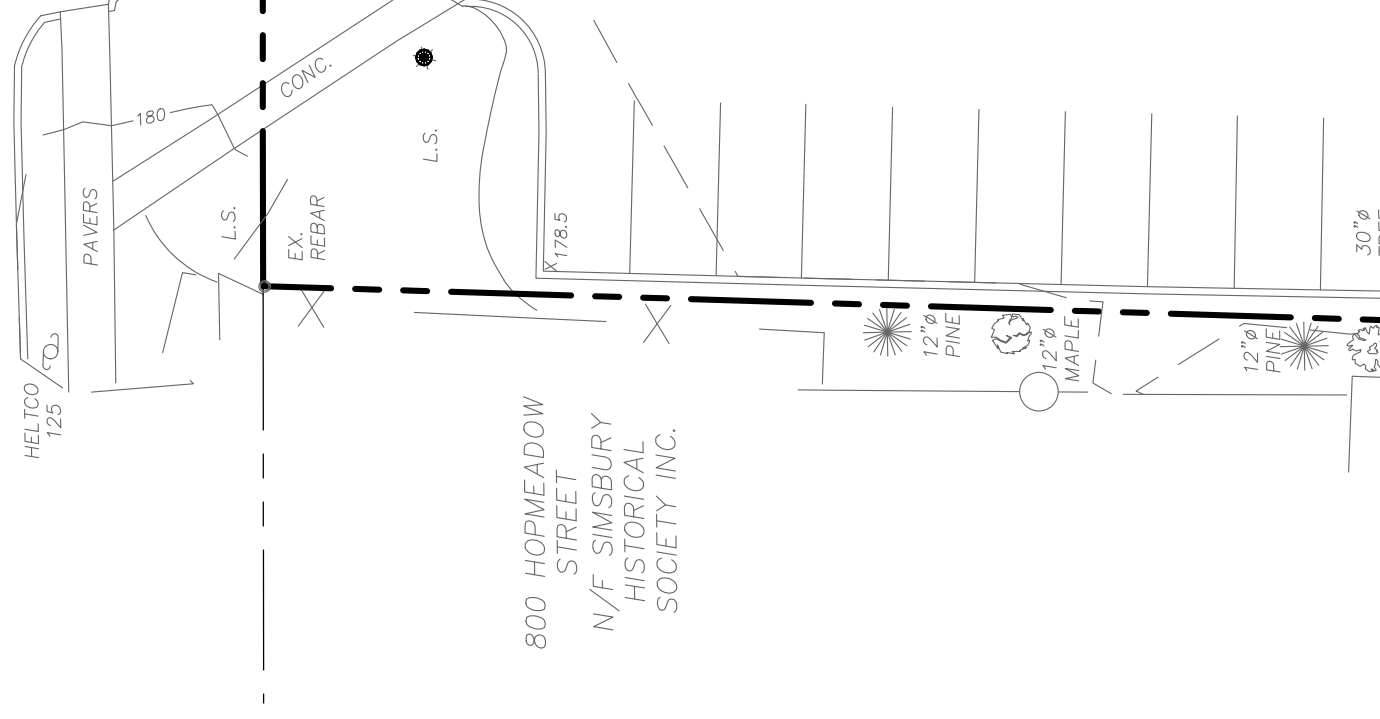
12" Ø
PINE

30" Ø

REMOVE LIGHT P
BASE TO REI

MATERIALS LEGEND

(A)	BITUMINOUS CONCRETE PAVEMENT
(C)	CONCRETE PAVEMENT WALKS
(KE)	KNIFE EDGE CURB
(1)	BITUMINOUS CONCRETE CURB
(2)	INTEGRAL CONCRETE CURB
(3)	INTEGRAL CONCRETE CURB (FLUSH)
(11)	LIGHTING POLE & LUMINAIRE
(13)	CONCRETE FILLED STEEL BOLLARD
(14)	SCREEN FENCE - 6" PLANKS
(22)	HANDICAP RAMPS
(23)	ACCESSIBLE PARKING SIGNAGE & TYPICAL SIGN MOUNTING
(24)	ACCESSIBLE PARKING SPACES
(27A)	STOP SIGN
(27B)	DO NOT ENTER SIGN
(42)	PAINTED CROSSWALK STRIPING
(43)	PAINTED STOP BAR DRIVE-THRU EXIT
(44)	PAINTED DIRECTIONAL ARROW



HELTCO
125

PAVERS

180

L.S.

EX.
REBAR

CONC.

L.S.

X178.5

800 HOPMEADOW
STREET
N/F SIMSBURY
HISTORICAL
SOCIETY INC.



12" Ø
PINE



12" Ø
MAPLE

12" Ø
PINE



30" Ø

EX.
REBAR



Shrub List

Sym.	Quan.	Botanical Name	Common Name	Size	Root
JH	19	JUNIPERUS HORIZONTALIS	CREeping JUNIPER	24in.-30in. Spd.	CONT.

Ground Cover & Perennials

Sym.	Quan.	Botanical Name	Common Name	Size	Root
PAH	47	PENNISETUM ALOPECUROIDES 'HAMELN'	DWARF FOUNTAIN GRASS		CONT.

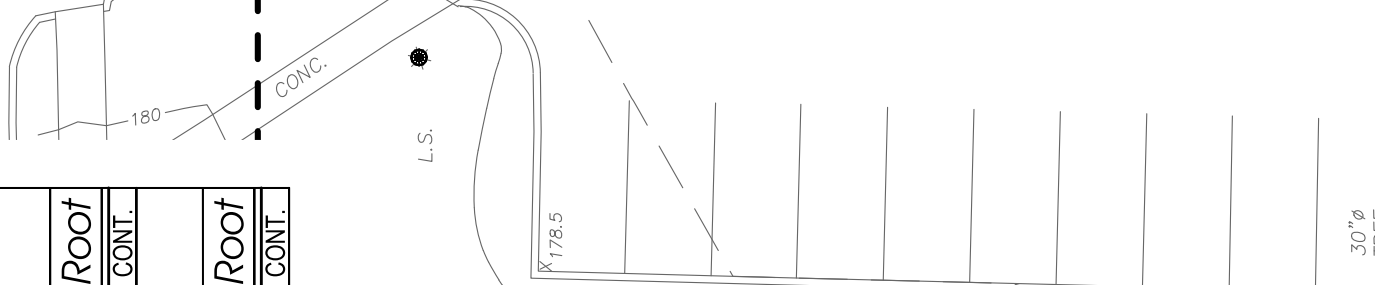
PLANT LIST NOTES:

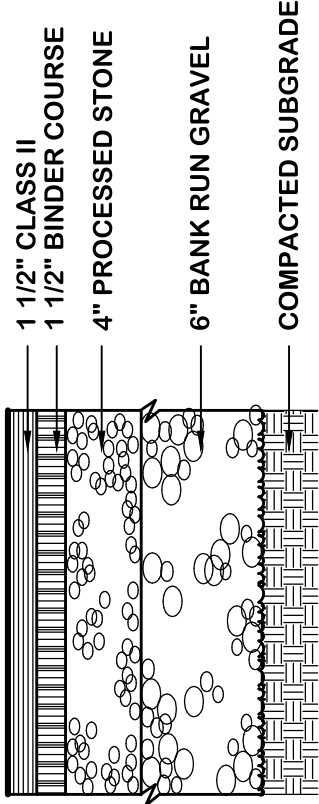
1. THE CONTRACTOR IS RESPONSIBLE FOR VERIFYING PLANT QUANTITIES BY COUNT ON THE PLAN. IF THERE IS A DISCREPANCY BETWEEN THE PLAN AND THE PLANT LIST, THE PLAN WILL PREVAIL.
2. SUBSTITUTIONS ARE ALLOWED DUE TO AVAILABILITY AND HEALTH OF PLANTS. ALL SUBSTITUTIONS SHALL BE APPROVED BY PROJECT LANDSCAPE ARCHITECT.
3. ALL PLANTS TO BE NURSERY STOCK.
4. ALL SHRUBS AND PERENNIALS TO BE INSTALLED IN PLANT BED WITH 4" PINE BARK MULCH. PROVIDE SHOVEL EDGE ON BED.
5. DO NOT OVER MULCH TREE PLANTING. USE ONLY PINE BARK MULCH.
6. ALL MATERIAL - PLANTS, SOIL, GROWING MEDIUM-MUST BE FREE OF INVASIVE SPECIES - ESPECIALLY PURPLE LOOSESTRIFE.

SEEDING OPERATIONS

A. FERTILIZER AND LIMESTONE

CONTRACTOR SHALL CONDUCT APPROPRIATE





BITUMINOUS CONCRETE PAVEMENT

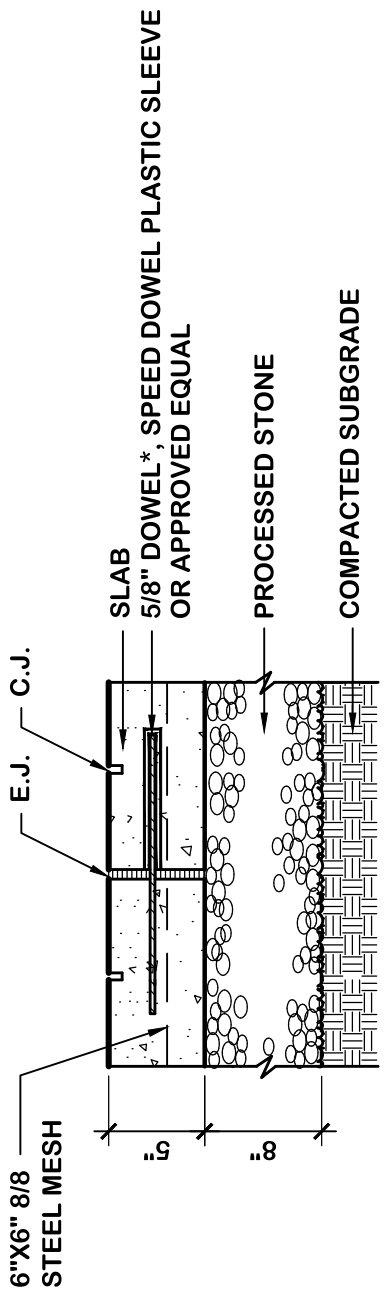
DRIVES AND PARKING

N.T.S.

COMPACTED



A



CONCRETE PAVEMENT

WALKS

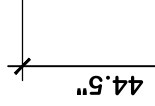
N.T.S.

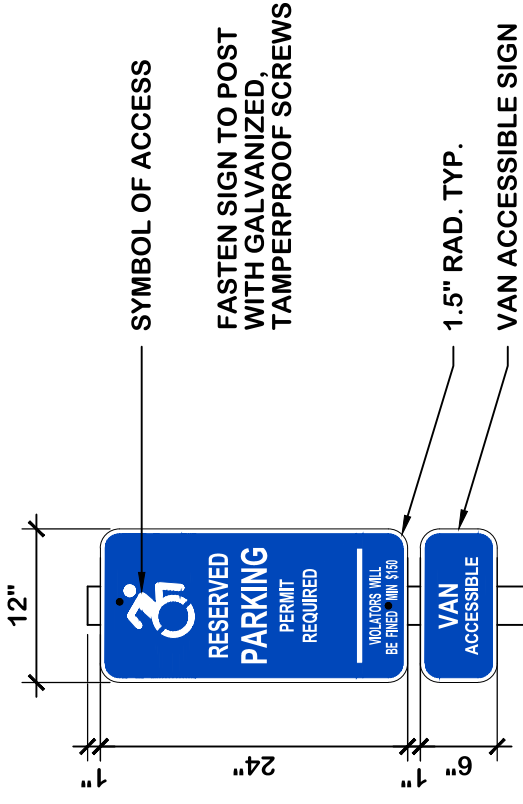
* NOTE: DOWELS FOR CONCRETE WALK SHALL BE 24" LONG,
 2' O.C. & 12" FROM EDGE OF WALK.
 ALL CONCRETE TO BE CONNDOT "PAVEMENT" TYPE PER M.03.01
 CONCRETE TO BE 4,000 PSI MIN.
 SEE DETAIL 22 FOR CONCRETE DEPTH AT RAMP CONDITION.

NOTE:
 INTO N

INTI
 N.T.S.
 ALL CC
 CONCR

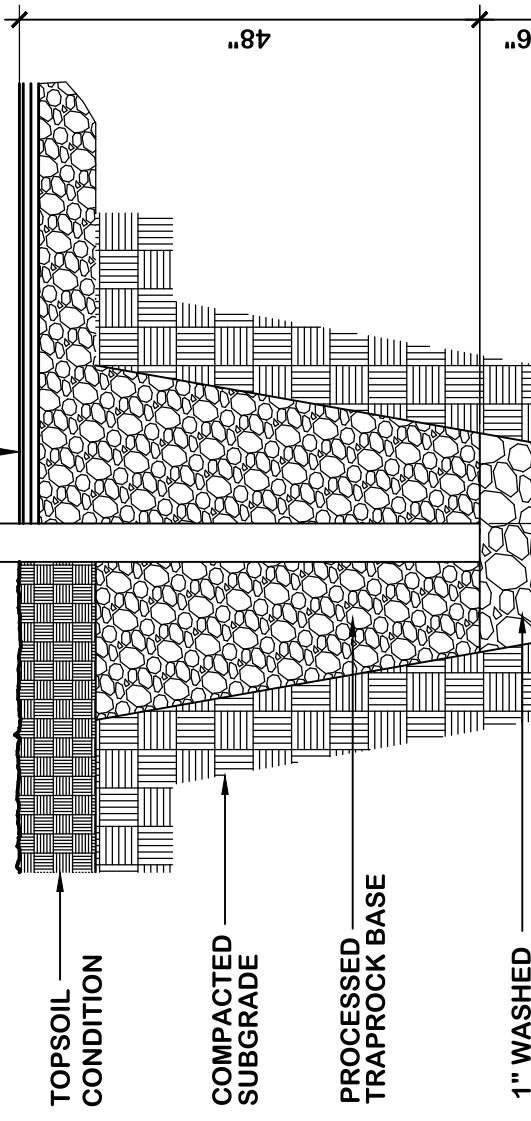
3





PAVEMENT CONDITION
 PROVIDE EPOXY GROUT AROUND POST

3" x 3" CONC.
 FILLED STEEL TUBE





K118 WASHINGTON - LED

The King Luminaire K118 Washington is a beautiful depiction of this street light classic. This historical acorn shape teamed with King Luminaire's high performance LED engines make for a perfect solution for city streets, parks, schools and commercial areas.



King Luminaire

PRODUCT SPECIFICATIONS

R1/B3/B2 LED ENGINE

Light engine shall be an array of 36, 42, 54 or 63 solid state Cree X-Series high power LEDs (light emitting diodes) mounted to a multi-sided, vertical heat sink of highly conductive aluminum. The LED emitters are mounted to removable circuit boards such that they are in full thermal contact with the vertical heat sink. The vertical heat sink is open at the bottom and vented at the top to provide appropriate dynamic airflow cooling for the LED array. The emitters are arranged in various patterns on each face of the vertical heat sink to provide the required light distribution.

The LED arrays include optical baffles constructed of optical grade ABS plastic with a vacuum metallized reflective surface or clear acrylic precision refractors over each diode. Optical options are designed to efficiently control light distribution in IESNA Type IV & V for the B3/B2 and Type III & V for the R1.

P4 LED ENGINE

Light engine shall include an array of Cree X-Series high power LEDs (light emitting diodes). The emitters shall be mounted to a metal core circuit board using SMT technology. The LEDs and circuit boards shall then be mounted to a high performance heat sink.

External light control shall consist of high precision refractive lenses mounted above the LED emitter arrays in such a way to achieve optimum uplight control. The lenses shall also control horizontal light distribution so that either

ter. The luminaire shall be locked in place by means of heavy duty, stainless steel set-screws.

GLOBE ASSEMBLY

The protective globe shall be molded of either, rippled polycarbonate Miles Makrolon GP/OP Thermoplastic Polymer, or equivalent, or rippled acrylic Acrylite Plus Acrylic Polymer, or equivalent, having a minimum thickness of 0.125".

The globe assembly is a self-contained unit consisting of the globe, rugged cast locking ring, and the LED light engine and optical control. The LED light engine is of a modular design, and is able to be quickly removed from the globe assembly. The globe assembly is secured to the main housing by means of a spring-tensioned, twist-locking Rotolock™ unit to allow tool-less removal of the globe, while maintaining a secure seal between the globe assembly and the main body of the luminaire, making the K118 Washington suitable for an outdoor environment.

DRIVER

The LED universal dimmable driver will be class 2 and capable of 120 - 277V or 347 - 480V input voltage, greater than 0.9 power factor, less than 20% total harmonic distortion. The case temperature of the driver can range from -40°C up to 70°C. Each LED system comes with a standard surge protection designed to withstand up to 20kV/10kA of transient line surge as per IEEE C62.41.2 C High. An in-line ferrite choke is utilized to provide pro-

Additional CCT emitters are available upon request.

LUMEN MAINTENANCE

Reported (TM21) and Calculated (L70) reports are available upon request with a minimum calculated value of 100,000 hrs.

WIRING

All internal wiring and connections shall be completed so that it will be necessary only to attach the incoming supply connectors to Mate-N-Lok connectors or to a terminal block. Mate-N-Lok shall be certified for 600V operation. Internal wire connectors shall be crimp connector only and rated at 1000V and 150°C. All wiring to be CSA certified and/or UL listed, type SFF-2, SEWF-2, or SEW-2 No. 14 gauge, 150°C, 600V, and color coded for the required voltage.

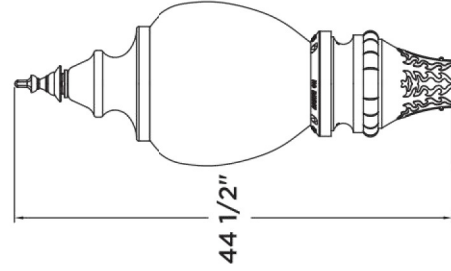
THERMALS

Fixtures tested by a DOE sanctioned test facility to determine the maximum in-situ solder-point or junction-point temperatures of the LED emitters. This report is available upon request.

FINISH

Housing is finished with a 13 step KingCoat™ SuperDurable polyester TGIC powder coat. Standard colors include strobe white, brown metal, marina blue, gate gray, Chicago bronze, standard gold, standard black, federal green and rain forest. Please see our website for a complete list of colors. RAL and custom color matches are available.

MISCELLANEOUS



CERTIFICATION:

CSA US Listed
Suitable for wet locations
ISO 9001

IP66
ARRA Compliant
LM79 / LM80 Compliant

DRIVER INFO:

>0.9 Power Factor
<20% Total Harmonic Distortion
120 - 277V & 347 - 480V
-40°C Min. Case Temperature
70°C Max. Case Temperature
Surge Protection: ANSI C136.2
extreme level 20kV/10kA

EPA:

1.53 sq. ft.

FIXTURE WEIGHT:

38 lbs

