

# Town of Simsbury

933 HOPMEADOW STREET

SIMSBURY, CONNECTICUT 06070

## BOARD OF SELECTMEN MEETING AGENDA SUBMISSION FORM

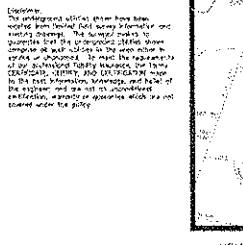
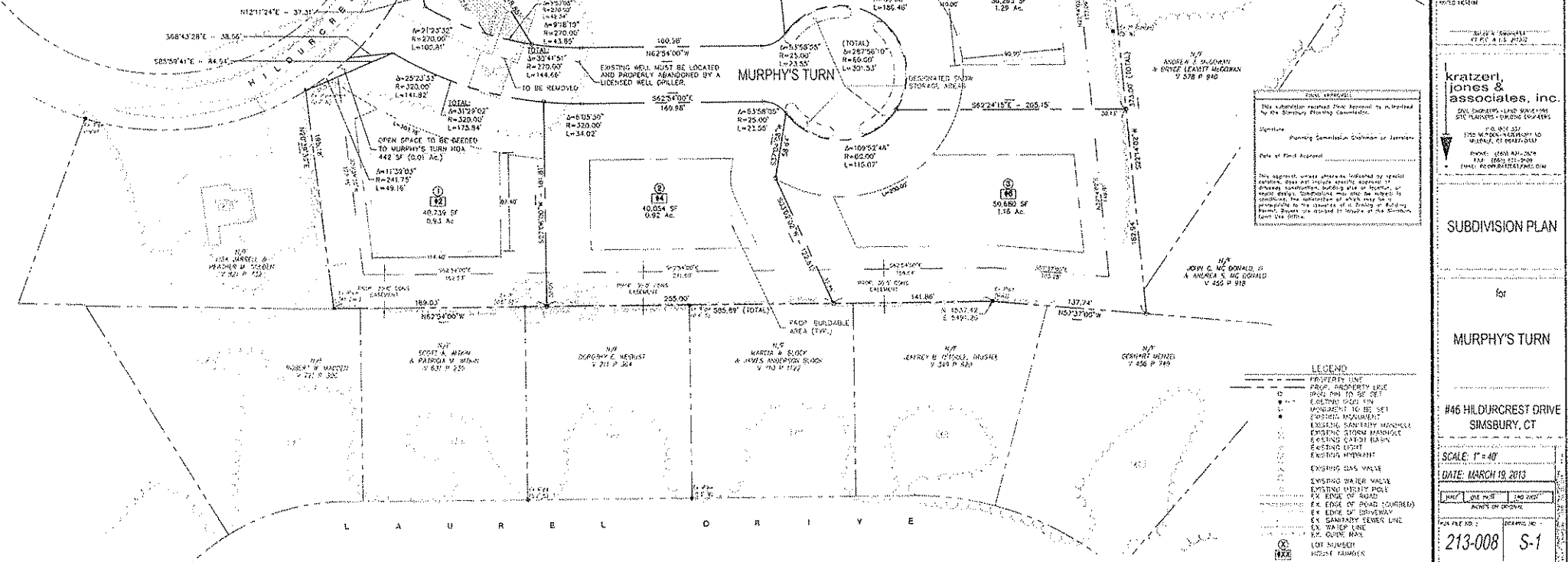
1. **Title of Submission:** Road Acceptance for Murphy's Turn
2. **Date of Board Meeting:** July 13, 2020
3. **Individual or Entity Making the Submission:**  
Maria E. Capriola, Town Manager; Jerome Shea, Town Engineer; Thomas Roy, Director of Public Works; Mike Glidden, Director of Planning and Community Development. *maria E. Capriola*
4. **Action Requested of the Board of Selectmen:**  
The next step in this process is for the Board of Selectmen to refer acceptance of the Murphy's Turn Roadway to the Planning Commission. The following motion is in order:  
  
*Move, effective July 13, 2020 to refer the acceptance of Murphy's Turn roadway to the Planning Commission pursuant to CGS 8-24.*
5. **Summary of Submission:**  
In 2013, the Planning Commission approved the subdivision of 46 Hildurcrest Drive. The plan called for the construction of 5 single family residences that would be served by a public road. 3 out of the 5 homes have been constructed.  
  
The developer has completed public improvements associated with the roadway and utilities. The roadway and associated improvements have been reviewed by town staff. After careful consideration, staff feels that the roadway is ready for acceptance by the Town of Simsbury.  
  
The Town Attorney has reviewed the deed for the roadway and utilities.
6. **Financial Impact:**  
None
7. **Description of Documents Included with Submission:**
  - a) Map of Subdivision

- DISCUSSION NOTES:**
1. THESE SURVEYS WERE MADE BY JOHN J. PATRICK, INC. IN 1962.
  2. ALL DIMENSIONS ARE IN FEET AND DECIMALS THEREOF.
  3. THE DIMENSIONS OF THE LOTS ARE AS SHOWN ON THIS PLAN.
  4. THE DIMENSIONS OF THE LOTS ARE AS SHOWN ON THIS PLAN.
  5. ALL LOTS TO BE DEEMED TO BE OPEN SPACE UNLESS OTHERWISE SPECIFIED.
  6. THE DIMENSIONS OF THE LOTS ARE AS SHOWN ON THIS PLAN.
  7. THE DIMENSIONS OF THE LOTS ARE AS SHOWN ON THIS PLAN.
  8. THE DIMENSIONS OF THE LOTS ARE AS SHOWN ON THIS PLAN.
  9. THE DIMENSIONS OF THE LOTS ARE AS SHOWN ON THIS PLAN.
  10. THE DIMENSIONS OF THE LOTS ARE AS SHOWN ON THIS PLAN.
  11. THE DIMENSIONS OF THE LOTS ARE AS SHOWN ON THIS PLAN.
  12. THE DIMENSIONS OF THE LOTS ARE AS SHOWN ON THIS PLAN.
  13. THE DIMENSIONS OF THE LOTS ARE AS SHOWN ON THIS PLAN.
  14. THE DIMENSIONS OF THE LOTS ARE AS SHOWN ON THIS PLAN.
  15. THE DIMENSIONS OF THE LOTS ARE AS SHOWN ON THIS PLAN.
  16. THE DIMENSIONS OF THE LOTS ARE AS SHOWN ON THIS PLAN.
  17. THE DIMENSIONS OF THE LOTS ARE AS SHOWN ON THIS PLAN.
  18. THE DIMENSIONS OF THE LOTS ARE AS SHOWN ON THIS PLAN.
  19. THE DIMENSIONS OF THE LOTS ARE AS SHOWN ON THIS PLAN.
  20. THE DIMENSIONS OF THE LOTS ARE AS SHOWN ON THIS PLAN.
  21. THE DIMENSIONS OF THE LOTS ARE AS SHOWN ON THIS PLAN.
  22. THE DIMENSIONS OF THE LOTS ARE AS SHOWN ON THIS PLAN.
  23. THE DIMENSIONS OF THE LOTS ARE AS SHOWN ON THIS PLAN.
  24. THE DIMENSIONS OF THE LOTS ARE AS SHOWN ON THIS PLAN.
  25. THE DIMENSIONS OF THE LOTS ARE AS SHOWN ON THIS PLAN.
  26. THE DIMENSIONS OF THE LOTS ARE AS SHOWN ON THIS PLAN.
  27. THE DIMENSIONS OF THE LOTS ARE AS SHOWN ON THIS PLAN.
  28. THE DIMENSIONS OF THE LOTS ARE AS SHOWN ON THIS PLAN.
  29. THE DIMENSIONS OF THE LOTS ARE AS SHOWN ON THIS PLAN.
  30. THE DIMENSIONS OF THE LOTS ARE AS SHOWN ON THIS PLAN.
  31. THE DIMENSIONS OF THE LOTS ARE AS SHOWN ON THIS PLAN.
  32. THE DIMENSIONS OF THE LOTS ARE AS SHOWN ON THIS PLAN.
  33. THE DIMENSIONS OF THE LOTS ARE AS SHOWN ON THIS PLAN.
  34. THE DIMENSIONS OF THE LOTS ARE AS SHOWN ON THIS PLAN.
  35. THE DIMENSIONS OF THE LOTS ARE AS SHOWN ON THIS PLAN.
  36. THE DIMENSIONS OF THE LOTS ARE AS SHOWN ON THIS PLAN.
  37. THE DIMENSIONS OF THE LOTS ARE AS SHOWN ON THIS PLAN.
  38. THE DIMENSIONS OF THE LOTS ARE AS SHOWN ON THIS PLAN.
  39. THE DIMENSIONS OF THE LOTS ARE AS SHOWN ON THIS PLAN.
  40. THE DIMENSIONS OF THE LOTS ARE AS SHOWN ON THIS PLAN.
  41. THE DIMENSIONS OF THE LOTS ARE AS SHOWN ON THIS PLAN.
  42. THE DIMENSIONS OF THE LOTS ARE AS SHOWN ON THIS PLAN.
  43. THE DIMENSIONS OF THE LOTS ARE AS SHOWN ON THIS PLAN.
  44. THE DIMENSIONS OF THE LOTS ARE AS SHOWN ON THIS PLAN.
  45. THE DIMENSIONS OF THE LOTS ARE AS SHOWN ON THIS PLAN.
  46. THE DIMENSIONS OF THE LOTS ARE AS SHOWN ON THIS PLAN.
  47. THE DIMENSIONS OF THE LOTS ARE AS SHOWN ON THIS PLAN.
  48. THE DIMENSIONS OF THE LOTS ARE AS SHOWN ON THIS PLAN.
  49. THE DIMENSIONS OF THE LOTS ARE AS SHOWN ON THIS PLAN.
  50. THE DIMENSIONS OF THE LOTS ARE AS SHOWN ON THIS PLAN.

| EXISTING WELLS |          |
|----------------|----------|
| WELL NO.       | DEPTH    |
| 1              | 100.00'  |
| 2              | 150.00'  |
| 3              | 200.00'  |
| 4              | 250.00'  |
| 5              | 300.00'  |
| 6              | 350.00'  |
| 7              | 400.00'  |
| 8              | 450.00'  |
| 9              | 500.00'  |
| 10             | 550.00'  |
| 11             | 600.00'  |
| 12             | 650.00'  |
| 13             | 700.00'  |
| 14             | 750.00'  |
| 15             | 800.00'  |
| 16             | 850.00'  |
| 17             | 900.00'  |
| 18             | 950.00'  |
| 19             | 1000.00' |

| OPEN SPACE DESIGNATIONS |                |       |
|-------------------------|----------------|-------|
| LOT NO.                 | AREA (SQ. FT.) | ACRES |
| 1                       | 10,000         | 0.23  |
| 2                       | 20,000         | 0.46  |
| 3                       | 30,000         | 0.69  |
| 4                       | 40,000         | 0.92  |
| 5                       | 50,000         | 1.15  |
| 6                       | 60,000         | 1.38  |
| 7                       | 70,000         | 1.61  |
| 8                       | 80,000         | 1.84  |
| 9                       | 90,000         | 2.07  |
| 10                      | 100,000        | 2.30  |
| 11                      | 110,000        | 2.53  |
| 12                      | 120,000        | 2.76  |
| 13                      | 130,000        | 2.99  |
| 14                      | 140,000        | 3.22  |
| 15                      | 150,000        | 3.45  |
| 16                      | 160,000        | 3.68  |
| 17                      | 170,000        | 3.91  |
| 18                      | 180,000        | 4.14  |
| 19                      | 190,000        | 4.37  |
| 20                      | 200,000        | 4.60  |
| 21                      | 210,000        | 4.83  |
| 22                      | 220,000        | 5.06  |
| 23                      | 230,000        | 5.29  |
| 24                      | 240,000        | 5.52  |
| 25                      | 250,000        | 5.75  |
| 26                      | 260,000        | 5.98  |
| 27                      | 270,000        | 6.21  |
| 28                      | 280,000        | 6.44  |
| 29                      | 290,000        | 6.67  |
| 30                      | 300,000        | 6.90  |
| 31                      | 310,000        | 7.13  |
| 32                      | 320,000        | 7.36  |
| 33                      | 330,000        | 7.59  |
| 34                      | 340,000        | 7.82  |
| 35                      | 350,000        | 8.05  |
| 36                      | 360,000        | 8.28  |
| 37                      | 370,000        | 8.51  |
| 38                      | 380,000        | 8.74  |
| 39                      | 390,000        | 8.97  |
| 40                      | 400,000        | 9.20  |
| 41                      | 410,000        | 9.43  |
| 42                      | 420,000        | 9.66  |
| 43                      | 430,000        | 9.89  |
| 44                      | 440,000        | 10.12 |
| 45                      | 450,000        | 10.35 |
| 46                      | 460,000        | 10.58 |
| 47                      | 470,000        | 10.81 |
| 48                      | 480,000        | 11.04 |
| 49                      | 490,000        | 11.27 |
| 50                      | 500,000        | 11.50 |
| 51                      | 510,000        | 11.73 |
| 52                      | 520,000        | 11.96 |
| 53                      | 530,000        | 12.19 |
| 54                      | 540,000        | 12.42 |
| 55                      | 550,000        | 12.65 |
| 56                      | 560,000        | 12.88 |
| 57                      | 570,000        | 13.11 |
| 58                      | 580,000        | 13.34 |
| 59                      | 590,000        | 13.57 |
| 60                      | 600,000        | 13.80 |
| 61                      | 610,000        | 14.03 |
| 62                      | 620,000        | 14.26 |
| 63                      | 630,000        | 14.49 |
| 64                      | 640,000        | 14.72 |
| 65                      | 650,000        | 14.95 |
| 66                      | 660,000        | 15.18 |
| 67                      | 670,000        | 15.41 |
| 68                      | 680,000        | 15.64 |
| 69                      | 690,000        | 15.87 |
| 70                      | 700,000        | 16.10 |
| 71                      | 710,000        | 16.33 |
| 72                      | 720,000        | 16.56 |
| 73                      | 730,000        | 16.79 |
| 74                      | 740,000        | 17.02 |
| 75                      | 750,000        | 17.25 |
| 76                      | 760,000        | 17.48 |
| 77                      | 770,000        | 17.71 |
| 78                      | 780,000        | 17.94 |
| 79                      | 790,000        | 18.17 |
| 80                      | 800,000        | 18.40 |
| 81                      | 810,000        | 18.63 |
| 82                      | 820,000        | 18.86 |
| 83                      | 830,000        | 19.09 |
| 84                      | 840,000        | 19.32 |
| 85                      | 850,000        | 19.55 |
| 86                      | 860,000        | 19.78 |
| 87                      | 870,000        | 20.01 |
| 88                      | 880,000        | 20.24 |
| 89                      | 890,000        | 20.47 |
| 90                      | 900,000        | 20.70 |
| 91                      | 910,000        | 20.93 |
| 92                      | 920,000        | 21.16 |
| 93                      | 930,000        | 21.39 |
| 94                      | 940,000        | 21.62 |
| 95                      | 950,000        | 21.85 |
| 96                      | 960,000        | 22.08 |
| 97                      | 970,000        | 22.31 |
| 98                      | 980,000        | 22.54 |
| 99                      | 990,000        | 22.77 |
| 100                     | 1,000,000      | 23.00 |

- MAP REFERENCES:**
1. REVISED MAP "MURPHY'S TURN" SECTION "A" PROPERTY OF JOHN J. PATRICK, INC. SCALE 1"=100' DATE: FEB. 1962.
  2. LAUREL HEIGHTS PROPERTY OF GEORGE W. FROBERG, INC. SECTION "B" PROPERTY OF JOHN J. PATRICK, INC. SCALE 1"=100' DATE: FEB. 1962.
  3. FINAL SUBDIVISION PLAN LAUREL HEIGHTS PROPERTY OF JOHN J. PATRICK, INC. SCALE 1"=100' DATE: FEB. 1962.



NOTES TO THESE PLANS BY OTHER OTHERS FOR ANY REASON SHALL BE VOID AND SHALL NOT BE CONSIDERED AS PART OF THESE PLANS.

**GENERAL NOTES:**

1. THE DIMENSIONS OF THE LOTS ARE AS SHOWN ON THIS PLAN.
2. THE DIMENSIONS OF THE LOTS ARE AS SHOWN ON THIS PLAN.
3. THE DIMENSIONS OF THE LOTS ARE AS SHOWN ON THIS PLAN.
4. THE DIMENSIONS OF THE LOTS ARE AS SHOWN ON THIS PLAN.
5. THE DIMENSIONS OF THE LOTS ARE AS SHOWN ON THIS PLAN.
6. THE DIMENSIONS OF THE LOTS ARE AS SHOWN ON THIS PLAN.
7. THE DIMENSIONS OF THE LOTS ARE AS SHOWN ON THIS PLAN.
8. THE DIMENSIONS OF THE LOTS ARE AS SHOWN ON THIS PLAN.
9. THE DIMENSIONS OF THE LOTS ARE AS SHOWN ON THIS PLAN.
10. THE DIMENSIONS OF THE LOTS ARE AS SHOWN ON THIS PLAN.
11. THE DIMENSIONS OF THE LOTS ARE AS SHOWN ON THIS PLAN.
12. THE DIMENSIONS OF THE LOTS ARE AS SHOWN ON THIS PLAN.
13. THE DIMENSIONS OF THE LOTS ARE AS SHOWN ON THIS PLAN.
14. THE DIMENSIONS OF THE LOTS ARE AS SHOWN ON THIS PLAN.
15. THE DIMENSIONS OF THE LOTS ARE AS SHOWN ON THIS PLAN.
16. THE DIMENSIONS OF THE LOTS ARE AS SHOWN ON THIS PLAN.
17. THE DIMENSIONS OF THE LOTS ARE AS SHOWN ON THIS PLAN.
18. THE DIMENSIONS OF THE LOTS ARE AS SHOWN ON THIS PLAN.
19. THE DIMENSIONS OF THE LOTS ARE AS SHOWN ON THIS PLAN.
20. THE DIMENSIONS OF THE LOTS ARE AS SHOWN ON THIS PLAN.
21. THE DIMENSIONS OF THE LOTS ARE AS SHOWN ON THIS PLAN.
22. THE DIMENSIONS OF THE LOTS ARE AS SHOWN ON THIS PLAN.
23. THE DIMENSIONS OF THE LOTS ARE AS SHOWN ON THIS PLAN.
24. THE DIMENSIONS OF THE LOTS ARE AS SHOWN ON THIS PLAN.
25. THE DIMENSIONS OF THE LOTS ARE AS SHOWN ON THIS PLAN.
26. THE DIMENSIONS OF THE LOTS ARE AS SHOWN ON THIS PLAN.
27. THE DIMENSIONS OF THE LOTS ARE AS SHOWN ON THIS PLAN.
28. THE DIMENSIONS OF THE LOTS ARE AS SHOWN ON THIS PLAN.
29. THE DIMENSIONS OF THE LOTS ARE AS SHOWN ON THIS PLAN.
30. THE DIMENSIONS OF THE LOTS ARE AS SHOWN ON THIS PLAN.
31. THE DIMENSIONS OF THE LOTS ARE AS SHOWN ON THIS PLAN.
32. THE DIMENSIONS OF THE LOTS ARE AS SHOWN ON THIS PLAN.
33. THE DIMENSIONS OF THE LOTS ARE AS SHOWN ON THIS PLAN.
34. THE DIMENSIONS OF THE LOTS ARE AS SHOWN ON THIS PLAN.
35. THE DIMENSIONS OF THE LOTS ARE AS SHOWN ON THIS PLAN.
36. THE DIMENSIONS OF THE LOTS ARE AS SHOWN ON THIS PLAN.
37. THE DIMENSIONS OF THE LOTS ARE AS SHOWN ON THIS PLAN.
38. THE DIMENSIONS OF THE LOTS ARE AS SHOWN ON THIS PLAN.
39. THE DIMENSIONS OF THE LOTS ARE AS SHOWN ON THIS PLAN.
40. THE DIMENSIONS OF THE LOTS ARE AS SHOWN ON THIS PLAN.
41. THE DIMENSIONS OF THE LOTS ARE AS SHOWN ON THIS PLAN.
42. THE DIMENSIONS OF THE LOTS ARE AS SHOWN ON THIS PLAN.
43. THE DIMENSIONS OF THE LOTS ARE AS SHOWN ON THIS PLAN.
44. THE DIMENSIONS OF THE LOTS ARE AS SHOWN ON THIS PLAN.
45. THE DIMENSIONS OF THE LOTS ARE AS SHOWN ON THIS PLAN.
46. THE DIMENSIONS OF THE LOTS ARE AS SHOWN ON THIS PLAN.
47. THE DIMENSIONS OF THE LOTS ARE AS SHOWN ON THIS PLAN.
48. THE DIMENSIONS OF THE LOTS ARE AS SHOWN ON THIS PLAN.
49. THE DIMENSIONS OF THE LOTS ARE AS SHOWN ON THIS PLAN.
50. THE DIMENSIONS OF THE LOTS ARE AS SHOWN ON THIS PLAN.
51. THE DIMENSIONS OF THE LOTS ARE AS SHOWN ON THIS PLAN.
52. THE DIMENSIONS OF THE LOTS ARE AS SHOWN ON THIS PLAN.
53. THE DIMENSIONS OF THE LOTS ARE AS SHOWN ON THIS PLAN.
54. THE DIMENSIONS OF THE LOTS ARE AS SHOWN ON THIS PLAN.
55. THE DIMENSIONS OF THE LOTS ARE AS SHOWN ON THIS PLAN.
56. THE DIMENSIONS OF THE LOTS ARE AS SHOWN ON THIS PLAN.
57. THE DIMENSIONS OF THE LOTS ARE AS SHOWN ON THIS PLAN.
58. THE DIMENSIONS OF THE LOTS ARE AS SHOWN ON THIS PLAN.
59. THE DIMENSIONS OF THE LOTS ARE AS SHOWN ON THIS PLAN.
60. THE DIMENSIONS OF THE LOTS ARE AS SHOWN ON THIS PLAN.
61. THE DIMENSIONS OF THE LOTS ARE AS SHOWN ON THIS PLAN.
62. THE DIMENSIONS OF THE LOTS ARE AS SHOWN ON THIS PLAN.
63. THE DIMENSIONS OF THE LOTS ARE AS SHOWN ON THIS PLAN.
64. THE DIMENSIONS OF THE LOTS ARE AS SHOWN ON THIS PLAN.
65. THE DIMENSIONS OF THE LOTS ARE AS SHOWN ON THIS PLAN.
66. THE DIMENSIONS OF THE LOTS ARE AS SHOWN ON THIS PLAN.
67. THE DIMENSIONS OF THE LOTS ARE AS SHOWN ON THIS PLAN.
68. THE DIMENSIONS OF THE LOTS ARE AS SHOWN ON THIS PLAN.
69. THE DIMENSIONS OF THE LOTS ARE AS SHOWN ON THIS PLAN.
70. THE DIMENSIONS OF THE LOTS ARE AS SHOWN ON THIS PLAN.
71. THE DIMENSIONS OF THE LOTS ARE AS SHOWN ON THIS PLAN.
72. THE DIMENSIONS OF THE LOTS ARE AS SHOWN ON THIS PLAN.
73. THE DIMENSIONS OF THE LOTS ARE AS SHOWN ON THIS PLAN.
74. THE DIMENSIONS OF THE LOTS ARE AS SHOWN ON THIS PLAN.
75. THE DIMENSIONS OF THE LOTS ARE AS SHOWN ON THIS PLAN.
76. THE DIMENSIONS OF THE LOTS ARE AS SHOWN ON THIS PLAN.
77. THE DIMENSIONS OF THE LOTS ARE AS SHOWN ON THIS PLAN.
78. THE DIMENSIONS OF THE LOTS ARE AS SHOWN ON THIS PLAN.
79. THE DIMENSIONS OF THE LOTS ARE AS SHOWN ON THIS PLAN.
80. THE DIMENSIONS OF THE LOTS ARE AS SHOWN ON THIS PLAN.
81. THE DIMENSIONS OF THE LOTS ARE AS SHOWN ON THIS PLAN.
82. THE DIMENSIONS OF THE LOTS ARE AS SHOWN ON THIS PLAN.
83. THE DIMENSIONS OF THE LOTS ARE AS SHOWN ON THIS PLAN.
84. THE DIMENSIONS OF THE LOTS ARE AS SHOWN ON THIS PLAN.
85. THE DIMENSIONS OF THE LOTS ARE AS SHOWN ON THIS PLAN.
86. THE DIMENSIONS OF THE LOTS ARE AS SHOWN ON THIS PLAN.
87. THE DIMENSIONS OF THE LOTS ARE AS SHOWN ON THIS PLAN.
88. THE DIMENSIONS OF THE LOTS ARE AS SHOWN ON THIS PLAN.
89. THE DIMENSIONS OF THE LOTS ARE AS SHOWN ON THIS PLAN.
90. THE DIMENSIONS OF THE LOTS ARE AS SHOWN ON THIS PLAN.
91. THE DIMENSIONS OF THE LOTS ARE AS SHOWN ON THIS PLAN.
92. THE DIMENSIONS OF THE LOTS ARE AS SHOWN ON THIS PLAN.
93. THE DIMENSIONS OF THE LOTS ARE AS SHOWN ON THIS PLAN.
94. THE DIMENSIONS OF THE LOTS ARE AS SHOWN ON THIS PLAN.
95. THE DIMENSIONS OF THE LOTS ARE AS SHOWN ON THIS PLAN.
96. THE DIMENSIONS OF THE LOTS ARE AS SHOWN ON THIS PLAN.
97. THE DIMENSIONS OF THE LOTS ARE AS SHOWN ON THIS PLAN.
98. THE DIMENSIONS OF THE LOTS ARE AS SHOWN ON THIS PLAN.
99. THE DIMENSIONS OF THE LOTS ARE AS SHOWN ON THIS PLAN.
100. THE DIMENSIONS OF THE LOTS ARE AS SHOWN ON THIS PLAN.

**GENERAL APPROVAL:**

This subdivision has been approved by the Planning Commission of the Town of Samsbury, Vermont.

Signature: \_\_\_\_\_

Date of Final Approval: \_\_\_\_\_

**kratzer, jones & associates, inc.**

200 EAST MAIN STREET  
SUNNYVALE, VERMONT 05488  
PHONE: (802) 885-1200  
FAX: (802) 885-1201

**SUBDIVISION PLAN**

for **MURPHY'S TURN**

**#46 HILDURCREST DRIVE SAMSBUURY, CT**

SCALE: 1"=40'

DATE: MARCH 19, 2013

213-008 S-1