



# SIMSBURY PEDESTRIAN AND BICYCLE MASTER PLAN

## Advisory Committee Meeting #3



Monday, January 22, 2018 | 5 PM



FITZGERALD & HALLIDAY, INC.  
Innovative Planning, Better Communities


COGENT



# MEETING AGENDA / PURPOSE

1. Welcome / Introductions
2. Advisory Committee Meeting #2 Recap
3. Recent Activities
4. Survey Results
5. Prize Drawing
6. Needs / Prioritization Activity
7. Next Steps





# WELCOME / INTRODUCTIONS

Google



# THE PROJECT TEAM

## Project lead



Town of Simsbury  
Public Works Department

## The Community!

### Advisory Committee



### The Public



## Consultant Team

Consultant lead:



With assistance from:

**COGENT**



# PROJECT PURPOSE

- Establish short and long term goals to improve upon the Town's pedestrian and bicycling infrastructure
- Develop recommendations to improve walking and bicycling facilities
- Make walking and bicycling safer and more convenient in Simsbury





# ADVISORY COMMITTEE

## Purpose

- Act as a liaison to the community about this project
- Provide insight and expertise on local conditions and issues
- Brainstorm ideas and concepts with the project team
- Review and comment on draft plan
- Support the consensus of this group within the community

WAYFINDING

# ADVISORY COMMITTEE MEETING #2 RECAP





# SIGNAGE & WAYFINDING

## 5 Requirements

1. Fulfill a need
2. Command attention
3. Convey clear, simple meaning
4. Command respect from road and trail users
5. Give adequate time for proper response







# LOCAL SIGNAGE

Current pedestrian & bike signage in Simsbury





# LOCAL SIGNAGE

Wayfinding signage  
plan for Simsbury?





# FEEDBACK FROM YOU

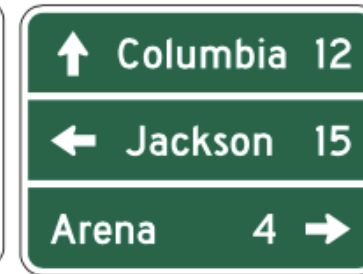
## Preferences



Type?



How much information?





# FEEDBACK FROM YOU

## Preferences



Part of a larger network?



Wayfinding / commercial establishments?





# FEEDBACK FROM YOU

## Preferences



Interpretive signage?



Other amenities?





# FEEDBACK FROM YOU

## Preferences



- **Share the road campaign**
- **Additional school programming (though sidewalks still ranked higher)**
- **Bicyclist traffic violations enforcement**



# RECENT ACTIVITIES



# POP UP OUTREACH EVENT #3

## Simsbury Public Library

- December 4<sup>th</sup>
- Had short conversations with 30 people
- Promoted online survey
- Asked what would encourage walking
  - Sidewalks
  - Crossings







# ONLINE SURVEY

- Closed survey on December 10<sup>th</sup>
- Compiled 883 results





# EXISTING CONDITIONS AND NEEDS

- Compiling information from:

- Pop up events



- Survey

- Advisory Committee



- Prior planning efforts



- Data



- Other

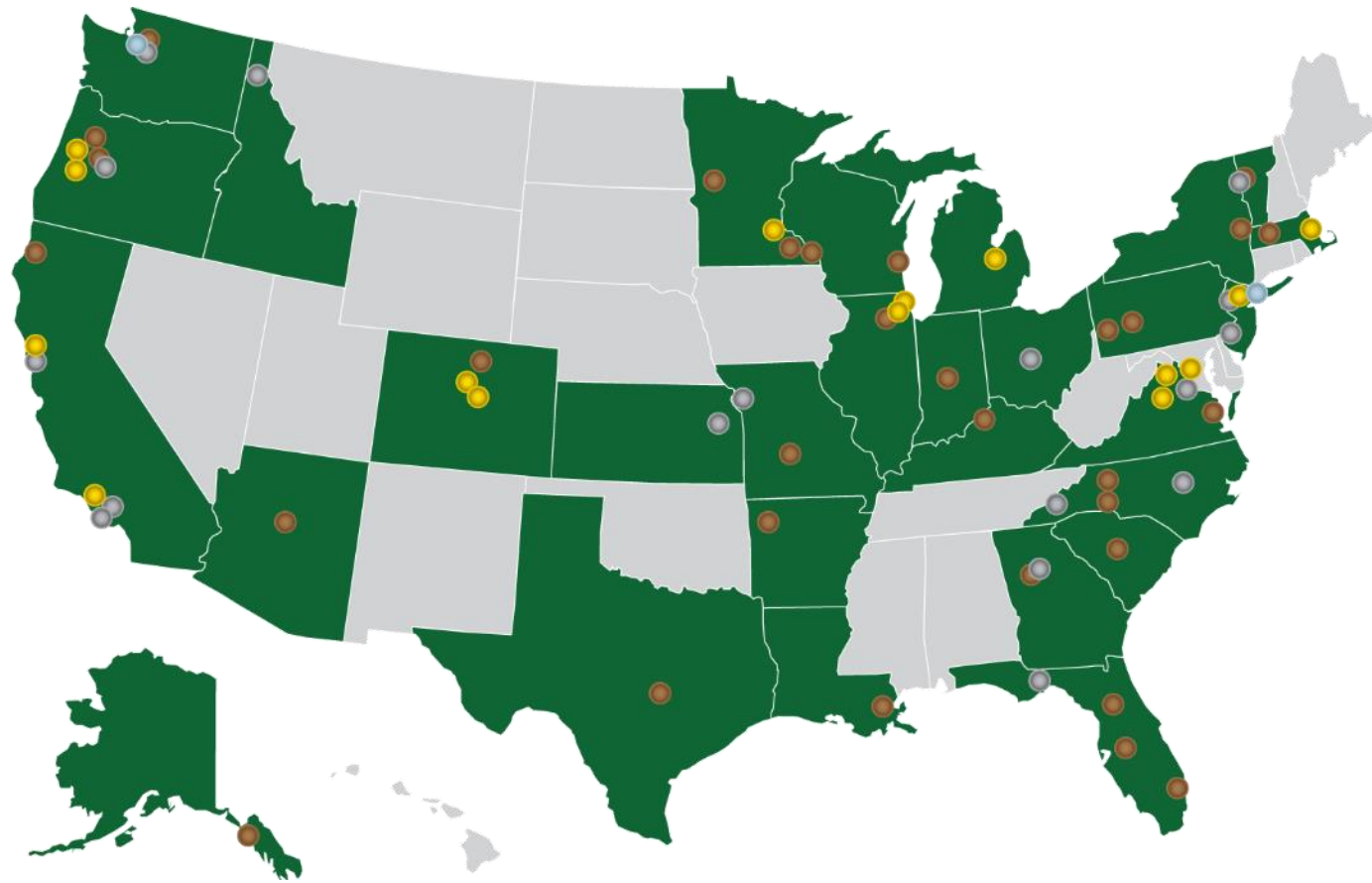




# WALK FRIENDLY COMMUNITY

## The Details

- Program began in 2011
- Bronze, Silver, Gold, or Platinum designation
- A number of cities have achieved gold and silver status
- No CT communities designated





# WALK FRIENDLY COMMUNITY

Example: Northampton, MA

- [Sustainable Northampton Comprehensive Plan](#) set walkability goals
- 2017 [Walk/Bike Northampton](#) plan expanded goals
- Two existing roundabouts, two in design
- Curb extensions, bicycle lanes, road narrowing, wider shoulders
- Pedestrian count program
- Accessory dwelling / density bonuses policies
- Police foot and bike patrols
- Paid / trained crossing guards at all elementary / middle schools
- 22.6 miles of linked trails, 12 miles planned

Population: **28,549**

Population Density: **836/sq. mi.**





# WALK FRIENDLY COMMUNITY

## What they look for

1. Community information, data, and evaluation
2. Planning and policy
3. Education and encouragement
4. Engineering and design
5. Law enforcement





# WALK FRIENDLY COMMUNITY

## Self Assessment Tool

- **COMMUNITY INFORMATION, DATA, AND EVALUATION**
  - Pedestrian coordination / dedicated staff
  - Guiding policy statement or strategy (e.g. Vision zero)
  - Nonmotorized count program
  - **Analysis of safety data**
- **PLANNING AND POLICY**
  - **Pedestrian plan with routine implementation tracking and review**
  - Targets for increased mode share and safety
  - Complete streets policy
- **EDUCATION AND ENCOURAGEMENT**
  - **Safe Routes to School Programs**
  - Public education or safety campaigns
  - Open Streets and other events

- **ENGINEERING AND DESIGN**
  - Sidewalk design and network coverage
  - Comprehensive design guidance
  - Formal traffic calming & speed management program
- **LAW ENFORCEMENT**
  - Dedicated traffic safety unit
  - Targeted pedestrian safety enforcement operations
  - Interdepartmental collaboration and cooperation

### WALK FRIENDLY COMMUNITIES SELF-ASSESSMENT

Many cities and towns are already developing and implementing the initiatives, policies, and programs recommended by the Walk Friendly Communities program. Using this checklist will help your community document existing activities, identify those areas where you can grow your programs, and put you on the path to develop a Walk Friendly Communities application. The items in the checklist represent some of the key components of a Walk Friendly Community, but they do not include all of the items in the full Community Assessment Tool.

To learn more and submit a full application, visit [www.walkfriendly.org](http://www.walkfriendly.org).

#### COMMUNITY INFORMATION, DATA AND EVALUATION

- Pedestrian coordinator/dedicated staff
- Guiding policy statement or strategy (e.g. Vision Zero)
- Nonmotorized count program
- Analysis of safety data



#### PLANNING AND POLICY

- Pedestrian plan with routine implementation tracking and review
- Targets for increased mode share and safety
- Complete streets policy

#### EDUCATION AND ENCOURAGEMENT

- Safe Routes to School programs
- Public education and safety campaigns
- Open Streets and other events

#### ENGINEERING AND DESIGN

- Sidewalk design and network coverage
- Comprehensive design guidance
- Formal traffic calming and speed management program

#### LAW ENFORCEMENT

- Dedicated traffic safety unit
- Targeted pedestrian safety enforcement operations
- Interdepartmental collaboration and cooperation

"Our city takes pride in recognition of the work that we do by organizations such as Walk Friendly Communities. Putting our city in the national conversation of multimodal planning played a role in City Council choosing to continue funding pedestrian projects at a high level..."

— Walk Friendly Community: Charlotte, North Carolina



# WALK FRIENDLY COMMUNITY

## Self Assessment Tool

- **COMMUNITY INFORMATION, DATA, AND EVALUATION**

- Pedestrian coordination / dedicated staff
- Guiding policy statement or strategy (e.g. Vision zero)
- Nonmotorized count program
- **Analysis of safety data**

- **PLANNING AND POLICY**

- **Pedestrian plan with routine implementation tracking and review**
- Targets for increased mode share and safety
- Complete streets policy

- **EDUCATION AND ENCOURAGEMENT**

- **Safe Routes to School Programs**
- Public education or safety campaigns
- Open Streets and other events

- **ENGINEERING AND DESIGN**

- Sidewalk design and network coverage
- Comprehensive design guidance
- Formal traffic calming & speed management program

- **LAW ENFORCEMENT**

- Dedicated traffic safety unit
- Targeted pedestrian safety enforcement operations
- Interdepartmental collaboration and cooperation

**SIMSBURY**

**There!**



# WALK FRIENDLY COMMUNITY

## Self Assessment Tool

- **COMMUNITY INFORMATION, DATA, AND EVALUATION**

- Pedestrian coordination / dedicated staff
- Guiding policy statement or strategy (e.g. Vision zero)
- Nonmotorized count program
- Analysis of safety data

- **PLANNING AND POLICY**

- Pedestrian plan with routine implementation tracking and review
- Targets for increased mode share and safety
- Complete streets policy

- **EDUCATION AND ENCOURAGEMENT**

- Safe Routes to School Programs
- Public education or safety campaigns
- Open Streets and other events

- **ENGINEERING AND DESIGN**

- Sidewalk design and network coverage
- Comprehensive design guidance
- Formal traffic calming & speed management program

- **LAW ENFORCEMENT**

- Dedicated traffic safety unit
- Targeted pedestrian safety enforcement operations
- Interdepartmental collaboration and cooperation

## SIMSBURY

There!

Almost there





# WALK FRIENDLY COMMUNITY

## Self Assessment Tool

- **COMMUNITY INFORMATION, DATA, AND EVALUATION**

- Pedestrian coordination / dedicated staff
- Guiding policy statement or strategy (e.g. Vision zero)
- Non-motorized count program
- Analysis of safety data

- **PLANNING AND POLICY**

- Pedestrian plan with routine implementation tracking and review
- Targets for increased mode share and safety
- Complete streets policy

- **EDUCATION AND ENCOURAGEMENT**

- Safe Routes to School Programs
- Public education or safety campaigns
- Open Streets and other events

- **ENGINEERING AND DESIGN**

- Sidewalk design and network coverage
- Comprehensive design guidance
- Formal traffic calming & speed management program

- **LAW ENFORCEMENT**

- Dedicated traffic safety unit
- Targeted pedestrian safety enforcement operations
- Interdepartmental collaboration and cooperation

## SIMSBURY

There!

Almost there

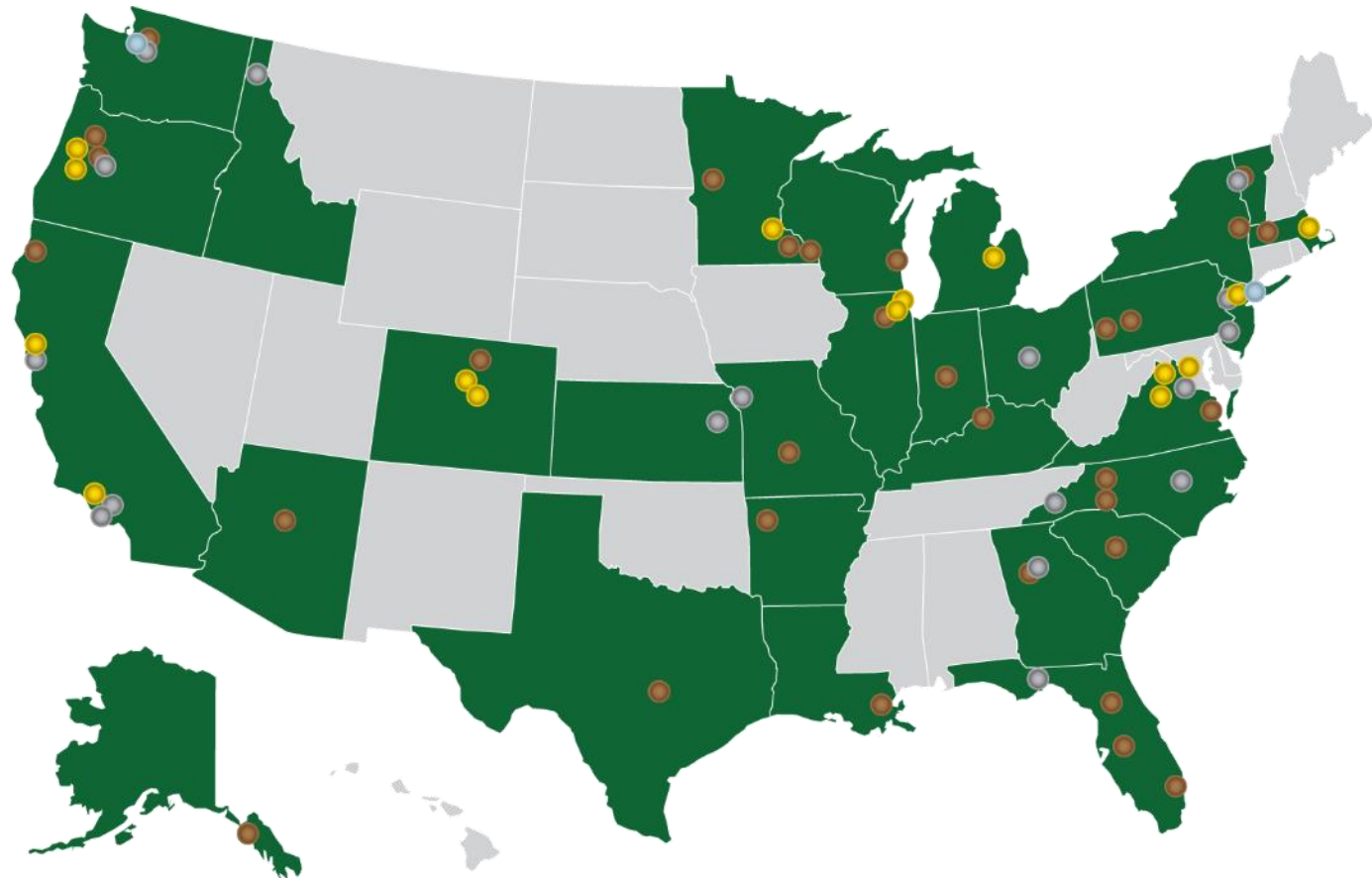
Needs consideration



# WALK FRIENDLY COMMUNITY

## More Information

- Applications accepted 2X per year (June, December)
- <http://walkfriendly.org/apply/>



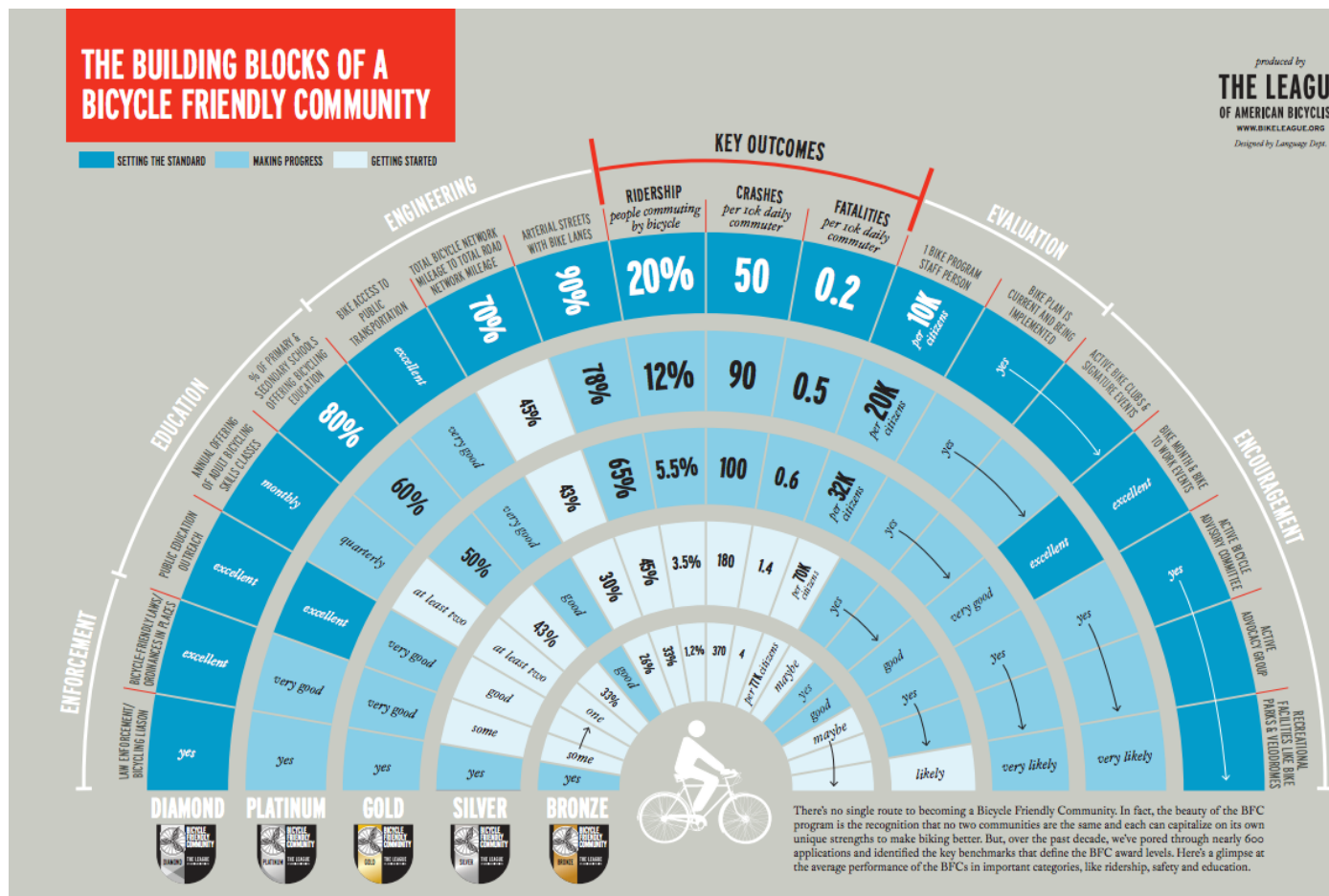


# BICYCLE FRIENDLY COMMUNITY STATUS

## Is Gold Feasible?

There!

- Host bike commuter challenge
- Update bike plan
- Evaluate bicycle crash statistics



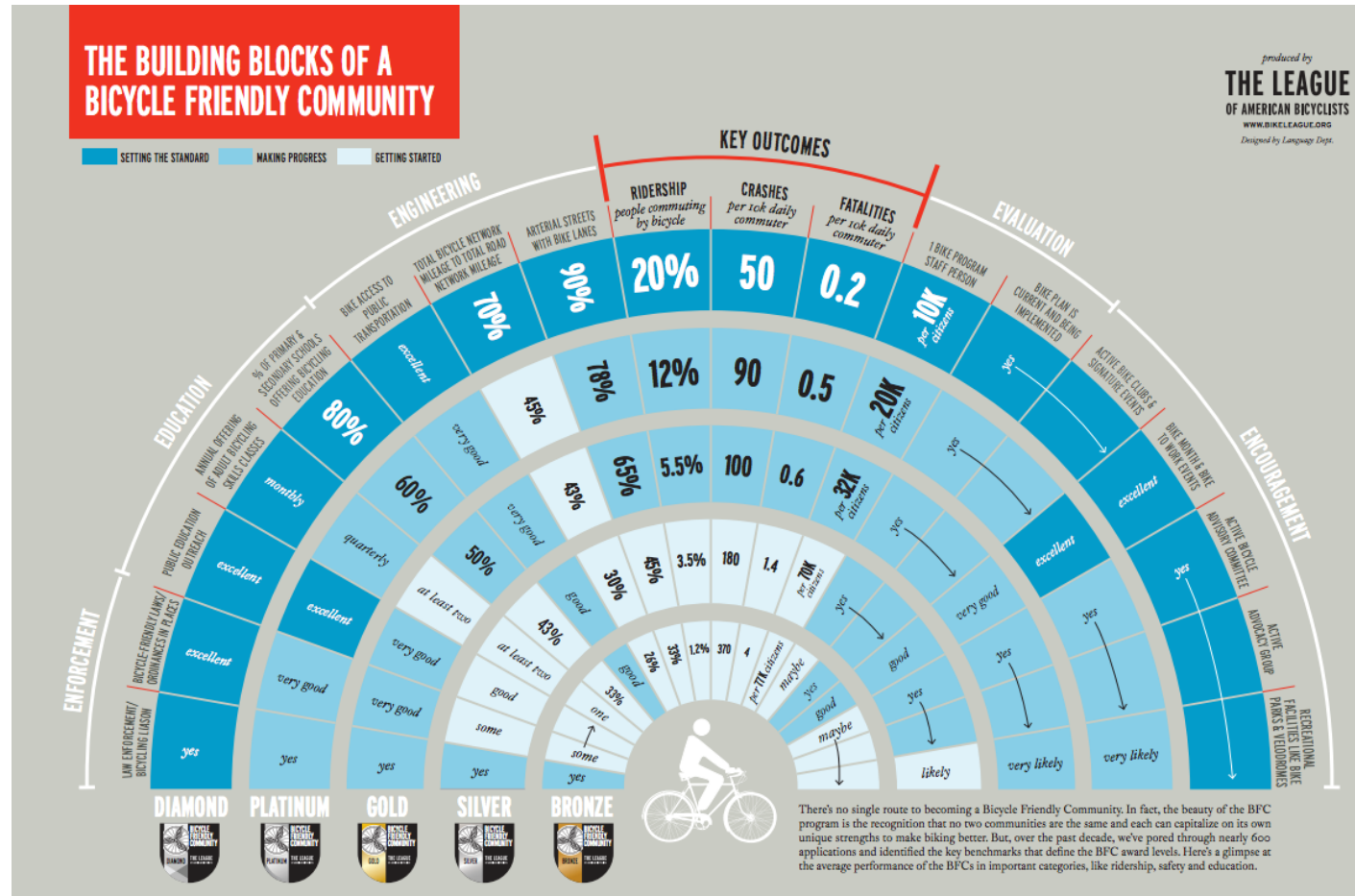


# BICYCLE FRIENDLY COMMUNITY STATUS

## Is Gold Feasible?

### Somewhat there:

- Complete Streets policy and implementation guidance
- Increase bicycle parking
- Continue to expand the on-road bicycle network and connections
- Offer short, family-oriented, community, or social rides



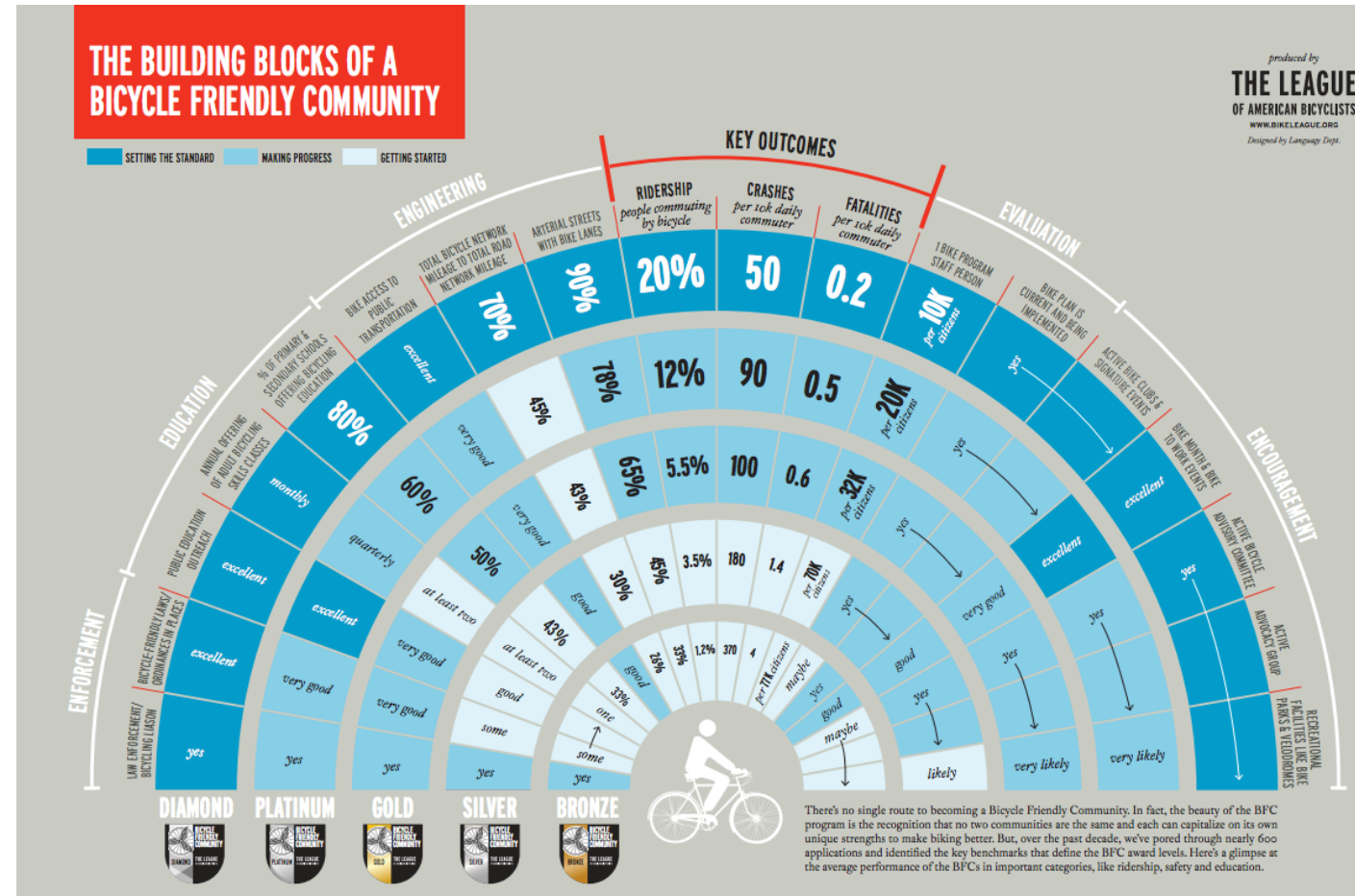


# BICYCLE FRIENDLY COMMUNITY STATUS

## Is Gold Feasible?

### Consider:

- Bicycle parking standards that conform to APBP
- Bicycle commuter classes
- Businesses promotion of cycling to employees and patrons
- Police enforcement for bicycle related infractions (for cyclists and motorists)



# SURVEY RESULTS



# ONLINE SURVEY

- Ran September 27<sup>th</sup> - December 10<sup>th</sup>
- Issues and opportunities for walking and bicycling
- 883 people completed the survey
  - 66% provided their zip code
  - Of these, 90% were Simsbury residents

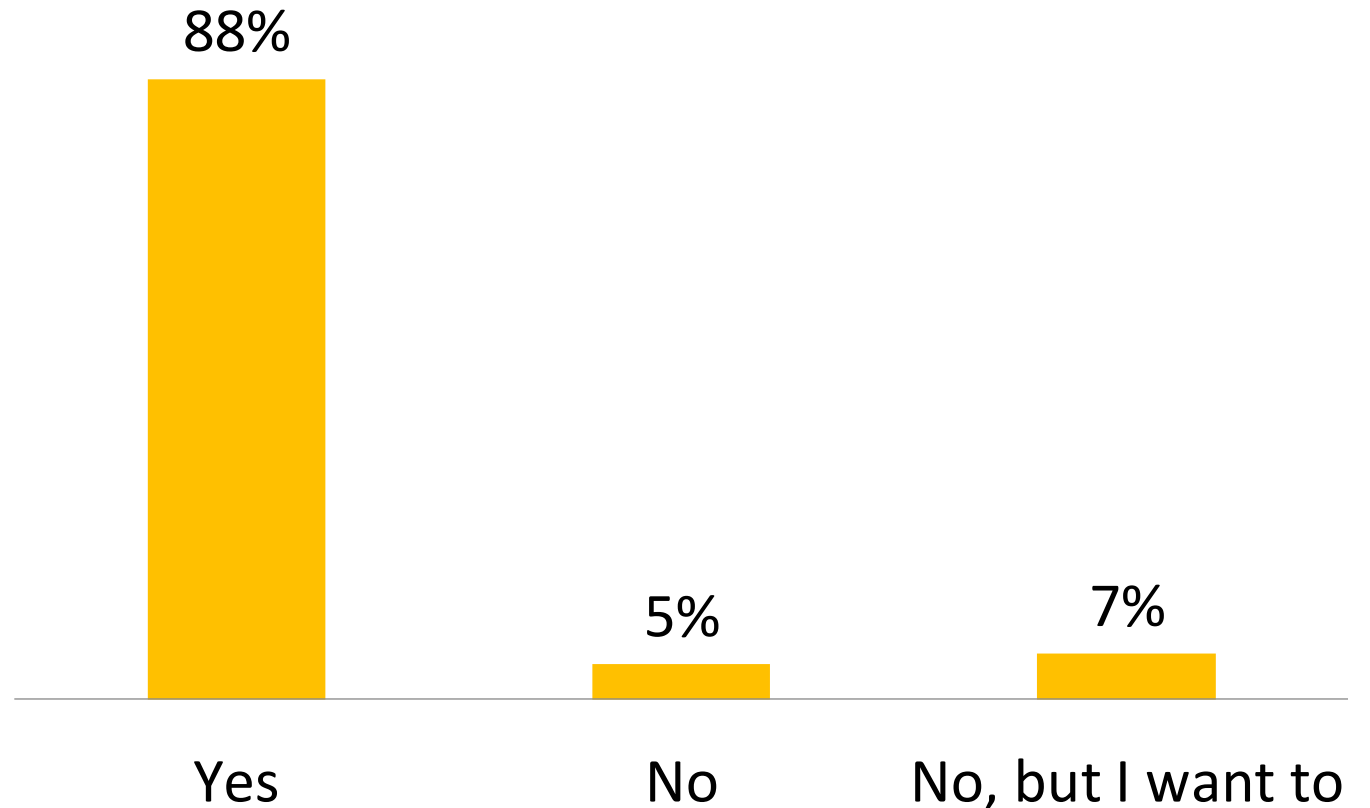




# ONLINE SURVEY HIGHLIGHTS

## Do you walk, run, or bicycle on the trails in Simsbury?

- 88% walk or bicycle on the trails in Simsbury
- Of the 12% that do not:
  - Crime/personal safety (27%)
  - Can't easily access (19%)
  - Not interested (19%)

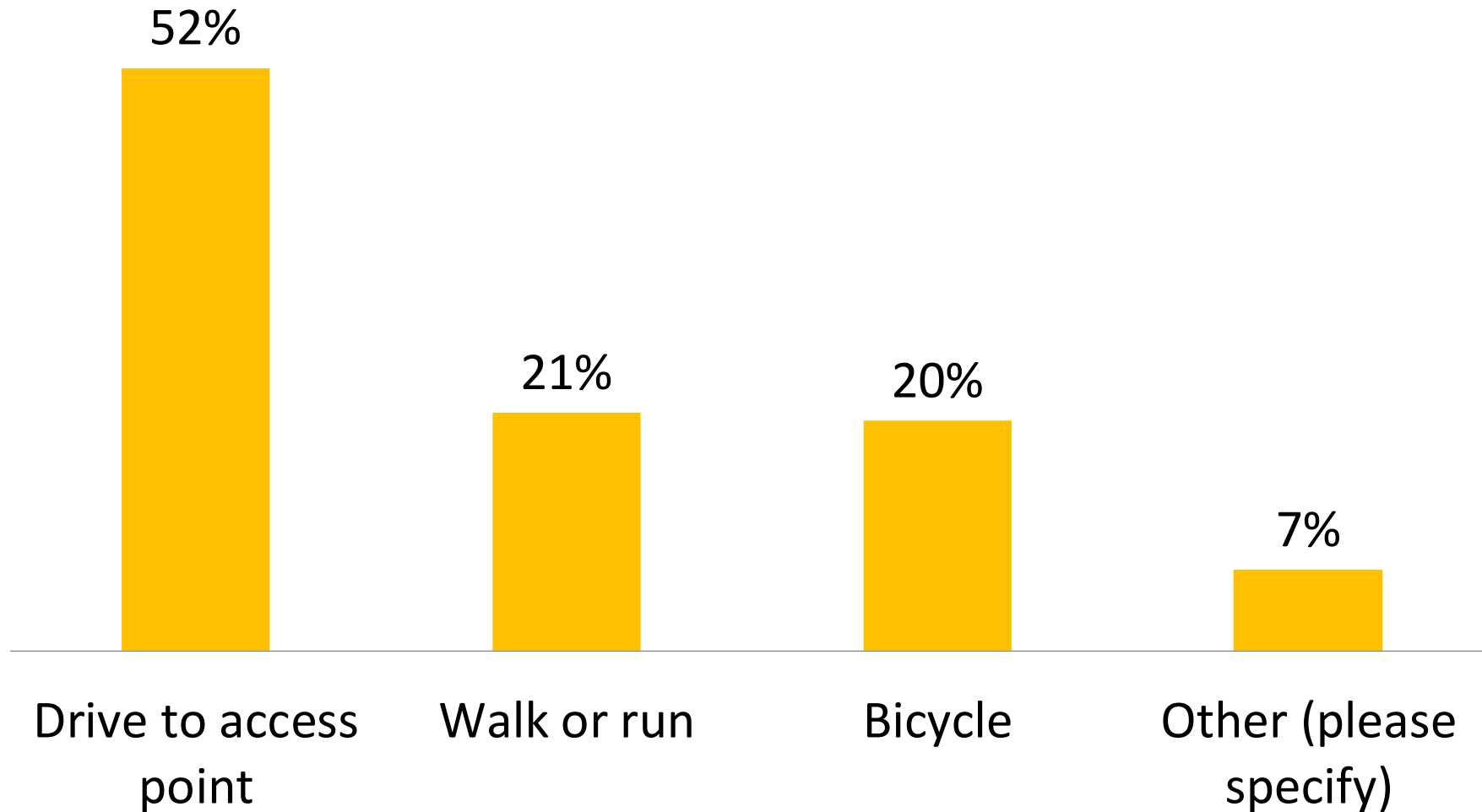






# ONLINE SURVEY HIGHLIGHTS

## How do you typically access Simsbury's trails?

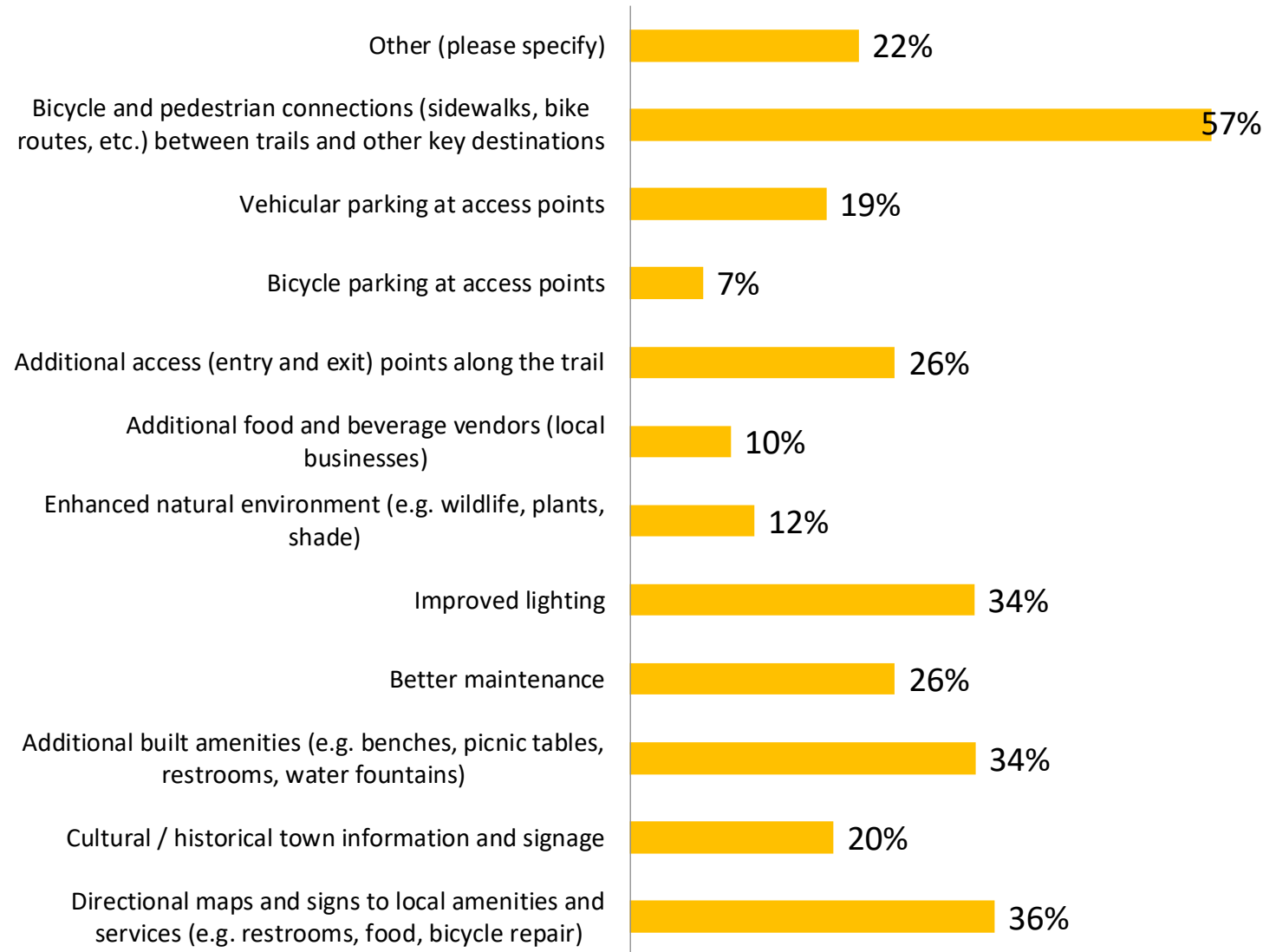




# ONLINE SURVEY HIGHLIGHTS

What types of improvements would encourage you to use the trails more?  
(select up to five responses)

- Bicycle and pedestrian connections between trails and other destinations (57%)
- Directional maps and signage (36%)
- Additional built amenities on trail (34%)
- Improve lighting (34%)



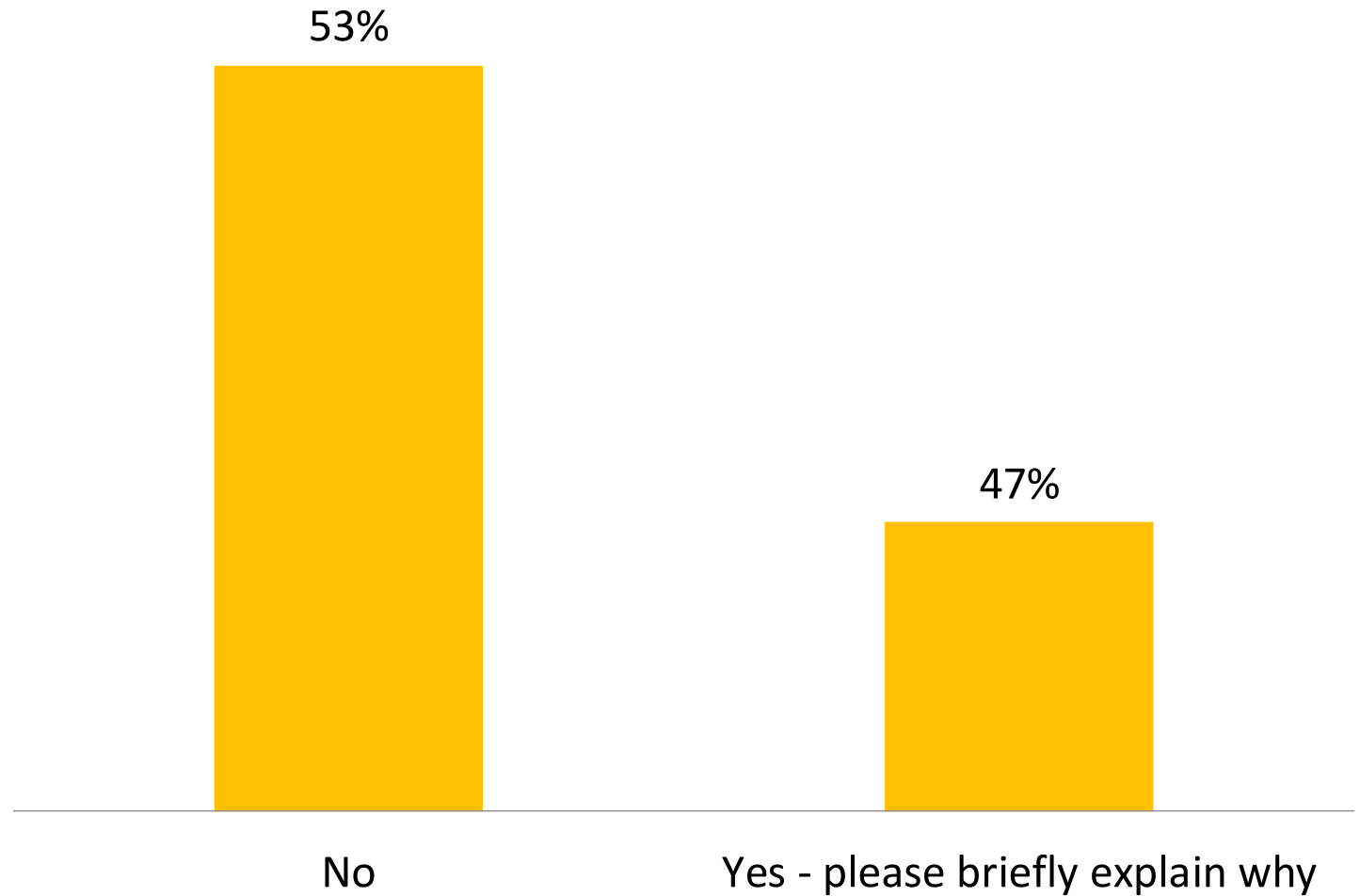


# ONLINE SURVEY HIGHLIGHTS

Do you feel unsafe for any reason while walking along Simsbury's roads or within its shopping centers?

- Reason why not include:

- Distracted drivers
- High vehicular speeds
- Narrow shoulders
- No sidewalks
- Inadequate lighting
- Wildlife encounters
- Crime





# ONLINE SURVEY HIGHLIGHTS

## Pedestrian Safety – A Snapshot of Responses

### Lack of sidewalks

“Lack of sidewalks or pathways or even adequately wide shoulders on any of the roads...”

“...many busy roadways outside town center lack sidewalks or marked shoulders.”

### No lighting

“Poor or inconsistent lighting makes me feel unsafe...especially at dusk or at night.”

“Lighting is terrible however one of the charms of Simsbury is that there are not street lights everywhere.”

### Conflicts with other modes

“Cars fly by...even along curvy, windy roads!...I always assume they are also distracted.”

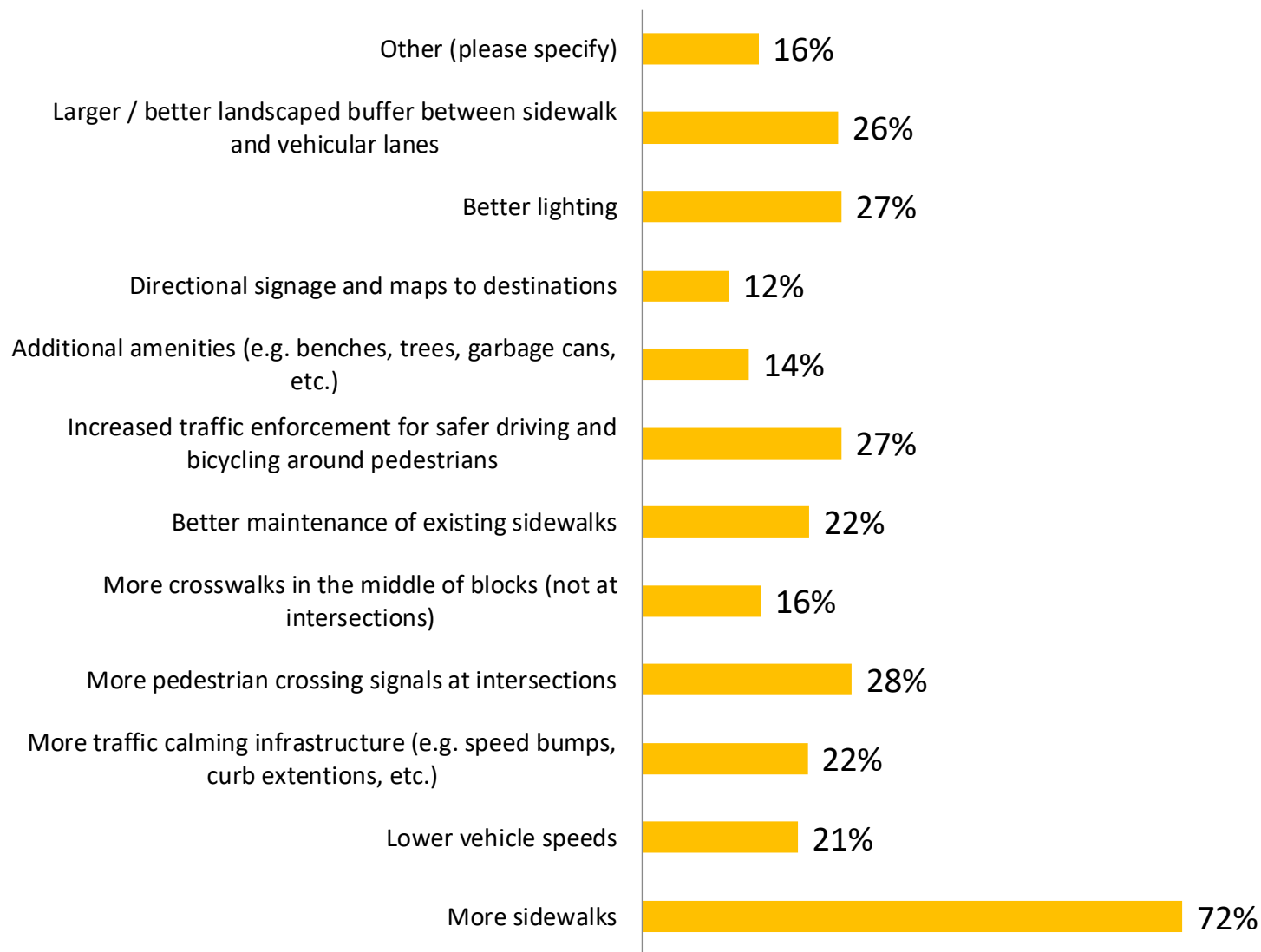
“Bikes use sidewalks even when there are bike lanes.”



# ONLINE SURVEY HIGHLIGHTS

What types of improvements would encourage you to walk alongside Simsbury's roads more? (select up to five responses)

- More sidewalks (72%)
- More pedestrian crossing signals at intersections (28%)
- Better lighting (27%)
- Increased traffic enforcement (27%)



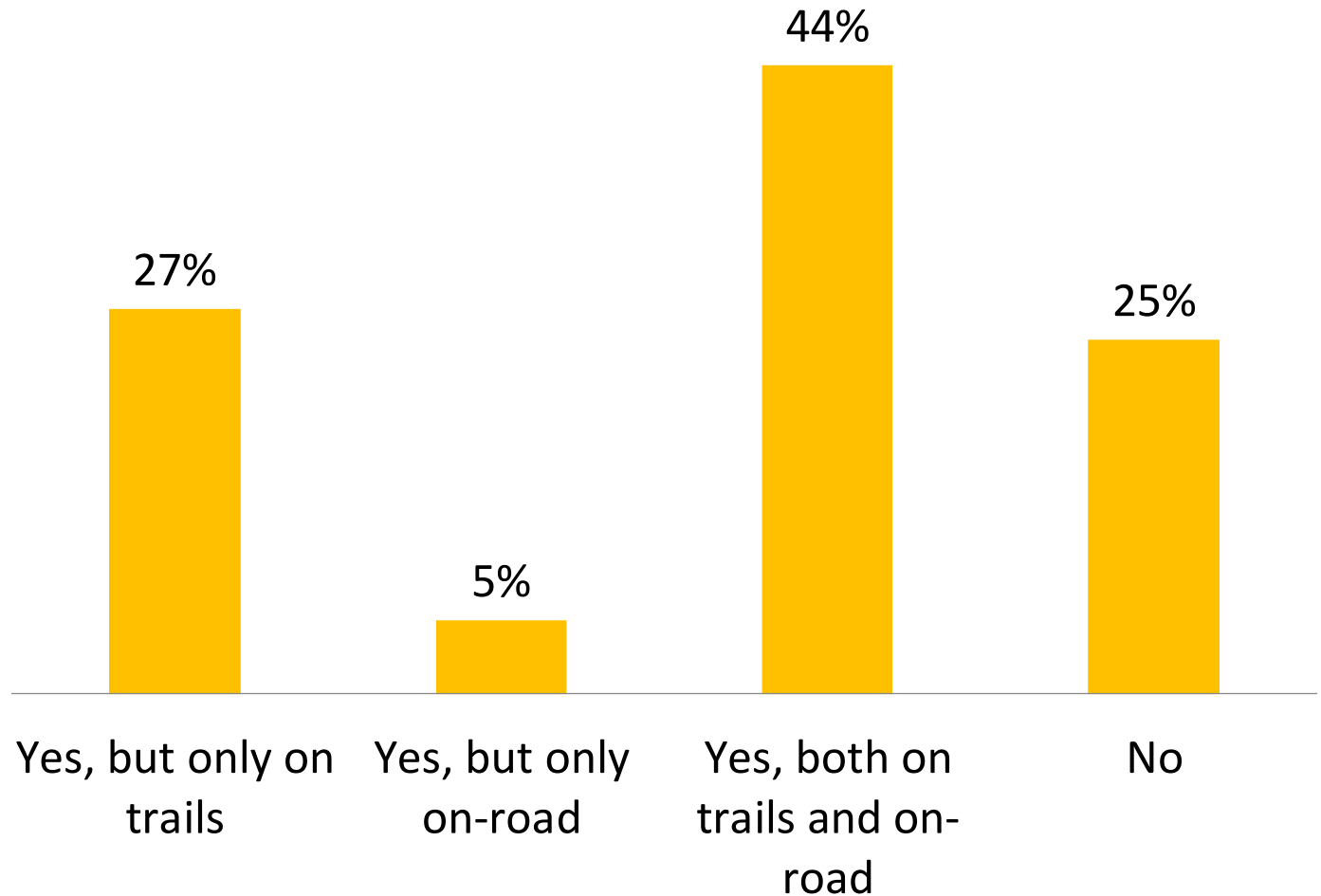


# ONLINE SURVEY HIGHLIGHTS

## Bicycling on Simsbury's roads

- Reason why cyclists are not on the roads:

- Safety / security (52%)
- Too much traffic (36%)

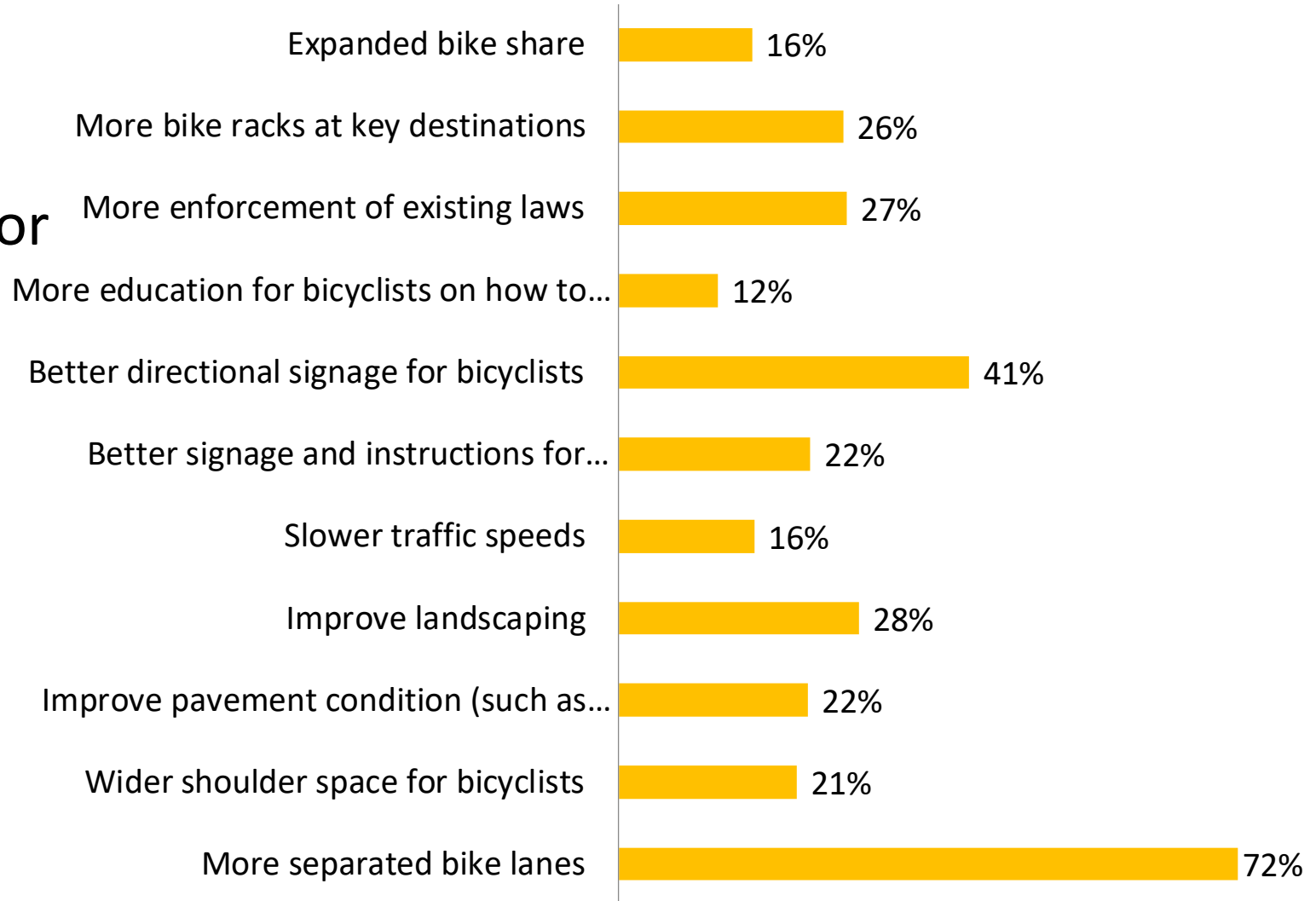




# ONLINE SURVEY HIGHLIGHTS

What types of improvements would encourage you to bicycle on roadways in Simsbury more? (select up to five responses)

- More separated bike lanes (72%)
- Better directional signage for bicyclists (41%)



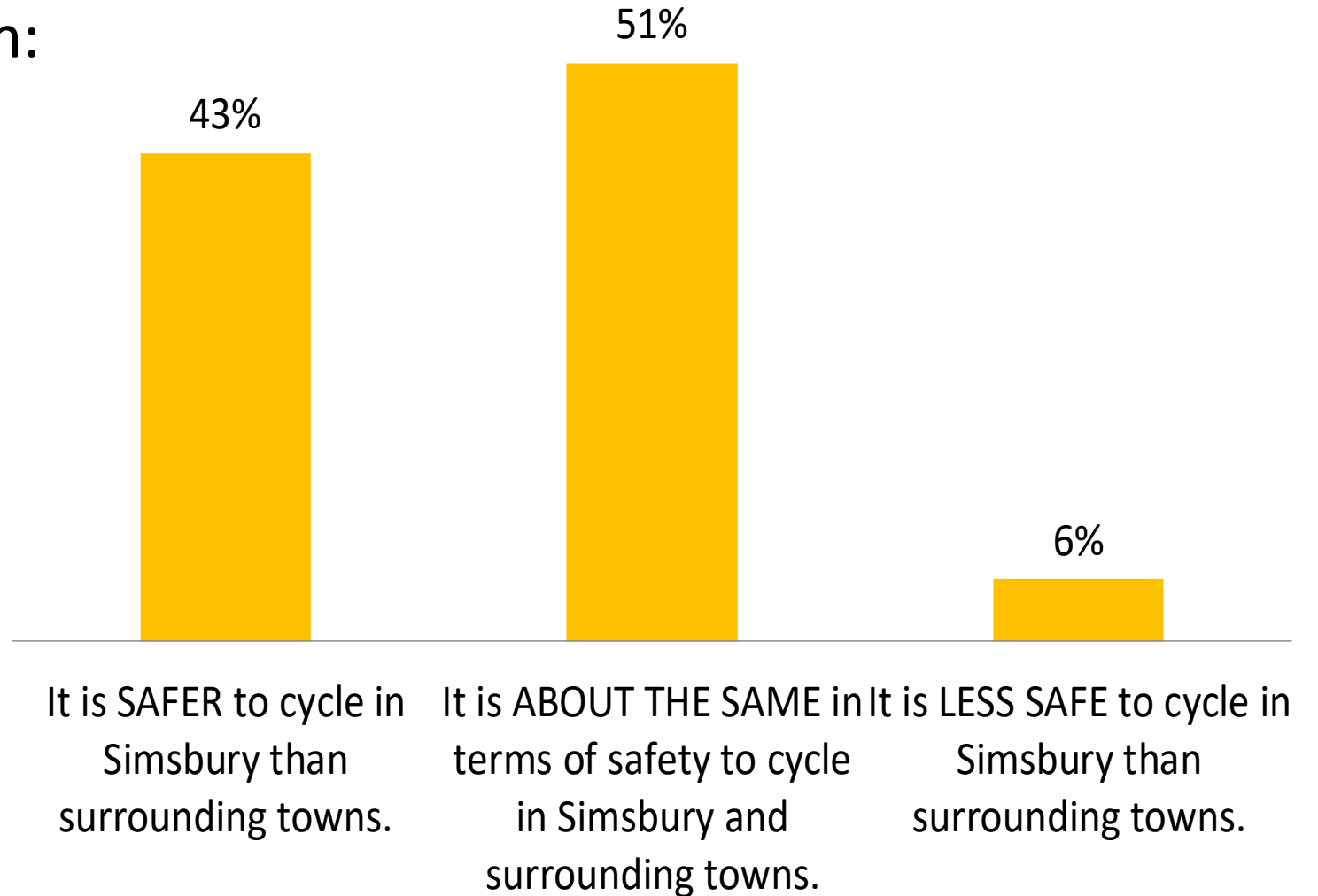


# ONLINE SURVEY HIGHLIGHTS

Please indicate whether you feel cycling in Simsbury is safer, the same or less safe than surrounding towns?

- Other safe towns to cycle in:

- Granby
- Canton
- Avon



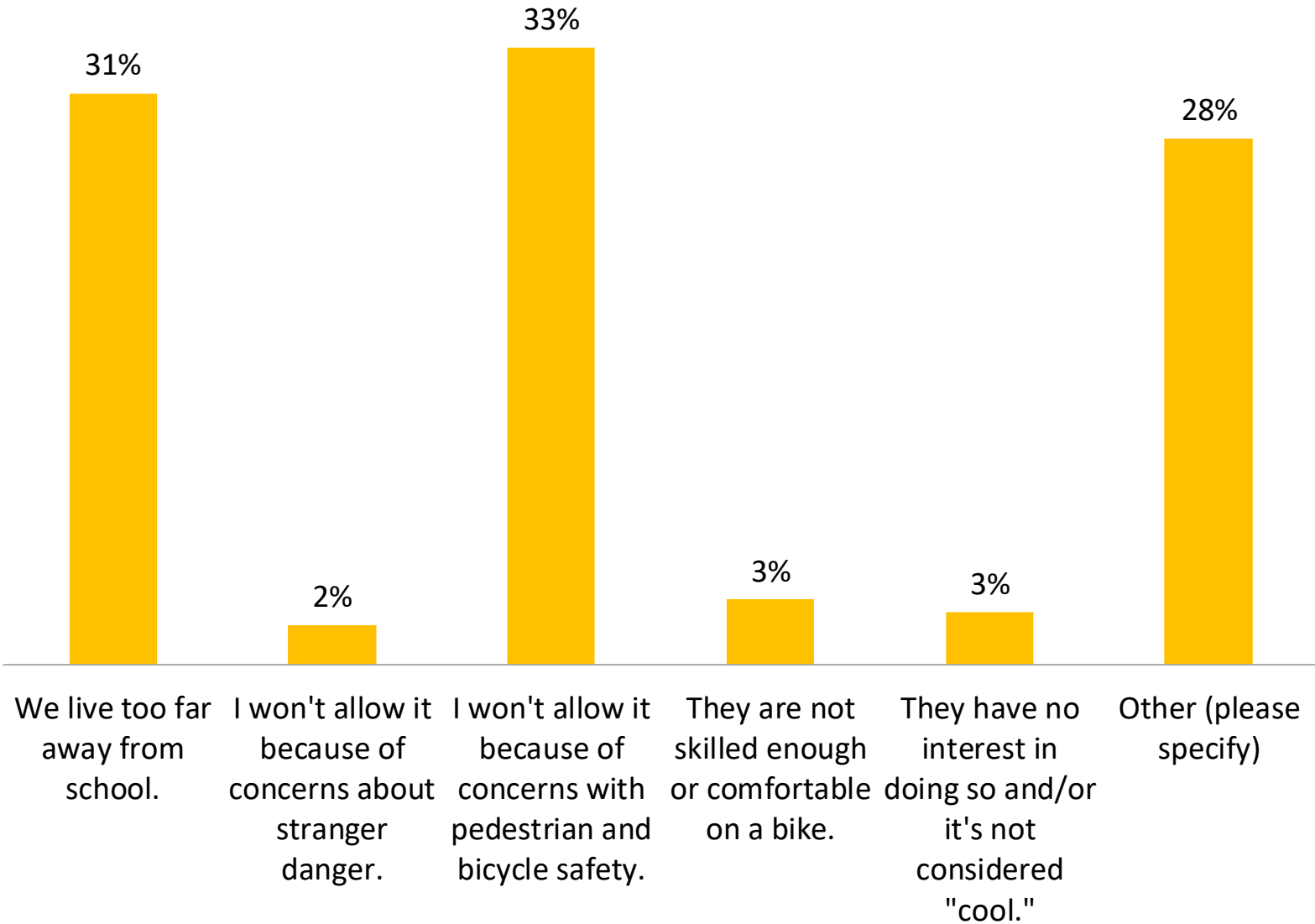




# ONLINE SURVEY HIGHLIGHTS

## Walking and bicycling to school

- 31% of those with school age children have their children walk to school
- Reasons why not:
  - Safety (33%)
  - Distance (31%)

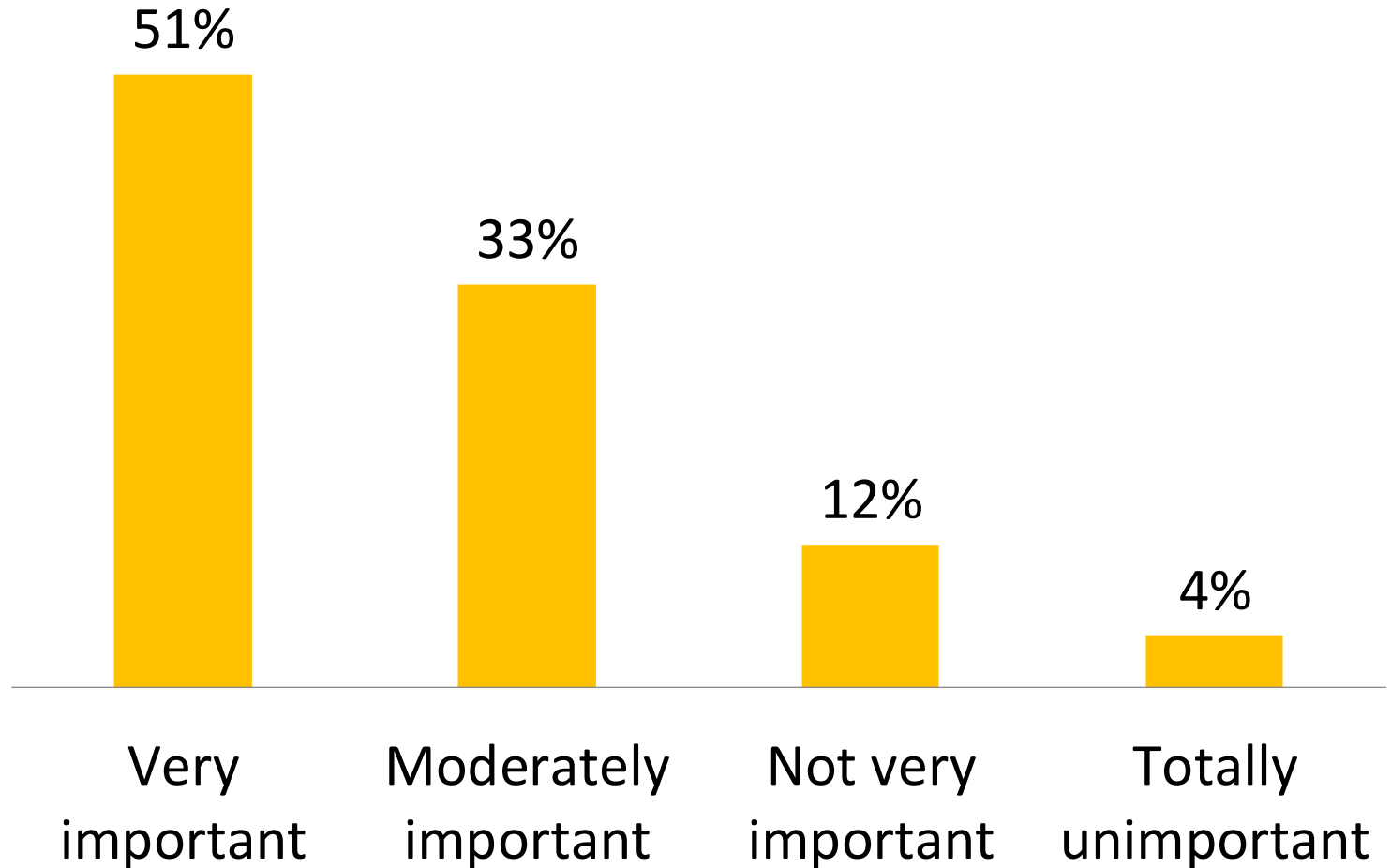




# ONLINE SURVEY HIGHLIGHTS

Bicycle-Friendly Community

How important is it to you that Simsbury continue to become even more walkable and bikeable?



NEW HAVEN-NORTHAMPTON  
RAILROAD  
THE CANAL LINE

# PRIZE DRAWING





# THANKS TO OUR GENEROUS DONATIONS!

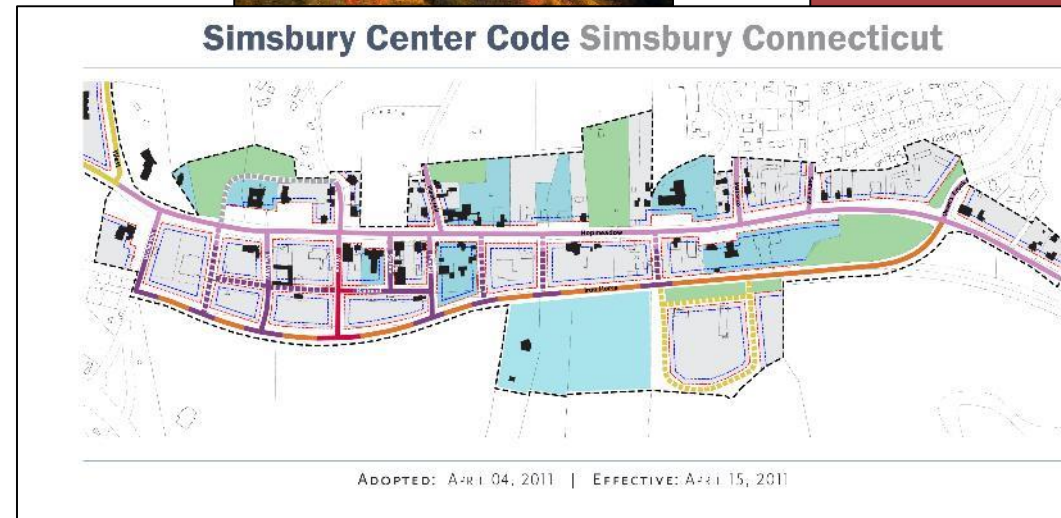
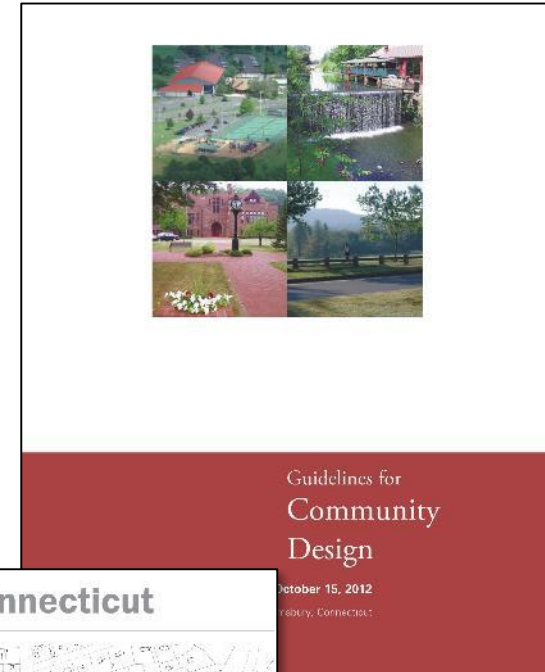
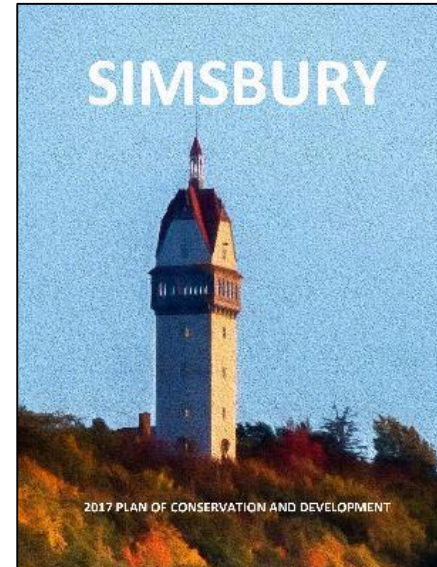




# POLICIES AND PROGRAMS

## Current

- Complete streets resolution
- Guidelines for community design
- Route 10 corridor study
- Comprehensive plan
- Plan of conservation and development
- Simsbury form-based code





# POLICIES AND PROGRAMS

## Current

- 4th grade bike ed
- Bike / walk to school day
- Adult bike skills education
- "Positive ticketing" for kids





# POLICIES AND PROGRAMS

## Needs

- Strengthen Complete Streets
- Elderly and disabled needs





# POLICIES AND PROGRAMS

## Complete Streets Ordinance

2016 Complete Streets Resolution:

- Complete Streets is important to Simsbury
- Will strive where practical and economically feasible to incorporate Complete Streets elements into projects
- May update, processes, policies, procedures, manuals

***How does Simsbury compare to neighboring communities?***







# POLICIES AND PROGRAMS

## Complete Streets Ordinance

### ***What value will an ordinance add?***

- Must consider...
- Required to update...
- Additional recognition

### ***At what cost?***

- Human resources
- Prioritizing the pedestrian and bicycle projects that move forward
- Changes may disproportionately coincide with development



# POLICIES AND PROGRAMS

## Sample Recommendations

- Develop / implement a complete streets ordinance
- Expand youth bike education
- Examine signal timing





# NETWORK AND FACILITIES

When thinking about recommendations...

## 1) WHERE should facilities go? → Network Recommendations

- Fill in the gaps
- Make connections



## 2) WHAT should go there? → Facilities Recommendations

- Best practices
- New sidewalk or improved sidewalk?
- Bike parking, streetscape amenities, water fountains, etc.





# NETWORK NEEDS ASSESSMENT

## Methodology

### WE HEARD YOU!



- Step One (and the basis of the network identification)
  - *Weighted Engagement Score*

Old Farms Road

I think from Squadron Line school on Hoskins up to Route 10 is a terrible road. Sidewalk or bike lane would benefit a lot of people.

Between County Road and Squadron Line

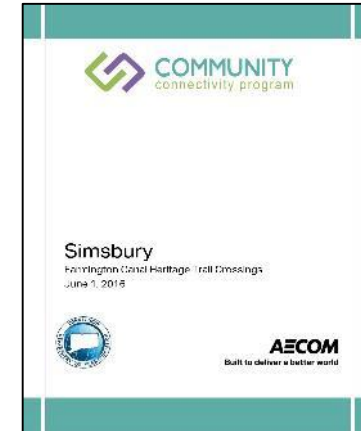




# NETWORK NEEDS ASSESSMENT

## Considerations

- POCD
- Other town plan / study
- Bicycle / pedestrian crash location
- ½ mile of school
- ½ mile of park, recreational area or trail
- ½ mile of retail / cultural hub
- High Strava ridership
- Regional bike map
- Statewide bike map





# NETWORK NEEDS ASSESSMENT

## Methodology – Weighted Considerations

- Engagement score
- Included in POCD
- Included in other town plan or study
- Crash location that involved a bicyclist or pedestrian
- Within ½ mile of school
- Within ½ mile of park, recreational area or trail
- Within ½ mile of retail / cultural hub
- High number of strava users
- Regional bike map & Statewide bike map



**What do you think?**



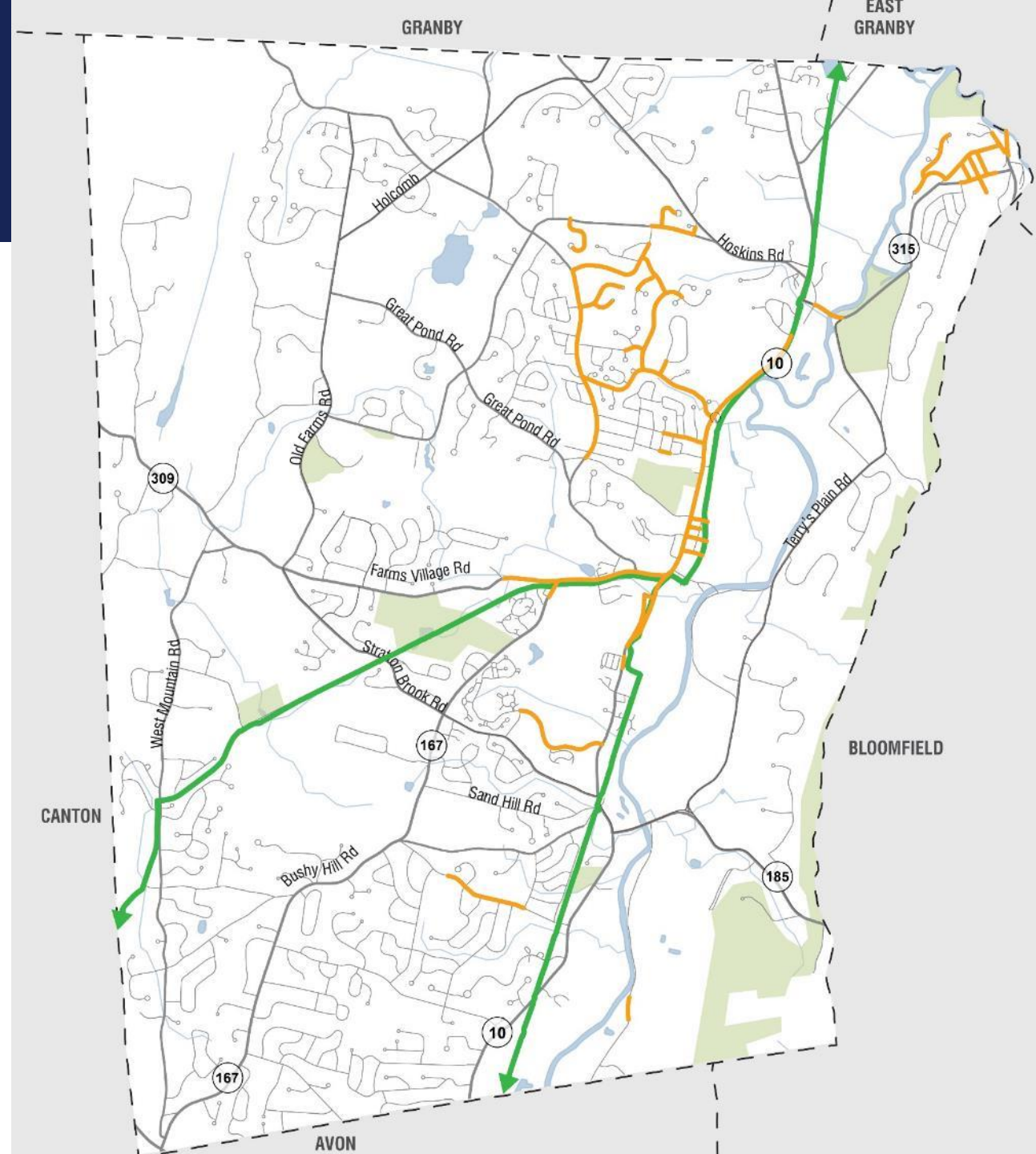
# NETWORK NEEDS ASSESSMENT

## Existing Network

Sidewalks 

FVHT /  
Farmington  
River Trail 

## Where are the needs?

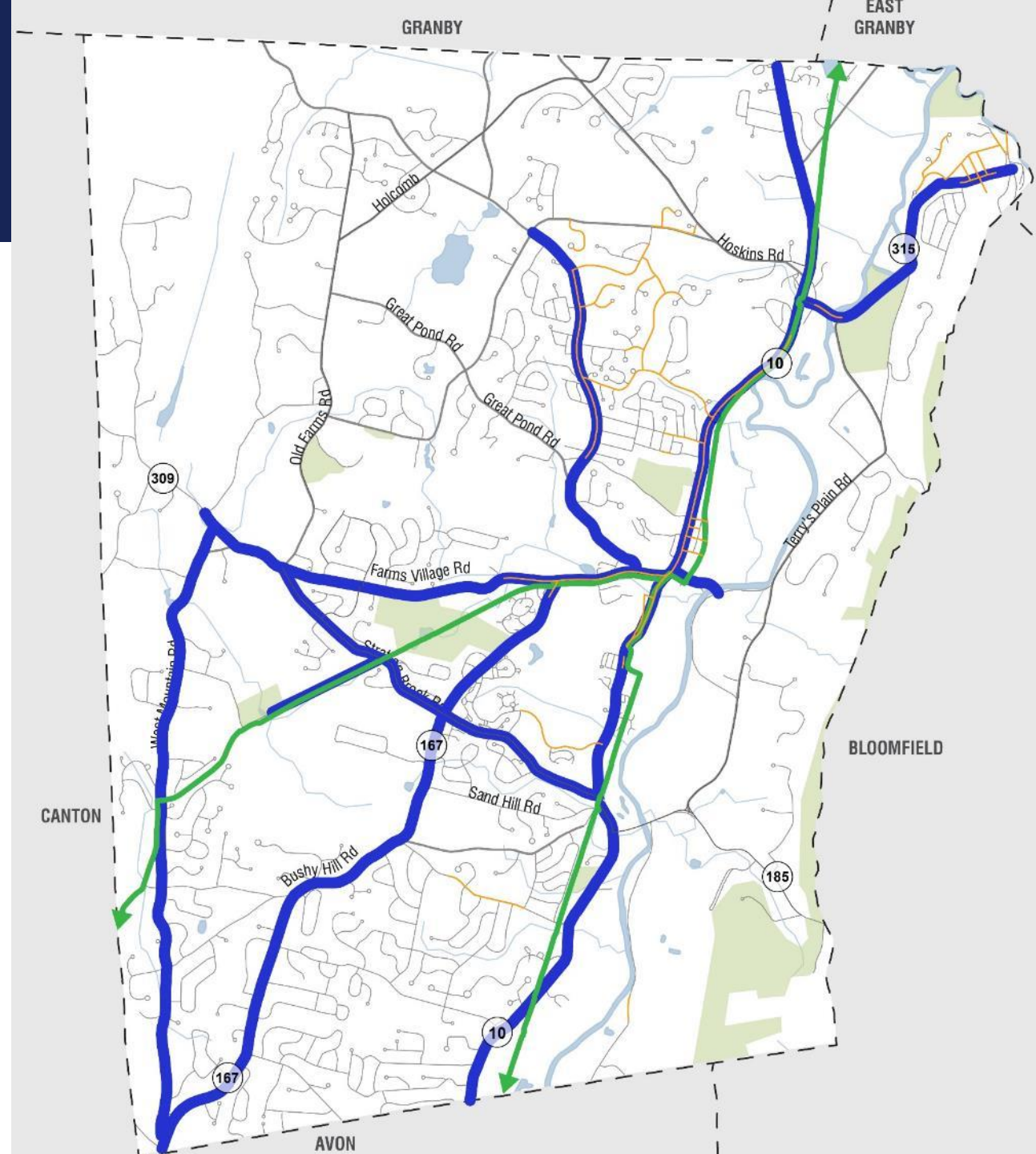




# NETWORK NEEDS ASSESSMENT

## SNAPSHOT OF TOP TEN CORRIDORS

1. Bushy Hill Road
2. Drake Hill Road
3. Farms Village Road
4. Firetown Road
5. Hopmeadow Street / Route 10
6. Stratton Brook Road
7. Tariffville Road / Route 315
8. Town Forest Road
9. West Mountain Road
10. West Street



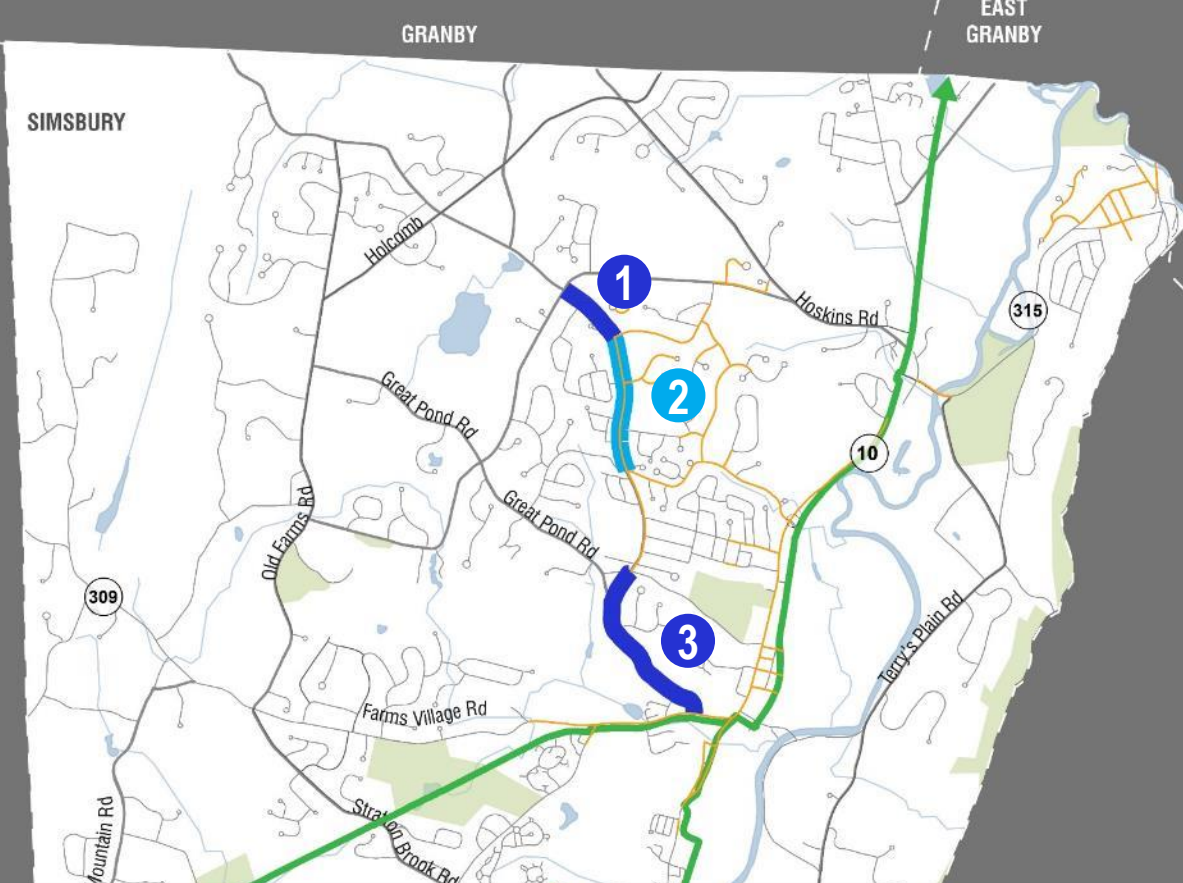




# NETWORK NEEDS ASSESSMENT

## FIRETOWN ROAD

- 1 New sidewalk:** North extension from Squadron Line Road to Hoskins Road
- 2 Improve existing sidewalk:** Between Squadron Line Road and Owens Brook Boulevard
- 3 New sidewalk:** South extension from Plank Hill Road to West Street





# NETWORK NEEDS ASSESSMENT

New connections\* 

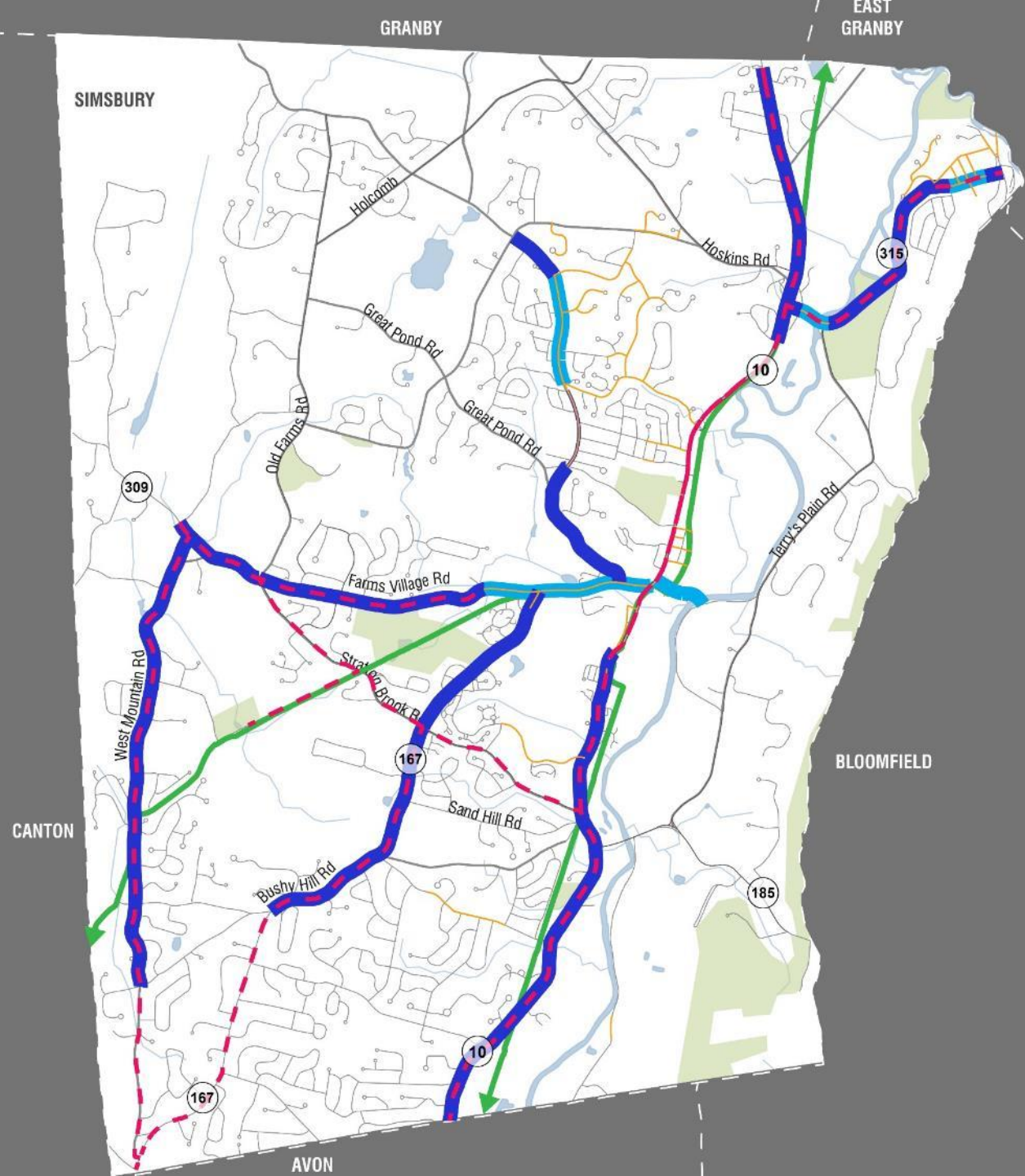
Improved Sidewalks 





# NETWORK NEEDS ASSESSMENT

- New Sidewalks 
- Improved Sidewalks 
- Traffic Calming 





# NETWORK NEEDS ASSESSMENT

New Sidewalks 

Improved Sidewalks 

Traffic Calming 

Gateways 





# NETWORK NEEDS ASSESSMENT

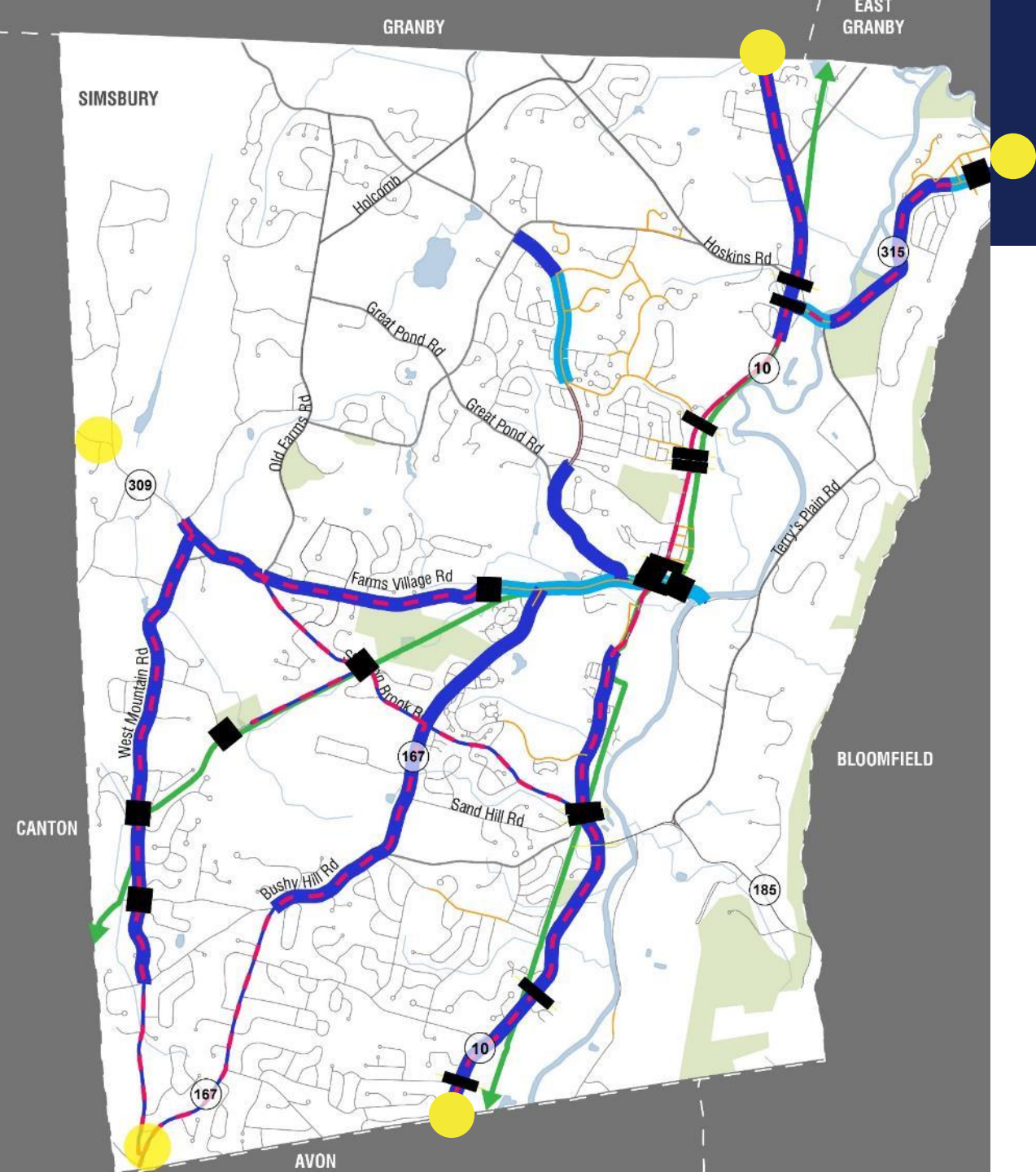
New Sidewalks 

Improved Sidewalks 

Traffic Calming 

Gateways 

New or improved crossings 





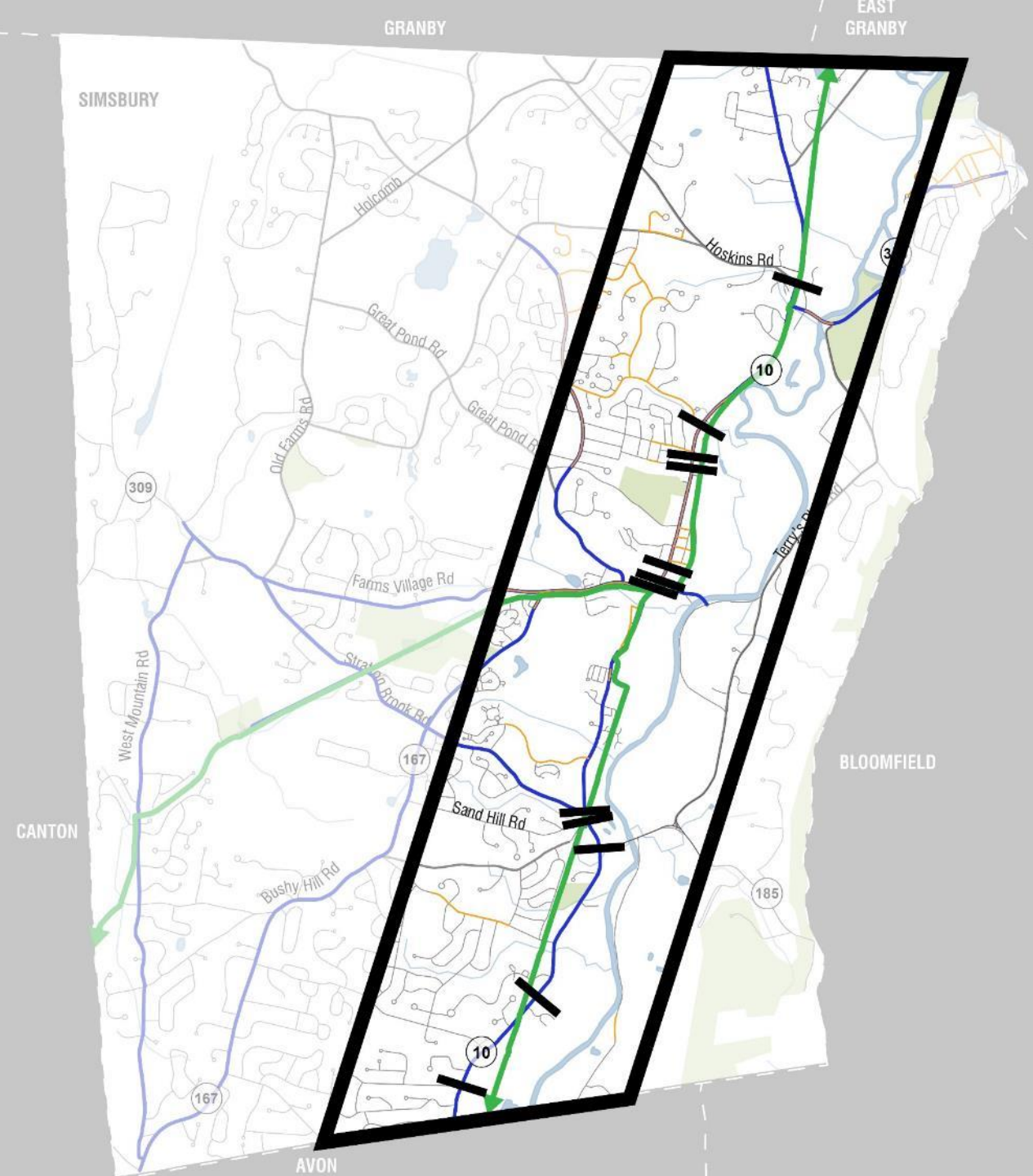
# NETWORK NEEDS ASSESSMENT



## What do you think?

Priority crossings along Hopmeadow St / Rte 10

- Liberty Lane
- Trail Crossing
- Sand Hill Road
- West Street/ Drake Hill Road
- Library / Fitzgerald's
- Massaco Street
- Owens Brook Boulevard
- Tariffville Road / Route 315
- Hoskins Road





# NETWORK NEEDS ASSESSMENT

Top needs may not be top recommendations

Many other locations and facilities listed as needs in the assessment

The image shows a large, multi-column spreadsheet table. The columns include 'Location', 'Facility', 'Assessment', 'Recommendation', and several columns with numerical values. The rows contain detailed data for various locations and facilities, with some cells highlighted in red or green. The table is dense with text and numbers, representing a comprehensive network needs assessment.



# NETWORK RECOMMENDATIONS

Top needs may not be top recommendations

## Considerations:

- Cost
- Timeframe
- Ease of implementation
- State-maintained facility

State-maintained facility 

Top 10 network needs 







# NETWORK RECOMMENDATIONS

## Lighting

### Considerations:

- Community feedback
- Prior commitments
- POCD

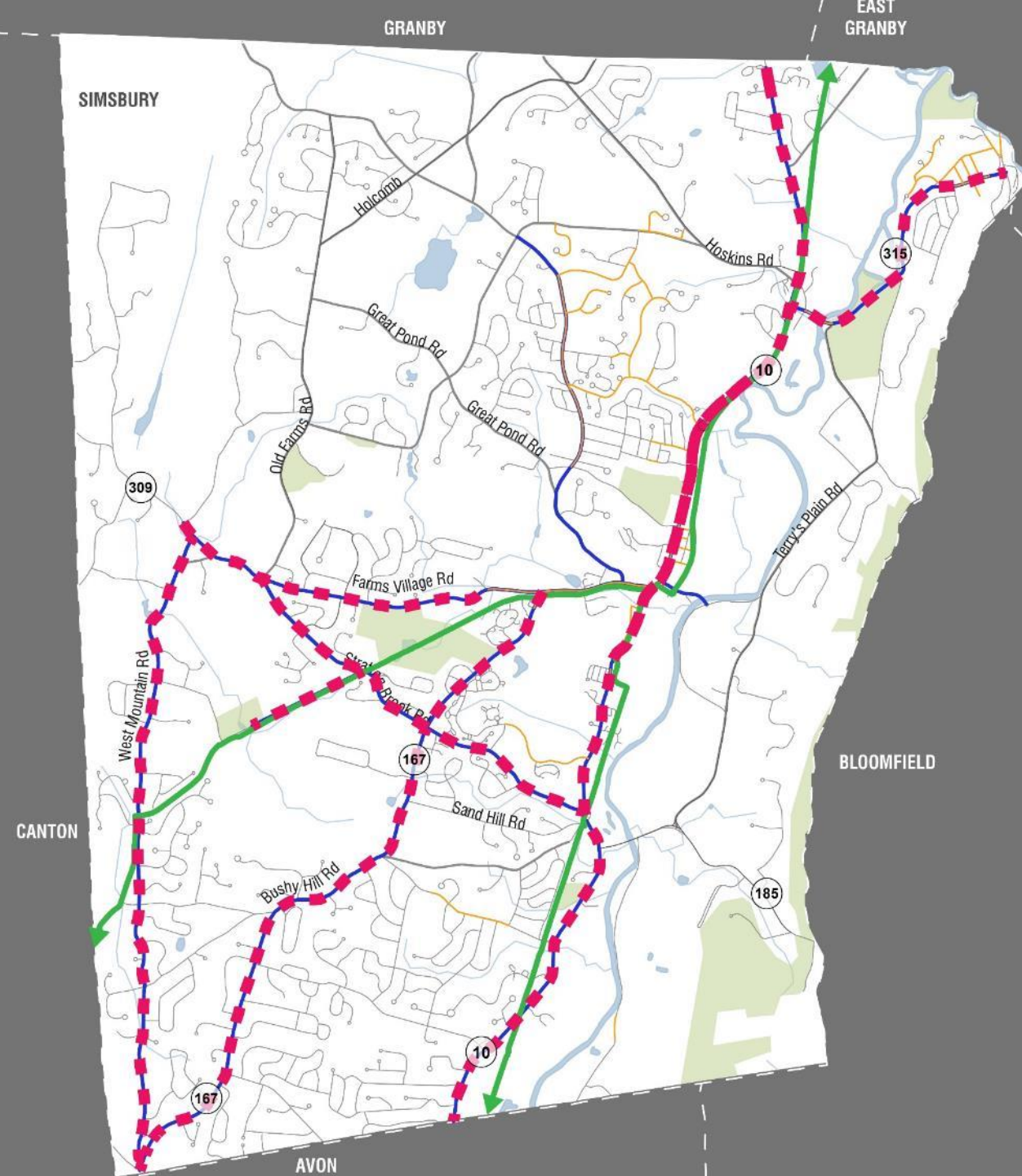




# NETWORK NEEDS ASSESSMENT

Range of traffic calming options

- Paved shoulder with buffer (e.g.: painted lines, bicycle tolerable rumble strips, etc.)
- High-visibility crosswalks
- Raised crosswalks
- Speed hump
- Paint or build curb bump-outs
- Landscaped median
- Chicane
- Traffic circle





# FACILITIES RECOMMENDATIONS

## Range of Traffic Calming

**Buffered Shoulder**



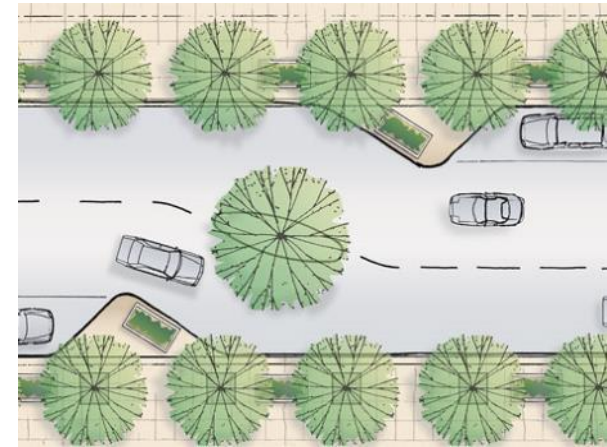
**Traffic circle**



**Curb Bump-outs**



**Chicane**



**High-visibility Crosswalk**



**Raised Crosswalk**





# FACILITIES RECOMMENDATIONS

- Best practices by typology
- Needs assessment:
  - Sidewalks
  - Crossing signals
  - Bike parking at economic hubs
  - Trash cans
  - Signage





# SIGNAGE AND WAYFINDING

## Needs

- Enhance safety
- Help establish network
- Aid in economic development
- Educate
- Reinforce sense of place





# SIGNAGE AND WAYFINDING

## Sample Recommendations

- Types of guide signs
- Type of "gateway" signs
- Specific regulatory signs can both encourage proper behavior and educate
- Steer path users to services and local establishments





# SIGNAGE AND WAYFINDING

## Sample Recommendations

- Types of guide signs
- Type of "gateway" signs
- Specific regulatory signs can both encourage proper behavior and educate
- Steer path users to services and local establishments





# SIGNAGE AND WAYFINDING

## Sample Recommendations

- Types of guide signs
- Type of "gateway" signs
- Specific regulatory signs can both encourage proper behavior and educate
- Steer path users to services and local establishments







# SIGNAGE AND WAYFINDING

## Sample Recommendations

- Types of guide signs
- Type of "gateway" signs
- Specific regulatory signs can both encourage proper behavior and educate
- Steer path users to services and local establishments





# MAINTENANCE

## Needs

- Annual maintenance: restriping
- Weekly/monthly/periodic maintenance: mowing, fence repair
- Street repaving & repair
- Budget, budget, budget





# MAINTENANCE

## Sample Recommendations

- Create classifications to inform maintenance needs
- Formalize departmental responsibility for maintenance activities
- Allow for being proactive rather than reactive
- Tree species, type of paint, et al



# NEEDS / PRIORITIZATION ACTIVITY





# BE TOWN MANAGER FOR A DAY

## Prioritization Activity

### Directions:

- Get your 20 tickets
- Fund the items you feel are most important
- Have fun!





# BE TOWN MANAGER FOR A DAY

## Prioritization Activity

### Policies and Programs

1. Designate a Town pedestrian coordinator/dedicated staff
2. Implement a non-motorized count program
3. Implement a traffic calming/speed management program
4. Create Complete Streets ordinance/policy and implementation guidance
5. Create crash reduction policy statement or strategy (e.g. Vision Zero)
6. Include targets for increased mode share in this *Master Plan*
7. Implement a design toolbox of best practices
8. Offer short, family-oriented rides and/or bicycle education classes

### Maintenance

1. Improve maintenance (mowing, leaves, snow removal) on trails
2. Chip seal resurfacing
3. Highly visible crosswalks at key destinations

### Network/Infrastructure

1. Encourage bicycle parking at community destinations
2. Improve sidewalks near schools
3. Improve crossings to access trails, sidewalks, and community destinations
4. Add connections (sidewalks or trails) between neighborhoods
5. Improve streetscaping along key corridors
6. Build major traffic calming (e.g. curb extensions, chicanes, speed humps, speed signs etc.) along key corridors
7. Add minor amenities (e.g. dog waster bag containers, bicycle parking) along trails
8. Add major amenities (e.g. restrooms, water fountains) along trails
9. Add lighting to trails
10. Add lighting on roadways with high pedestrian and bicycle traffic
11. Make all sidewalk transitions ADA compliant



# FURTHER DISCUSSION

- How do Bicycle Friendly Gold recommendations match today's activity results?
- How do Walk Friendly Assessment recommendations match today's activity results?
  - Are these designations important? Should the *Master Plan* match their recommendations?
- Are there other needs that could affect the character or focus of the Town and its resources?
  - Are these changes desirable?

# NEXT STEPS







# NEXT STEPS

## Plan Development

- Draft Plan to Town Staff (February 16, 2018)
- Town comments to FHI (March 2, 2018)
- Revised Draft Plan to Advisory Committee (March 16, 2018)
- Committee comments in (March 30, 2018)
- Final Plan submitted for approval (April 6, 2018)
- BOS presentation (April, 2018)



**THANK YOU**