

Client:



Location:

Simsbury, CT.

Project:

Proposed Wall Sign

Notes:

Dwg. Date:  
11-11-21

Scale:  
NTS.

Revisions: \_\_\_\_\_ Date: \_\_\_\_\_

Presented By:



The Sign Resource, Inc.  
P.O. Box 6215 Hickory, NC. 28603  
Ph. 727-669-6877 www.TSRFL.com

Note: This drawing is property of The Sign Resource, & shall not be reproduced without written permission

Dwg. Number: TS-8571



Elevation: Proposed Wall Sign  
NTS. Sq. Ft.= 82.65

Illumination provided by Gooseneck lamps...  
provided by others.

**General Materials:**

**Construction**

Flexible fabric face with graphics, stretched over face frame.

Face frame is 2" x 2" Sq. Aluminum tubing, with vertical & horizontal tube framing where needed per sign size.

Sign frame is fastened directly to wall corrugated metal surface or flat block surfaces if installed on building side using thru bolts, lag bolts or concrete anchors as needed.

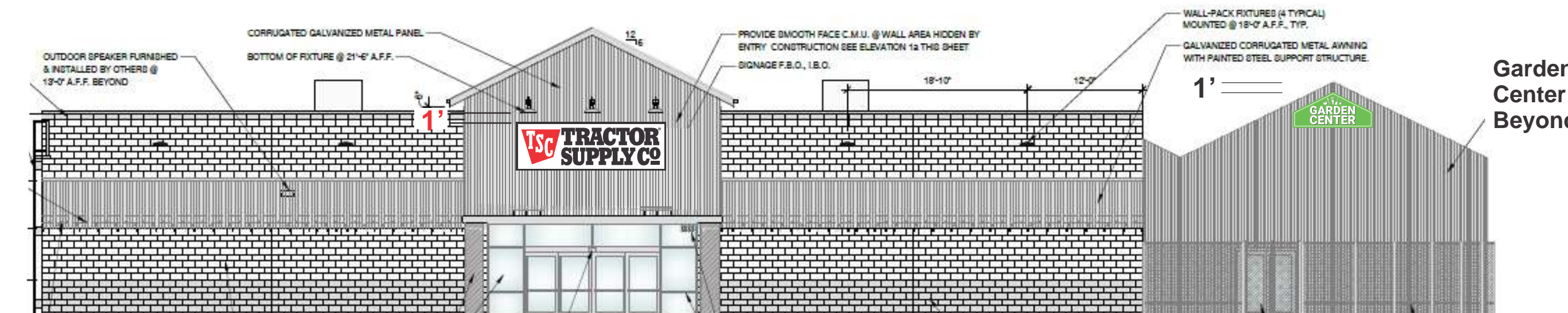
Illumination will be provided by Gooseneck lamps from above that will be provided by others.

**Colors & Face Specifications**

Frame, & face retainers / covers are finished High Gloss Black.

Face Material...product as follows...

Substrate-	*3M Panagraphics 3 flexible substrate.
Descrip:	Translucent media with Polyester scrim Embedded in a White Pigmented Vinyl.
Finish:	Smooth front surface, with white semi-gloss finish.
Thickness:	27 mil.
Lettering & Trapezoid colors	Logo Bkgd: Series: 3M / Gerber 230-33 Red. Logo copy White. Lettering: Series 3M / Gerbers 220-22 Black. Registration Mark to match lettering.



**Storefront Elevation with Proposed Signs**