

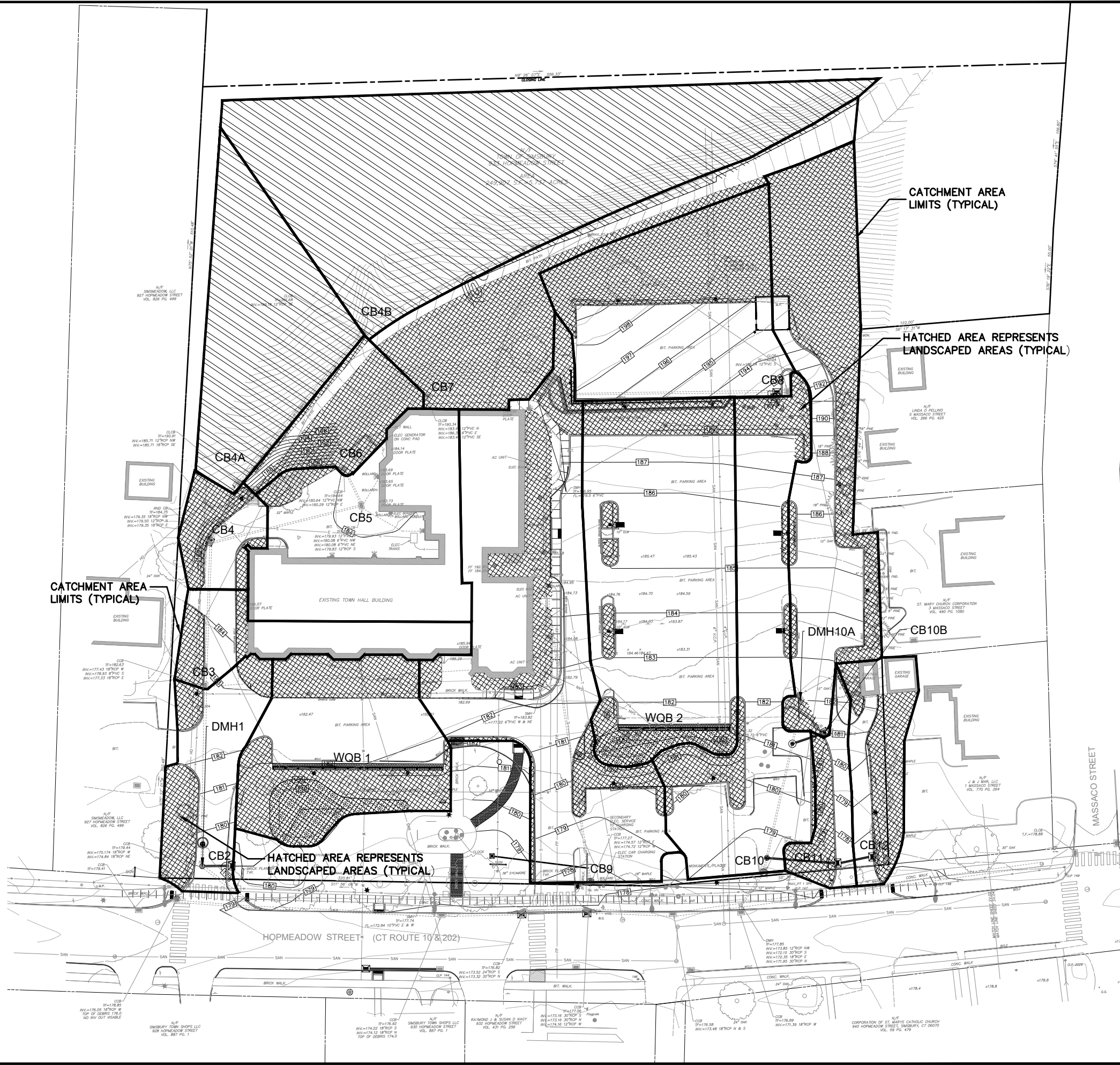
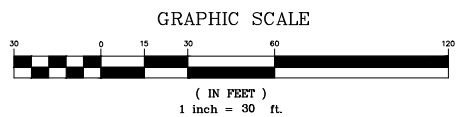
**LEGEND**

- ☐ = PROPOSED CATCH BASIN
- = PROPOSED SANITARY MANHOLE
- = PROPOSED DRAINAGE MANHOLE
- ▬ = PROPOSED FLARED END SECTION
- ▬ = PROPOSED WATER GATE VALVE
- ▬ = PROPOSED HYDRANT
- ▬ = PROPOSED SPOT GRADE
- ▬ = PROPOSED CONTOUR
- ▬ = PROPOSED LIGHT STANDARD
- ▬ = PROPOSED UTILITY POLE
- ▬ = PROPOSED SEPARATOR STRUCTURE
- ☐ = PROPOSED CONSTRUCTION EXIT (CE)
- ▬ = PROPOSED HAYBALE CHECK DAM (HBCD)
- ▬ = PROPOSED HAYBALE EROSION CONTROL (HBEC)
- ▬ = PROPOSED RIPRAP PLUNGE POOL (RRPP)
- ▬ = PROPOSED SEDIMENT FENCE EROSION CONTROL (SFEC)

**SOIL TYPE INDEX**

- WETLAND SOILS:**  
 9 - Scitico, Shaker and Maybid soils  
 109 - Fluvaquents-Udifuvents
- NON-WETLAND SOILS:**  
 25 - Bancroft silt loam  
 28 - Elmridge fine sandy loam  
 30B - Udorthents, smoothed

Catch Basin Areas				
Catch Basin Number	Total Area (sq ft)	Impervious Area (sq ft)	Landscape Area (sq ft)	Wooded Area (sq ft)
CB 2	6,933 (0.159 AC.)	4,380 (0.100 AC.)	2,553 (0.059 AC.)	0 (0.000 AC.)
CB 3	5,706 (0.131 AC.)	4,603 (0.101 AC.)	1,103 (0.025 AC.)	0 (0.000 AC.)
CB 4	3,219 (0.074 AC.)	4,603 (0.106 AC.)	1,873 (0.043 AC.)	0 (0.000 AC.)
CB 4A	13,325 (0.304 AC.)	0 (0.000 AC.)	0 (0.000 AC.)	13,325 (0.304 AC.)
CB 4B	34,479 (0.792 AC.)	0 (0.000 AC.)	0 (0.000 AC.)	34,479 (0.792 AC.)
CB 5	14,898 (0.342 AC.)	14,259 (0.327 AC.)	639 (0.015 AC.)	0 (0.000 AC.)
CB 6	4,859 (0.112 AC.)	793 (0.018 AC.)	4,066 (0.093 AC.)	0 (0.000 AC.)
CB 7	12,026 (0.276 AC.)	4,061 (0.093 AC.)	7,965 (0.183 AC.)	1,069 (0.025 AC.)
CB 8	15,728 (0.361 AC.)	8,229 (0.189 AC.)	7,499 (0.172 AC.)	0 (0.000 AC.)
CB 9	26,644 (0.612 AC.)	20,421 (0.469 AC.)	6,223 (0.143 AC.)	0 (0.000 AC.)
CB 10	15,947 (0.366 AC.)	12,404 (0.285 AC.)	3,543 (0.081 AC.)	0 (0.000 AC.)
CB 10B	17,306 (0.397 AC.)	7,289 (0.167 AC.)	10,017 (0.230 AC.)	0 (0.000 AC.)
CB 11	3,199 (0.073 AC.)	1,620 (0.037 AC.)	1,579 (0.036 AC.)	0 (0.000 AC.)
CB 12	5,266 (0.121 AC.)	2,775 (0.064 AC.)	2,491 (0.057 AC.)	0 (0.000 AC.)
WQB 1	13,001 (0.298 AC.)	5,193 (0.119 AC.)	7,808 (0.179 AC.)	0 (0.000 AC.)
WQB 2	22,015 (0.505 AC.)	17,396 (0.399 AC.)	4,619 (0.106 AC.)	0 (0.000 AC.)



No.	Date	Description

PIPE-TO-PIPE ANALYSIS PLAN  
 PREPARED FOR  
**TOWN OF SIMSBURY**  
 933 HOPMEADOW STREET  
 SIMSBURY, CONNECTICUT  
 Date: 08-25-2020 Drawn by: DRT Job no: 19188  
 Scale: 1" = 30' Checked by: DSZ Sheet no: 1 OF 1  
 © 2019/2020 - Simsbury Town Hall Parking/Submitals 2020-08-25, SMDA.dwg, DAT, Apr. 08, 2021 - 9:49:10 AM

**DA-1**

**F. A. Hesketh & Associates, Inc.**  
 3 Creamery Brook, East Granby, CT 06026  
 Phone (860) 653-8000 Fax (860) 844-8600  
 www.fahsketh.com · Planners · Landscape Architects  
 CEM & Traffic Engineers · Surveyors · Landscapers

