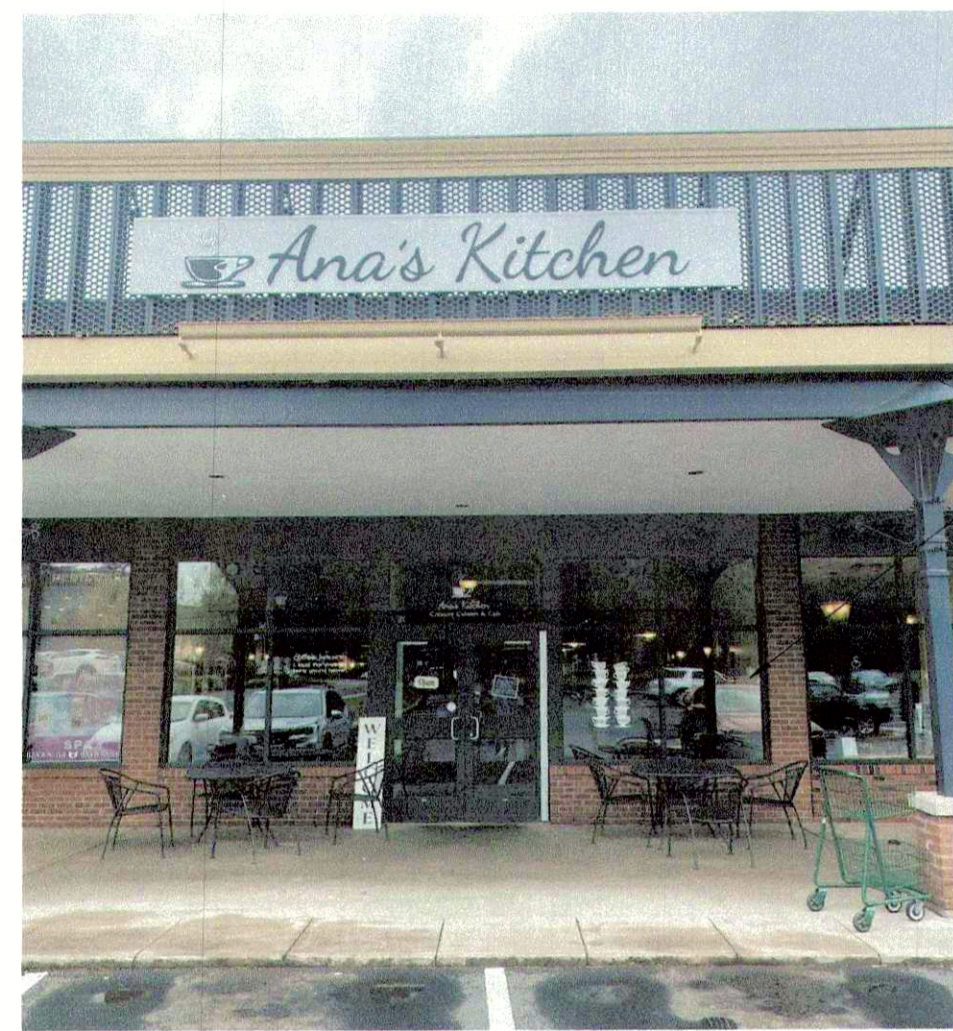
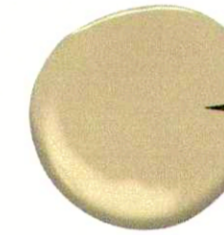


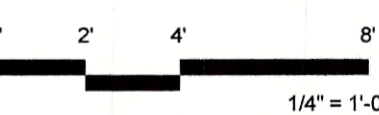
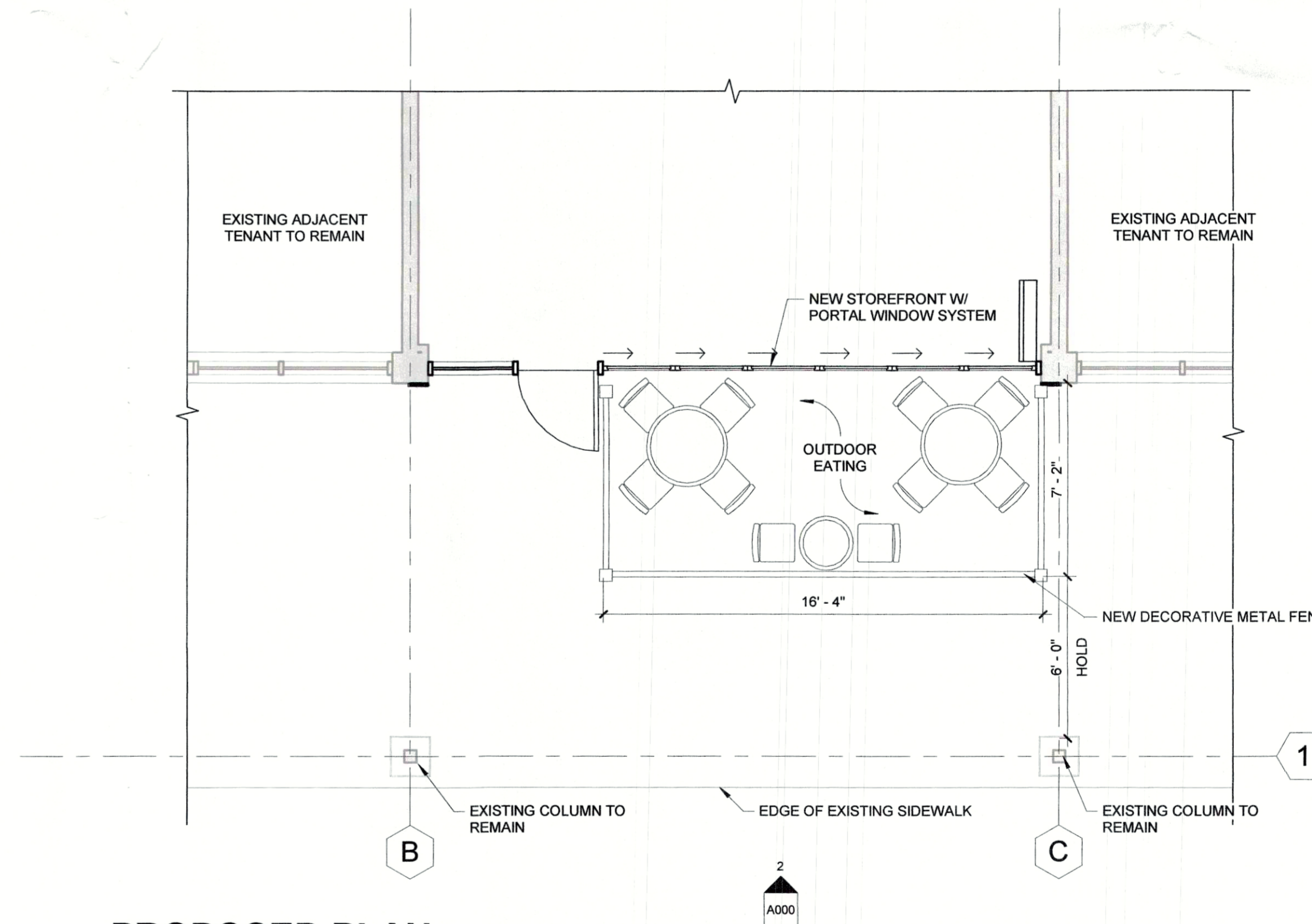
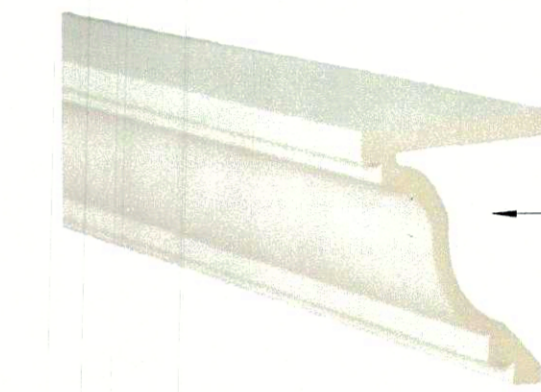
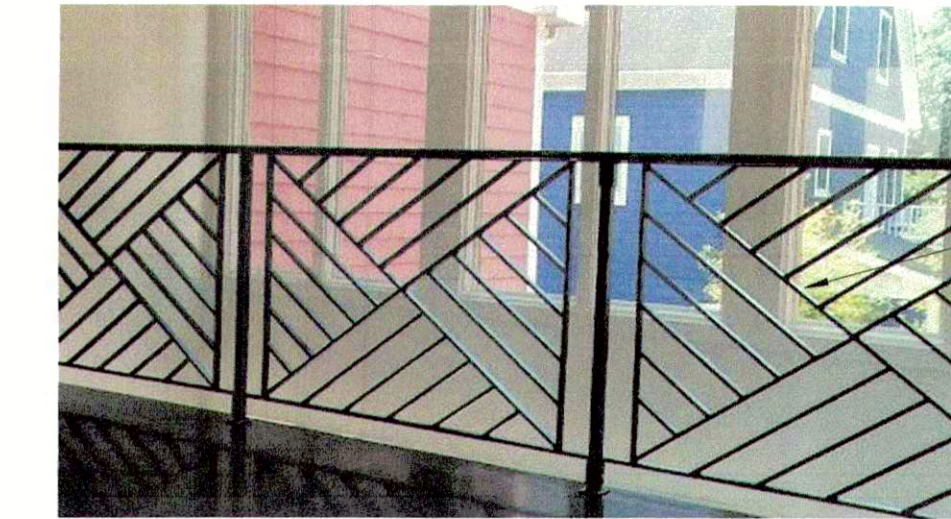
EXISTING IMAGES



EXTERIOR PAINT COLORS

-  1) PAINTED PVC TRIM & RAILING
-  2) PAINTED ALUMINUM PANEL
-  3) ALUMINUM STOREFRONT

EXTERIOR MATERIALS & PRODUCTS



ANA'S KITCHEN FACADE RENOVATION

712 HOPMEADOW STREET, SIMSBURY, CT 06070

EXTERIOR ELEVATION, PLAN, AND MATERIALS | 5.19.2021





ANA'S KITCHEN FACADE RENOVATION

712 HOPMEADOW STREET, SIMSBURY, CT 06070

EXISTING BUILDING IMAGES | 5.19.2021



EXISTING IMAGES



TENANT LOCATION @ DRAKE HILL MALL



EXISTING TENANT FACADE

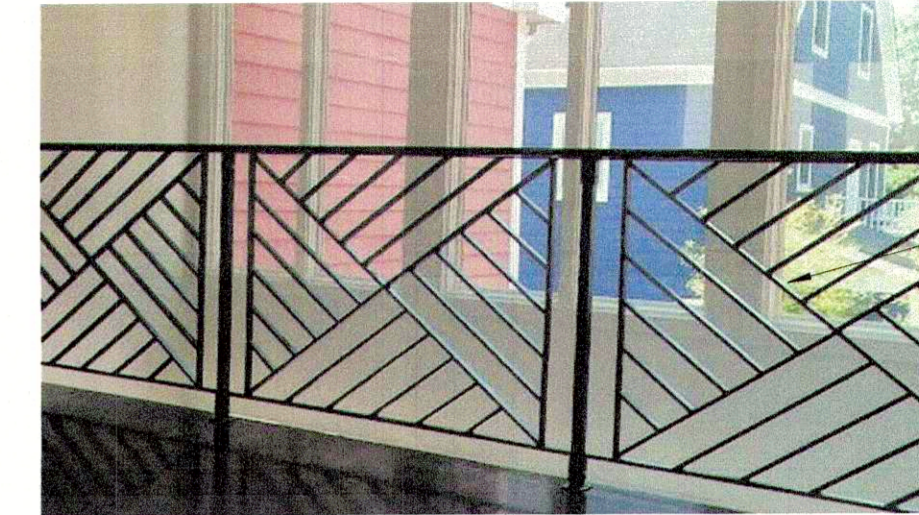
EXTERIOR PAINT COLORS

-  1) PAINTED PVC TRIM & RAILING
-  2) PAINTED ALUMINUM PANEL
-  3) ALUMINUM STOREFRONT

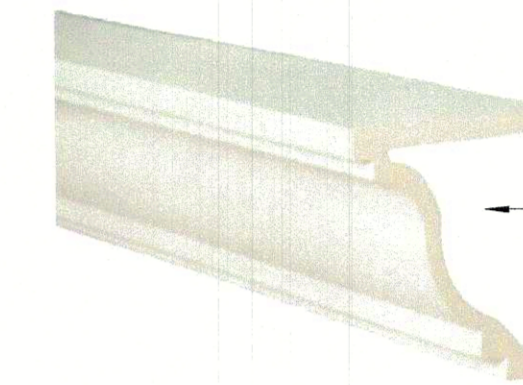
EXTERIOR MATERIALS & PRODUCTS



1) PORTAL WINDOW SYSTEM
<https://portalincorporated.com>



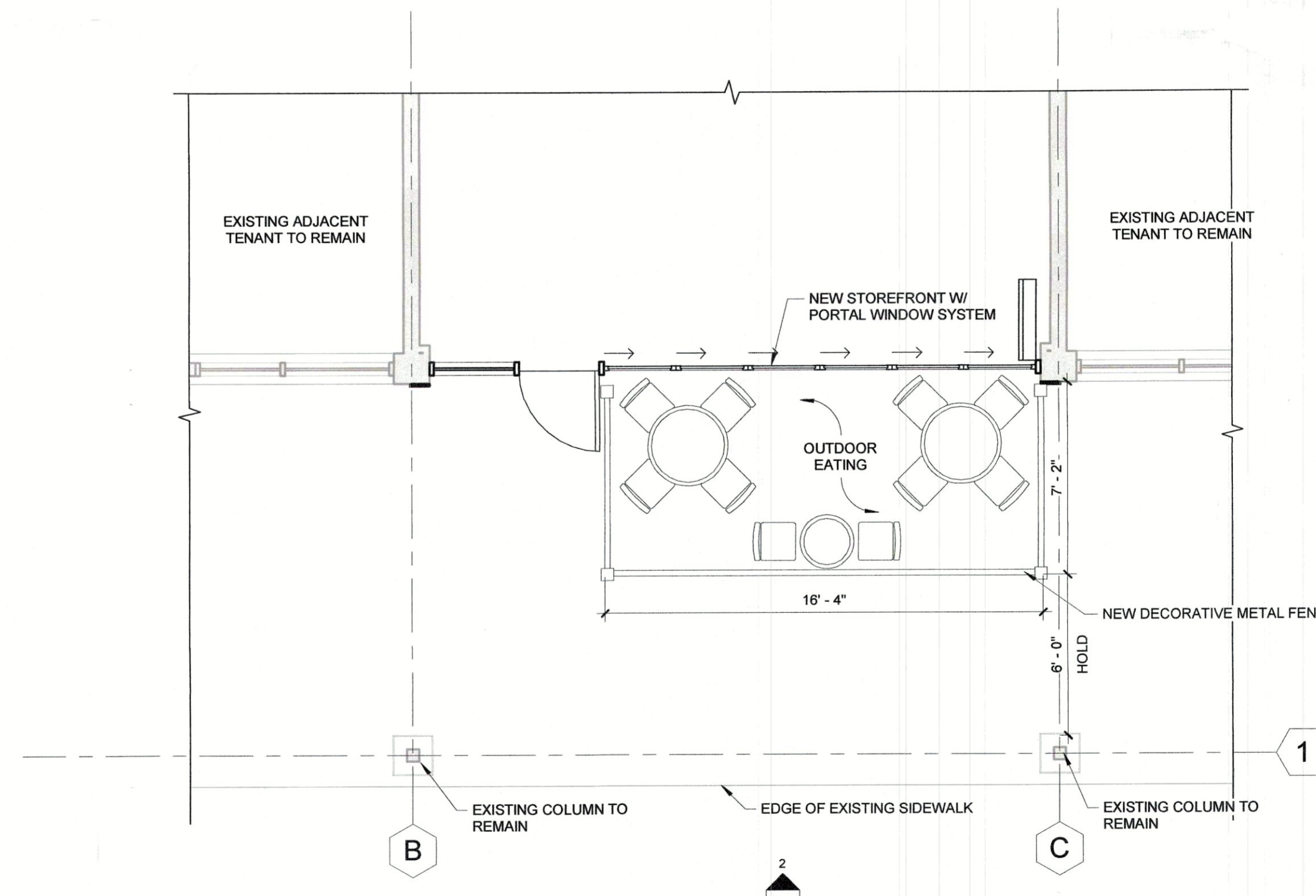
3) DECORATIVE METAL FENCE "CHIPPENDALE" PATTERN



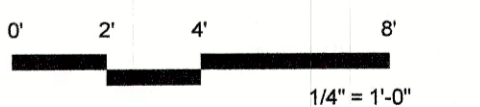
2) PAINTED PVC FYPSON PROFILE MLD511-12



2 PROPOSED ELEVATION
SCALE: 1/4" = 1'-0"



1 PROPOSED PLAN
SCALE: 1/4" = 1'-0"



ANA'S KITCHEN FACADE RENOVATION

712 HOPMEADOW STREET, SIMSBURY, CT 06070

EXTERIOR ELEVATION, PLAN, AND MATERIALS | 5.19.2021

