









FLOOR AREA -	
GROUND FLOOR	14156.52 SF
SECOND FLOOR	13624.23 SF
THIRD FLOOR	13624.23 SF
FOURTH FLOOR	13624.23 SF

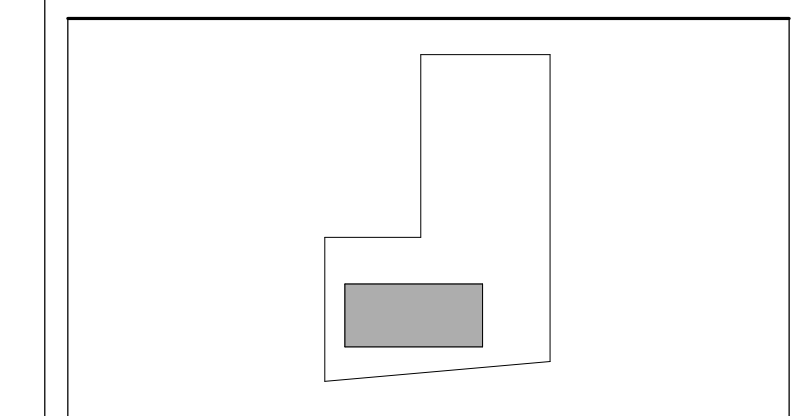
TOTAL GROUND FLOOR UNITS	
ONE BEDROOM GROUND FLOOR UNITS	20
<b>TOTAL SECOND FLOOR UNITS</b>	<b>20</b>
ONE BEDROOM SECOND FLOOR UNITS	19
TWO BEDROOM SECOND FLOOR UNITS	01
<b>TOTAL THIRD FLOOR UNITS</b>	<b>20</b>
ONE BEDROOM THIRD FLOOR UNITS	19
TWO BEDROOM THIRD FLOOR UNITS	01

TOTAL FOURTH FLOOR UNITS	
ONE BEDROOM FOURTH FLOOR UNITS	19
TWO BEDROOM FOURTH FLOOR UNITS	01
<b>TOTAL NUMBER OF DWELLING UNITS</b>	<b>80</b>
TOTAL NUMBER OF ONE BEDROOM UNITS	77
TOTAL NUMBER OF TWO BEDROOM UNITS	03



**OWNER**  
VESSEL TECHNOLOGIES  
46 W 55TH ST  
NEW YORK, NY 10019  
NY 212.413.0850

**DESIGN PROFESSIONAL OF RECORD**  
ROBERT R. DESMARAIS PE  
313 W LIBERTY ST, STE 101  
LANCASTER, PA 17603  
PA 717.617.2725 CT PROFESSIONAL ENGINEER



446 Hopmeadow Street,  
Simsbury, CT

THESE DRAWINGS ARE INSTRUMENTS OF SERVICE AND AS SUCH MAY NOT BE USED FOR OTHER PROJECTS, FOR ADDITIONS TO THIS PROJECT OR COMPLETION OF THIS PROJECT BY OTHERS.  
COPYRIGHT © 2019 ALL RIGHTS RESERVED.

PROJECT  
**V1007\_Hopmeadow Street\_21**

DRAWING TITLE  
**GROUND FLOOR PLAN**

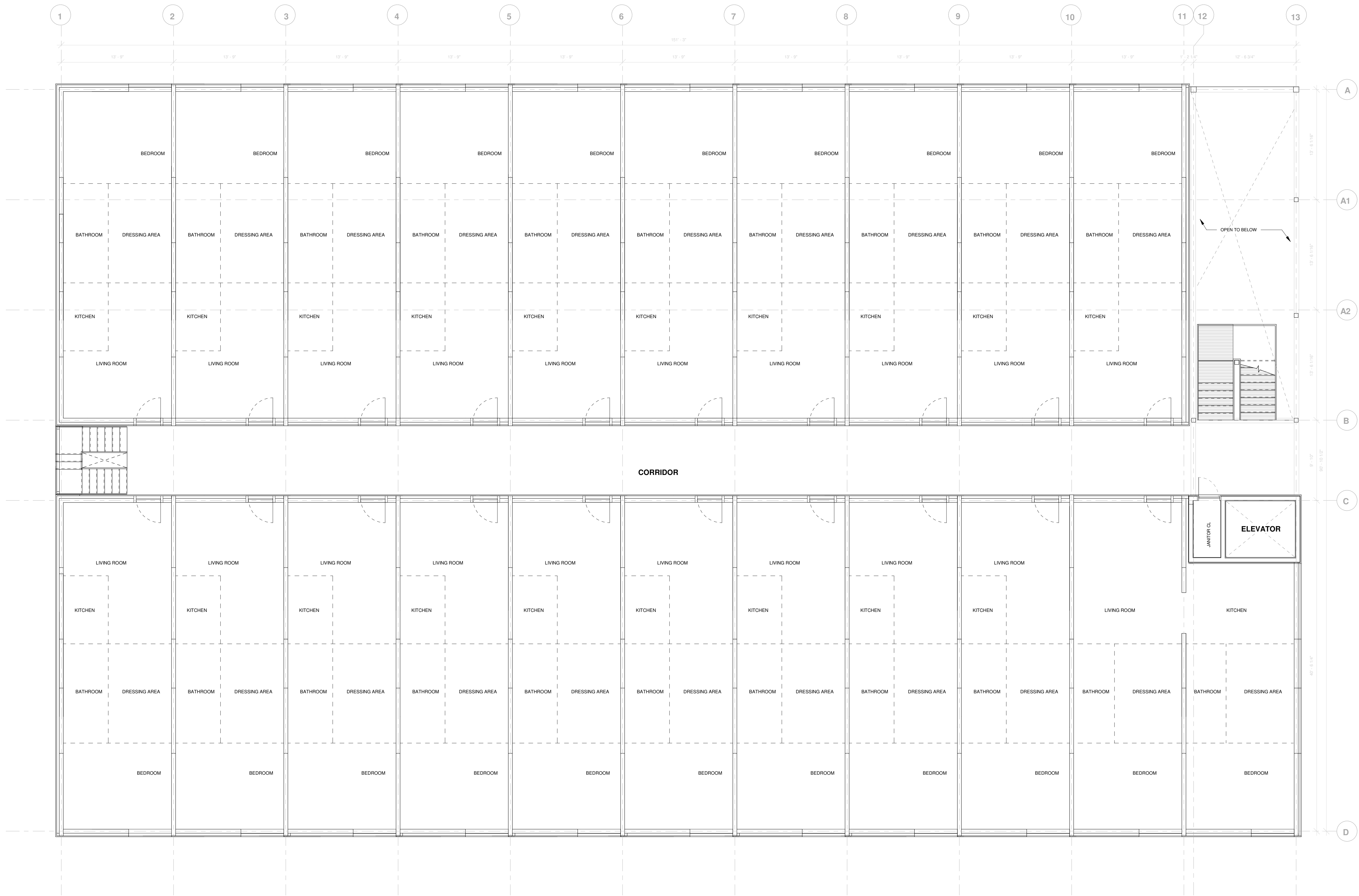
SEAL & SIGNATURE \_\_\_\_\_ DATE \_\_\_\_\_  
PROJECT NO. 2021359  
DRAWN BY Author  
CHECKED BY Checker  
DOB NO. \_\_\_\_\_  
DRAWING NUMBER

**A-101**

FLOOR AREA -	
GROUND FLOOR	14156.52 SF
SECOND FLOOR	13624.23 SF
THIRD FLOOR	13624.23 SF
FOURTH FLOOR	13624.23 SF

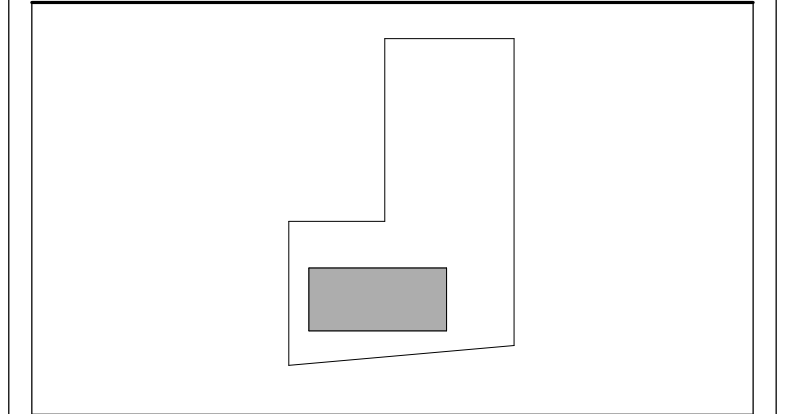
TOTAL GROUND FLOOR UNITS	
ONE BEDROOM GROUND FLOOR UNITS	20
<b>TOTAL SECOND FLOOR UNITS</b>	<b>20</b>
ONE BEDROOM SECOND FLOOR UNITS	19
TWO BEDROOM SECOND FLOOR UNITS	01
<b>TOTAL THIRD FLOOR UNITS</b>	<b>20</b>
ONE BEDROOM THIRD FLOOR UNITS	19
TWO BEDROOM THIRD FLOOR UNITS	01

TOTAL FOURTH FLOOR UNITS	
ONE BEDROOM FOURTH FLOOR UNITS	19
TWO BEDROOM FOURTH FLOOR UNITS	01
<b>TOTAL NUMBER OF DWELLING UNITS</b>	<b>80</b>
TOTAL NUMBER OF ONE BEDROOM UNITS	77
TOTAL NUMBER OF TWO BEDROOM UNITS	03



OWNER  
 VESSEL TECHNOLOGIES  
 46 W 55TH ST  
 NEW YORK, NY 10019  
 NY 212.413.0850

DESIGN PROFESSIONAL OF RECORD  
 ROBERT R. DESMARAIS PE  
 313 W LIBERTY ST, STE 101  
 LANCASTER, PA 17603  
 PA 717.617.2725 CT PROFESSIONAL ENGINEER



446 Hopmeadow Street,  
 Simsbury, CT

THESE DRAWINGS ARE INSTRUMENTS OF SERVICE AND AS SUCH MAY NOT BE USED FOR OTHER PROJECTS, FOR ADDITIONS TO THIS PROJECT OR COMPLETION OF THIS PROJECT BY OTHERS.  
 COPYRIGHT © 2019 ALL RIGHTS RESERVED.

PROJECT  
**V1007\_Hopmeadow Street\_21**

DRAWING TITLE  
**TYPICAL FLOOR PLAN**

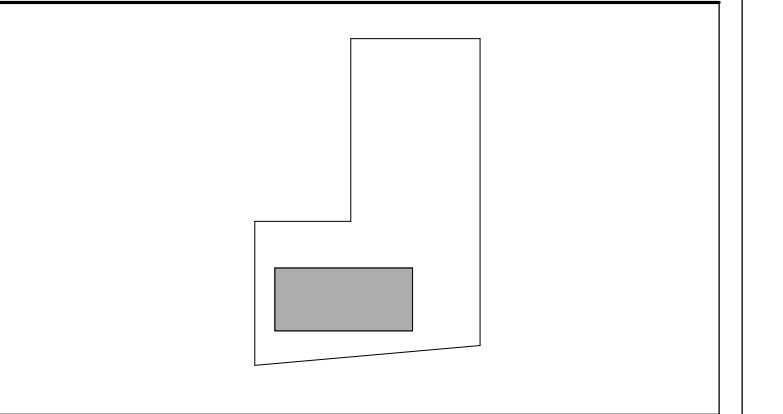
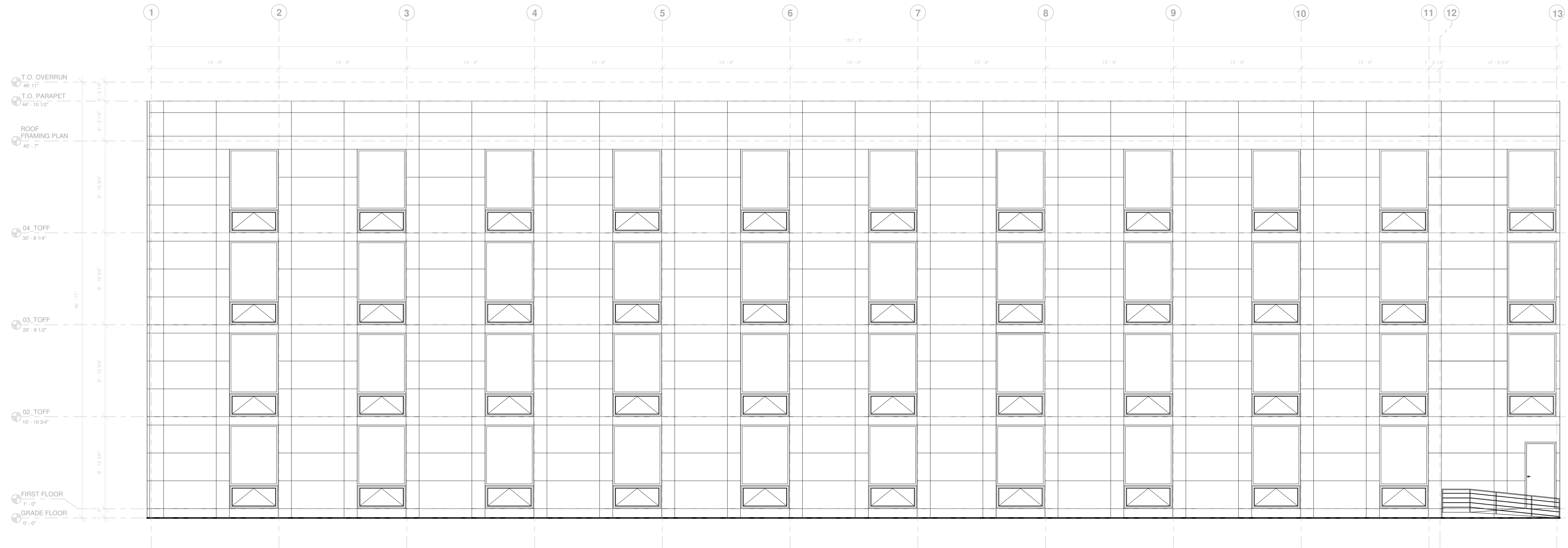
SEAL & SIGNATURE  
 DATE  
 PROJECT NO. 2021359  
 DRAWN BY Author  
 CHECKED BY Checker  
 DOB NO.  
 DRAWING NUMBER

**A-102**



**OWNER**  
 VESSEL TECHNOLOGIES  
 46 W 55TH ST  
 NEW YORK, NY 10019  
 NY 212.413.0850

**DESIGN PROFESSIONAL OF RECORD**  
 ROBERT R. DESMARAIS PE  
 313 W LIBERTY ST, STE 101  
 LANCASTER, PA 17601  
 PA 717.617.2725 CT PROFESSIONAL ENGINEER



446 Hopmeadow Street,  
 Simsbury, CT

THESE DRAWINGS ARE INSTRUMENTS OF SERVICE AND AS SUCH MAY NOT BE USED FOR OTHER PROJECTS, FOR ADDITIONS TO THIS PROJECT OR COMPLETION OF THIS PROJECT BY OTHERS.  
 COPYRIGHT © 2019 ALL RIGHTS RESERVED.

PROJECT  
**V1007\_Hopmeadow Street\_21**

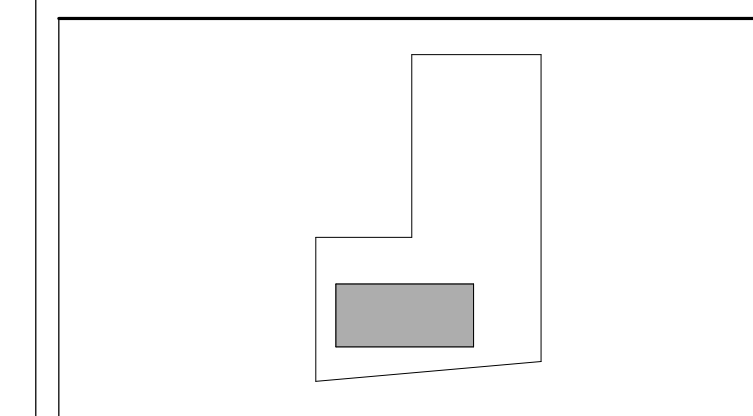
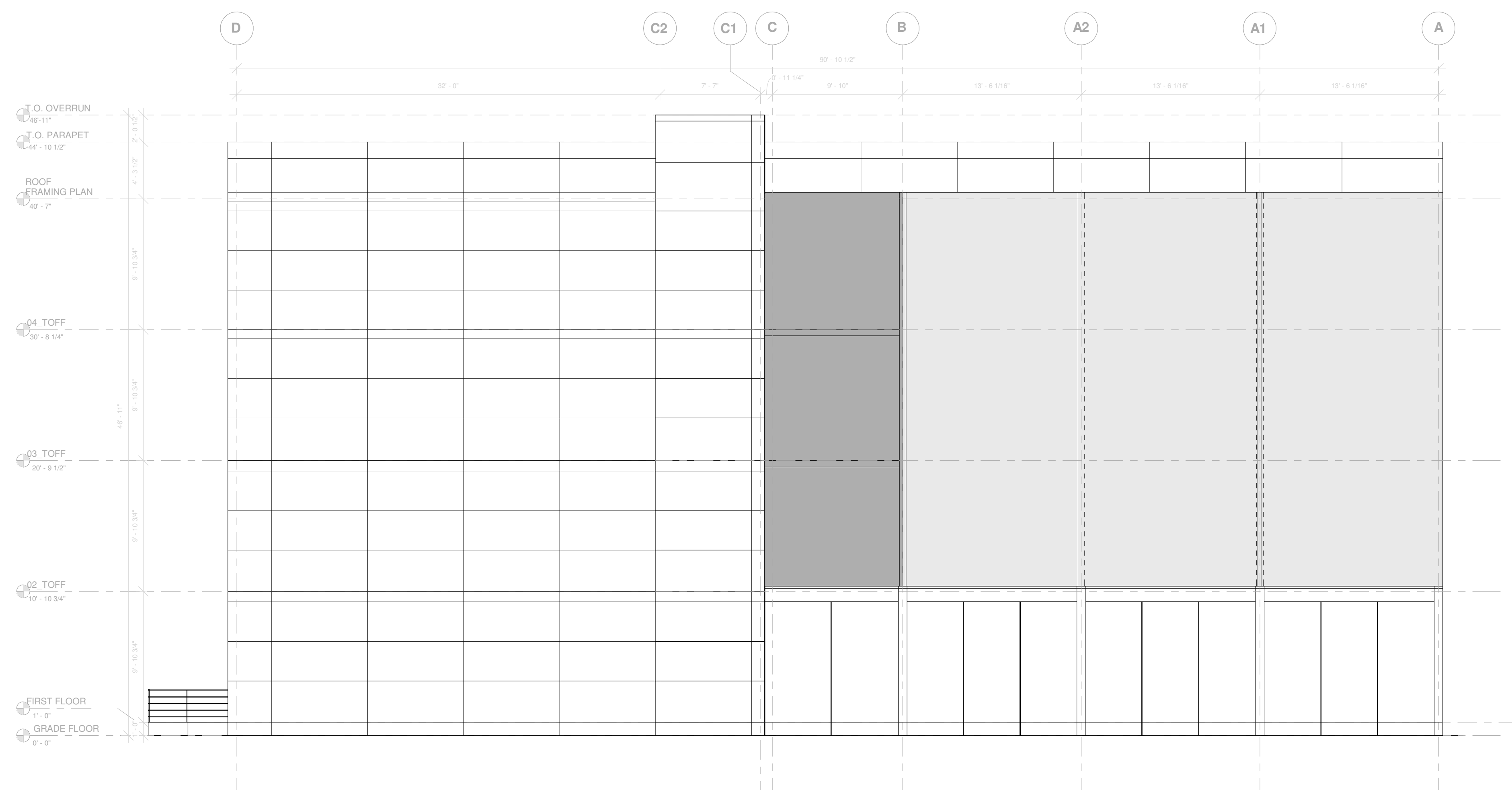
DRAWING TITLE  
**BACK ELEVATION**

SEAL & SIGNATURE	DATE
	PROJECT NO. 2021359
	DRAWN BY Author
	CHECKED BY Checker
	DOB NO.
	DRAWING NUMBER

**A-104**

**OWNER**  
 VESSEL TECHNOLOGIES  
 46 W 55TH ST  
 NEW YORK, NY 10019  
 NY 212.413.0850

**DESIGN PROFESSIONAL OF RECORD**  
 ROBERT R. DESMARAIS PE  
 313 W LIBERTY ST, STE 101  
 LANCASTER, PA 17601  
 PA 717.617.2725 CT PROFESSIONAL ENGINEER



446 Hopmeadow Street,  
 Simsbury, CT

THESE DRAWINGS ARE INSTRUMENTS OF SERVICE AND AS SUCH MAY NOT BE USED FOR OTHER PROJECTS, FOR ADDITIONS TO THIS PROJECT OR COMPLETION OF THIS PROJECT BY OTHERS.  
 COPYRIGHT © 2019 ALL RIGHTS RESERVED.

PROJECT  
**V1007\_Hopmeadow Street\_21**

DRAWING TITLE

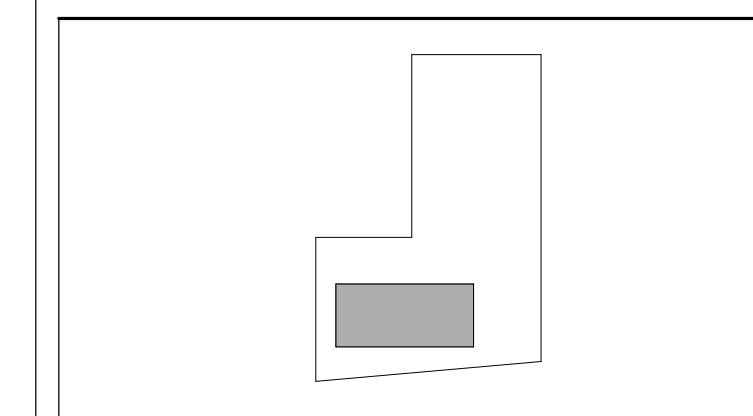
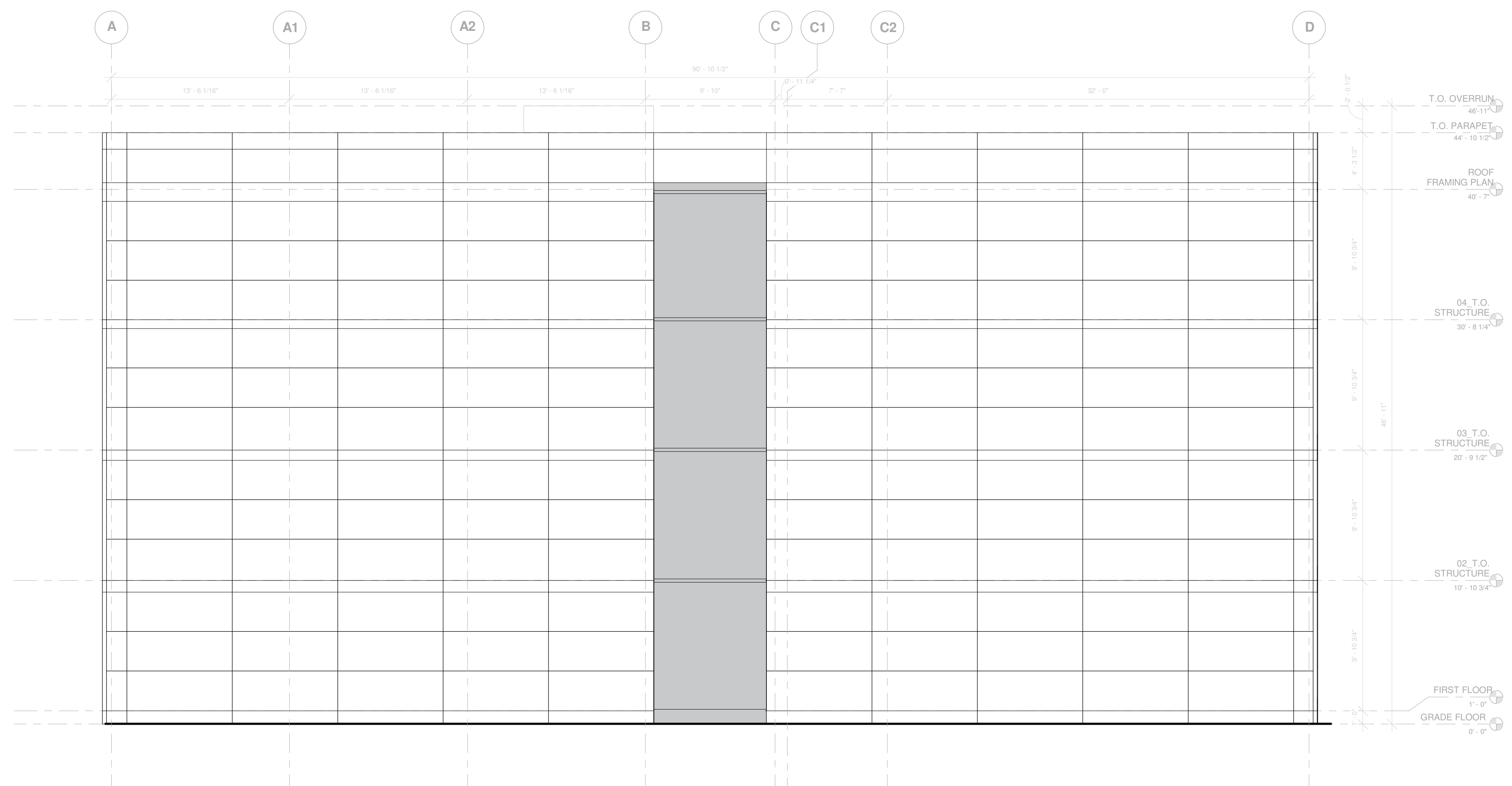
**SIDE ELEVATION 1**

SEAL & SIGNATURE	DATE
PROJECT NO.	2021359
DRAWN BY	Author
CHECKED BY	Checker
DOB NO.	
DRAWING NUMBER	

**A-105**

OWNER  
 VESSEL TECHNOLOGIES  
 46 W 55TH ST  
 NEW YORK, NY 10019  
 NY 212.413.0850

DESIGN PROFESSIONAL OF RECORD  
 ROBERT R. DESMARAIS PE  
 313 W LIBERTY ST, STE 101  
 LANCASTER, PA 17601  
 PA 717.617.2725 CT PROFESSIONAL ENGINEER



446 Hopmeadow Street,  
 Simsbury, CT

THESE DRAWINGS ARE INSTRUMENTS OF SERVICE AND AS SUCH MAY NOT BE USED FOR OTHER PROJECTS, FOR ADDITIONS TO THIS PROJECT OR COMPLETION OF THIS PROJECT BY OTHERS.  
 COPYRIGHT © 2019 ALL RIGHTS RESERVED.

PROJECT  
**V1007\_Hopmeadow Street\_21**

DRAWING TITLE

**SIDE ELEVATION 2**

SEAL & SIGNATURE	DATE
	PROJECT NO. 2021359
	DRAWN BY Author
	CHECKED BY Checker
	DOB NO.
	DRAWING NUMBER

**A-106**



