

# EXTERIOR DESIGN PACKAGE

Proposed Commercial Development

1263 Hopmeadow Street  
Simsbury, CT 06070

**Owner / Applicant**

Prospect Enterprises, LLC  
231 Farmington Avenue  
Farmington, CT 06032

**Zone:** General Busines (B2)

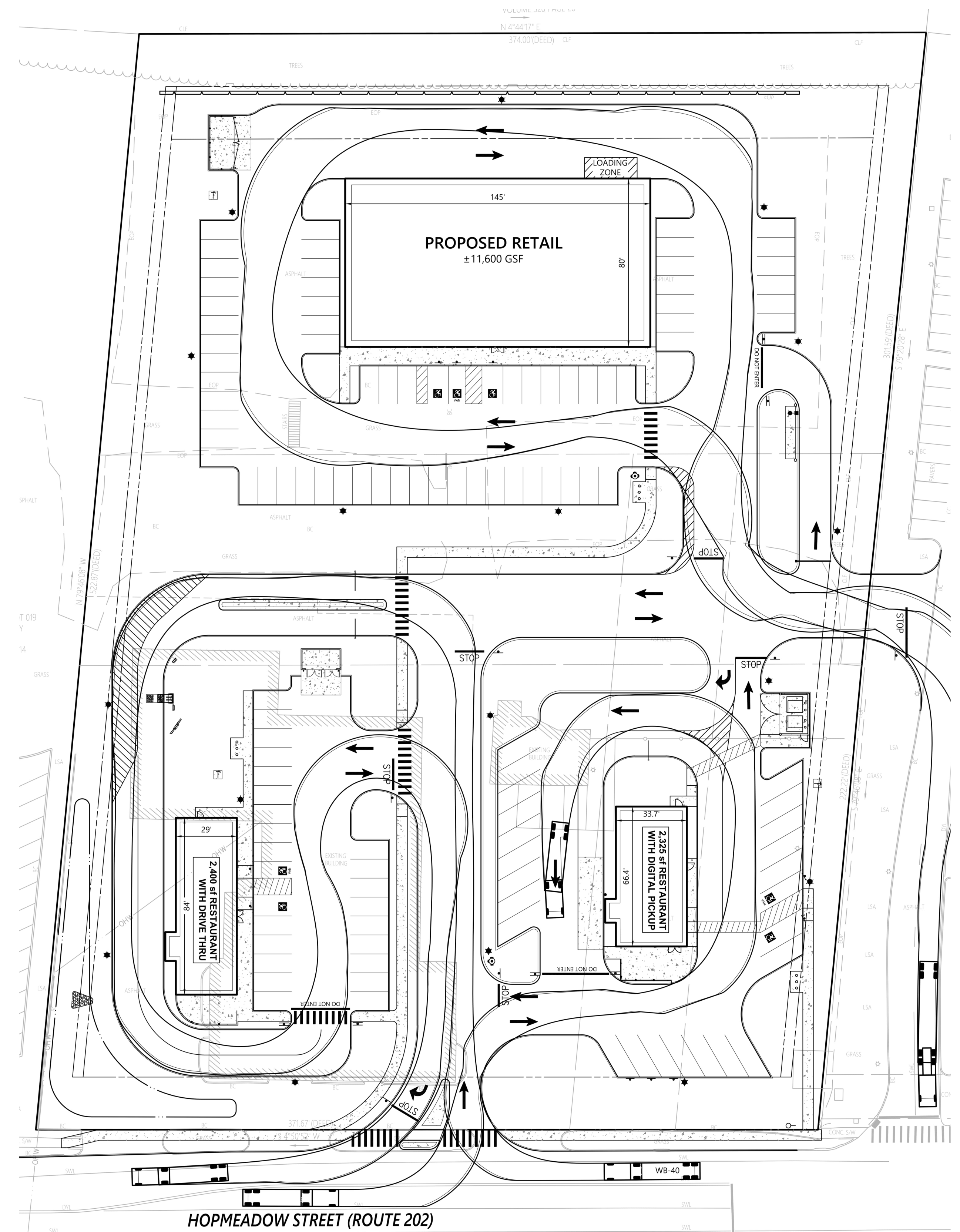
**Map:** 105

**Block:** 403

**Lots:** 017, 017R, 018, 020-1

**Sheet Index**

- A-1 Cover Sheet
- A-2 Overall Rendering - From Street
- A-3 Overall Rendering - From Street
- A-4 Overall Rendering - Birds Eye
- A-5 Overall Rendering - Birds Eye
- A-6 Retail Building - Exterior Rendering
- A-7 Retail Building - Exterior Rendering
- A-8 Retail Building - Exterior Rendering
- A-9 Retail Building - Exterior Elevations
- A-10 Starbucks - Exterior Rendering
- A-11 Starbucks - Exterior Rendering
- A-12 Starbucks - Exterior Elevations
- A-13 Chipotle - Exterior Rendering
- A-14 Chipotle - Exterior Rendering
- A-15 Chipotle - Exterior Elevations







Simsbury Retail Development

1263 Hopmeadow Street  
Simsbury, CT 06070

Prospect Enterprises, LLC

Overall Rendering - From Entrance

Drawn by: LMH    BKA #    223066    Date: 05/25/23

A-3

**BKA**  
ARCHITECTS

Boston + Brockton  
142 Crescent Street  
Brockton, MA 02302  
508.583.5603  
bkaarchitects.com



Simsbury Retail Development

1263 Hopmeadow Street  
Simsbury, CT 06070

Prospect Enterprises, LLC

Overall Rendering - Birds Eye

Drawn by: LMH

BKA #

223066 | Date: 05/25/23

A-4

**BKA**

ARCHITECTS

Boston + Brockton  
142 Crescent Street  
Brockton, MA 02302  
508.583.5603  
bkaarchitects.com



Simsbury Retail Development

1263 Hopmeadow Street  
Simsbury, CT 06070

Prospect Enterprises, LLC

Overall Rendering - Birds Eye

Drawn by: LMH

BKA #

223066 | Date: 05/25/23

A-5

**BKA**

ARCHITECTS

Boston + Brockton  
142 Crescent Street  
Brockton, MA 02302  
508.583.5603  
bkaarchitects.com



Simsbury Retail Development

1263 Hopmeadow Street  
Simsbury, CT 06070

Prospect Enterprises, LLC

Retail Building - Exterior Rendering

Drawn by: LMH

BKA #

223066 | Date: 05/25/23

A-6

**BKA**

ARCHITECTS

Boston + Brockton  
142 Crescent Street  
Brockton, MA 02302  
508.583.5603  
bkaarchitects.com



Simsbury Retail Development

1263 Hopmeadow Street  
Simsbury, CT 06070

Prospect Enterprises, LLC

Retail Building - Exterior Rendering

Drawn by: LMH    BKA #    223066    Date: 05/25/23

A-7

**BKA**  
ARCHITECTS

Boston + Brockton  
142 Crescent Street  
Brockton, MA 02302  
508.583.5603  
bkaarchitects.com



Simsbury Retail Development

1263 Hopmeadow Street  
Simsbury, CT 06070

Prospect Enterprises, LLC

Retail Building - Exterior Rendering

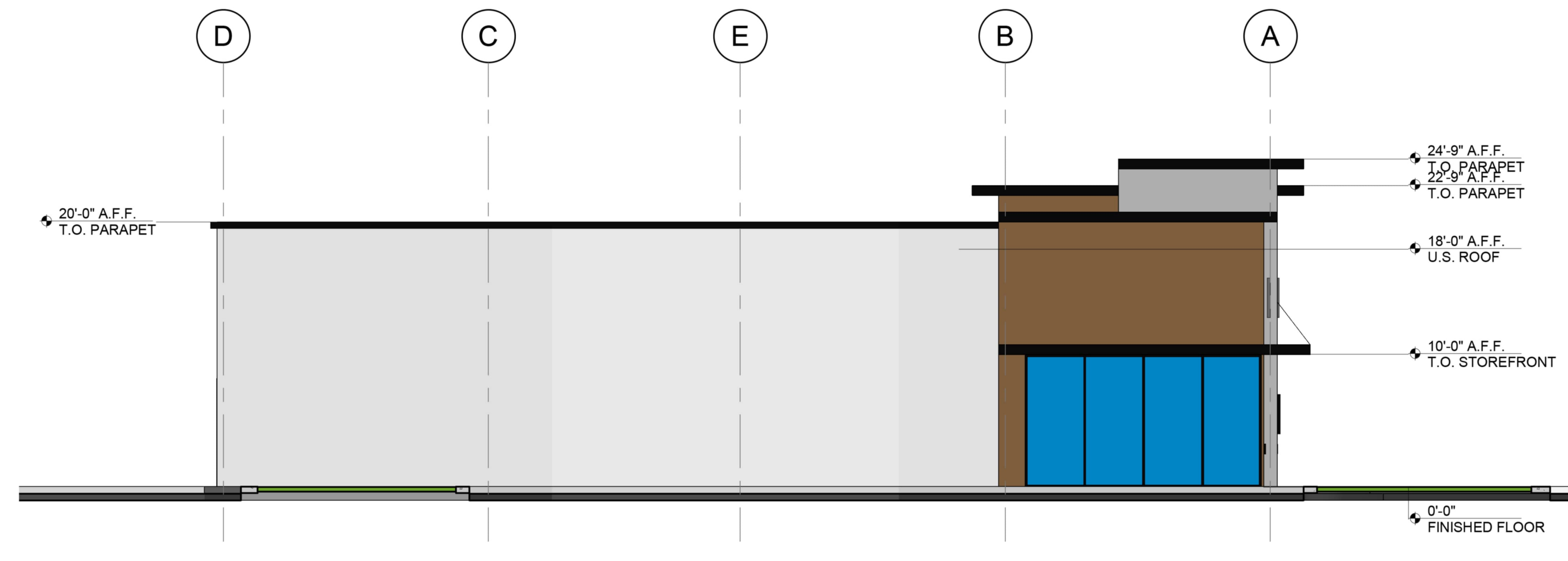
Drawn by: LMH    BKA #    223066    Date: 05/25/23

A-8

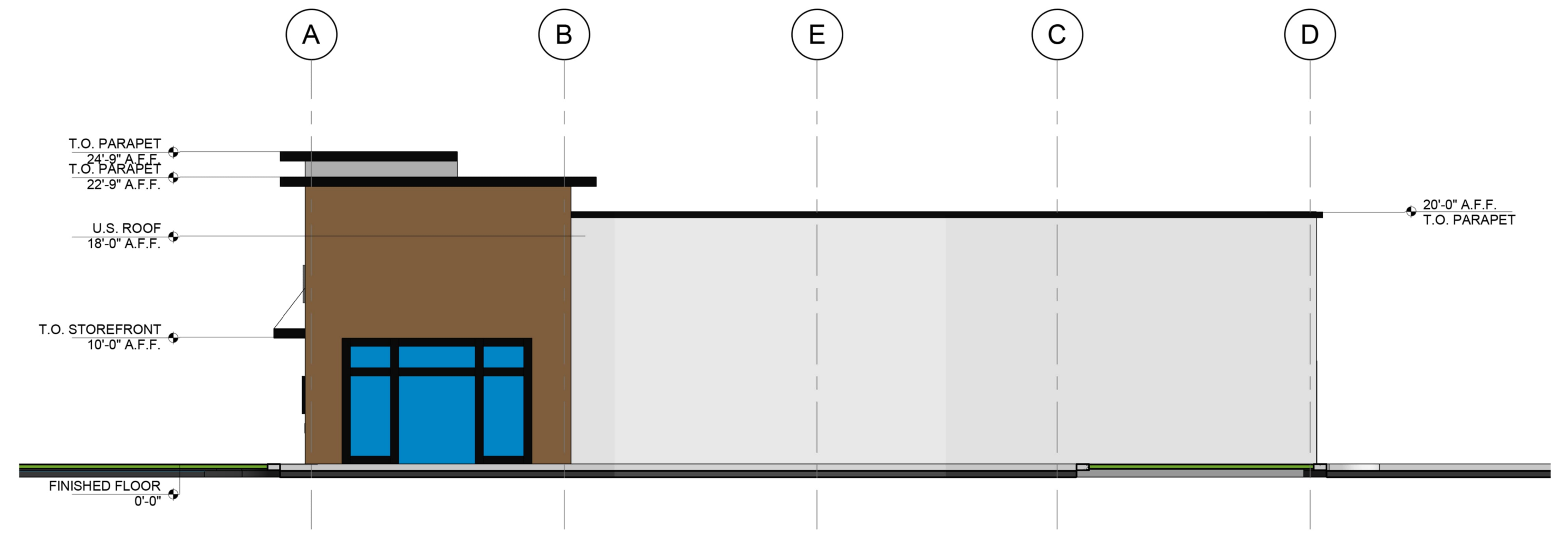


Boston + Brockton  
142 Crescent Street  
Brockton, MA 02302  
508.583.5603  
bkaarchitects.com

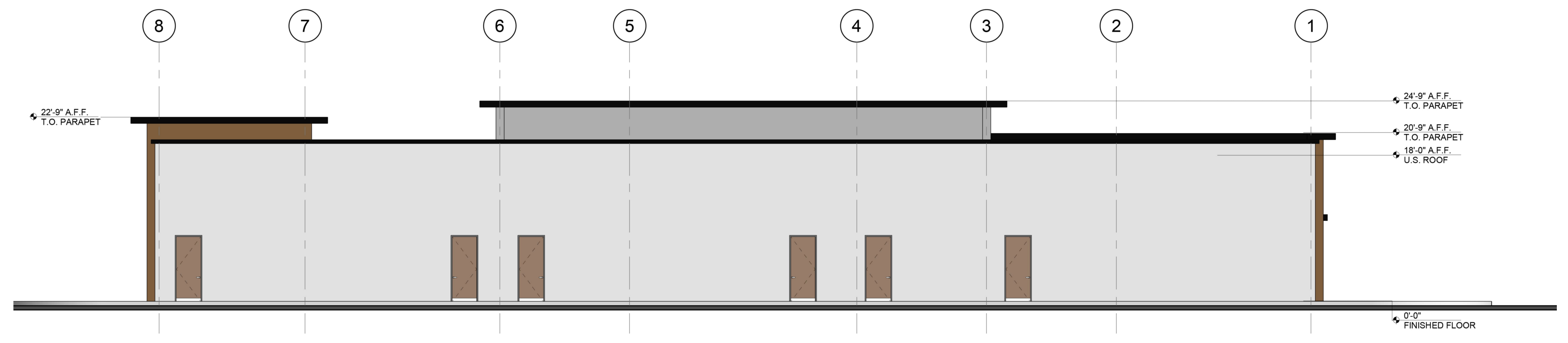




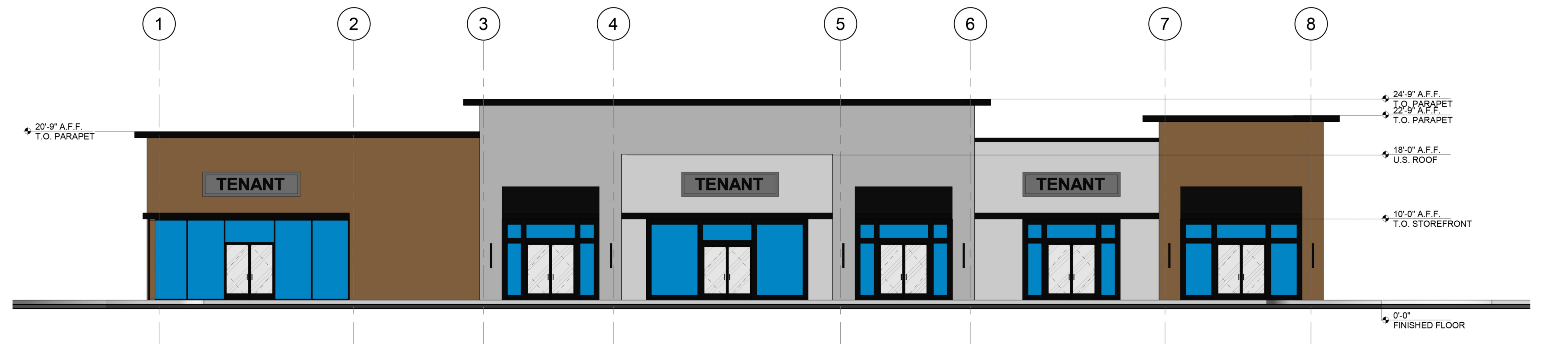
④ WEST ELEVATION  
Scale: 1/8" = 1'-0"



② EAST ELEVATION  
Scale: 1/8" = 1'-0"



③ NORTH ELEVATION  
Scale: 1/8" = 1'-0"



① SOUTH ELEVATION  
Scale: 1/8" = 1'-0"



Simsbury Retail Development

1263 Hopmeadow Street  
Simsbury, CT 06070

Prospect Enterprises, LLC

Starbucks - Exterior Rendering

Drawn by: LMH    BKA #    223066    Date: 05/25/23

A-10

**BKA**

ARCHITECTS

Boston + Brockton  
142 Crescent Street  
Brockton, MA 02302  
508.583.5603  
bkaarchitects.com



Simsbury Retail Development

1263 Hopmeadow Street  
Simsbury, CT 06070

Prospect Enterprises, LLC

Starbucks - Exterior Rendering

Drawn by: LMH

BKA #

223066

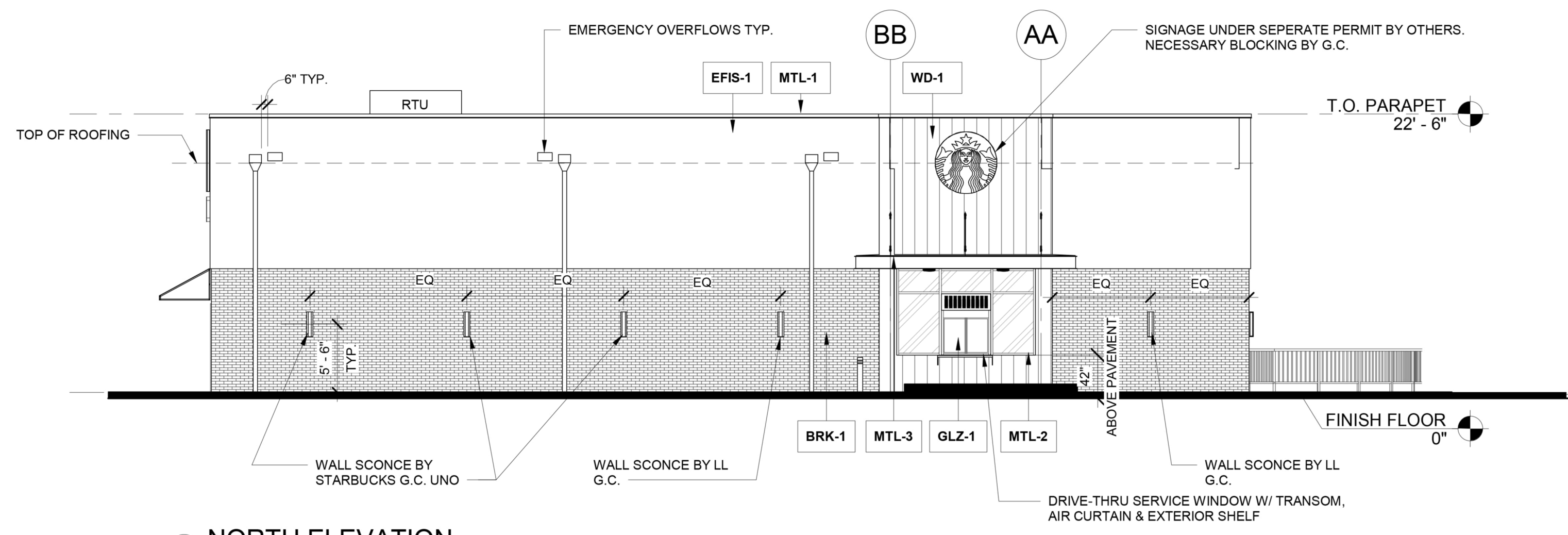
Date: 05/25/23

A-11

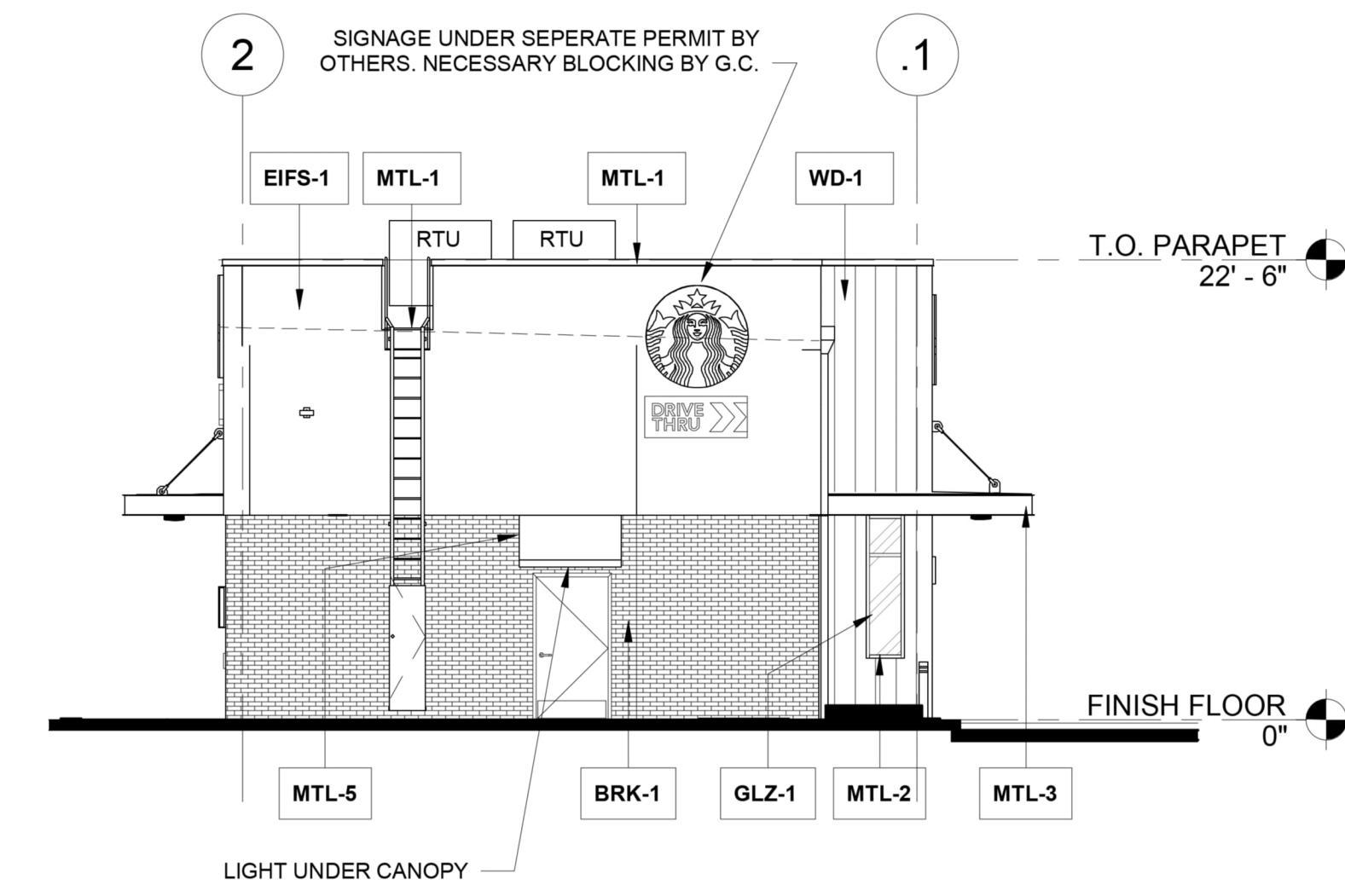
**BKA**

ARCHITECTS

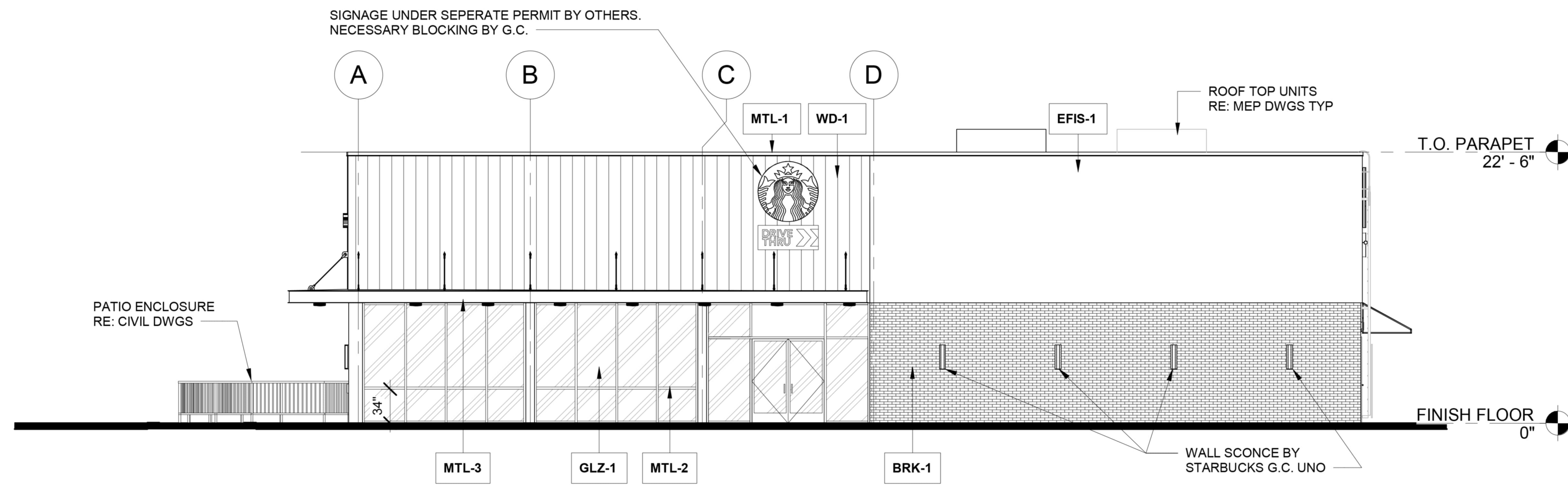
Boston + Brockton  
142 Crescent Street  
Brockton, MA 02302  
508.583.5603  
bkaarchitects.com



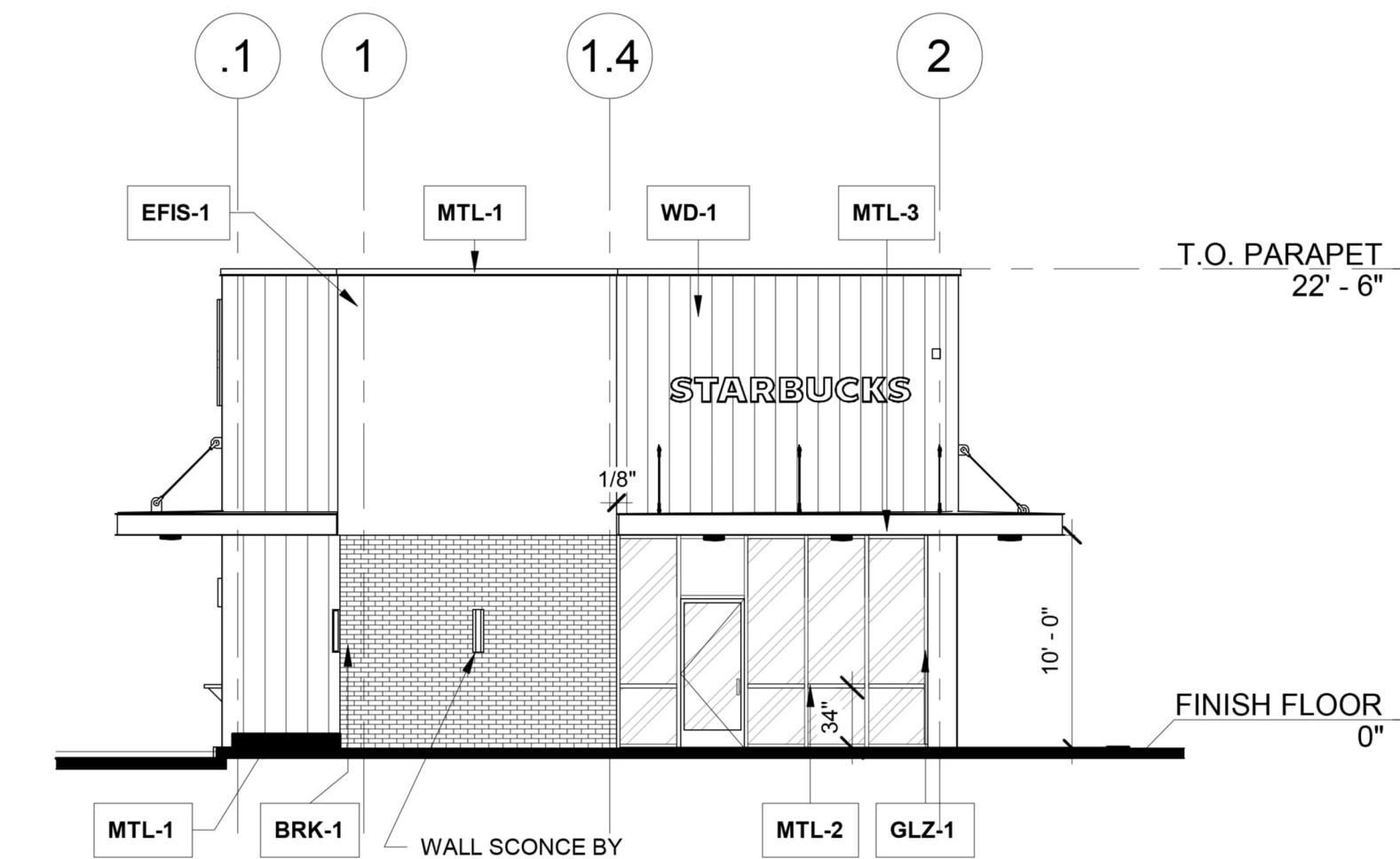
4 NORTH ELEVATION  
Scale 1/8" = 1'-0"



3 EAST ELEVATION  
Scale 1/8" = 1'-0"



2 SOUTH ELEVATION  
Scale 1/8" = 1'-0"



1 WEST ELEVATION  
Scale 1/8" = 1'-0"



Simsbury Retail Development

1263 Hopmeadow Street  
Simsbury, CT 06070

Prospect Enterprises, LLC

Chipotle - Exterior Rendering

Drawn by: LMH

BKA #

223066 | Date: 05/25/23

A-13

**BKA**

ARCHITECTS

Boston + Brockton  
142 Crescent Street  
Brockton, MA 02302  
508.583.5603  
bkaarchitects.com



Simsbury Retail Development

1263 Hopmeadow Street  
Simsbury, CT 06070

Prospect Enterprises, LLC

Chipotle - Exterior Rendering

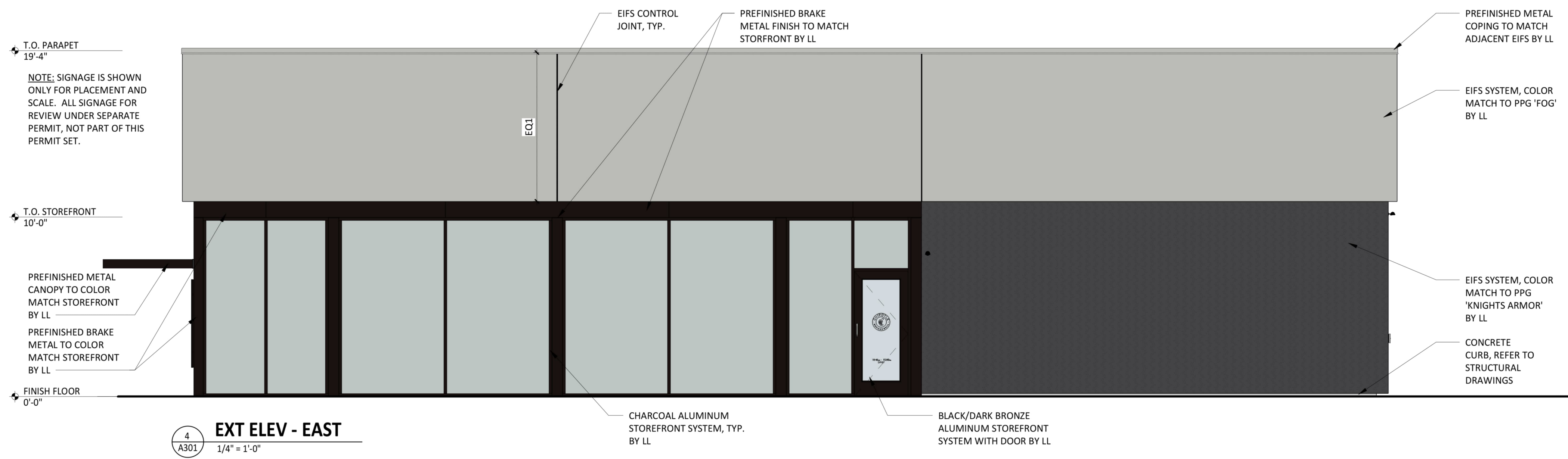
Drawn by: LMH    BKA #    223066    Date: 05/25/23

A-14

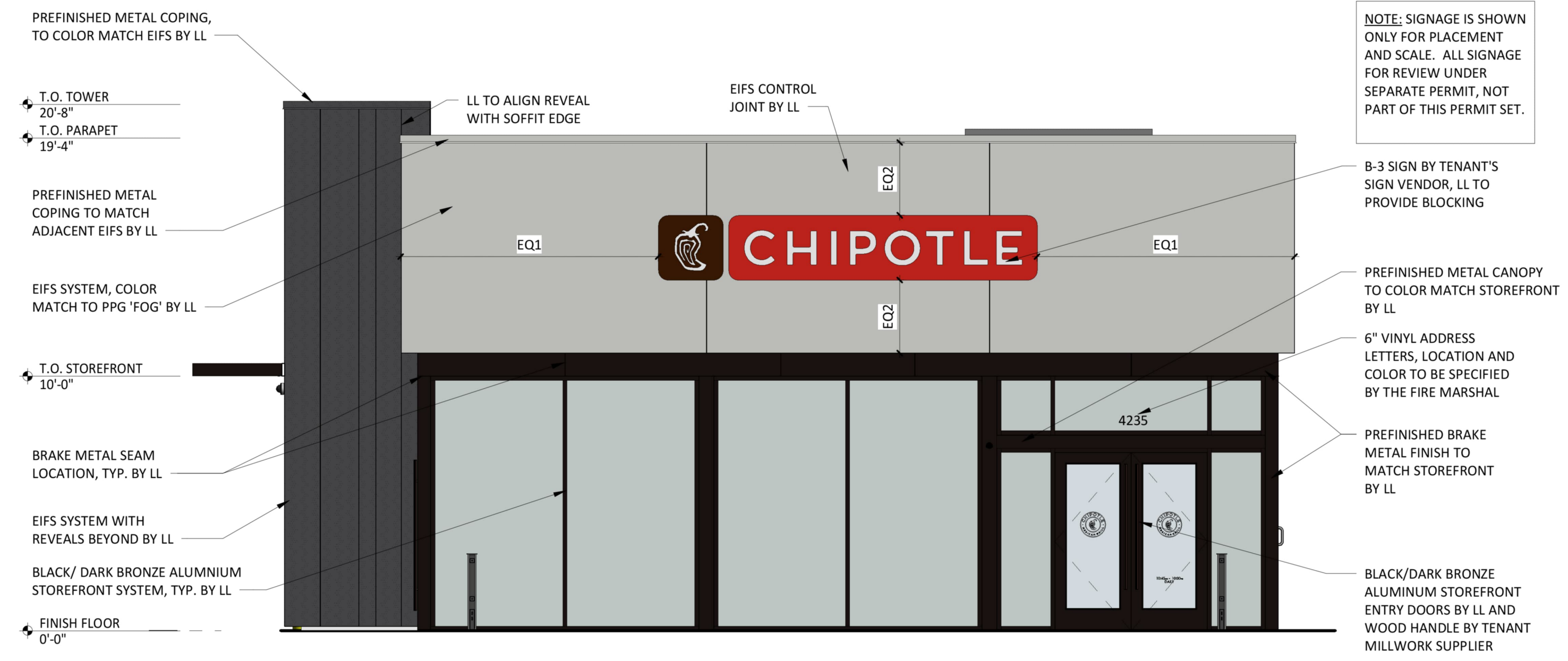
**BKA**

ARCHITECTS

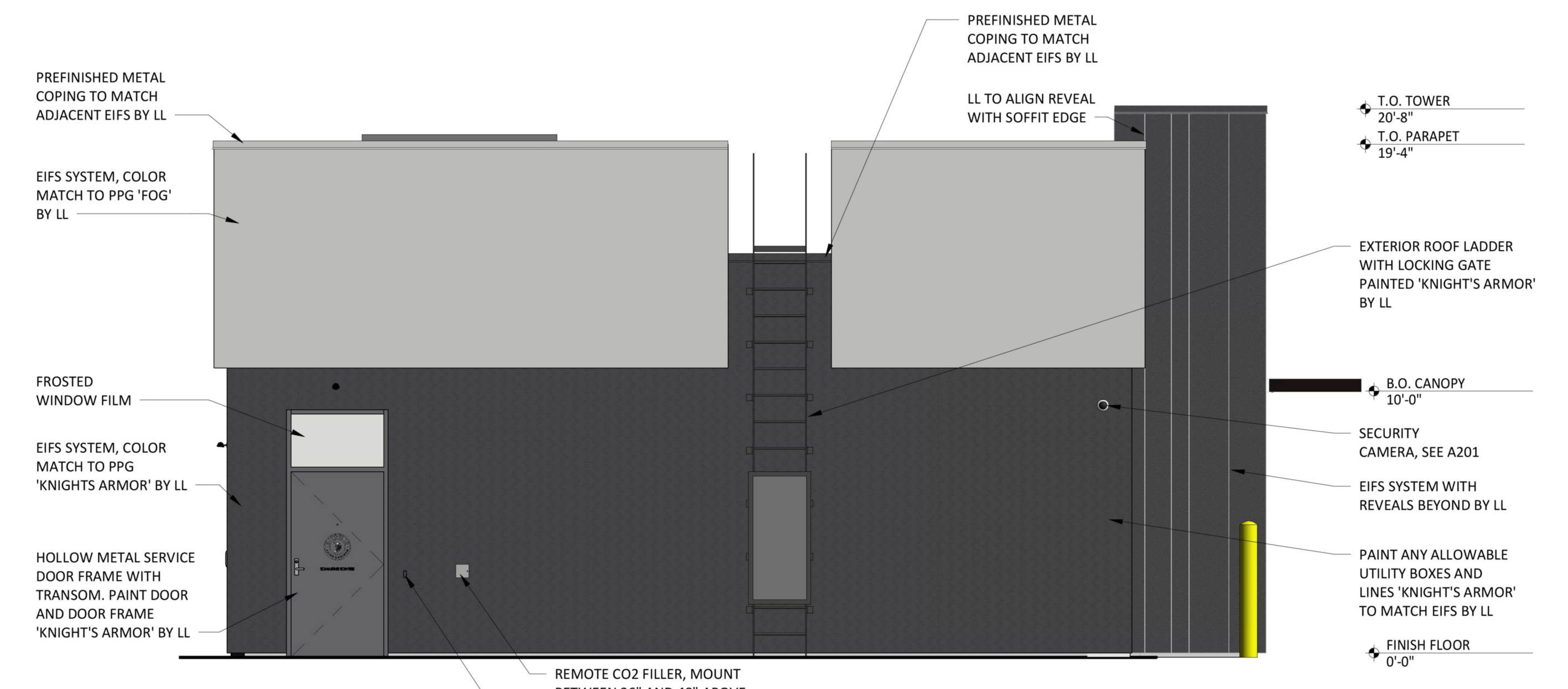
Boston + Brockton  
142 Crescent Street  
Brockton, MA 02302  
508.583.5603  
bkaarchitects.com



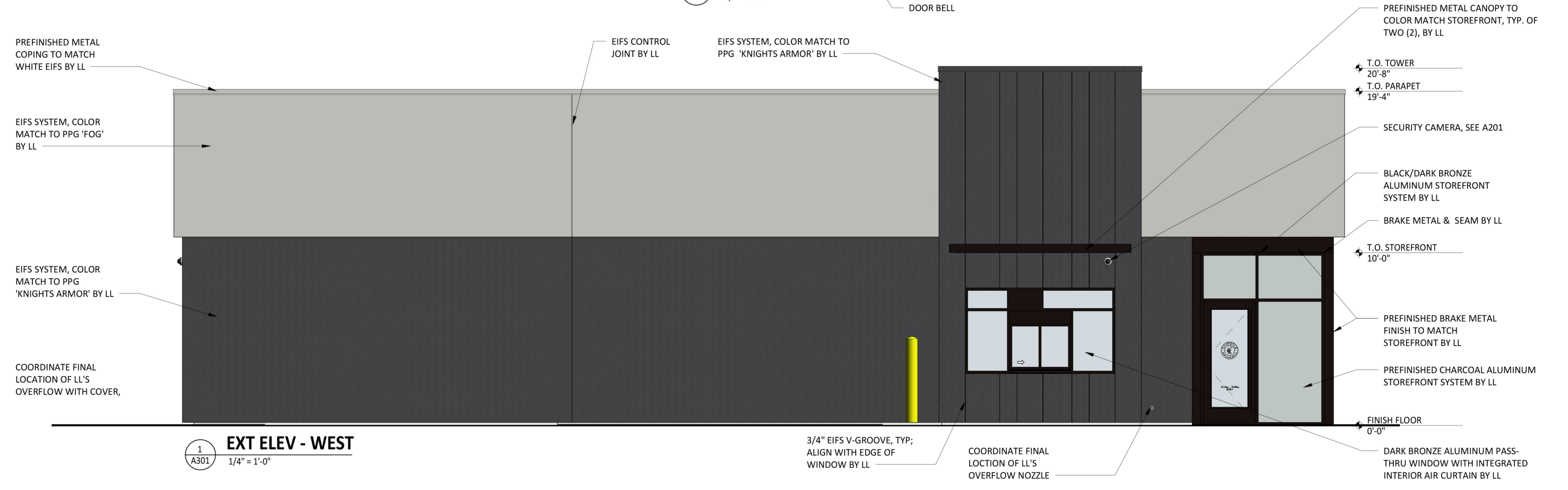
4  
A301  
EXT ELEV - EAST  
1/4" = 1'-0"



3  
A301  
EXT ELEV - SOUTH  
1/4" = 1'-0"



2  
A301  
EXT ELEV - NORTH  
1/4" = 1'-0"



1  
A301  
EXT ELEV - WEST  
1/4" = 1'-0"