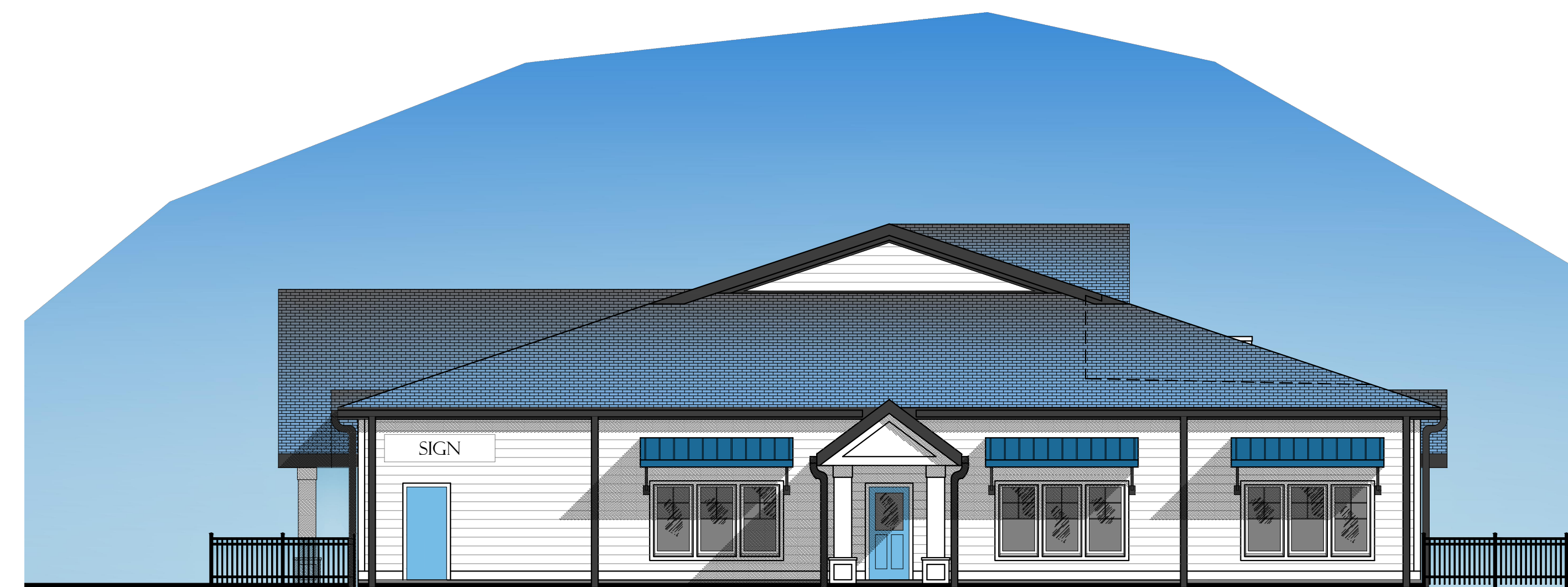


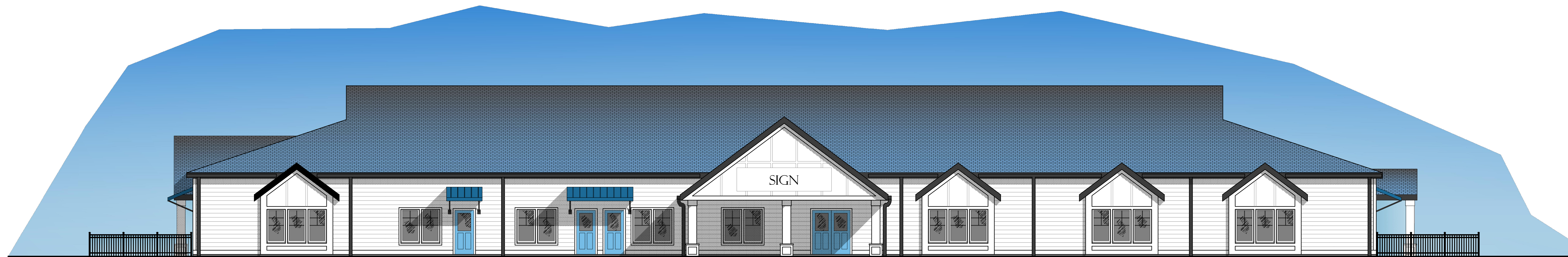
4  
SCH-2 PROPOSED EAST ELEVATION  
SCALE: 1/8" = 1'-0"



3  
SCH-2 PROPOSED NORTH ELEVATION  
SCALE: 1/8" = 1'-0"



2  
SCH-2 PROPOSED SOUTH ELEVATION  
SCALE: 1/8" = 1'-0"



1  
SCH-2 PROPOSED WEST ELEVATION  
SCALE: 1/8" = 1'-0"  
HOPMEADOW STREET