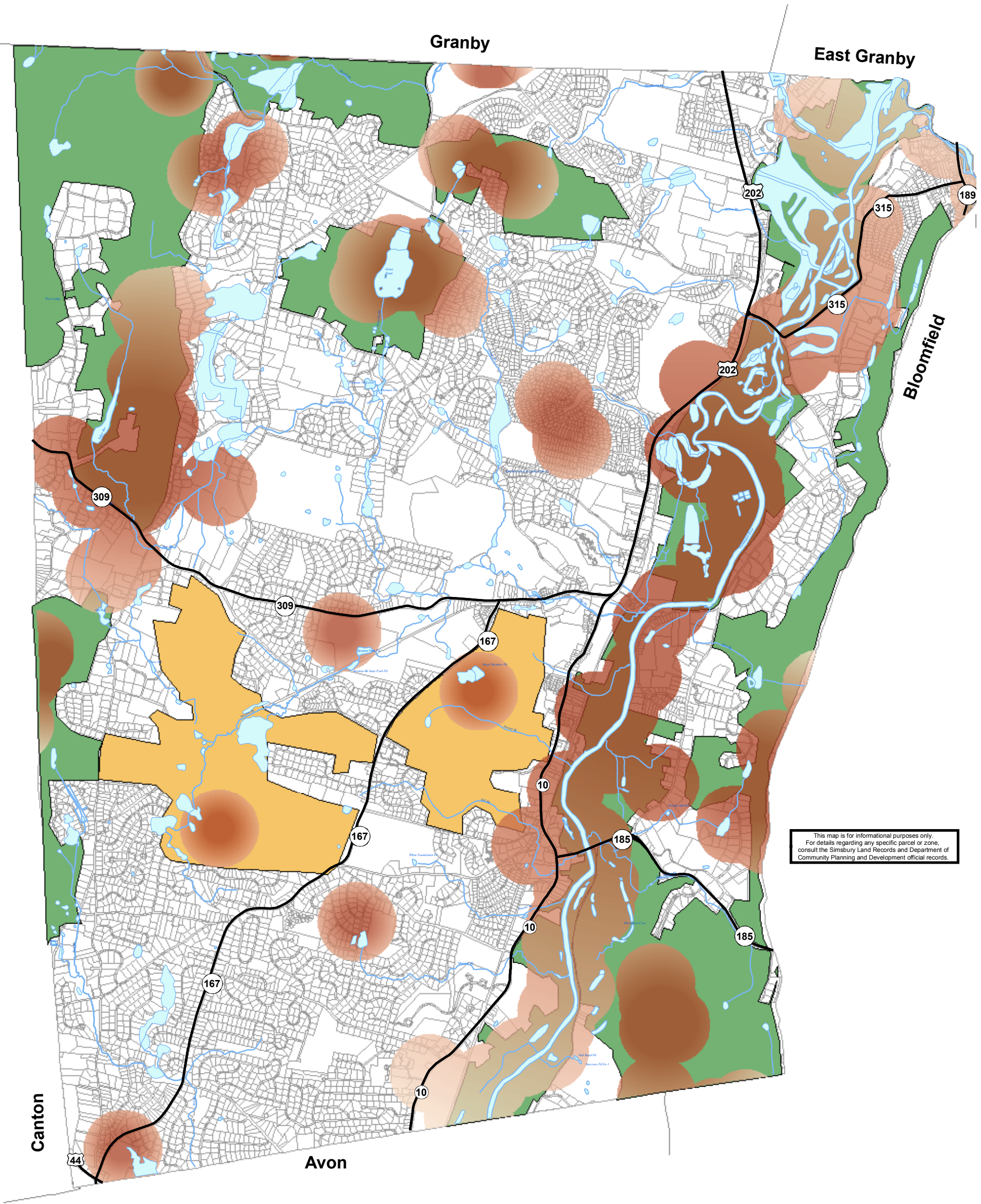




Town of Simsbury
Natural Diversity Resources



This map is for informational purposes only.
For details regarding any specific parcel or zone,
consult the Simsbury Land Records and Department of
Community Planning and Development official records.

Legend

- Natural Diversity Database - June 2007
- Primary Habitat Areas
- Secondary Habitats Areas

0 3,250 Feet
1 inch equals 3,250 feet

PREPARED BY THE
TOWN OF SIMSBURY
ENGINEERING DEPARTMENT
IN CONJUNCTION WITH:

**NEW ENGLAND
GEOSYSTEMS**
Geographic Information System Consultants
1000 Boston Post Road, Suite 200
Quincy, CT 06471-2000 401-778-1100 www.nengs.com

MAP EFFECTIVE 11/3/07