

**Handicap Accessibility Review  
ADA / CT 504 Assessment  
Eno Memorial Hall**

**For the  
Simsbury Senior Center**



754 Hopmeadow Street  
Simsbury, Connecticut 06070





June 16, 2014

Mr. Richard Ostop, Chairman  
Simsbury Public Building Committee  
PO Box 42  
Simsbury, CT 06070

Re: Eno Memorial Hall  
Handicap Accessibility Review - ADA / CT 504 Assessment

Dear Mr. Ostop:

Pursuant to your request, a field review of Eno Memorial Hall was carried out in June of 2014 for the purpose of identifying on-site obstacles to ADA / CT 504 compliance and/or matters of non-compliance.

Said assessment was carried out by Mr. Thomas P. Arcari, A.I.A., principal, and Mr. Michael P. Lombardi of Quisenberry Arcari Architects, LLC. Visual inspections, measurements, and photo documenting were employed to make the assessment.

As a result of our investigation numerous deficiencies were identified. Said deficiencies are demonstrated in the attached report.

If you have any further questions regarding this matter or would like to arrange a meeting with your committee and sub-committee to discuss the particulars of this assessment's findings, please do not hesitate to call me directly.

Sincerely,

A handwritten signature in blue ink, appearing to read 'T. P. Arcari'. Below the signature, the text 'Thomas P. Arcari, AIA' and 'Principal' is printed.

Thomas P. Arcari, AIA  
Principal

318 Main Street  
Farmington, CT 06032

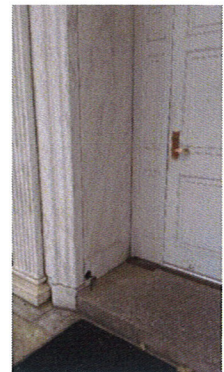
860.677.4594  
860.677.8534 FAX



### FRONT DEDICATED ENTRANCE

---

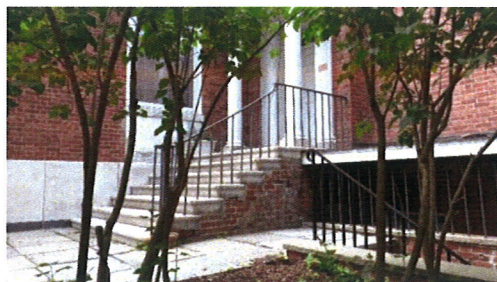
- No handicap parking on street
- Stairs and path- no accessible route
- Path gradient exceeds allowable pitch
- Inadequate door clearance- front door



### MID-LEVEL ENTRANCE

---

- No accessible path
- Inadequate door clearance
- Non-compliant hardware

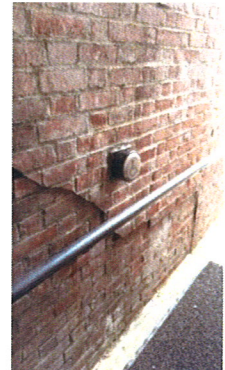
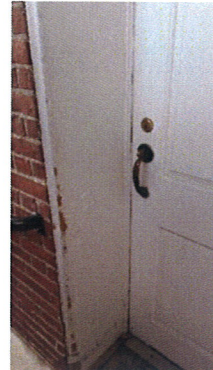




### LOWER-LEVEL ENTRANCE

---

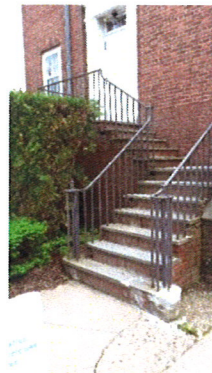
- Inadequate door clearance (ADA door operator present)
- Inadequate turning space at bottom of ramp / landing



### REAR SITE ENTRANCE

---

- Non-compliant door hardware
- No accessible path
- No HL access



### MAINTENACE ENTRANCE

---

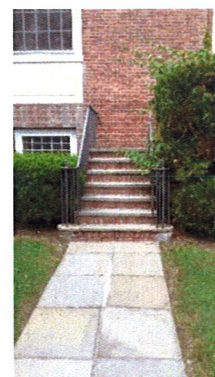
- No accessible path
- No HL access



### SOUTH EAST ENTRANCE

---

- Non- compliant door hardware
- No accessible path
- Ground surface- not flat
- Surface irregularities exceed 1/2" in height
- No HL access



### SOUTH WEST ENTRANCE

---

- No accessible path
- Inadequate door clearance
- Non- compliant door hardware
- No HL access



### MAIN LEVEL:

#### ENTRY VESTIBULE

#105

- Non- compliant door opening- door leafs are too small
- Non- compliant depth of vestibule
- Non- compliant door hardware



#### ROTUNDA

#104

- Space needs acoustic devices to reduce reverberation



### SOUTH PASSAGEWAY

---

- Non- compliant water fountain height and clearance
- Non- compliant thermostat height
- Non- compliant braille marking height
- Non- compliant door hardware
- Inadequate door clearance at auditorium door



### SOCIAL SERVICE DEPARTMENT

---

#112 & 113

- Non- compliant door hardware- closet
- Non- compliant thermostat height



### SOUTH STAIRWELL

---

#21

- Non- compliant braille markings height
- No accessible egress

#### NORTH PASSAGEWAY

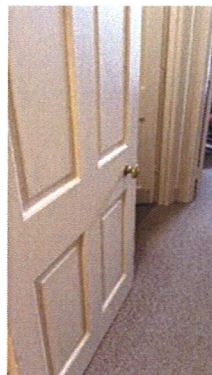
---

- Non- compliant braille markings height
- Non- compliant thermostat height
- Inadequate door clearance to auditorium
- Inadequate electrical panel height

#### ACCESSIBLE BATHROOM PASSAGEWAY

---

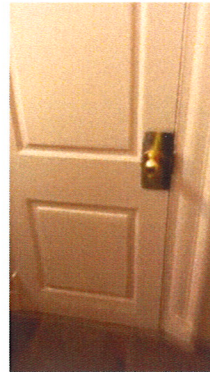
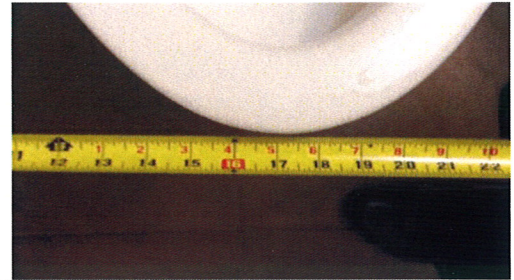
- Inadequate braille markings height
- Non- compliant door hardware



HC BATHROOM

#109 & 110

- Non- compliant braille marking height
- Non- compliant door hardware
- Non- compliant grab-bar
- Non- compliant sink (sink to close)
- Non- compliant toilet (toilet too close to wall)

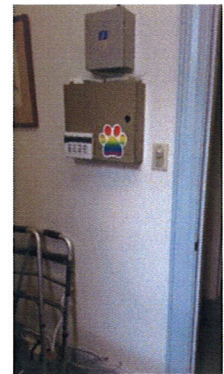
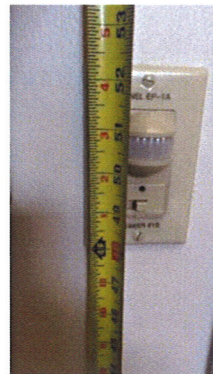
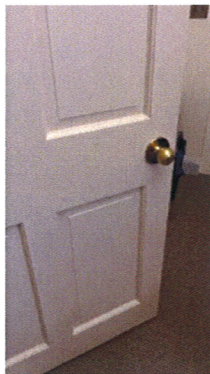
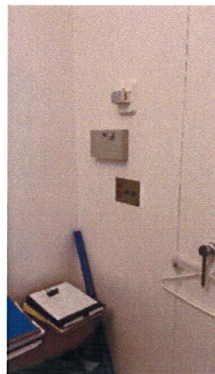




SMALL CONFERENCE ROOM

#108

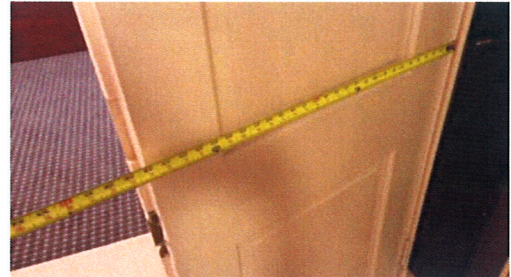
- Non-compliant thermostat, light controls and security system height
- Non-compliant door hardware



BLUE ROOM

#107

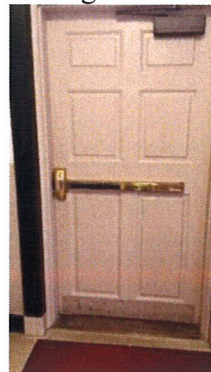
- Non- compliant door hardware
- Inadequate door leaf width
- Non- compliant thermostat height



NORTH STAIRWELL

#11

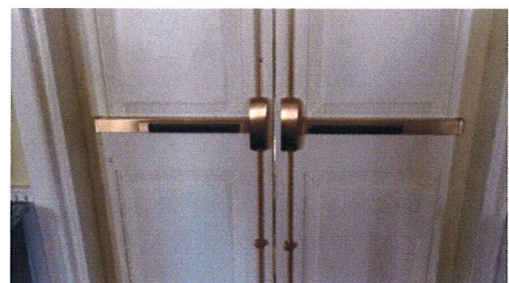
- Inadequate braille markings height
- Only stairwell is HL complaint egress \*lower level only\*



AUDITORIUM

#2 & 101

- Inadequate door leaf width (entrance doors to auditorium)
- Non- compliant thermostat height
- No accessible access to stage
- No accessible egress from rear of auditorium
- Non- compliant fire alarm height
- Non- compliant lighting controls
- Space needs acoustic device



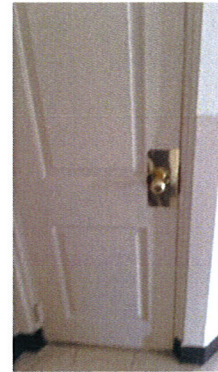


## **SECOND FLOOR:**

### **NORTH STAIRWELL**

**#12**

- Inadequate door leaf width
- Non- compliant door hardware
- Non- compliant fire alarm height



### **ELEVATOR VESTIBLE**

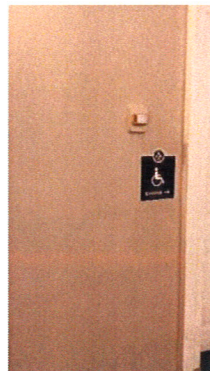
**#02**

- Non- compliant door clearance

### **ROTUNDA**

**#204 & 205**

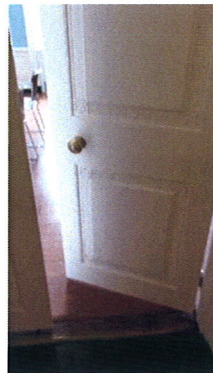
- Space needs acoustic device
- Non- compliant thermostat height
- Non- compliant door leaf width to North stairwell and elevator



NORTH CONFERENCE ROOM

#207

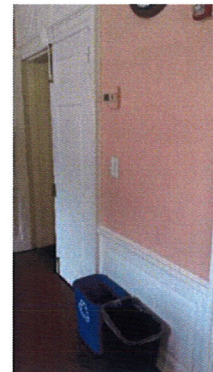
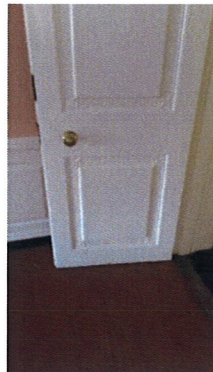
- Inadequate door leaf width
- Non- compliant thermostat height
- Non- compliant storage door hardware



SOUTH CONFERENCE ROOM

#206

- Inadequate door leaf width
- Non- compliant thermostat height
- Non- compliant storage door hardware



SOUTH STAIRWELL

#22

- Inadequate door leaf width
- Non- compliant door hardware
- Non- compliant door hardware for custodian
- Inadequate fire alarm height
- No accessible egress



BALCONY

#203

- Non- accessible
- Control room- Inadequate door and non- compliant door hardware





**LOWER LEVEL:**

YOUTH ROOM

#002-001

- Inadequate door width
- Non- compliant storage door hardware and clearance



NORTH STAIRWELL

#10

- Non- compliant security system height

FOOD PANTRY

#012

- Non- compliant door hardware
- Inadequate door width

NORTH PASSAGEWAY



## OLD COURT ROOM

#004

- Non- compliant door hardware
- Inadequate door width

## MEN'S HC ROOM

#005

- Non- compliant urinal- clearance and height
- Non- compliant mirror- height and angle
- Inadequate thermostat height
- Inadequate accessories height (towels)
- Inadequate storage cabinet height



## ROTANTA

#003

- Space needs acoustic device

## SOUTH PASSAGEWAY

- Non- compliant electrical panel height

WOMEN'S HC ROOM

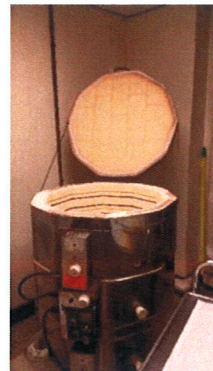
#008

- Non- compliant mirror
- Inadequate accessories height (towels)
- Inadequate storage cabinet height



KILN ROOM

- Inadequate door width and clearance
- Non- compliant door hardware
- Non- compliant fan controls height





## SERVING ROOM

#012

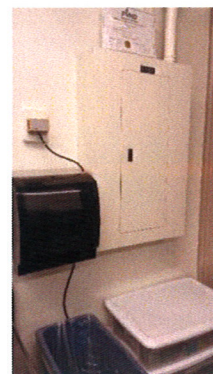
- Inadequate storage cabinet (percentage of shelves out of reach exceeds the allowable limit)



## KITCHEN

#011

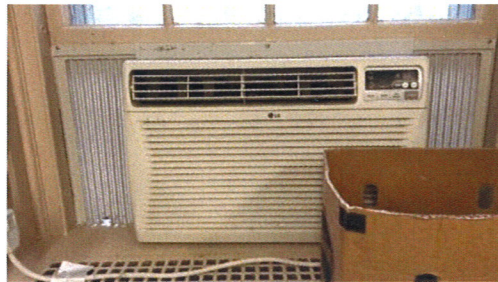
- No HC work station
- Non- compliant electrical panel height
- Stove non- accessible
- Non- compliant hood controls
- Hand wash and dish wash sink non- accessible



## CRAFT ROOM

#009

- Inadequate door leaf width
- Non- compliant door hardware
- Non- compliant accessories height (towels)
- Non- compliant sink height
- Non- compliant thermostat height



## PARKING

- HC parking spaces gradient exceeds the allowable percentage
- pavement torn up
- Accessible pathway surface irregularities exceed 1/2" in height



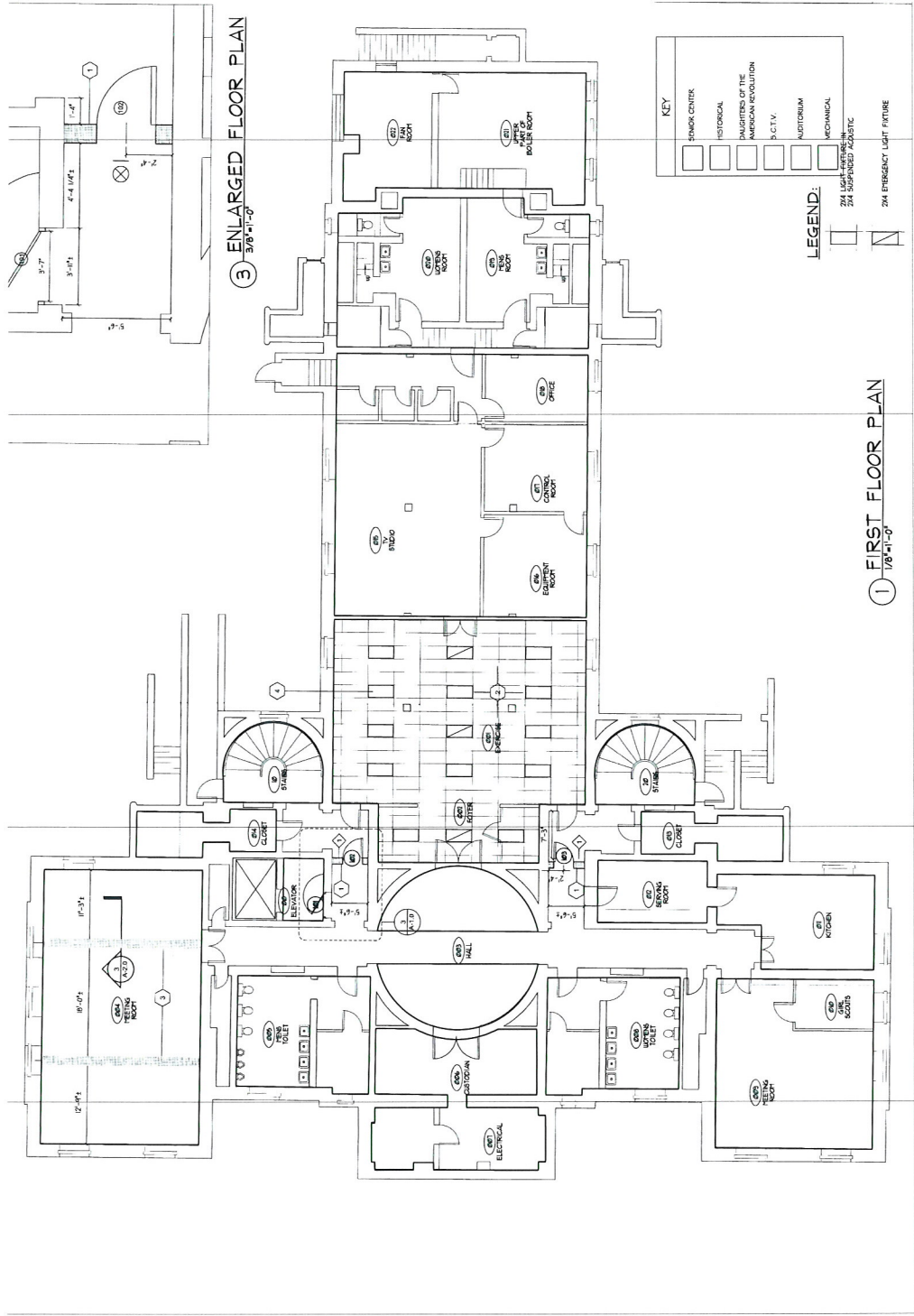
**GENERAL:**

---

- Building has sprinkler system
- Non- compliant braille marking height
- Exterior windows are not operable via HL patrons
- No foot candle- lighting tests were executed
- Existing building is located on the National Register of Historic Places

This report was prepared by Mr. Thomas P. Arcari, A.I.A., principal, Quisenberry Arcari Architects, LLC. If you have any questions regarding the assessment, please forward your inquiries directly to Mr. Arcari at [tom@qa-architects.com](mailto:tom@qa-architects.com).





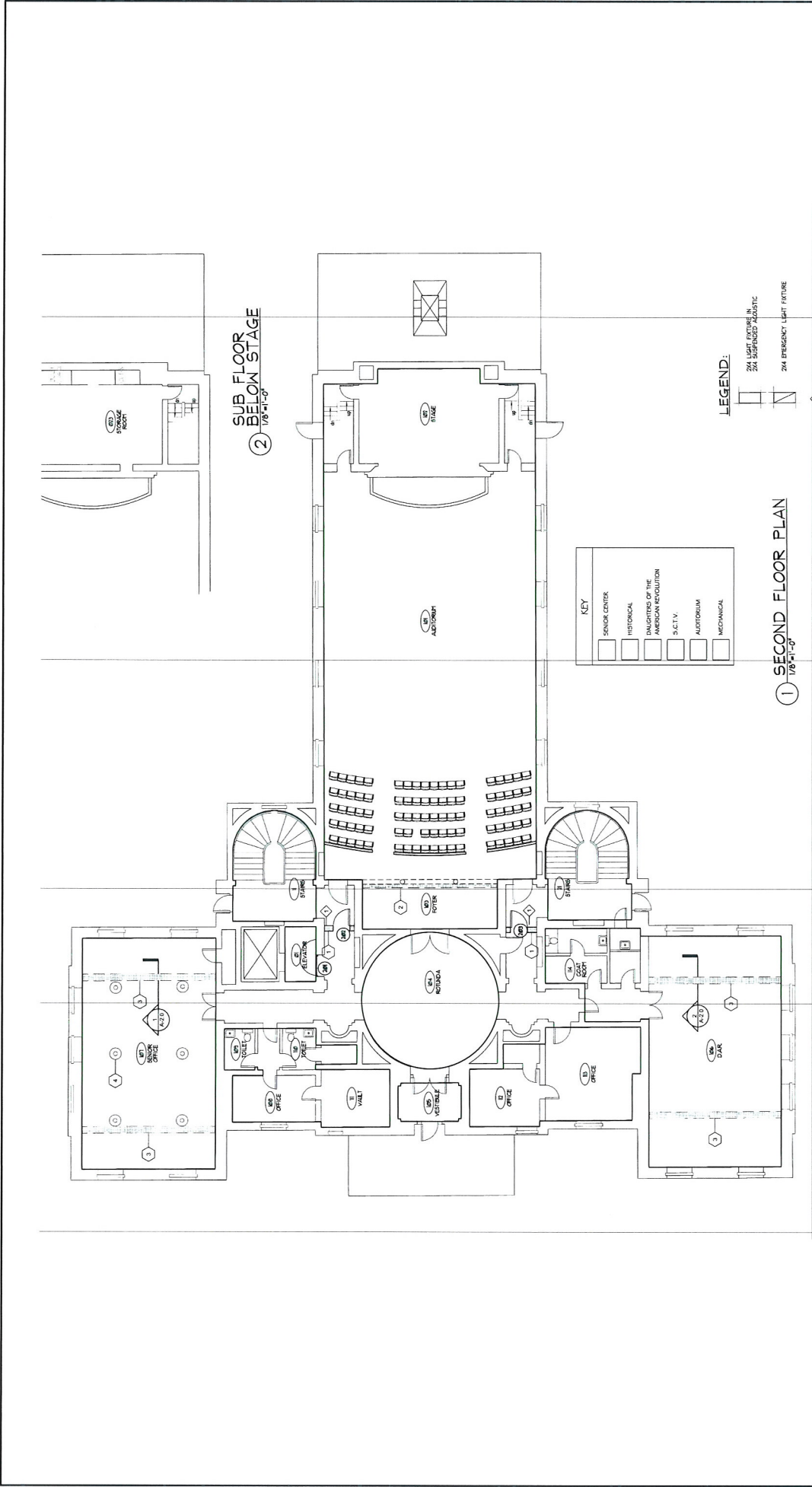
Feasibility / Needs Assessment of  
Eno Memorial Hall

For the  
**Simsbury Senior Center**

254 Hopmeadow Street

Simsbury, Connecticut





Feasibility / Needs Assessment of

Eno Memorial Hall

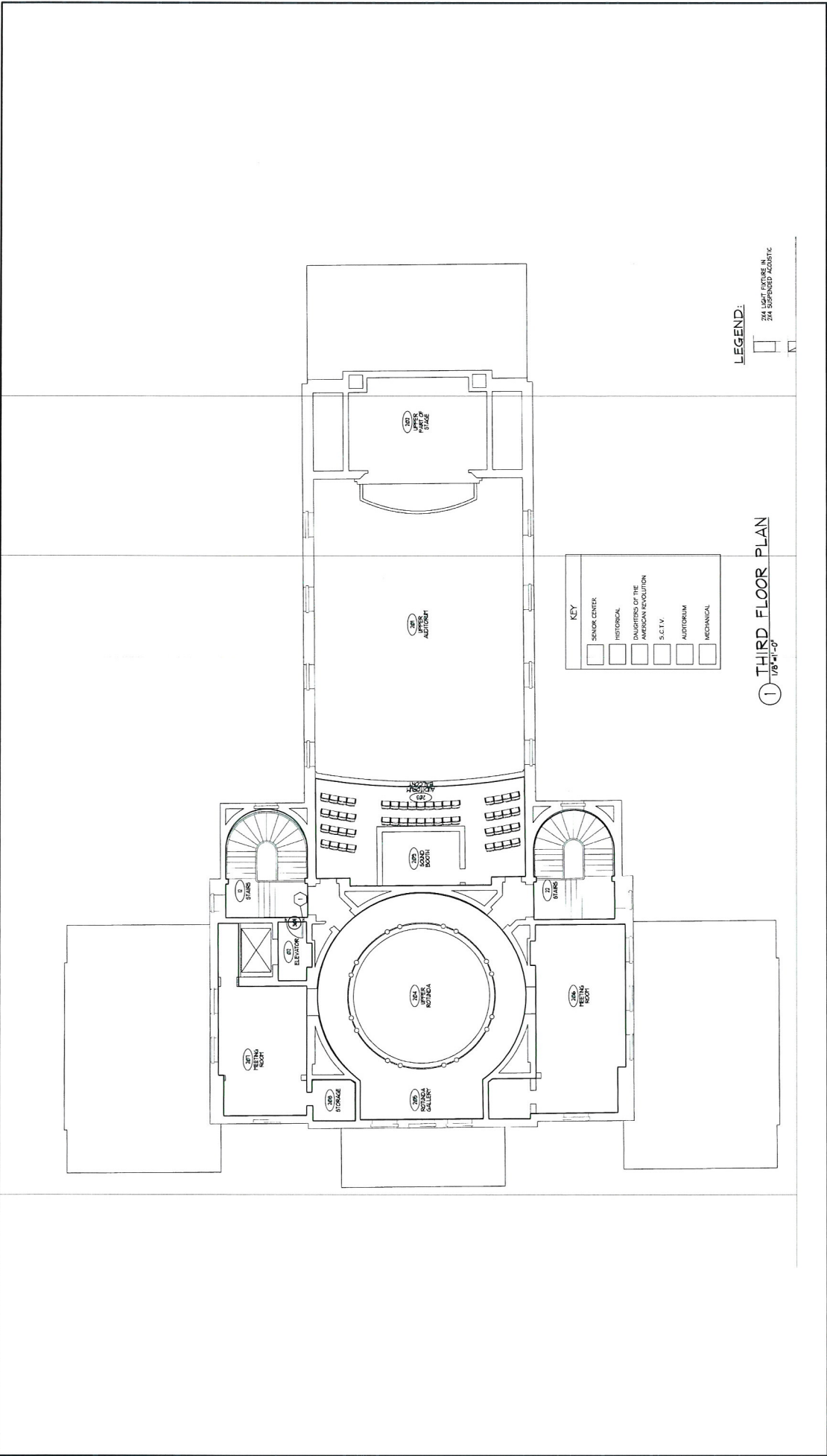
For the

Simsbury Senior Center

254 Hopmeadow Street

Simsbury, Connecticut





# Feasibility / Needs Assessment of Eno Memorial Hall For the

## Simsbury Senior Center

254 Hopmeadow Street

Simsbury, Connecticut









