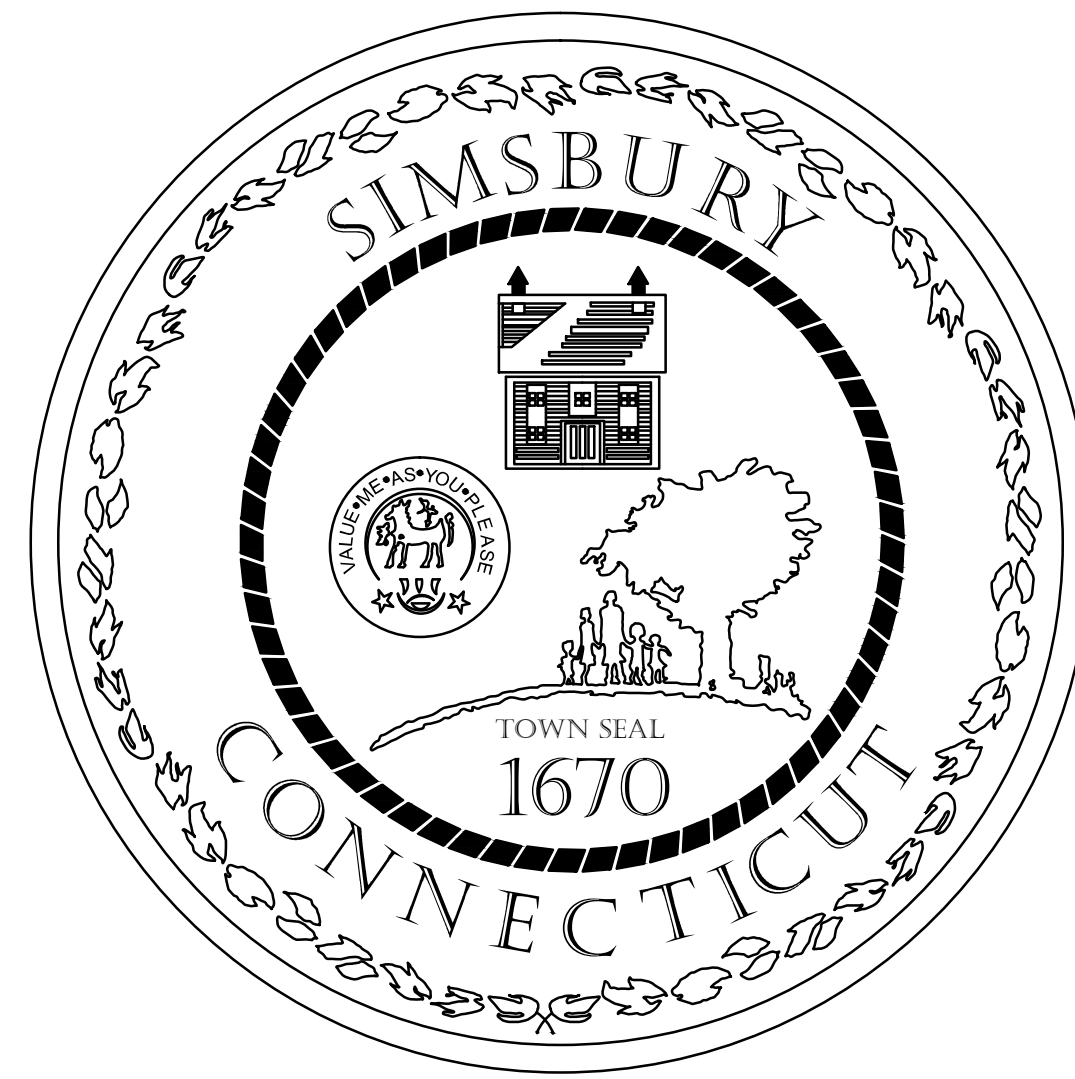
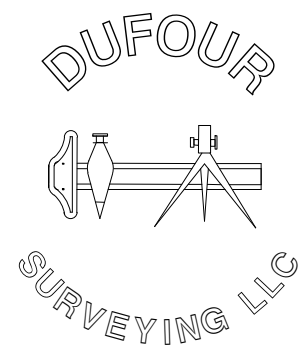


PROPOSED DRAINAGE IMPROVEMENTS NOD ROAD

DEPARTMENT OF PUBLIC WORKS
66 TOWN FOREST ROAD
SIMSBURY, CONNECTICUT



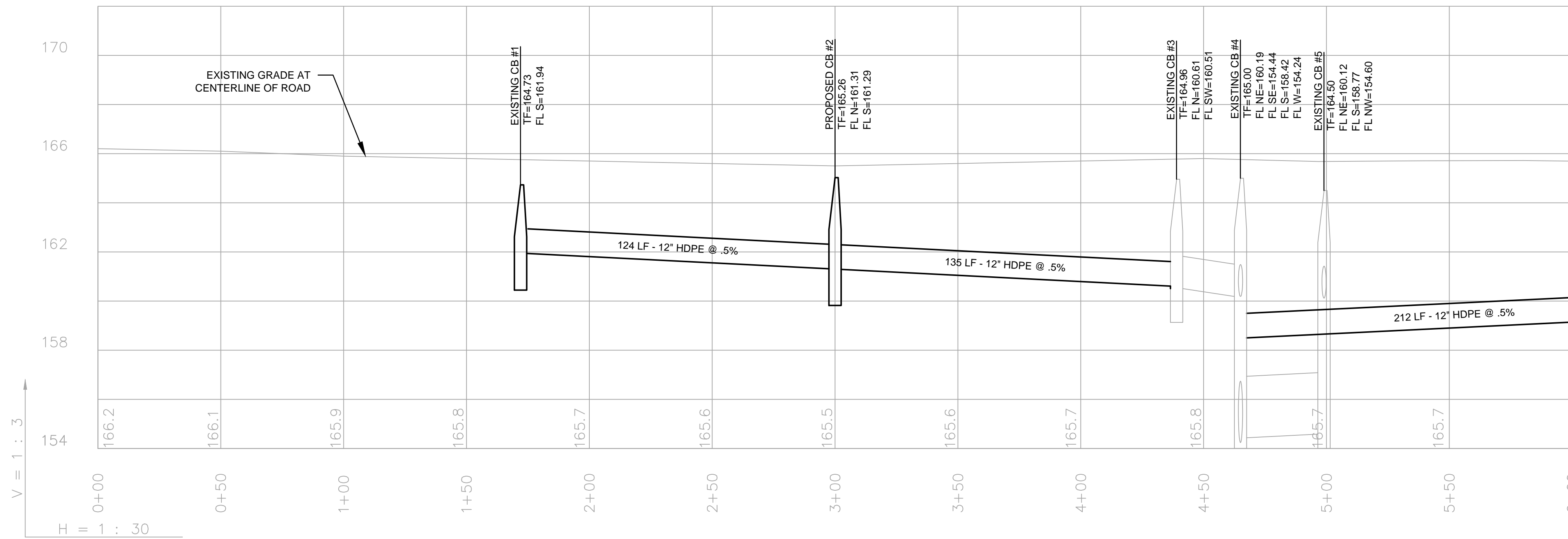
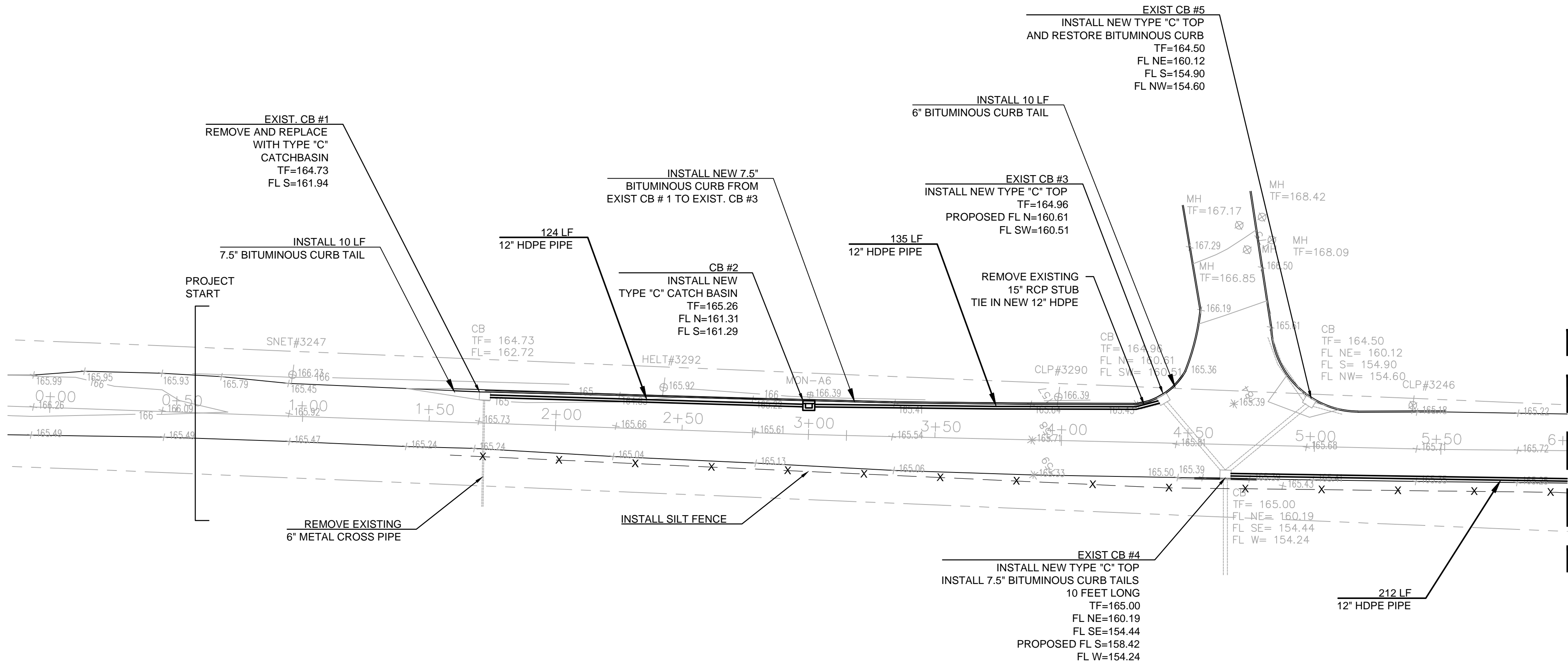
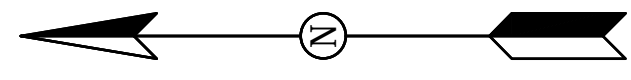
Survey Prepared By:



DUFOUR SURVEYING LLC
575 NORTH MAIN STREET
BRISTOL, CONNECTICUT 06010
860-314-0502 860-738-0222

Design Prepared By:

SIMSBURY DEPARTMENT OF PUBLIC WORKS
66 TOWN FOREST ROAD
SIMSBURY, CONNECTICUT 06070
860-658-3222



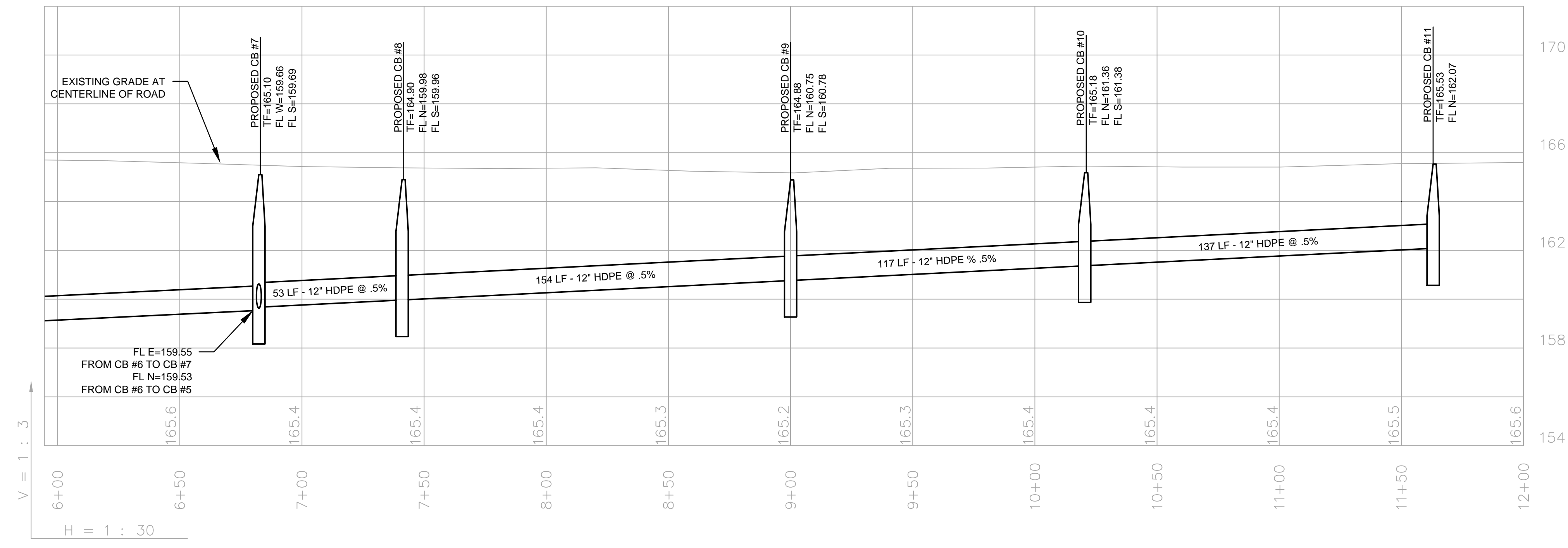
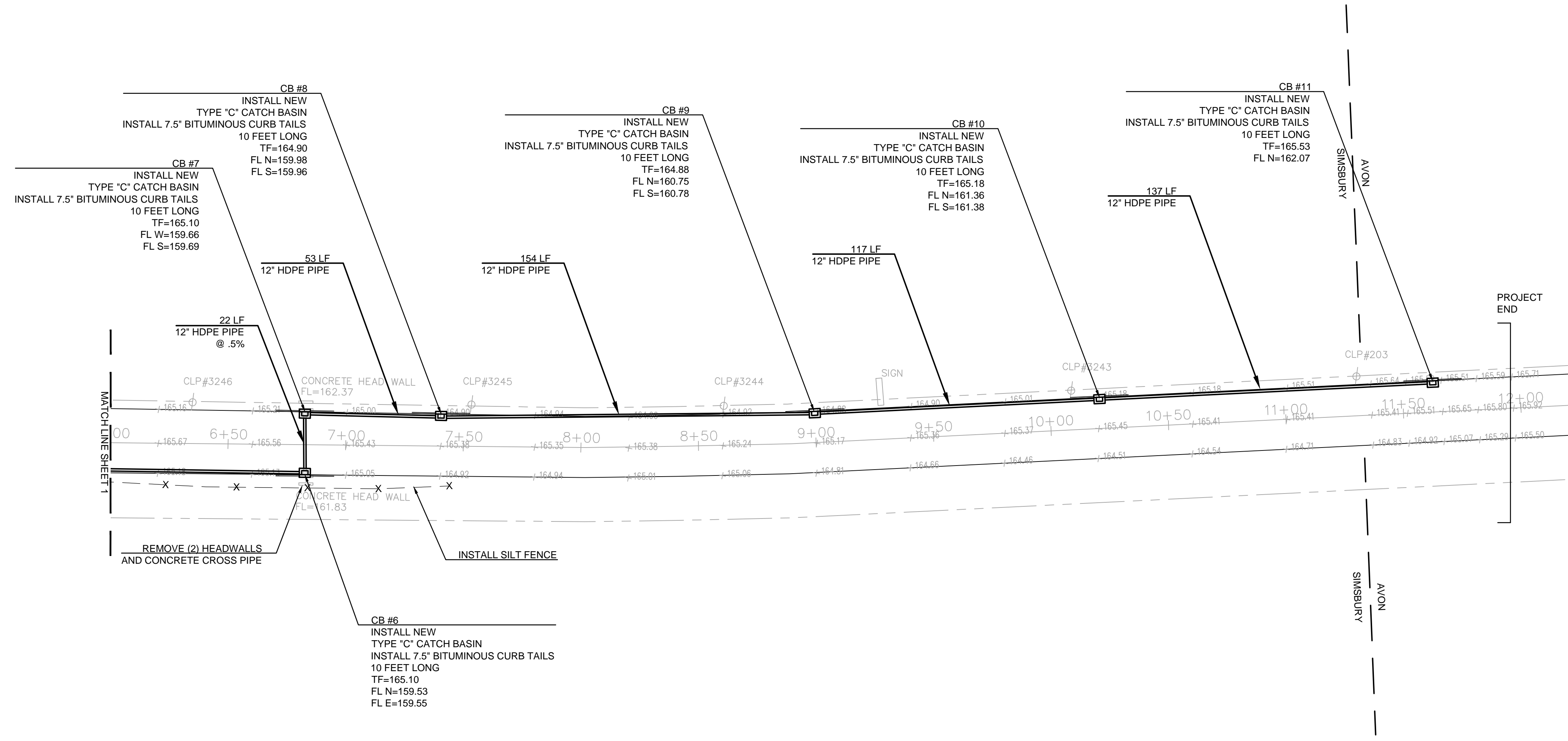
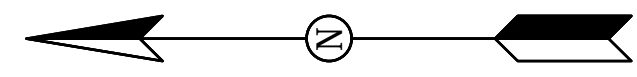
NO	REVISION	DATE	BY
1	DPW COMMENTS	7/17	JJC



TOWN OF SIMSBURY
DEPARTMENT OF PUBLIC WORKS
66 TOWN FOREST ROAD
SIMSBURY CONNECTICUT

NOD ROAD DRAINAGE IMPROVEMENTS
PLAN AND PROFILE

DRAWN BY: JJC	CHECKED BY:
DATE: JULY 24, 2017	SCALE: 1" = 30'



NO.	1	DPW COMMENTS
REVISION		
DATE	7/17	JJC
BY		

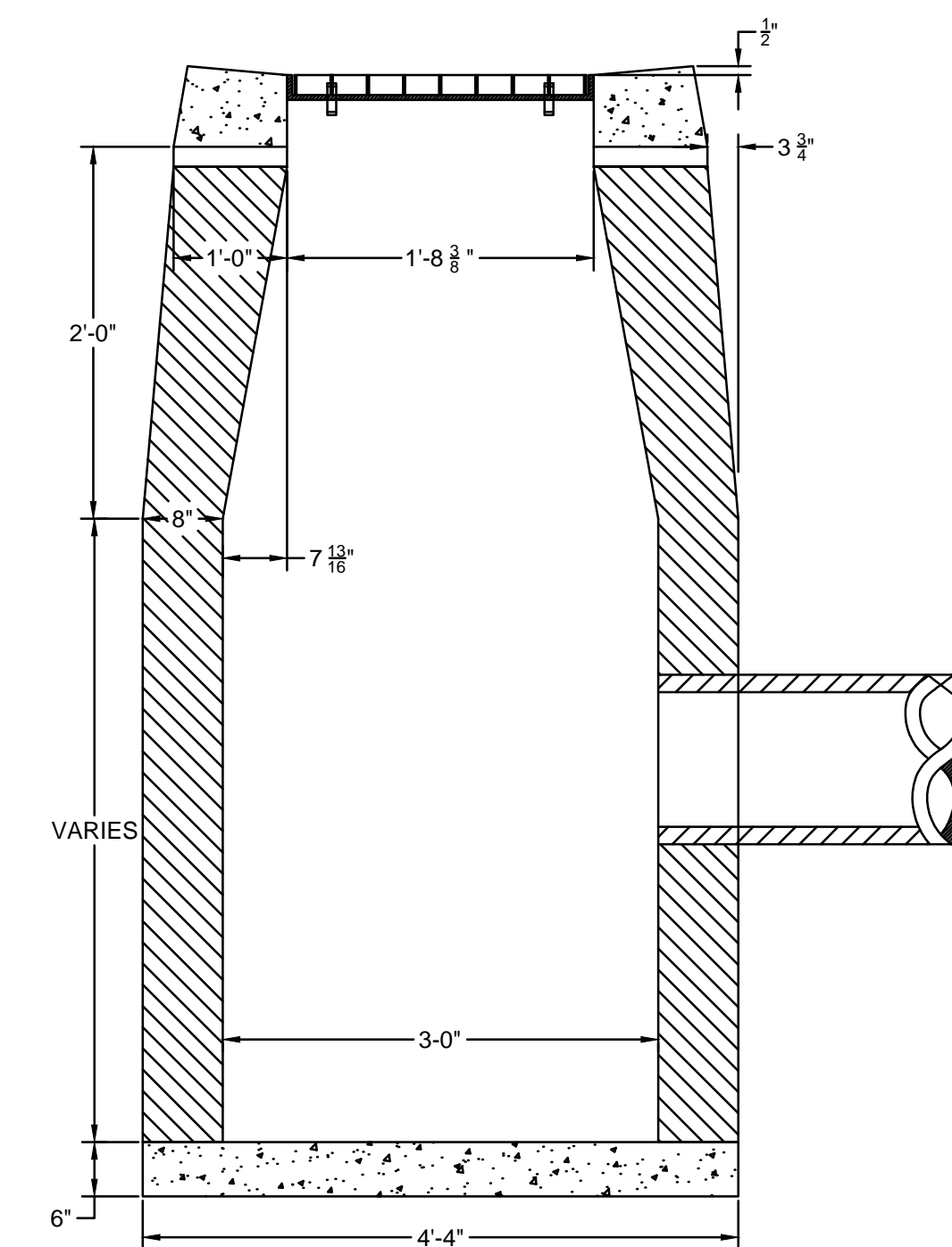
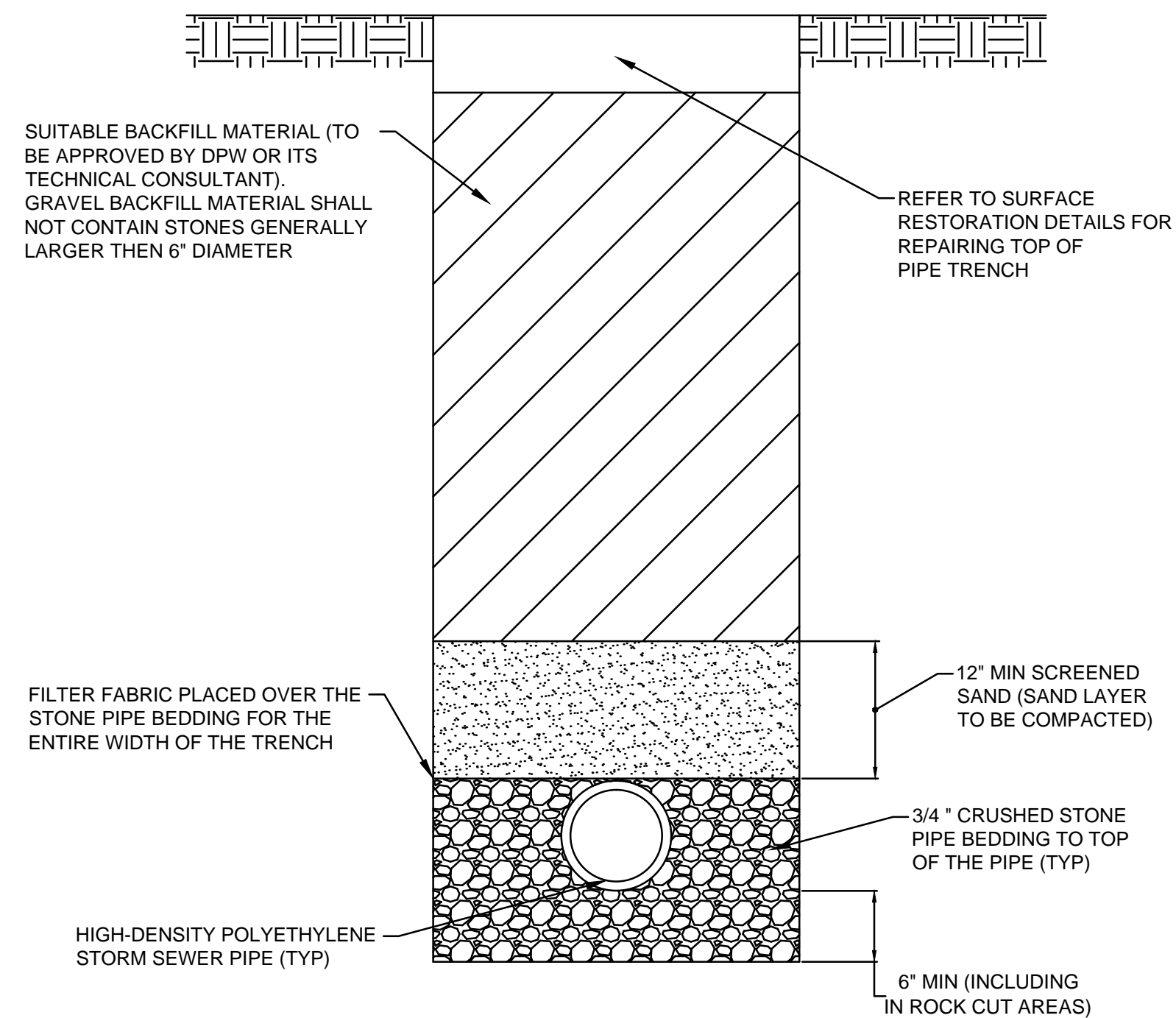


TOWN OF SIMSBURY
 DEPARTMENT OF PUBLIC WORKS
 66 TOWN FOREST ROAD
 SIMSBURY CONNECTICUT

NOD ROAD DRAINAGE IMPROVEMENTS
 PLAN AND PROFILE

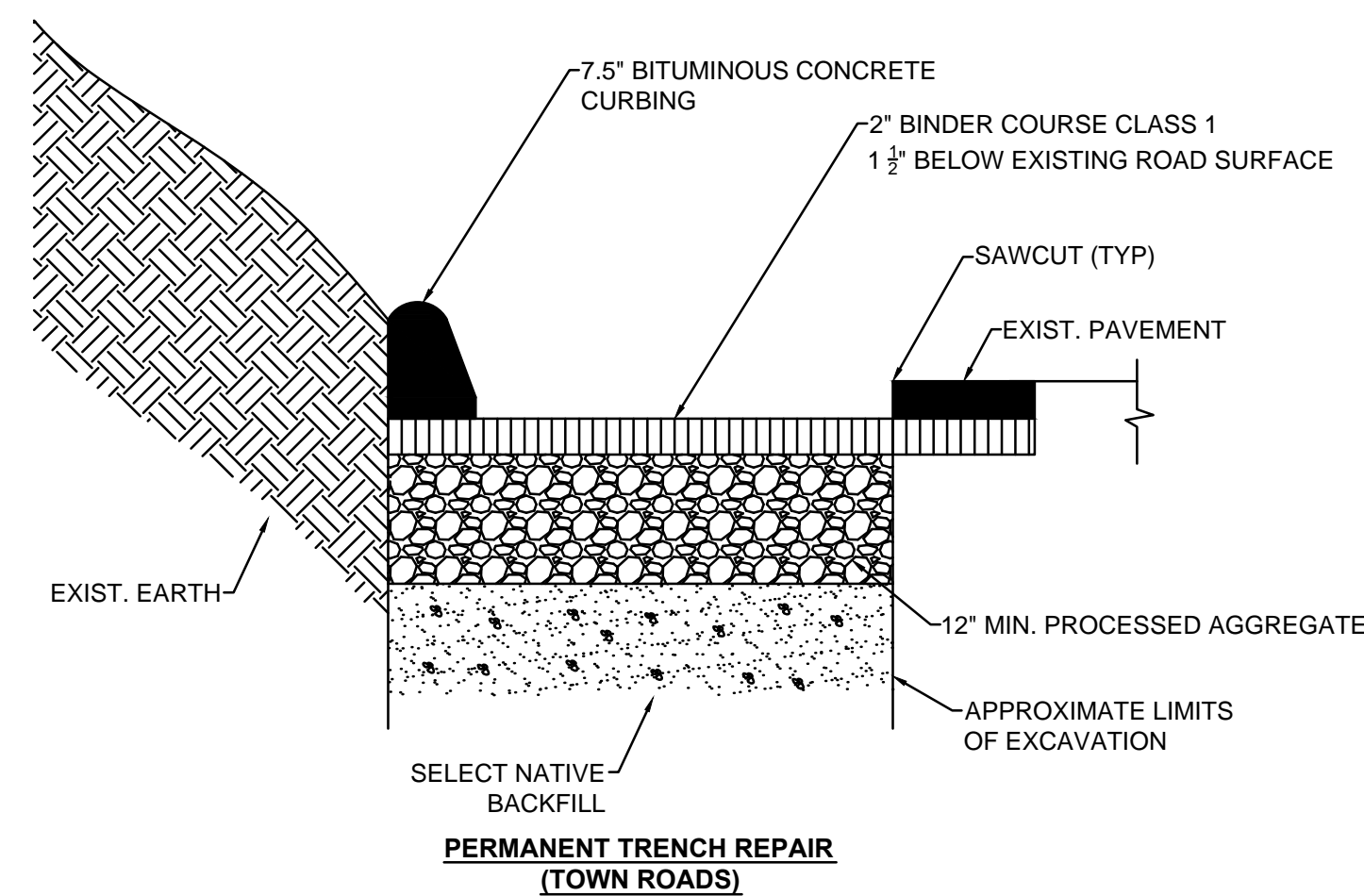
DRAWN BY:	JJC	CHECKED BY:	
DATE:	JULY 24, 2017	SCALE:	1" = 30'

**HIGH-DENSITY POLYETHYLENE
STORM SEWER SERVICE TRENCH**



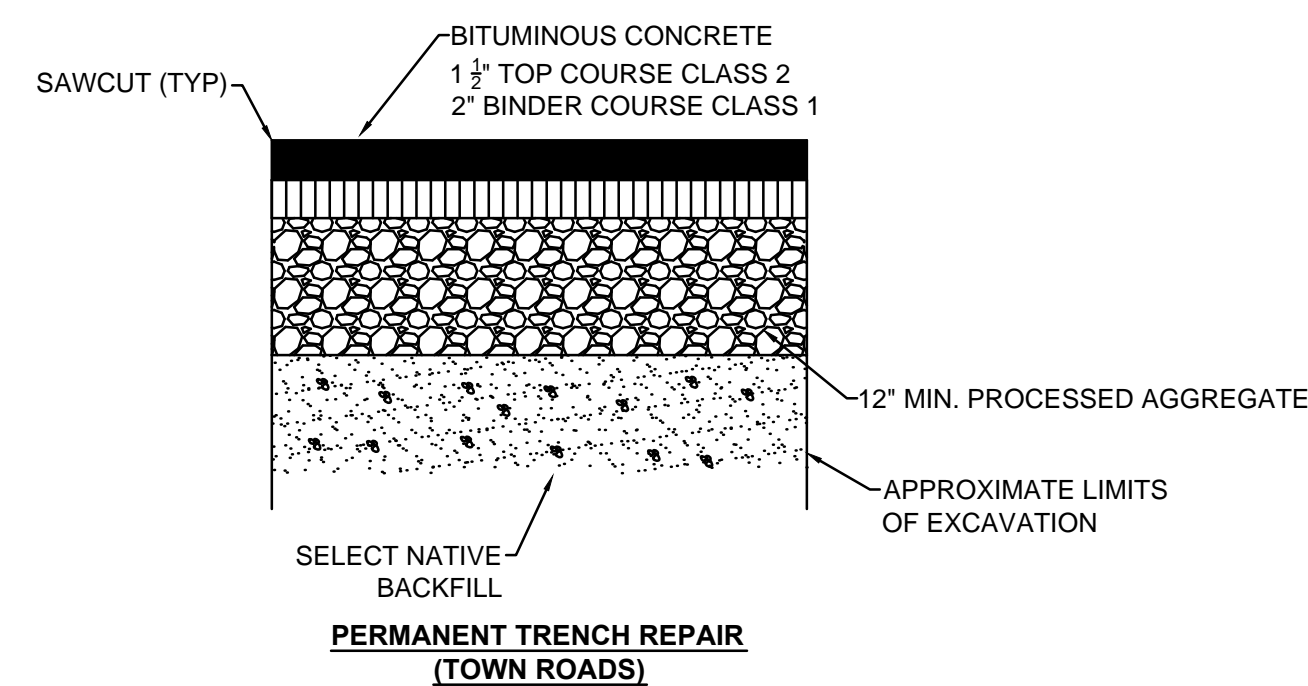
TYPE "C-L" CATCH BASIN

PERMANENT TRENCH REPAIR

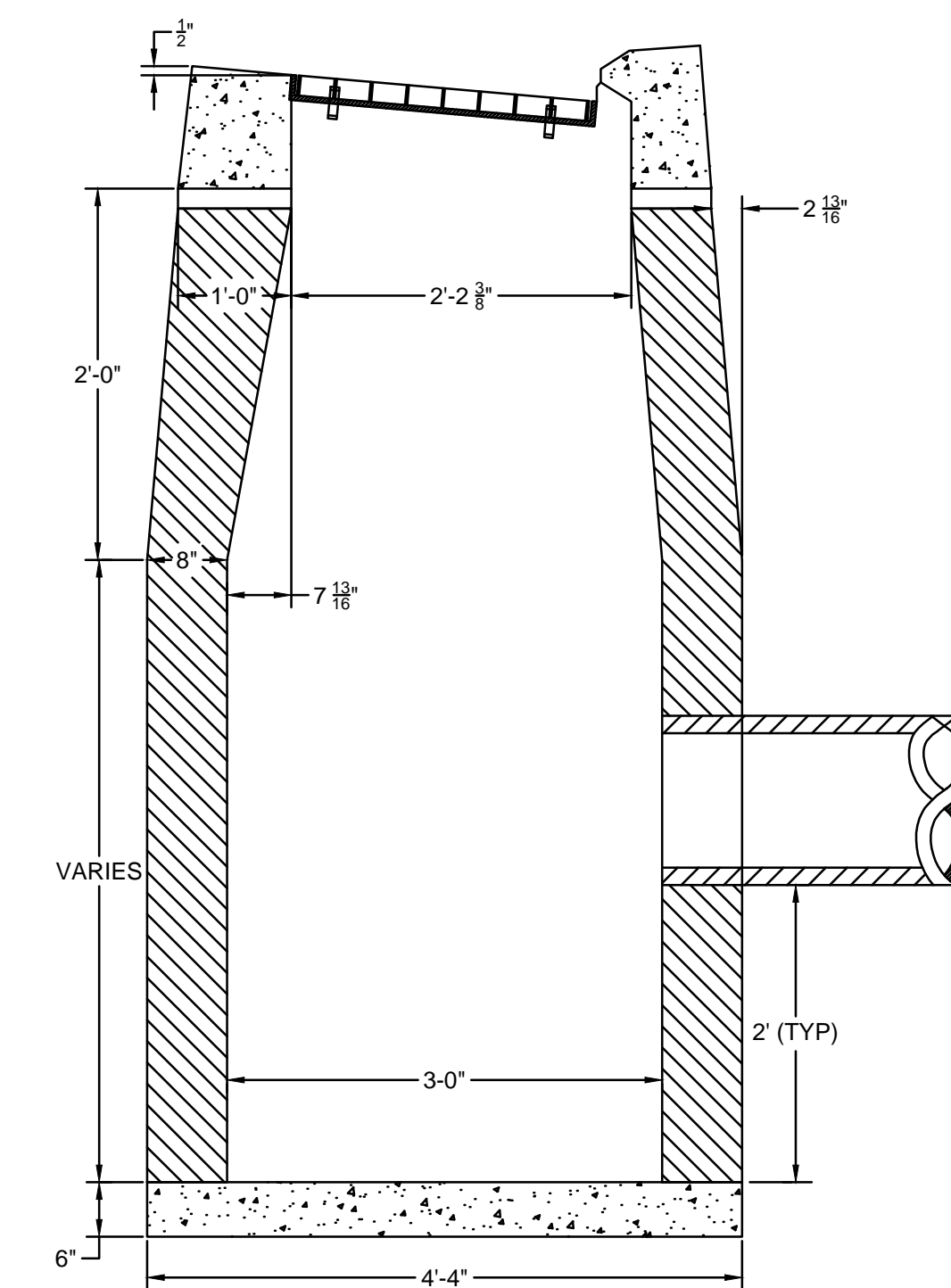


NOTE:
FOR USE ON ALL PIPE TRENCHES EXCEPT CROSSINGS

PERMANENT TRENCH REPAIR

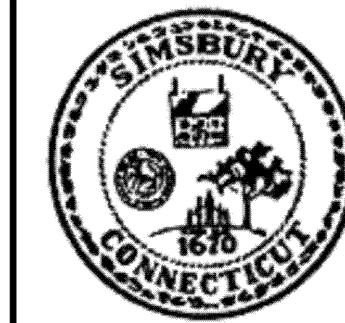


NOTE:
FOR USE ON ALL TRENCHES CROSSING ROAD



TYPE "C" CATCH BASIN

BY	JJC
DATE	7/17
REVISION	
NO	1
DPW COMMENTS	



TOWN OF SIMSBURY
DEPARTMENT OF PUBLIC WORKS
66 TOWN FOREST ROAD
SIMSBURY CONNECTICUT

NOD ROAD DRAINAGE IMPROVEMENTS
DETAILS

DRAWN BY:	JJC	CHECKED BY:	
DATE:	JULY 24, 2017	SCALE:	NONE