

Simsbury Water Pollution Control Presentation Musket Trail, Hawks Ln, Flintlock Ridge Sewer Extension



February 8, 2018

WPCA Overview

- Operate and maintain an advanced wastewater treatment plant: 3.8 MGD capacity, 5 pumping stations, 85 miles of sewer lines, and 2,300 manholes
- 4,500 residential accounts and non-residential accounts
- Service Area includes Simsbury and portions of Avon and Granby
- Avon and Granby are co-owners of the treatment facility and participate in debt reduction and O&M funding
- Provide administrative services, oversee sewer usage billing, conducts inspections and develop long term planning



Mission - Duties

- The Authority is responsible for establishing the policies concerning the installation of sanitary sewers and the operation of the Wastewater Treatment Plant
- We providing an efficient and environmentally responsible method for treating wastewater for all homes and buisnesses within our sewer service area
- WPCA is the sole decision making authority for sewer installations
- Finances are solely by supported by user fees:
 - Facility Connection Charges (FCC)
 - Sewer use fee



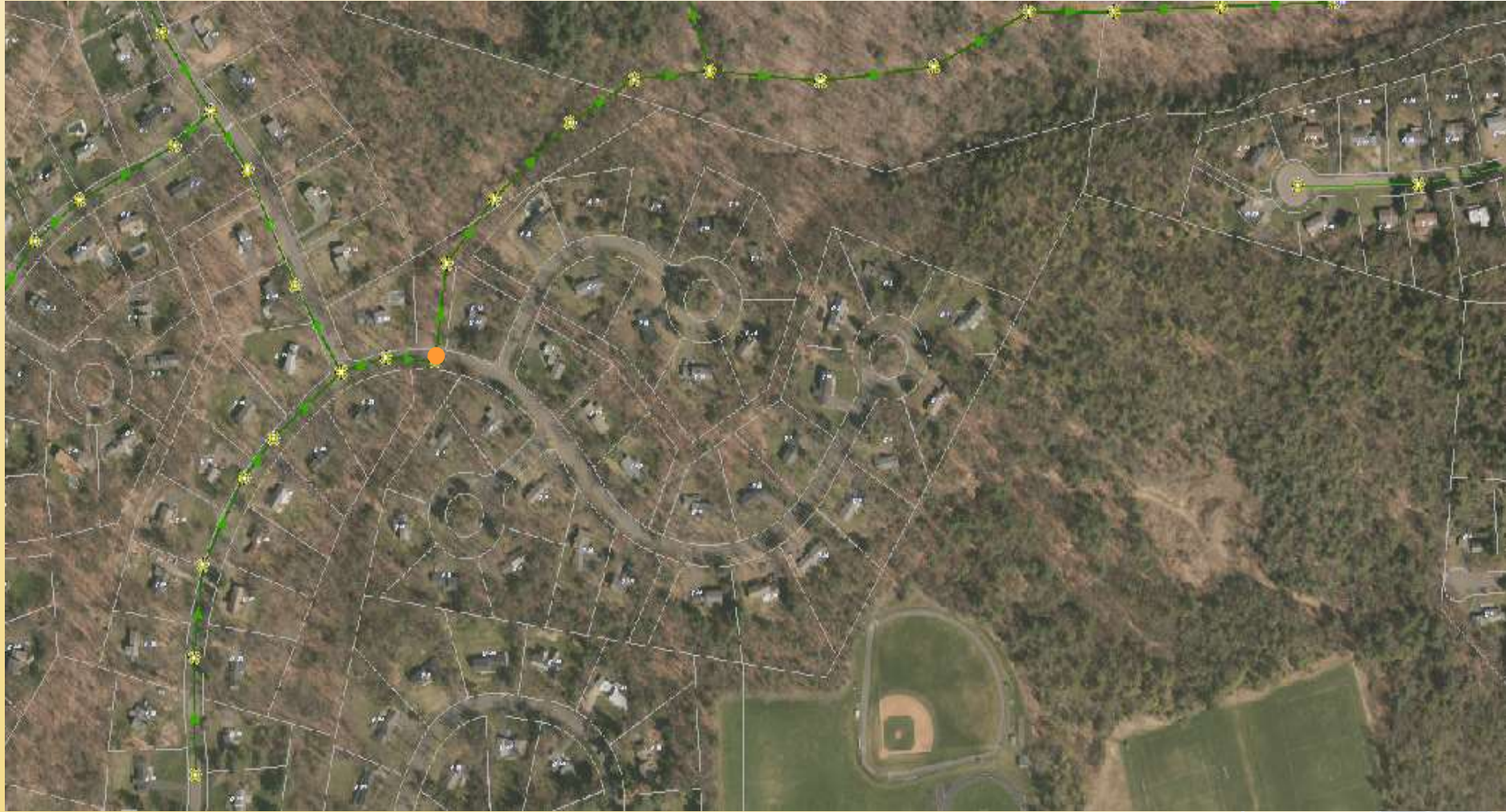
Funding for Sewer Extensions

- When an extension project is completed, the actual costs are divided evenly by the number of homes/lots served; this is the assessment
 - Funding for projects are managed through a revolving sewer assessment fund.
 - The fund is maintained by assessments, liens and refinancing commitments.



Project Location

SIMSBURY
CONNECTICUT



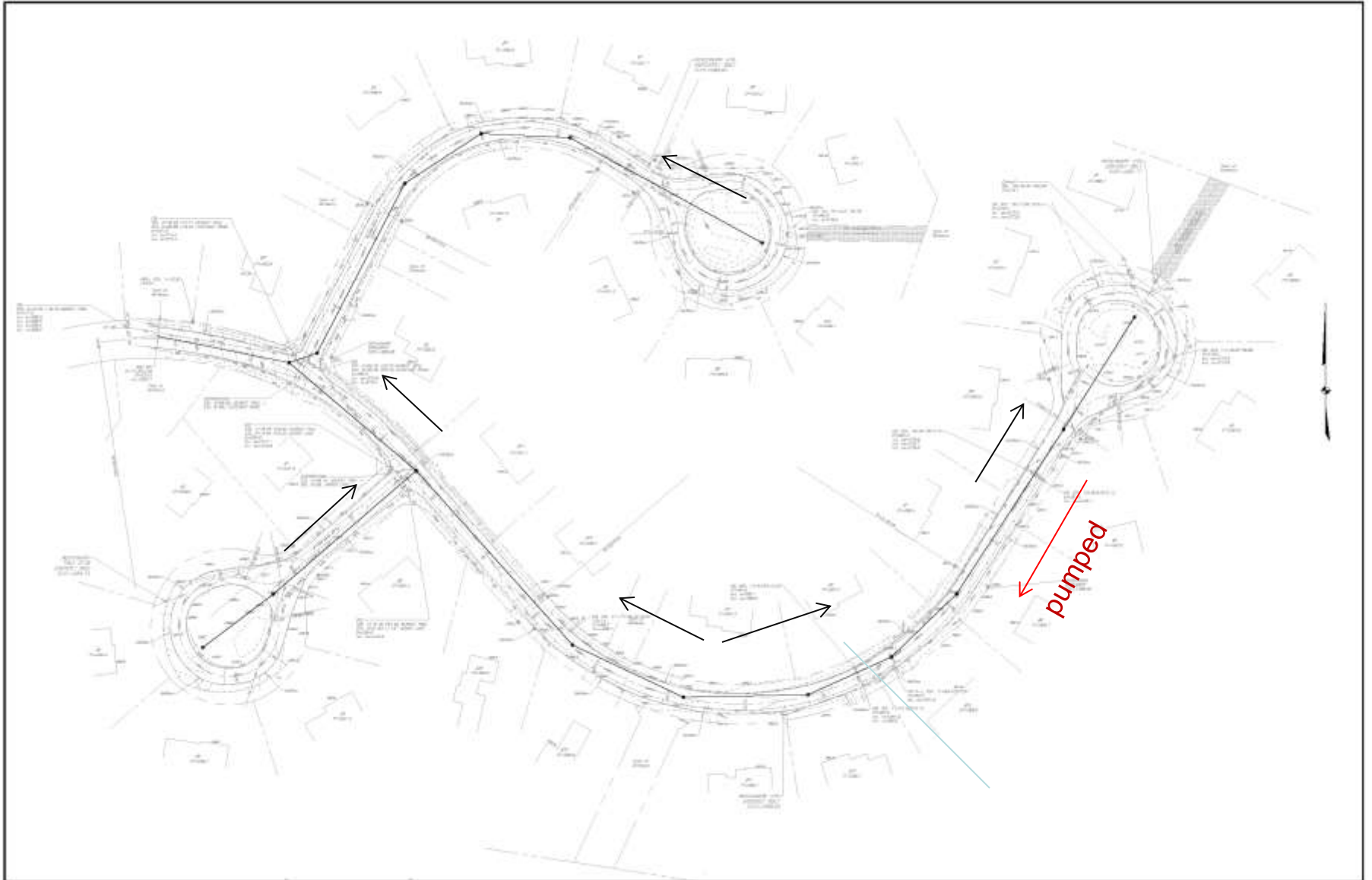
Project Specifics

- Nearby sewers were located on Musket Trail and within Town property north of Flintlock Ridge
- Multiple design layout and options were evaluated
- Due to the grades, pumping is required for portions of Musket Trail
 - Musket Trail rises nearly 15' and then drops another 10'



Project Layout

SIMSBURY
CONNECTICUT



Project Timing

- If approved by the WPCA this project would have an anticipated construction of summer 2019
- Road is potentially on schedule to be paved during 2021 – it may be able to expedite this repaving to support the project.



Project Cost Estimate

- Estimate is based on past projects and best available information. Field conditions and construction market may impact final cost
- Preliminary cost estimates include survey, design, main line construction including a Town owned pump station
- This cost is shared by the benefited properties; this is the assessment and is payable by all impacted lots regardless of connection to the system



Alternatives and Cost

➤ Gravity sewer*

- Estimated Project Cost \$729,000
- Assessment per home \$21,500

➤ Town Pump Station on Musket Trail:

- Estimated Project Cost \$638,600
- Assessment per home \$18,800

*not recommended due to excessive depth



Additional Costs

In addition to the assessment, each connection will require:

- \$4,095 Facility Connection Charge
- \$100 Permit Fee
- \$352 Annual user fee (currently rate)
- Cost to install the lateral from house to curb line:
 - Gravity lateral ~ \$50 to \$100 per foot



Financing

- If you choose, the assessment charge can be financed through the Town for a 10 year period at roughly 2% simple interest (currently). The rate is set by the Town Finance Director based on the current Town bond rate
- If you connect to the sewer immediately the FCC can be financed with the assessment



Your Cost

Assuming financing of FCC and Assessment

Financed:

Assessment	\$	18800.00	
FCC	\$	<u>4,095.00</u>	
Sub Total	\$	22,895.00	\$195/month

Installation Expense:

Permit	\$	100.00
Lateral	\$	<u>4,200.00</u>
	\$	4,300.00

Total \$ **27,895**

All Costs Presented are Estimates intended to provide a frame of reference. Actual costs will vary based on individual homes, depth of sewers and other factors.

Assessment cost may be further reduced if paving can be coordinated with the Towns Roadway paving program.



Septic System Replacement

Cost to Pump Out the Septic Tank:	\$150 to \$450
Cost of Septic System Testing with Dye:	\$75 to \$225
Cost to Remove Clog in Pipes to Tank:	\$50 to \$350 (or more, if it's serious)
Cost of Complete Visual Inspection:	\$300 to \$600
Cost to Replace Pipe from to Tank:	\$50 to \$100 per foot
Cost of Permit to Repair Septic System:	\$250
Cost of Permit to Install New System:	\$250
Engineering design costs	\$150 - \$250 per hour
Cost of Replacing Septic Tank Baffle:	\$200 to \$1000
Cost to Pressure Clean Distribution Pipes:	\$400 to \$1000
Cost of Replacing Distribution Box:	\$600 to \$1500
Cost of Installing New Septic Tank:	\$1,500 to \$4,500
Cost of Replacing Drain/Leach Field:	\$5,000 to \$10,000+

** These are typical costs associated with septic system repairs and installation intended to provide an order of magnitude to the potential costs. All costs vary depending on conditions.



Questions...

